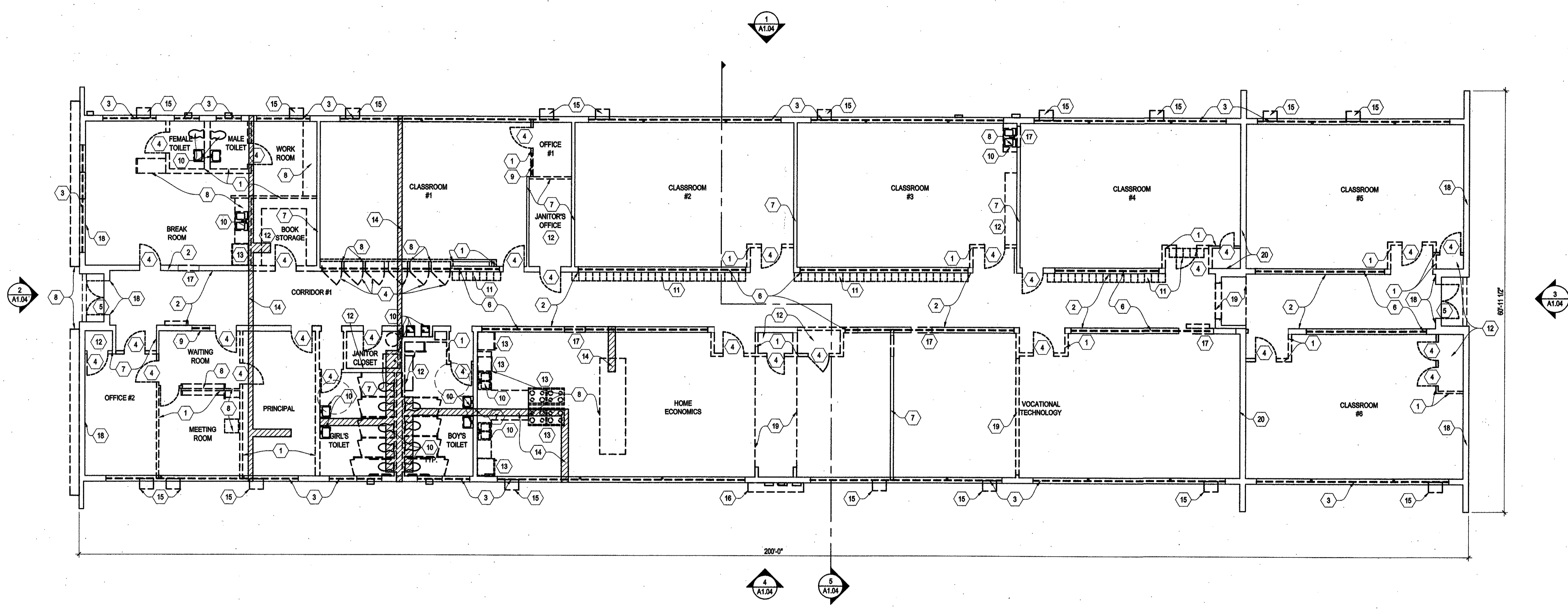


**RENOVATIONS AND ADDITION  
TO CLASSROOM BUILDINGS  
FOLSOM JR. HIGH SCHOOL  
ST. TAMMANY PARISH SCHOOL BOARD**  
FOLSOM, LOUISIANA  
88055 HAY HOLLOW ROAD



**1**  
**A1.00** 1/8" = 1'-0"  
**DEMOLITION PLAN - CLASSROOM BLDG. "A"**

**LEGEND:**  

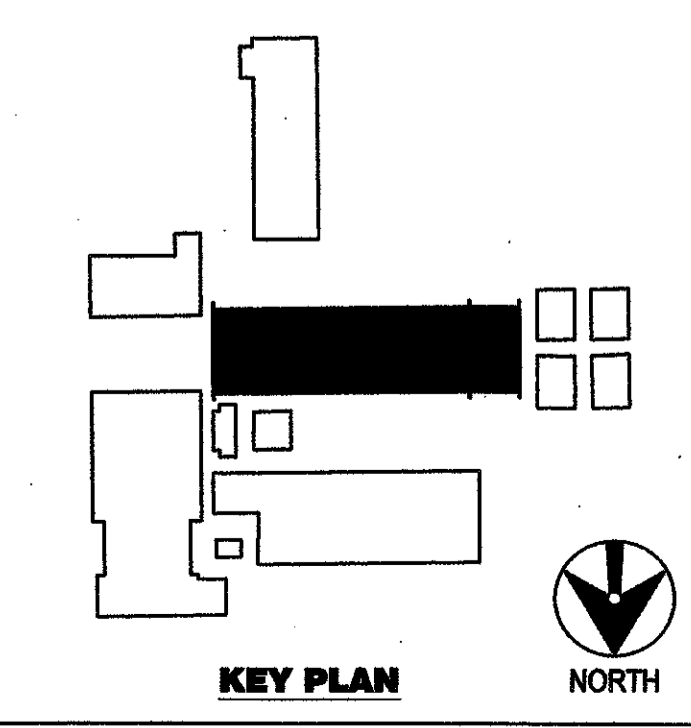
 --- EXISTING WD. STUDS TO REMAIN - REMOVE ALL GYP BD. & PLYWOOD FINISHES  
 = = = EXISTING TO BE DEMOLISHED

**GENERAL DEMOLITION NOTES:**

1. REMOVE ALL MISCELLANEOUS WALL ACCESSORIES, SHELVING, CABINETS, MARKER BOARDS, ETC.; OWNER TO HAVE FIRST RIGHT OF REFUSAL ON REMOVED ITEMS.
2. SEE MECHANICAL, ELECTRICAL AND STRUCTURAL DRAWINGS FOR RESPECTIVE TRADE DEMOLITION.
3. REMOVE ALL EXISTING CEILING TILE AT JOISTS, FURRING AND ROOF INSULATION AT EXISTING JOISTS ALONG WITH ALL FURRED DOWN PLYWOOD, GYP. BD. AND SUSP. LAY-IN CEILING SYSTEMS.
4. REMOVE ALL EXISTING FLOORING, NOT INCLUDED IN THE ABATEMENT CONTRACT, AND BASES ADEQUATE FOR INSTALLATION OF NEW FINISHES.
5. CLEAN ALL EXISTING EXTERIOR BRICK SURFACES AND REMOVE PAINT PER BRICK MANUFACTURER'S RECOMMENDATIONS, TUCK-POINT AS REQUIRED AND SEAL.
6. PREPARE EXISTING EXTERIOR WINDOW AND DOOR OPENINGS TO RECEIVE NEW WINDOWS, DOORS AND FRAMES.
7. INTERIOR WALLS INDICATED TO REMAIN ARE TO HAVE INTERIOR SHEATHING, FURRING STRIPS AND INSULATION REMOVED.
8. REMOVE ALL INSTRUCTIONAL AIDS FROM WALLS.
9. PROVIDE 1/8" LEVELING COMPOUND OVER EXISTING CONCRETE - SEE SPECIFICATIONS.

**SPECIFIC DEMOLITION NOTES:**

- |  |   |
|--|---|
| <ol style="list-style-type: none"> <li>1 REMOVE EXISTING WOOD STUD WALL SYSTEM ENTIRELY.</li> <li>2 REMOVE PLYWOOD ON BOTH SIDES OF WOOD STUD BEARING WALL.</li> <li>3 REMOVE EXTERIOR WINDOWS AND PREPARE FOR INSTALLATION OF NEW WINDOW SYSTEM.</li> <li>4 REMOVE EXISTING INTERIOR DOOR AND FRAME ENTIRELY.</li> <li>5 REMOVE EXTERIOR DOOR, FRAME, AND TRANSOM. PREPARE WALL EDGES TO RECEIVE NEW DOOR.</li> <li>6 REMOVE ALL HIGH WINDOWS IN CORRIDOR AND PREPARE FOR RATED INFILL.</li> <li>7 REMOVE EXISTING FINISHES ON BOTH SIDES OF WOOD STUD WALL ADEQUATE TO RECEIVE NEW FINISHES.</li> <li>8 REMOVE EXISTING BUILT-IN CASEWORK.</li> <li>9 REMOVE INTERIOR WINDOW.</li> <li>10 REMOVE EXISTING PLUMBING FIXTURE.</li> </ol> | <ol style="list-style-type: none"> <li>11 REMOVE EXISTING LOCKERS AND STORE FOR RE-INSTALLATION IN NEW CONFIGURATION.</li> <li>12 REMOVE EXISTING SHELVING.</li> <li>13 REMOVE EXISTING APPLIANCE AND RELATED ACCESSORIES.</li> <li>14 REMOVE PORTION OF CONCRETE SLAB ADEQUATE FOR INSTALLATION OF NEW UTILITIES - SEE MECH. AND ELECT. FOR ADDITIONAL INFORMATION.</li> <li>15 REMOVE EXISTING WINDOW HVAC UNIT AND ACCESSORIES.</li> <li>16 SEE ELECTRICAL DRAWINGS FOR RELATED DEMOLITION.</li> <li>17 REMOVE PORTION OF WD. STUD WALL ADEQUATE FOR INSTALLATION OF NEW DOOR.</li> <li>18 REMOVE PLYWOOD AT INTERIOR SIDE OF WOOD STUD BEARING WALL.</li> <li>19 REMOVE EXISTING PLYWOOD SOFFIT AND FRAMING UP TO PRIMARY STRUCTURE.</li> <li>20 REMOVE WD. FURRING &amp; PLYWOOD BOTH SIDES OF 1" DBL. W/TYPE BRICK WALL.</li> </ol> |
|--|---|



DATE ISSUED: 10 JUNE 2009  
 REVISED: \_\_\_\_\_  
 REVISED: \_\_\_\_\_  
 REVISED: \_\_\_\_\_  
 REVISED: \_\_\_\_\_  
 DRAWN BY: RAB  
 CHECKED BY: CEV  
 PHASE: \_\_\_\_\_  
 CONSTRUCTION DOCUMENTS  
**08060**  
 TITLE: **DEMOLITION PLAN CLASSROOM BLDG. "A"**  
 SHEET: **A1.00**