

**RENOVATIONS AND ADDITION
TO CLASSROOM BUILDINGS
FOLSOM JR. HIGH SCHOOL
ST. TAMMANY PARISH SCHOOL BOARD**

FOLSOM, LOUISIANA
88055 HAY HOLLOW ROAD

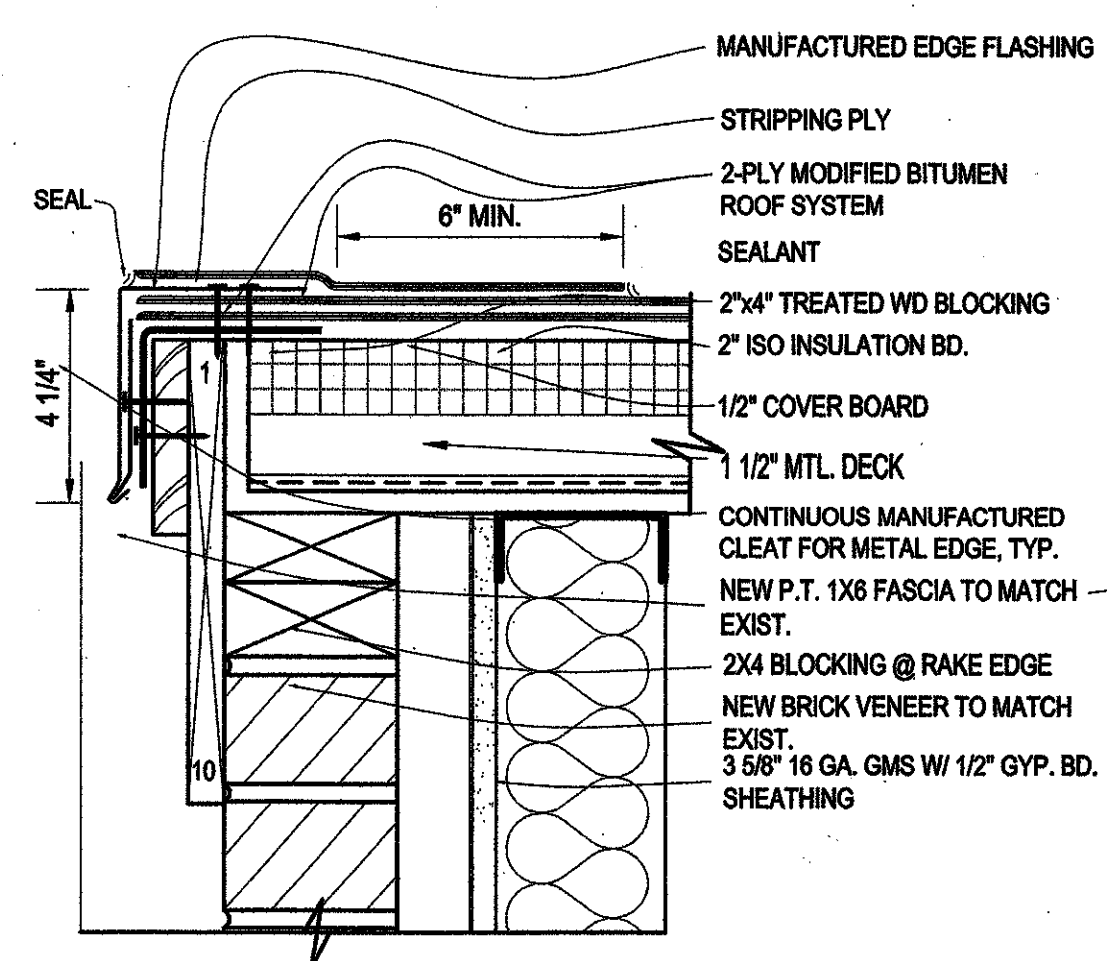
DATE ISSUED: 10 JUNE 2009
REVISED:
REVISED:
REVISED:
REVISED:
DRAWN BY: RAB
CHECKED BY: CEV
PHASE:

**CONSTRUCTION
DOCUMENTS**

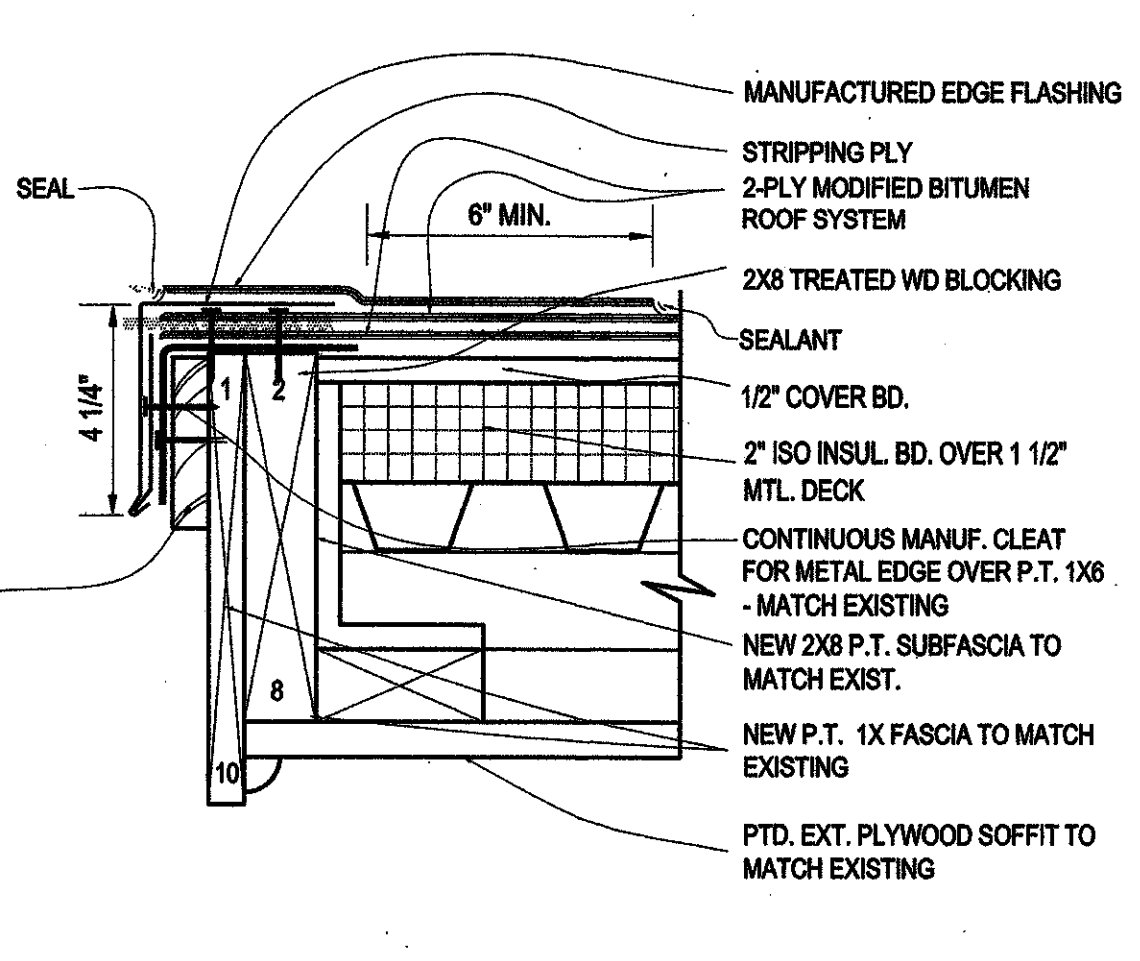
08060

TITLE:
**ROOF PLAN & DETAILS
CLASSROOM "B"**

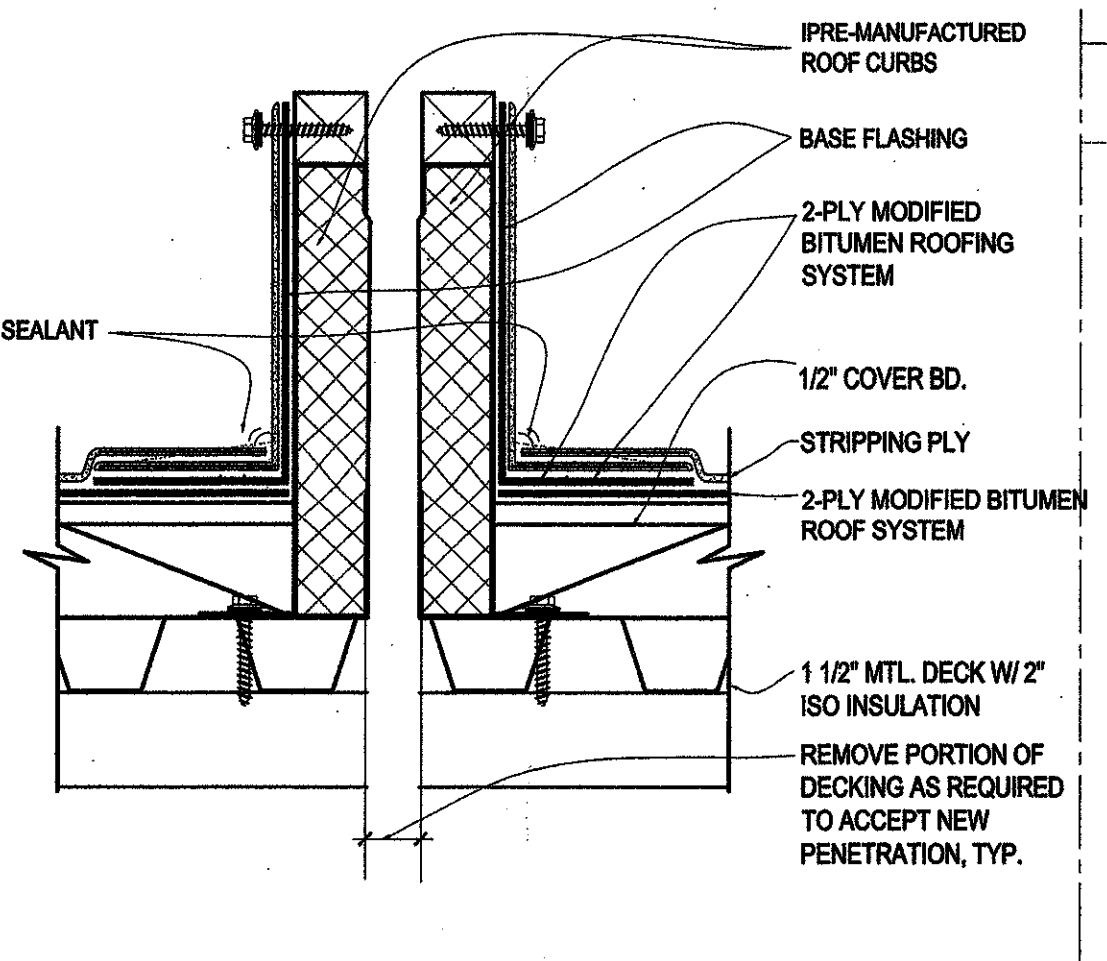
SHEET:
A2.02



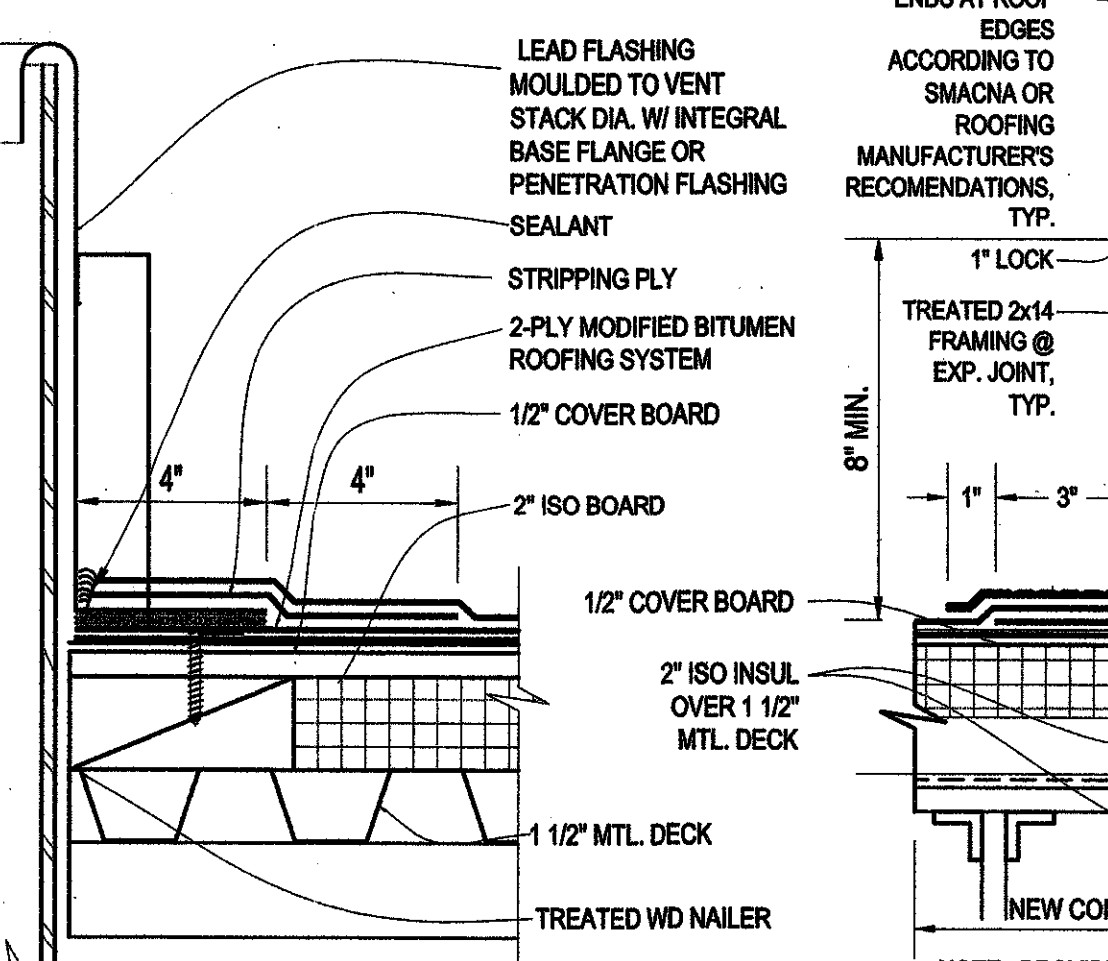
2 ROOF DETAIL
A2.02 3" = 1'-0"



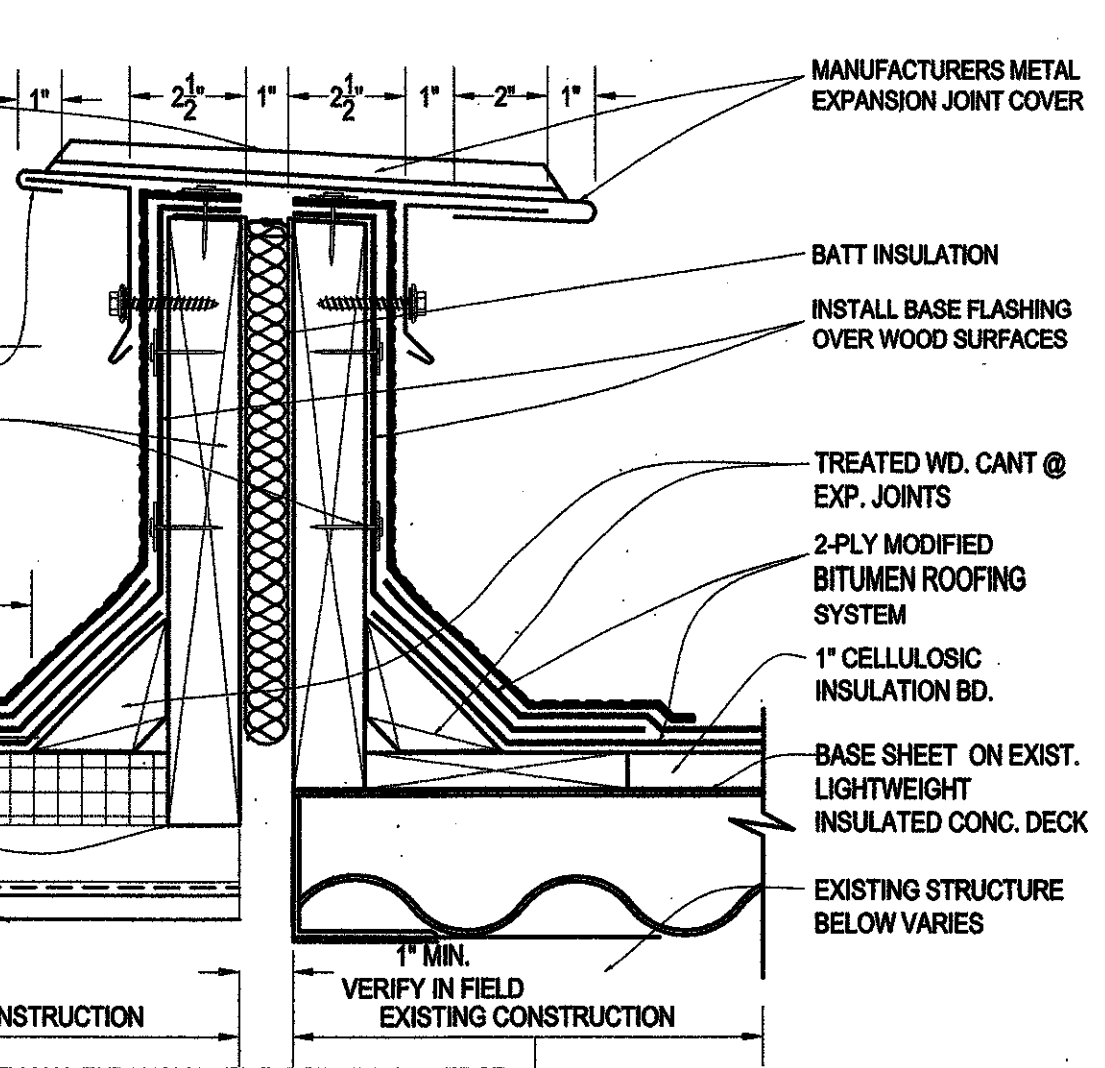
3 ROOF DETAIL
A2.02 3" = 1'-0"



4 ROOF DETAIL
A2.02 3" = 1'-0"

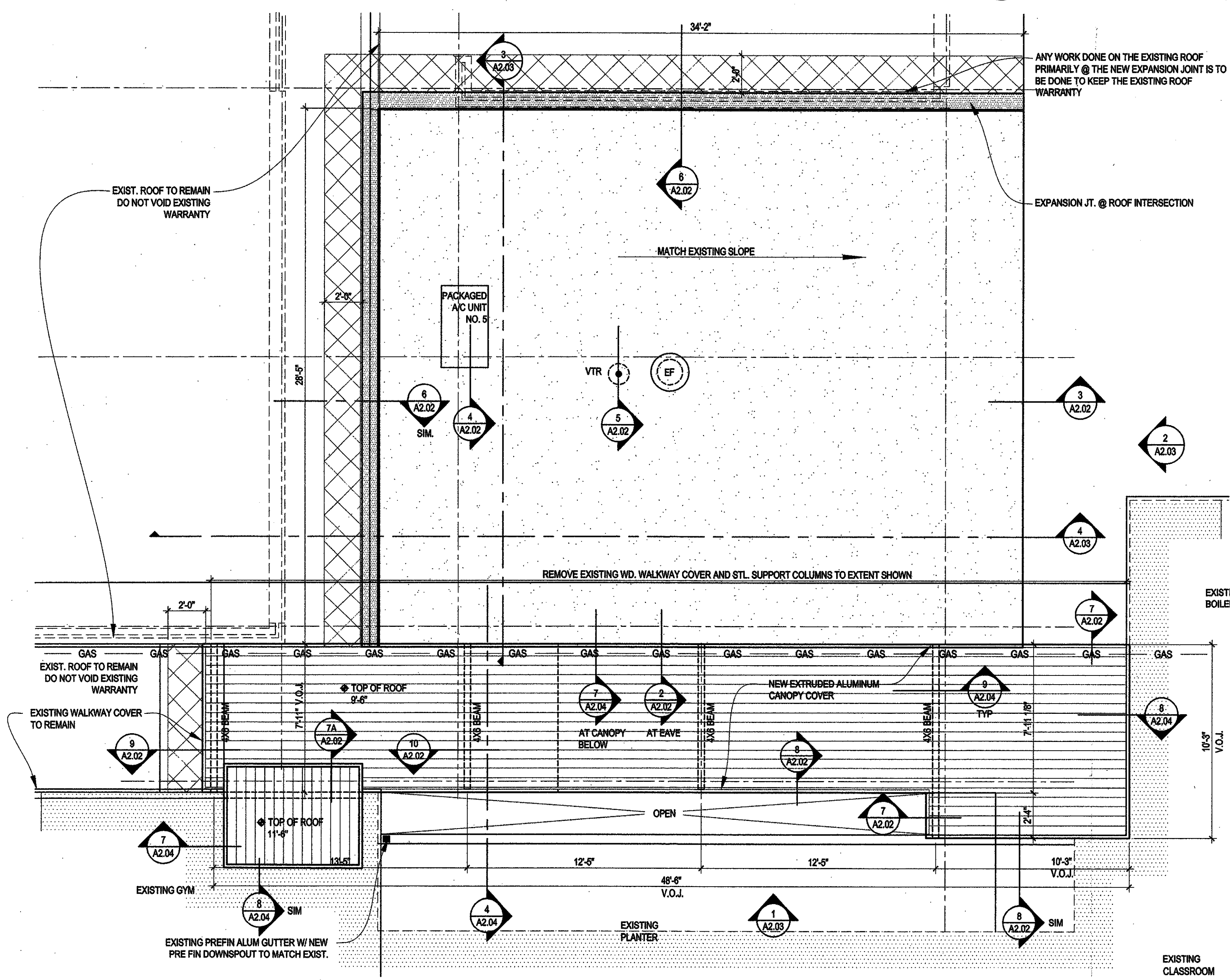


5 ROOF DETAIL
A2.02 3" = 1'-0"

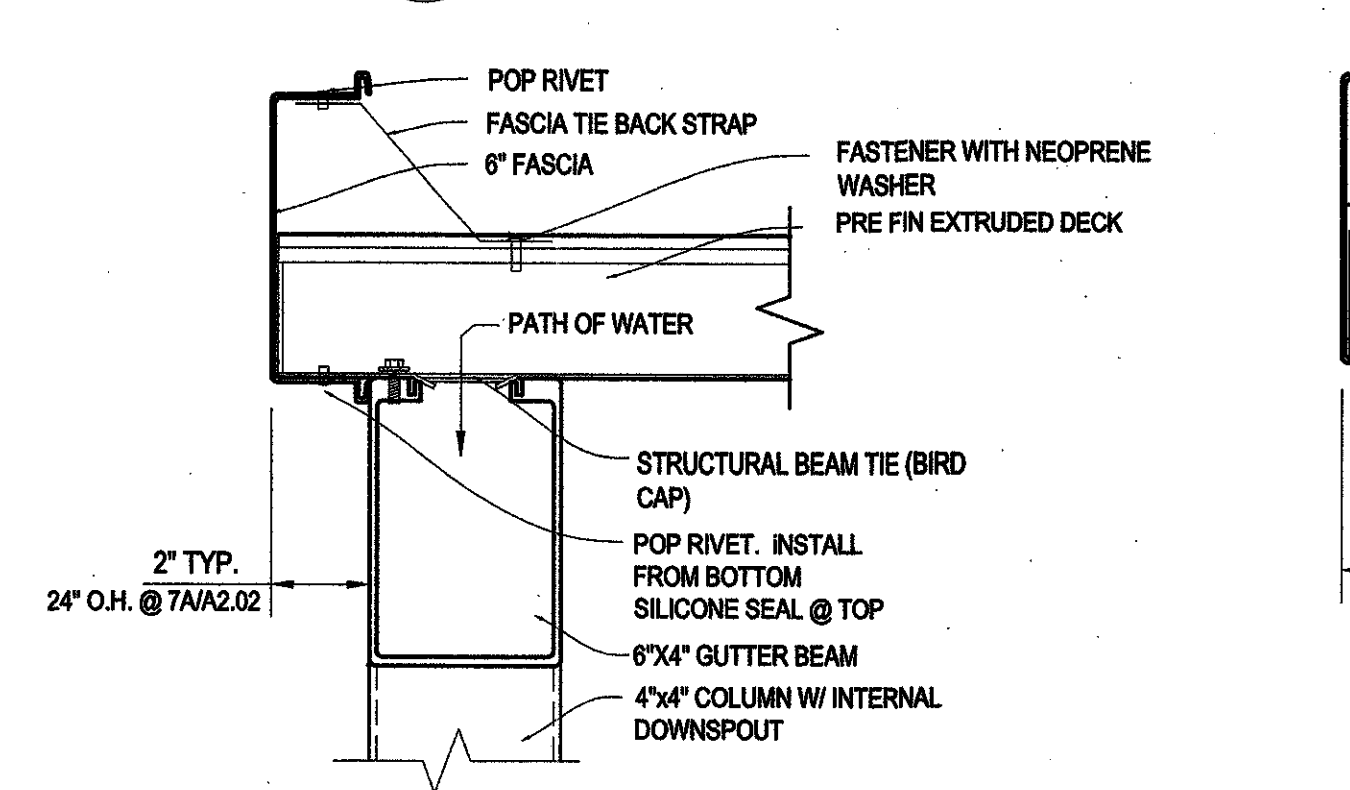


6 ROOF DETAIL
A2.02 3" = 1'-0"

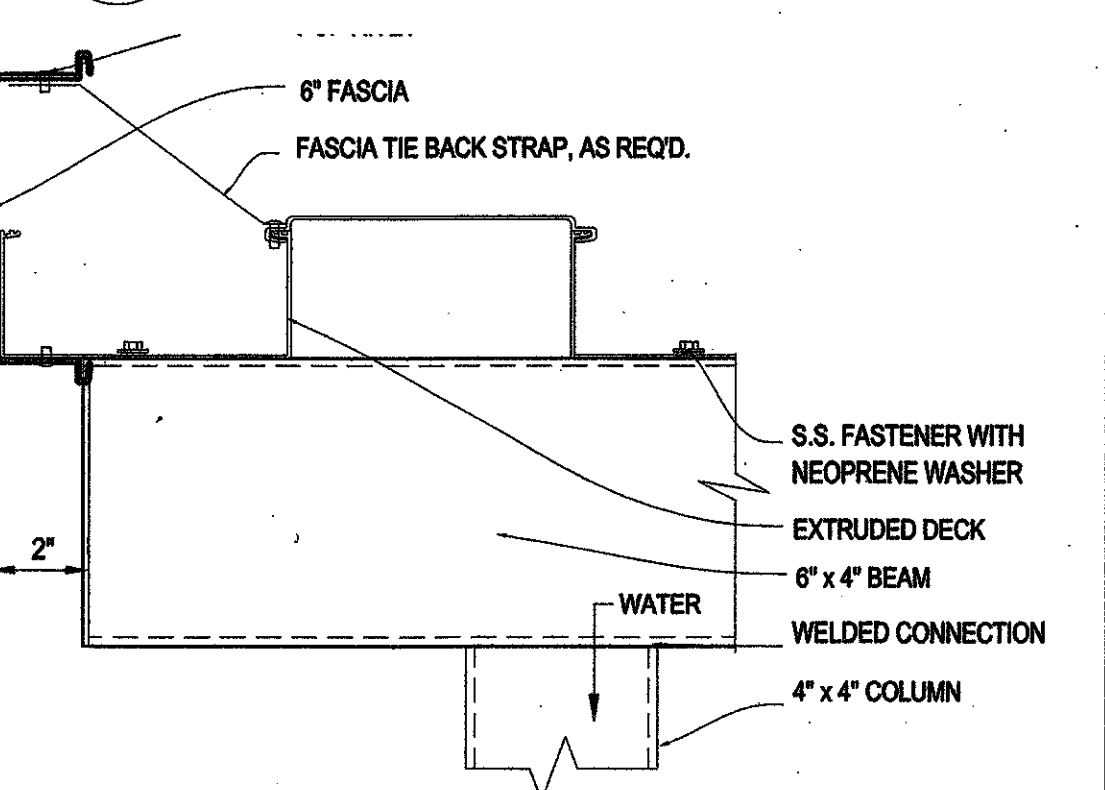
REMOVE EXISTING ROOF SYSTEM TO TOP OF LIGHTWEIGHT INSUL. CONC. DECK FROM EXPANSION JOINT ONTO EXISTING ROOF FOR A MINIMUM OF 2'-0"



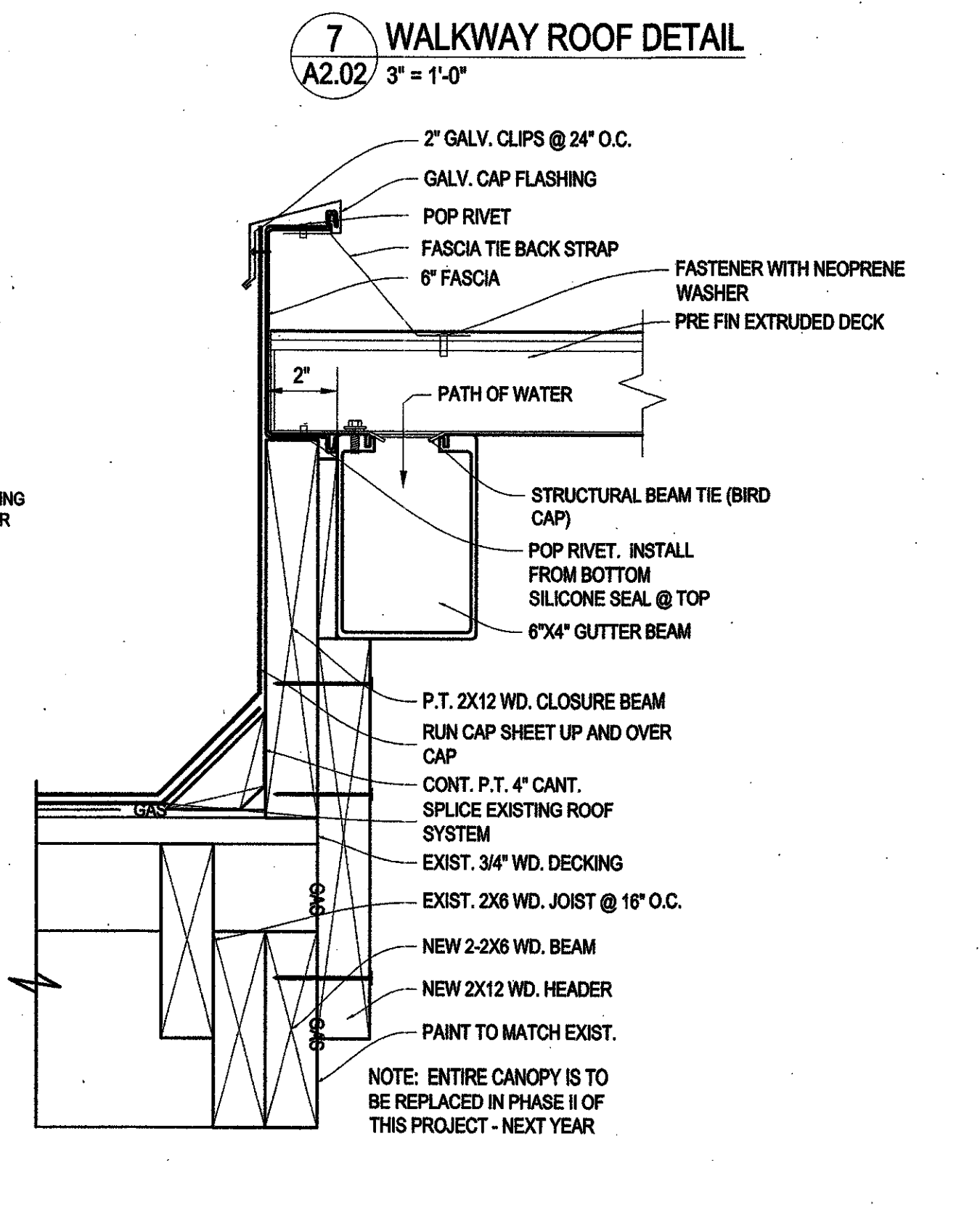
1 PARTIAL ROOF PLAN - CLASSROOM WING "B"
A2.02 1/4" = 1'-0"



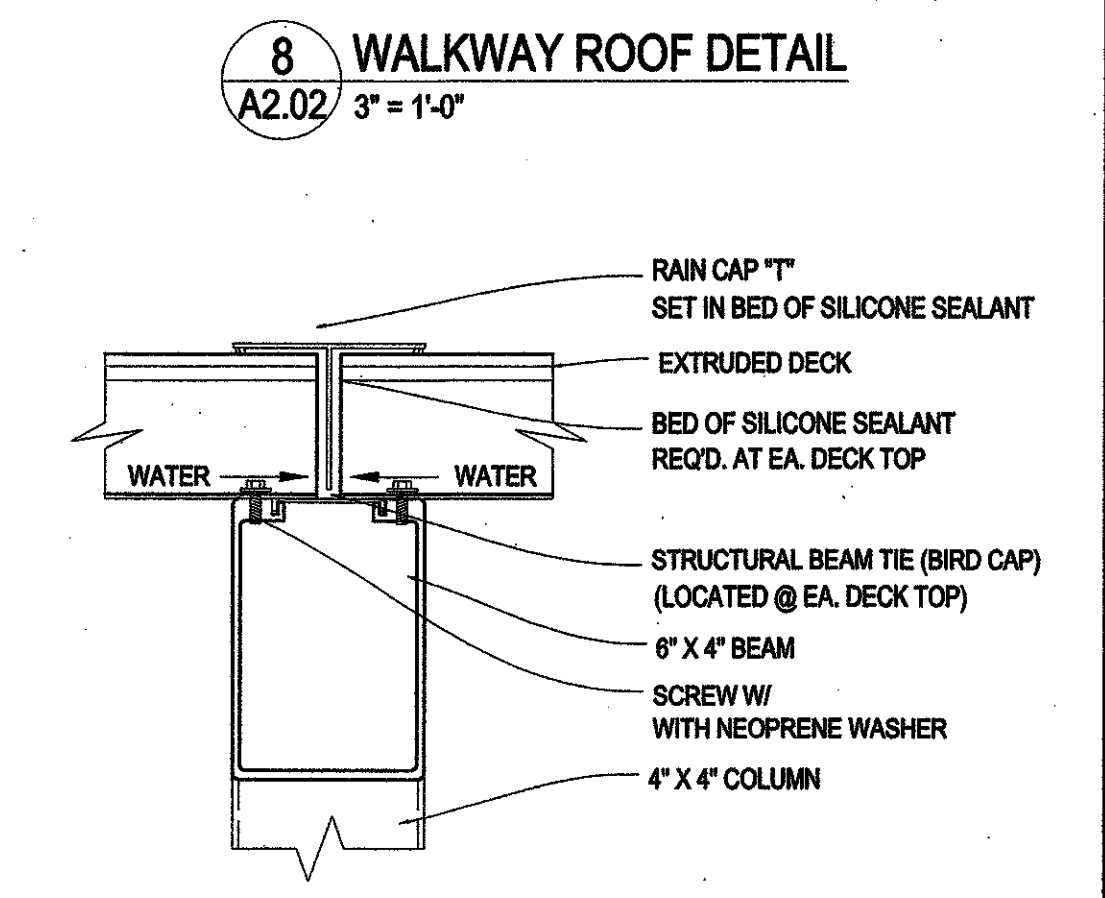
7 WALKWAY ROOF DETAIL
A2.02 3" = 1'-0"



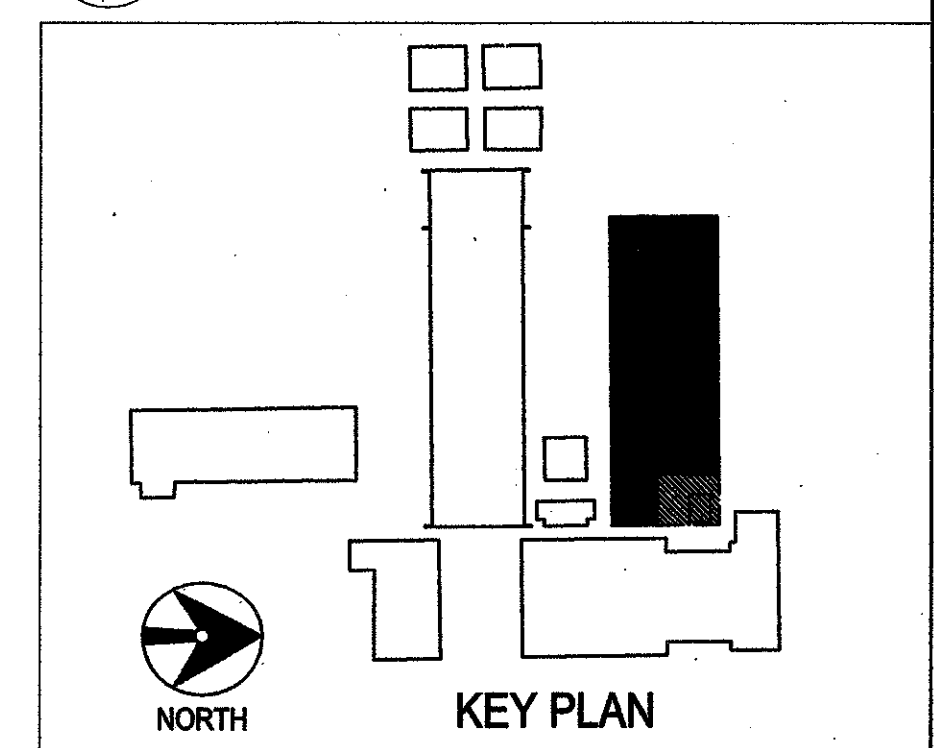
8 WALKWAY ROOF DETAIL
A2.02 3" = 1'-0"



9 WALKWAY ROOF DETAIL
A2.02 3" = 1'-0"



10 WALKWAY ROOF DETAIL
A2.02 3" = 1'-0"



KEY PLAN