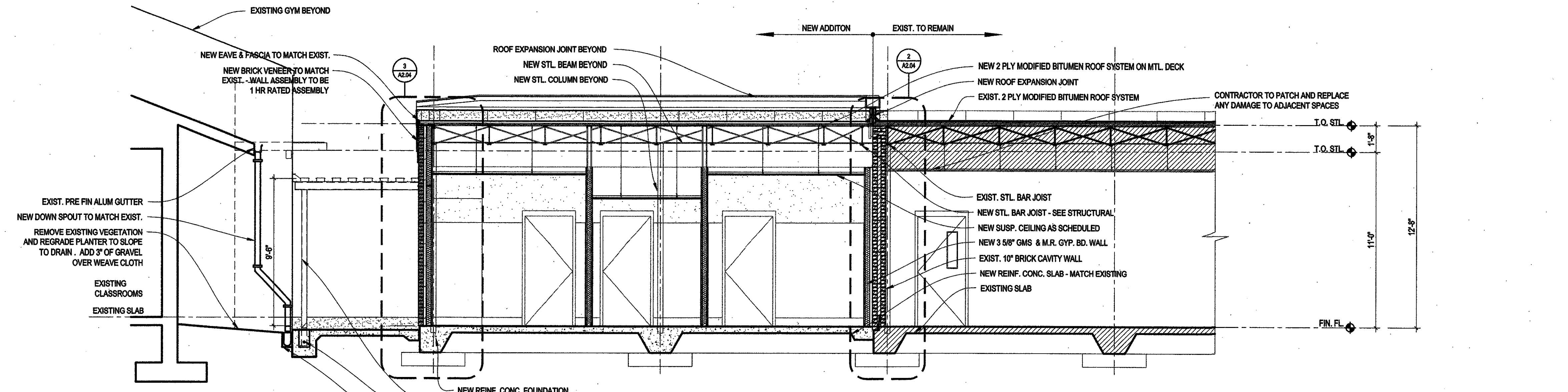
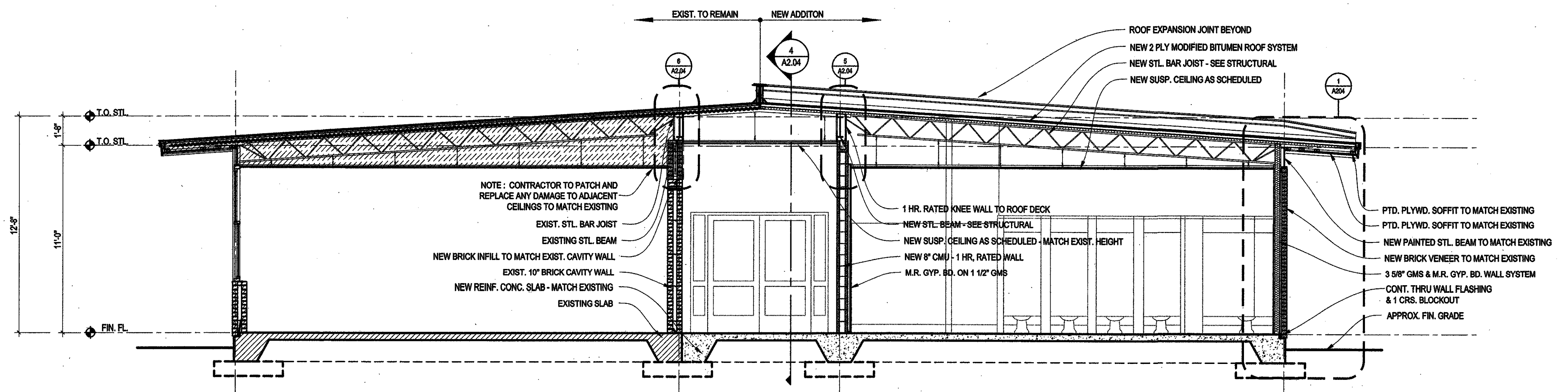


1 ELEVATION - CLASSROOM BLDG. "B"
A2.03 1/8" = 1'-0"

2 PARTIAL ELEVATION - CLASSROOM BLDG. "B"
A2.03 1/8" = 1'-0"



3 PARTIAL BUILDING SECTION - CLASSROOM BLDG. "B"
A2.03 1/4" = 1'-0"



4 BUILDING SECTION - CLASSROOM BLDG. "B"
A2.03 1/4" = 1'-0"

VergesRome
Architects

320 N. Carrollton Avenue, Suite 100
New Orleans, Louisiana 70119
t. 504.488.7739 f. 504.488.7743
www.VergesRome.com
© copyright 2009

**RENOVATIONS AND ADDITION
TO CLASSROOM BUILDINGS
FOLSOM JR. HIGH SCHOOL
ST. TAMMANY PARISH SCHOOL BOARD**

FOLSOM, LOUISIANA
83055 HAY HOLLOW ROAD

DATE ISSUED: 10 JUNE 2009
REVISED:
REVISED:
REVISED:
REVISED:
DRAWN BY: RAB
CHECKED BY: CEV
PHASE: CONSTRUCTION DOCUMENTS

08060

TITLE:
ELEV. & SECTIONS
CLASSROOM BLDG. "B"

SHEET:
A2.03