

**RENOVATIONS AND ADDITION
TO CLASSROOM BUILDINGS
FOLSOM JR. HIGH SCHOOL
ST. TAMMANY PARISH SCHOOL BOARD**
FOLSOM, LOUISIANA
83055 HAY HOLLOW ROAD

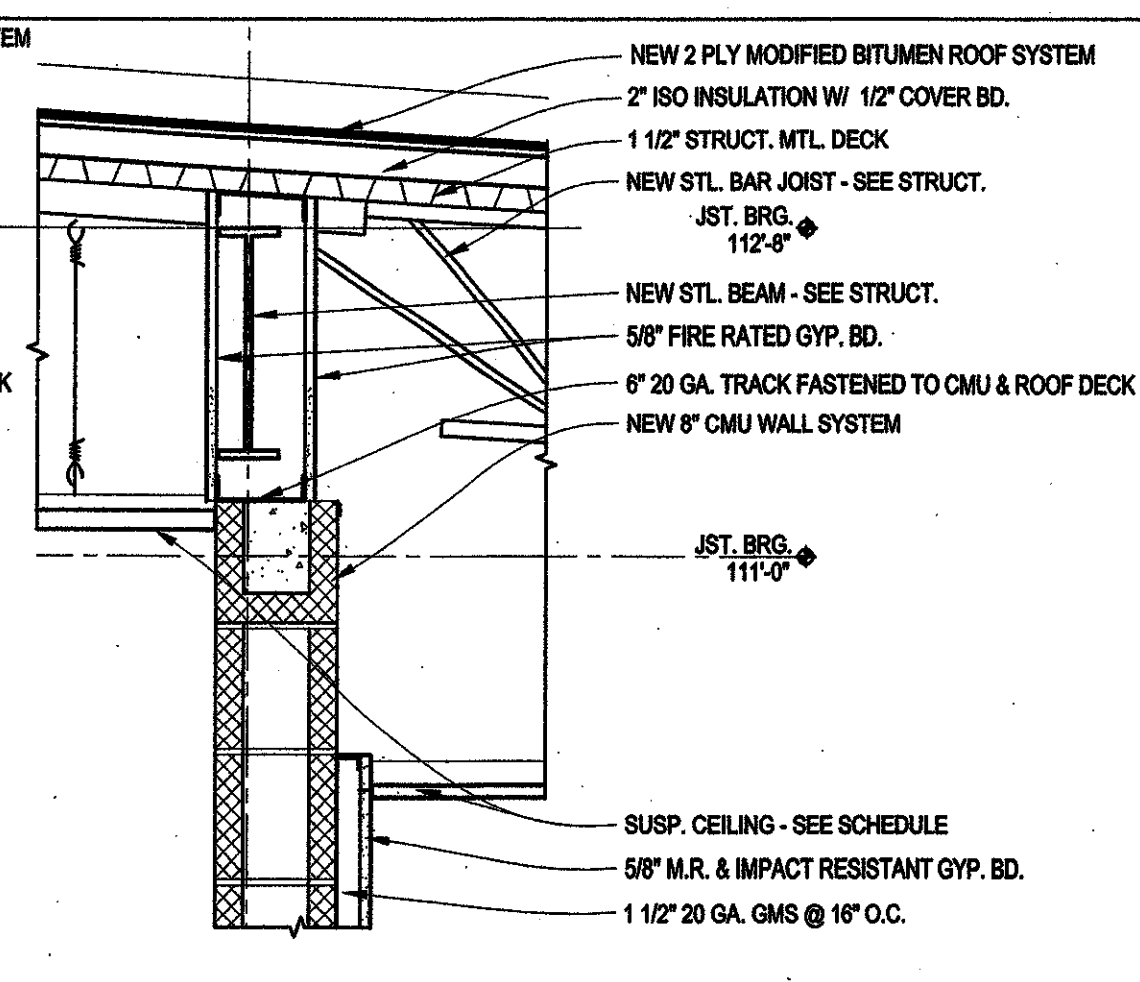
DATE ISSUED: 10 JUNE 2009
REVISED:
REVISED:
REVISED:
REVISED:
DRAWN BY: RAB
CHECKED BY: CEV
PHASE:
CONSTRUCTION DOCUMENTS

08060

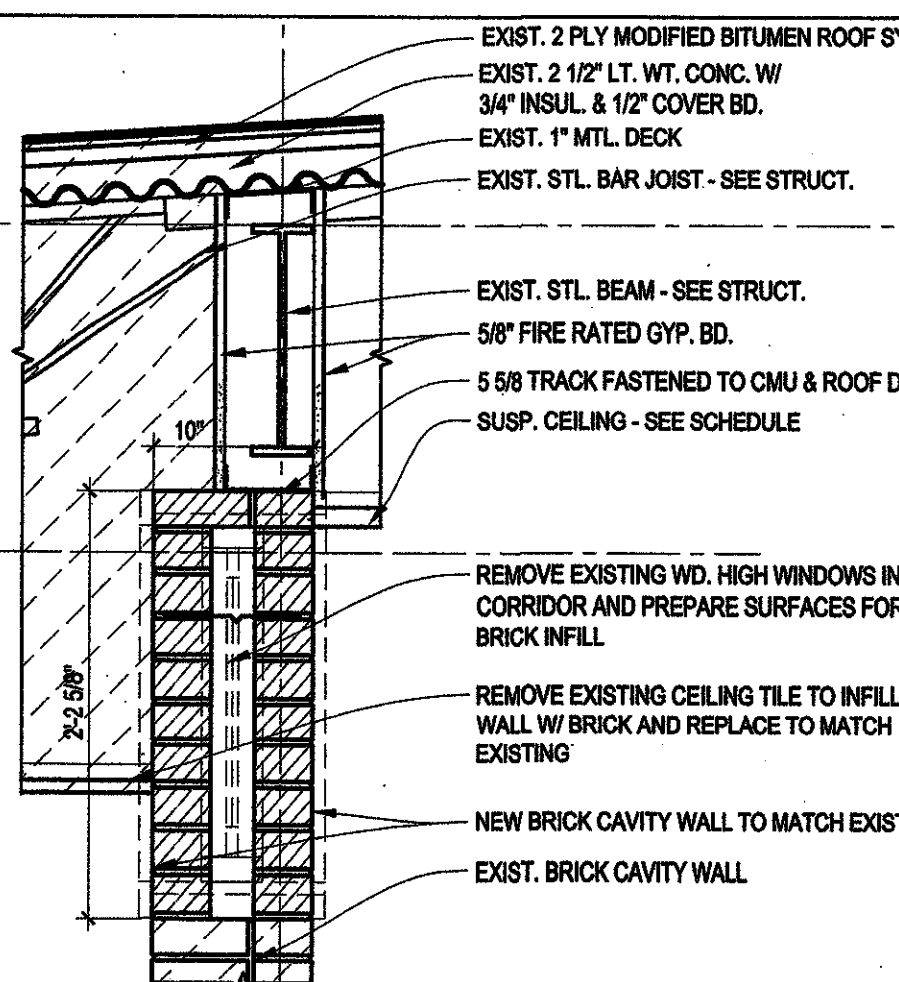
TITLE:
**WALL SECTIONS
CLASSROOM BLDG. "B"**

SHEET:

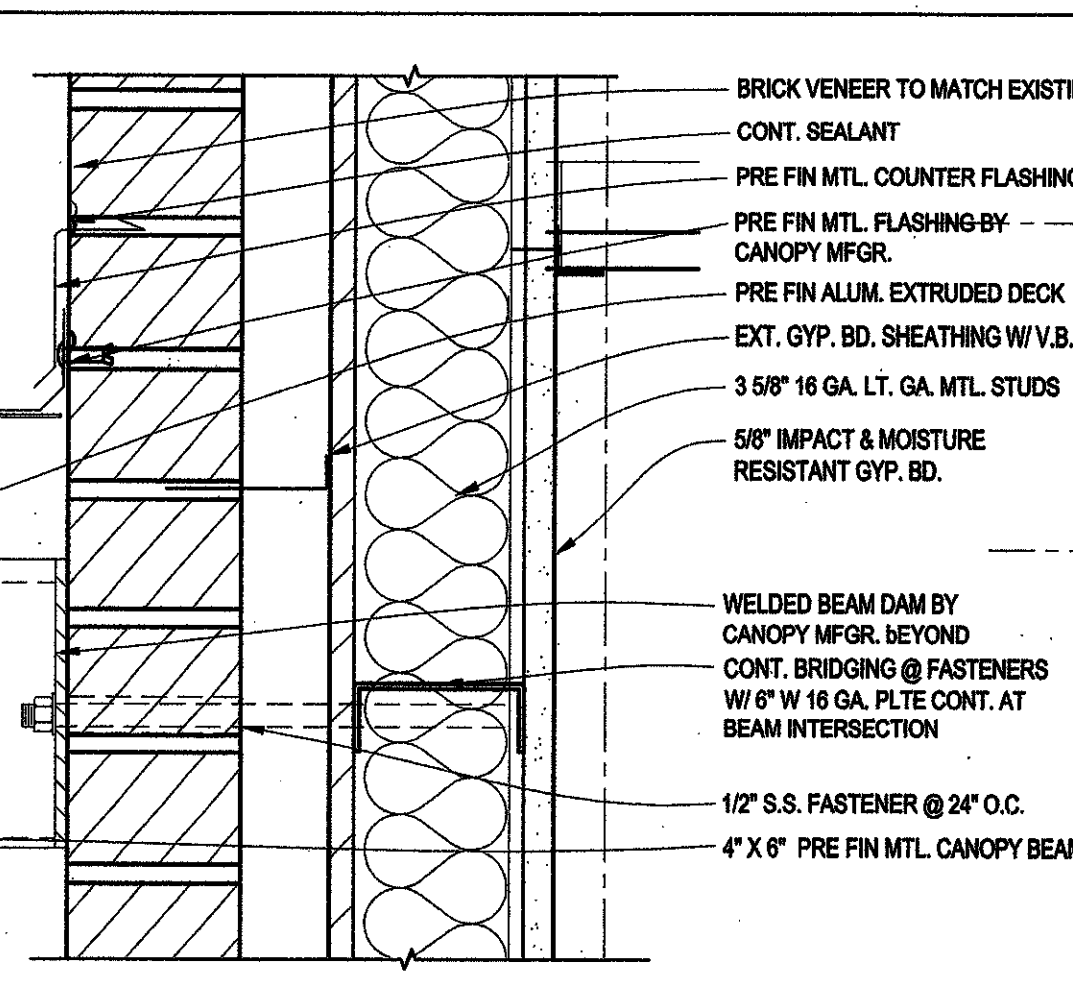
A2.04



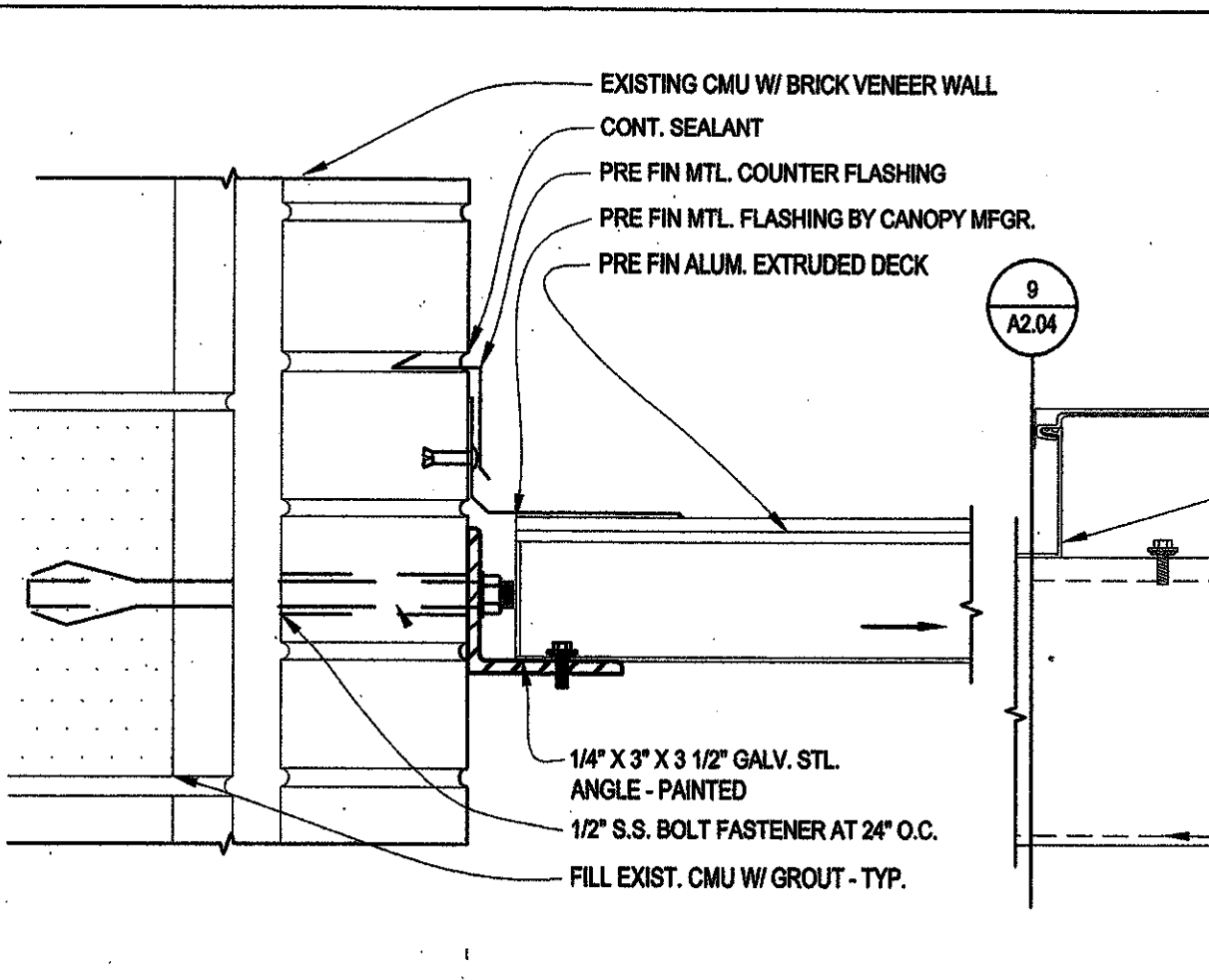
5 DETAIL
A2.04 1" = 1'-0"



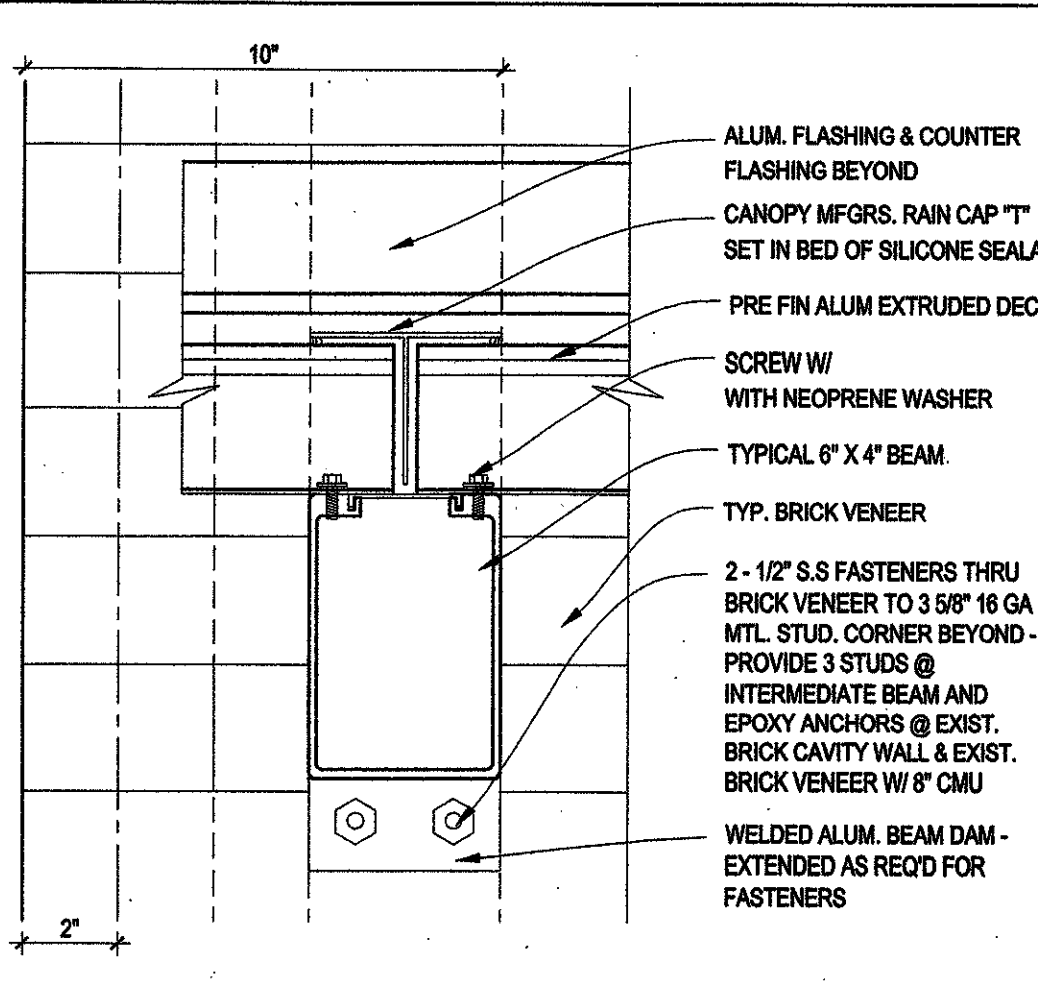
6 DETAIL
A2.04 1" = 1'-0"



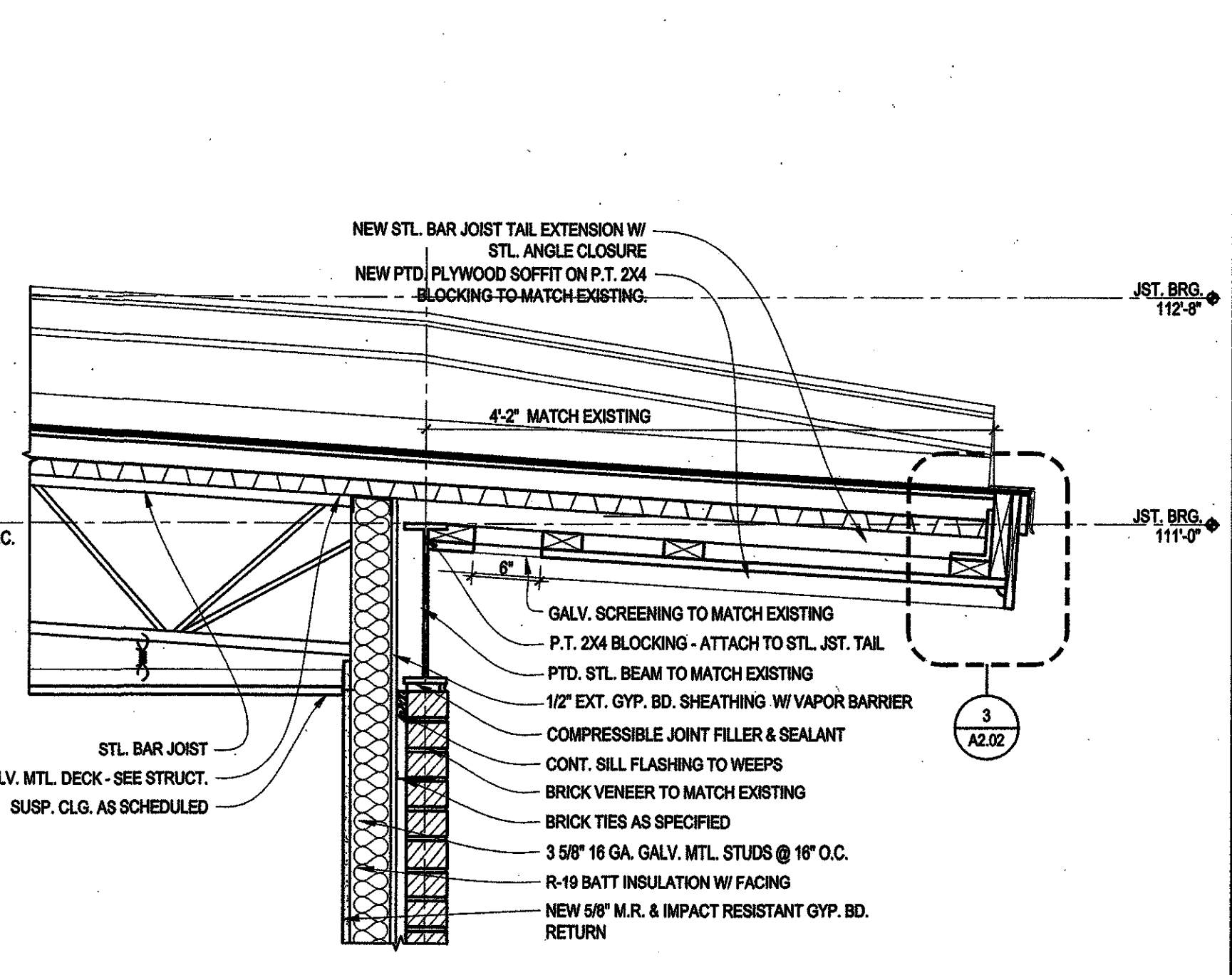
7 DETAIL
A2.04 3" = 1'-0"



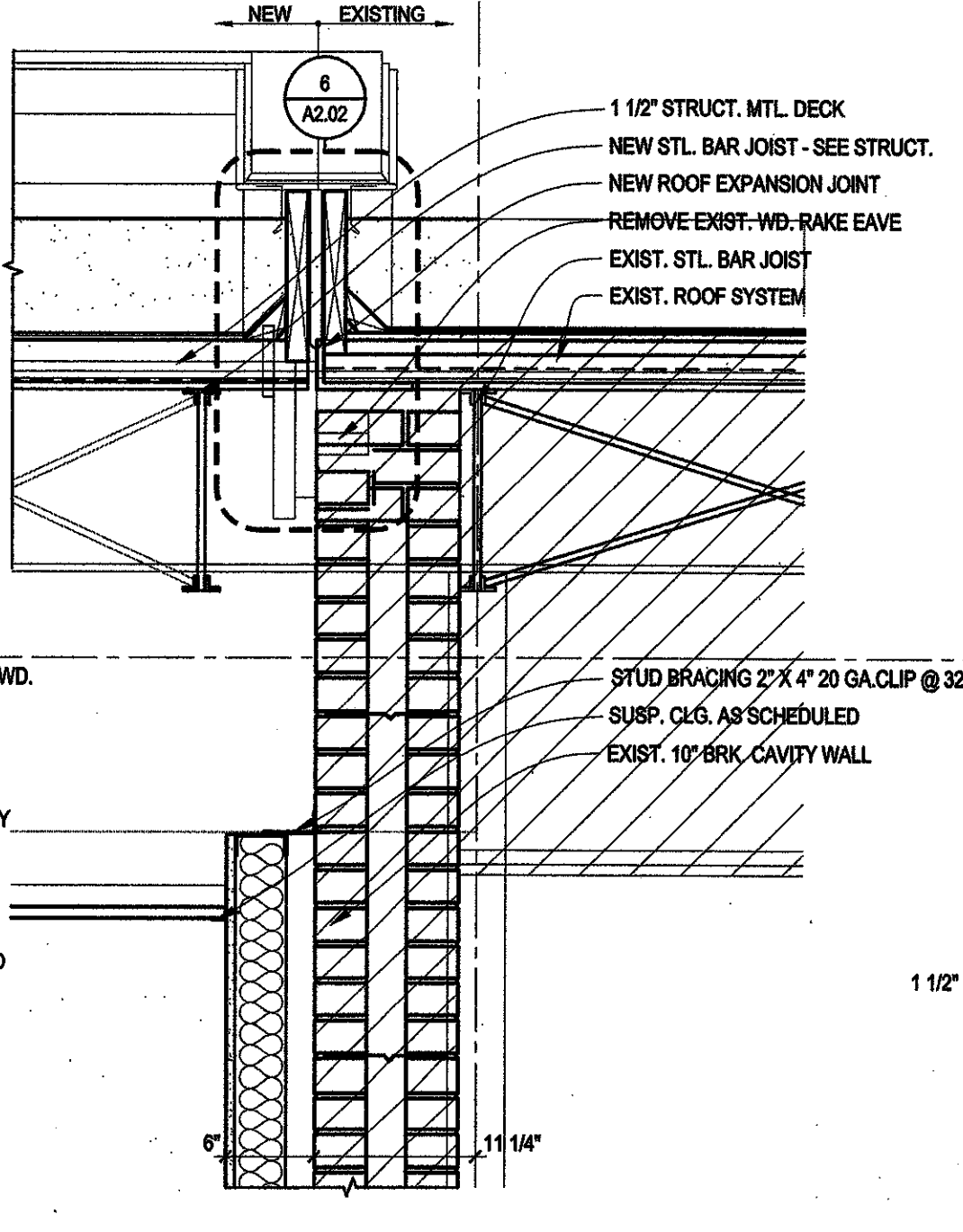
8 DETAIL
A2.04 3" = 1'-0"



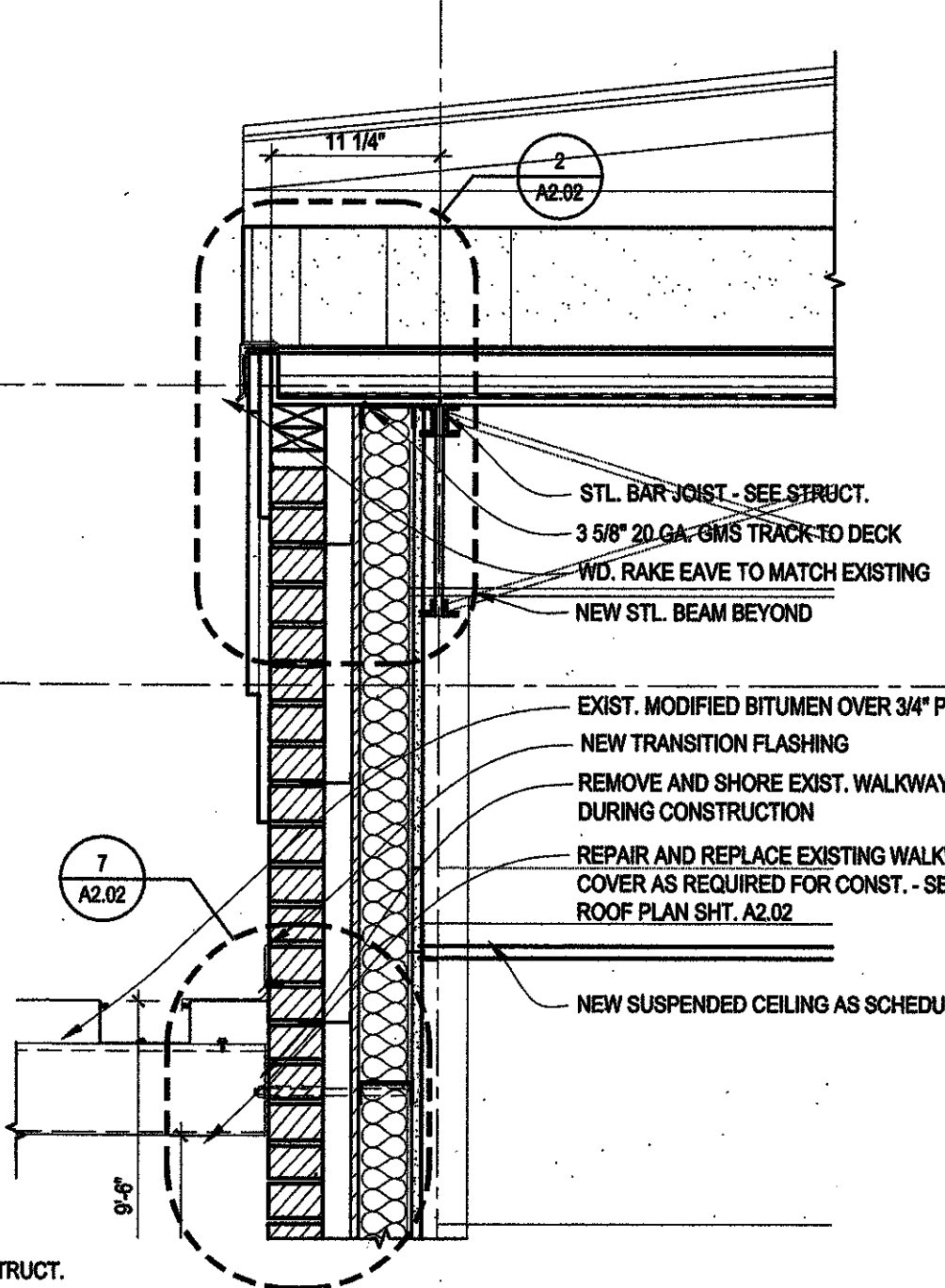
9 DETAIL
A2.04 3" = 1'-0"



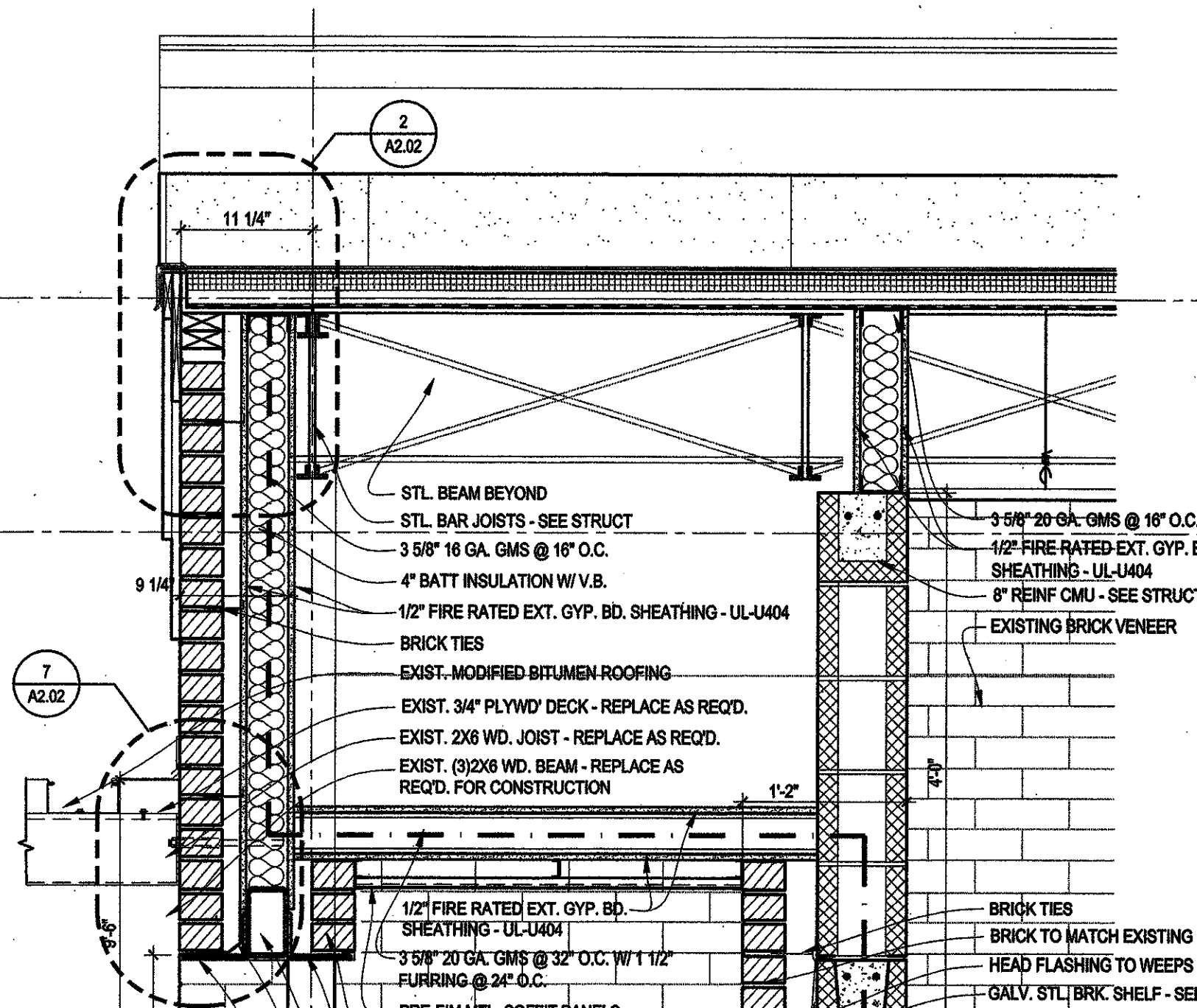
1 WALL SECTION
A2.04 1" = 1'-0"



2 WALL SECTION
A2.04 1" = 1'-0"



3 WALL SECTION
A2.04 1" = 1'-0"



4 WALL SECTION
A2.04 1" = 1'-0"

