

**RENOVATIONS AND ADDITION  
TO CLASSROOM BUILDINGS  
FOLSOM JR. HIGH SCHOOL  
ST. TAMMANY PARISH SCHOOL BOARD**

FOLSOM, LOUISIANA

83055 HAY HOLLOW ROAD

DATE ISSUED:	10 JUNE 2009
REVISED:	22 JANUARY 2008
REVISED:	
REVISED:	
REVISED:	
DRAWN BY:	JAB
CHECKED BY:	CEV
PHASE:	

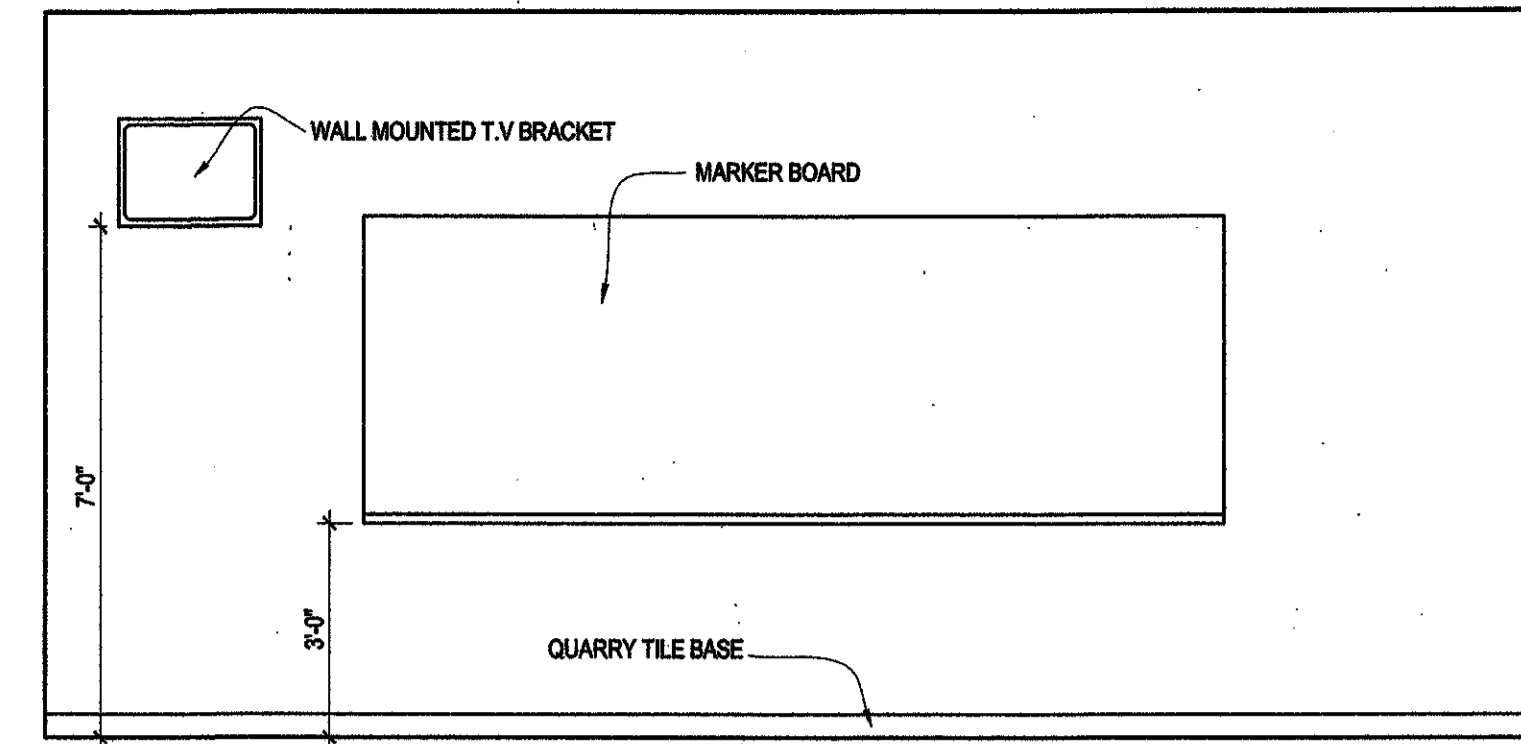
**CONSTRUCTION  
DOCUMENTS**

**08060**

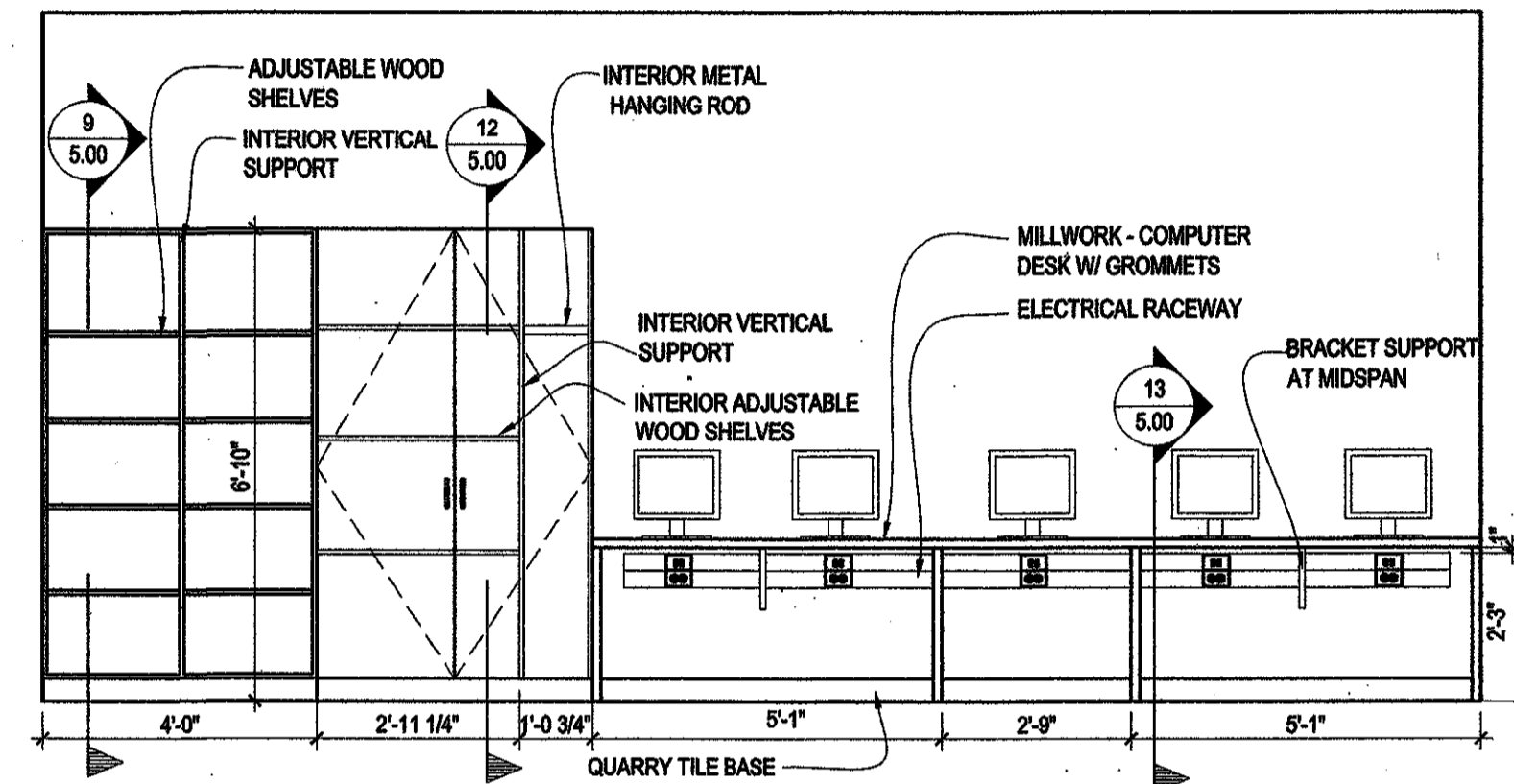
TITLE:  
**INTERIOR  
ELEVATIONS**

SHEET:

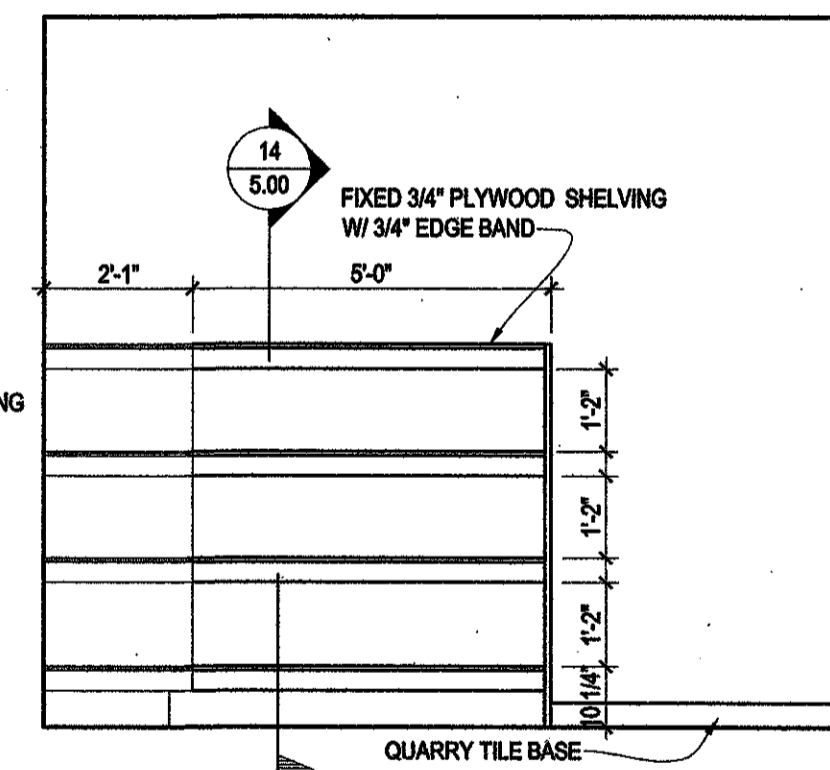
**A4.02**



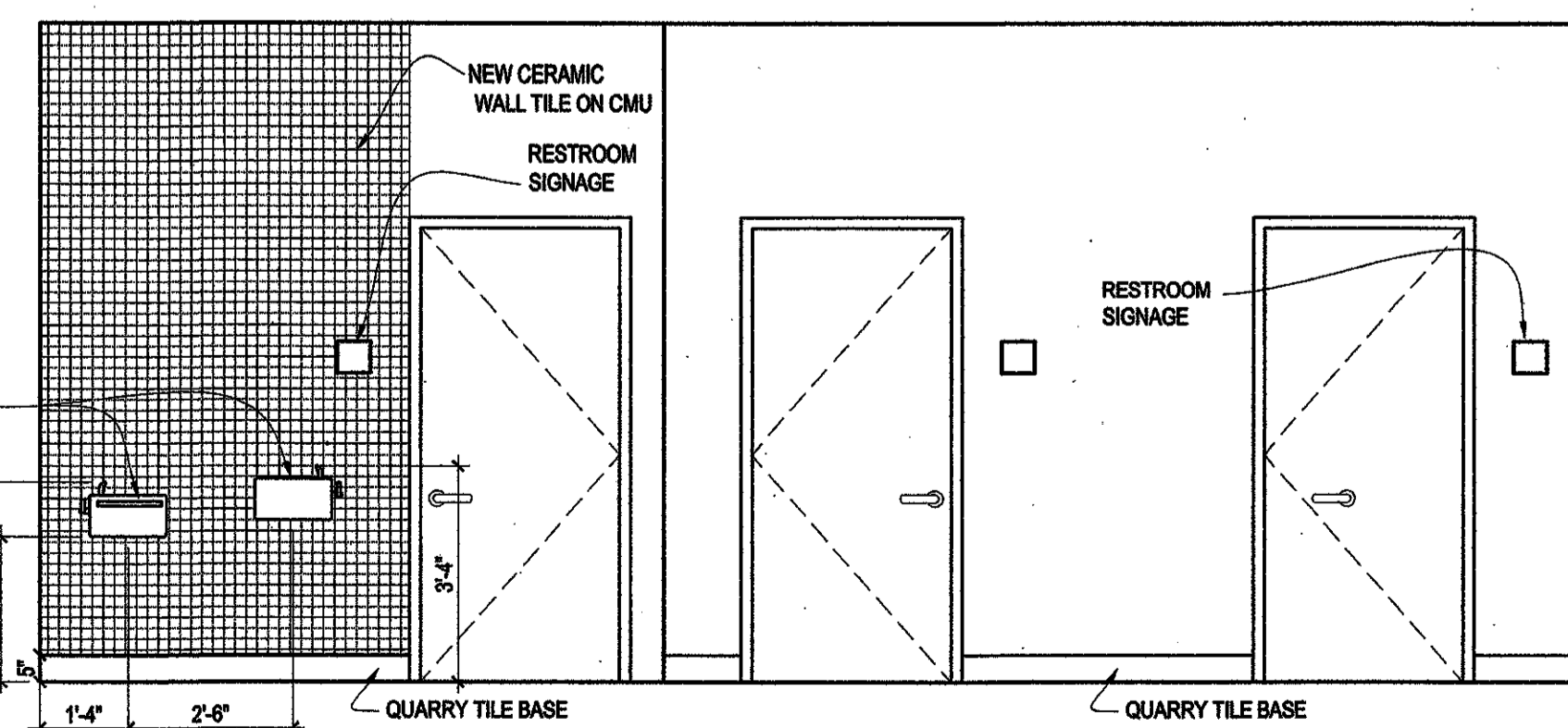
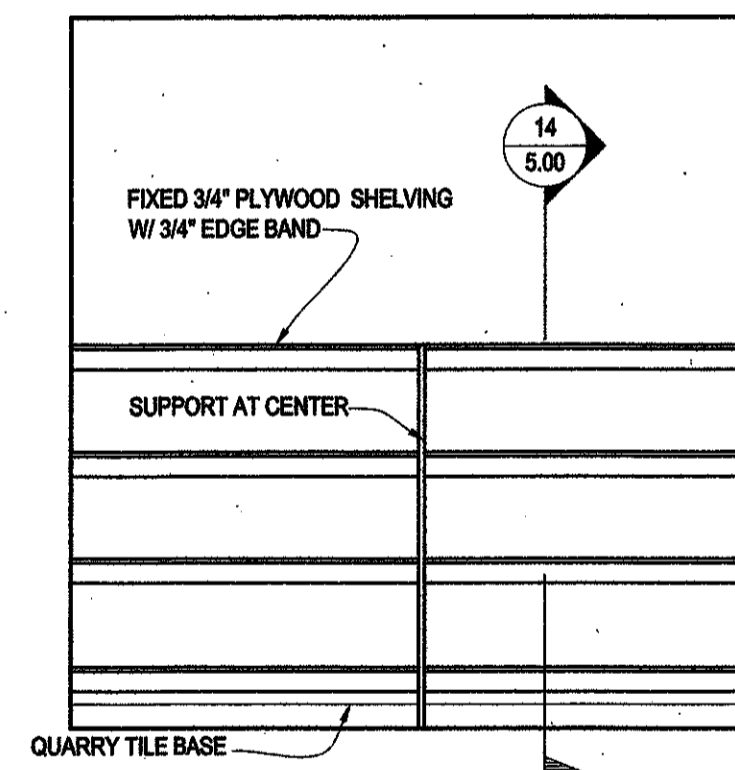
**5** INTERIOR ELEVATION - TYPICAL CLASSROOM  
A4.02 3/8"= 1'-0"



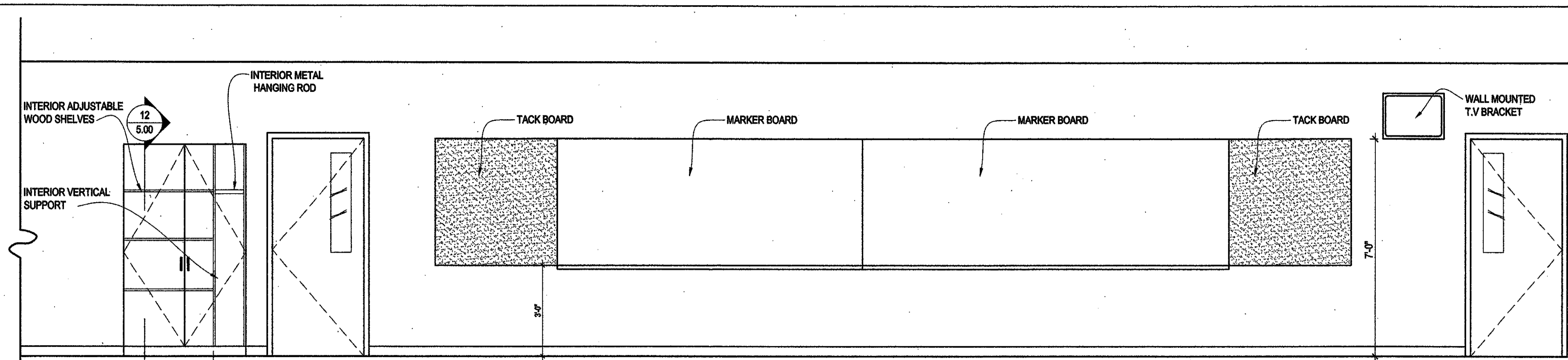
**4** INTERIOR ELEVATION - TYPICAL CLASSROOM  
A4.02 3/8"= 1'-0"



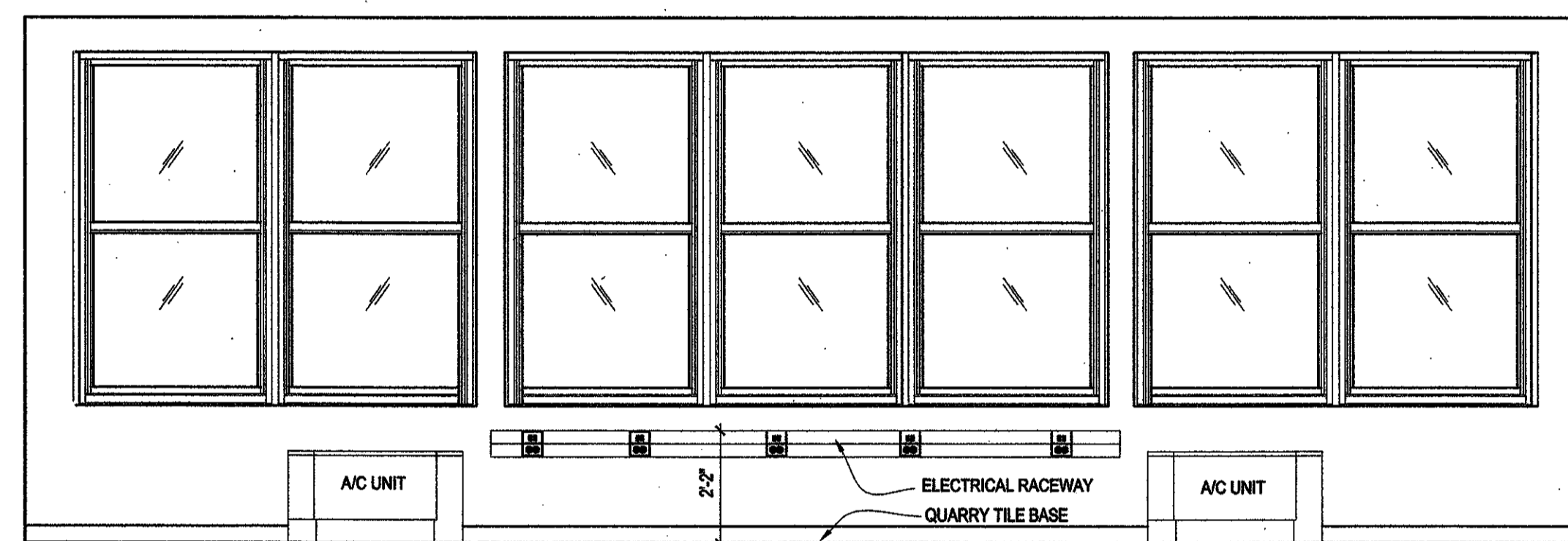
**2/3** INTERIOR ELEVATION - BOOK STORAGE 106  
A4.02 3/8"= 1'-0"



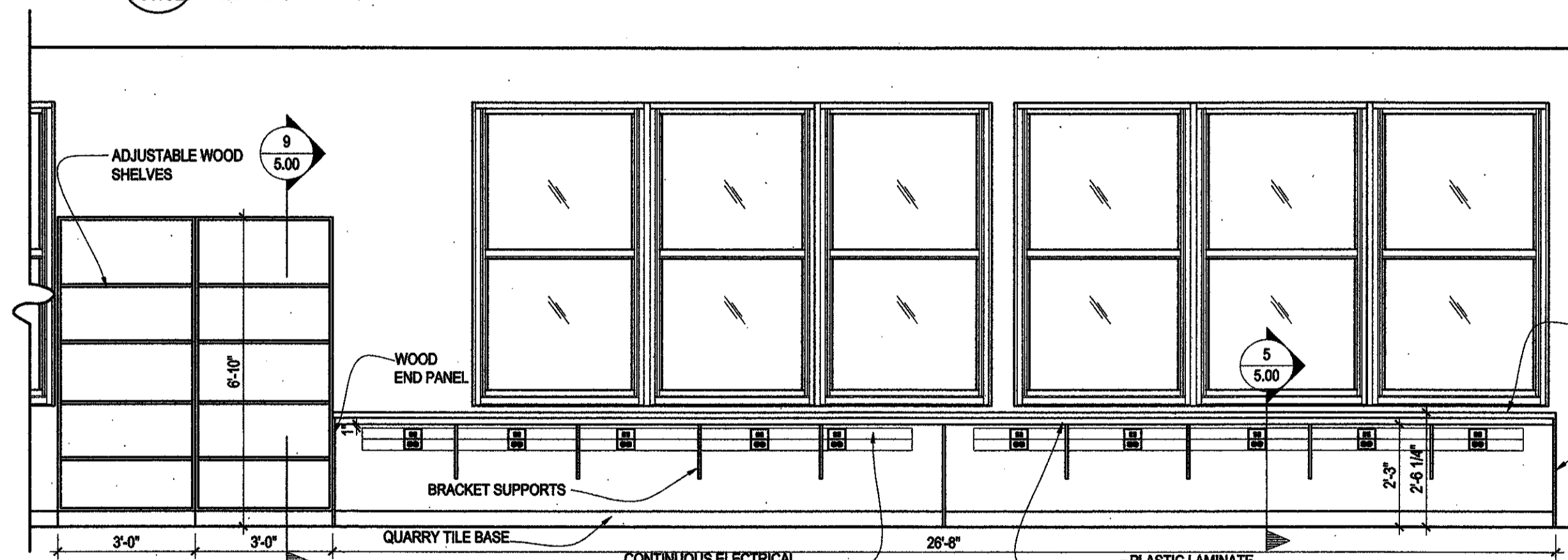
**1** INTERIOR ELEVATION - CORRIDOR 200  
A4.02 3/8"= 1'-0"



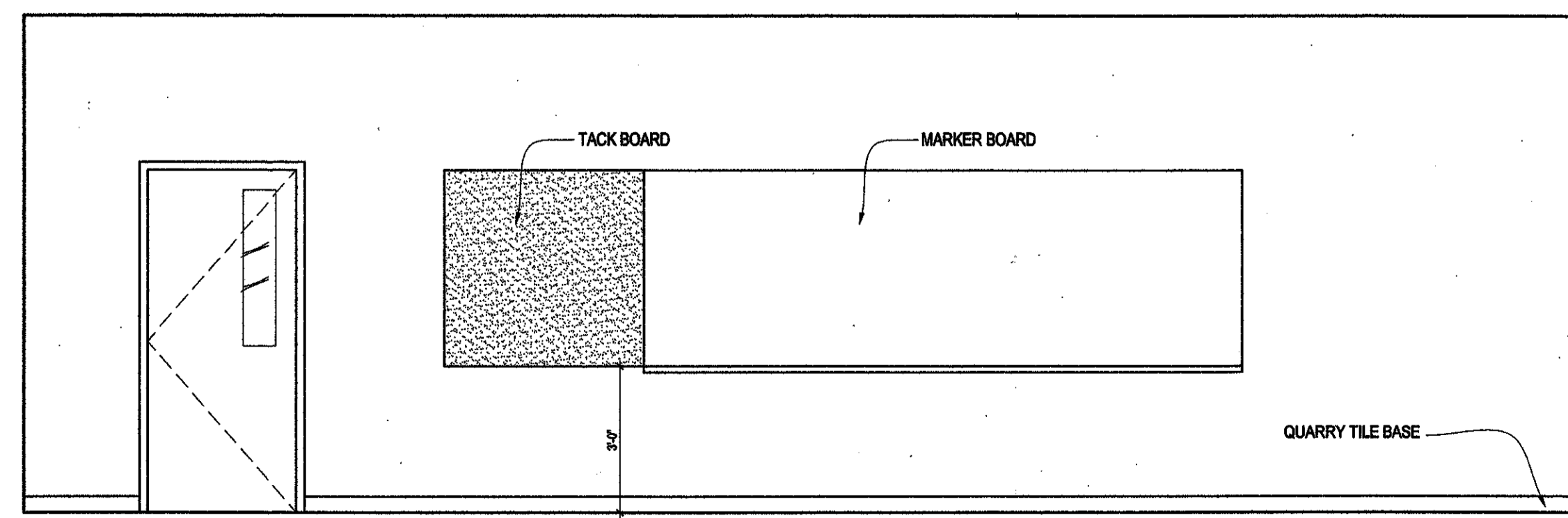
**12** INTERIOR ELEVATION - HOME ECONOMICS  
A4.02 3/8"= 1'-0"



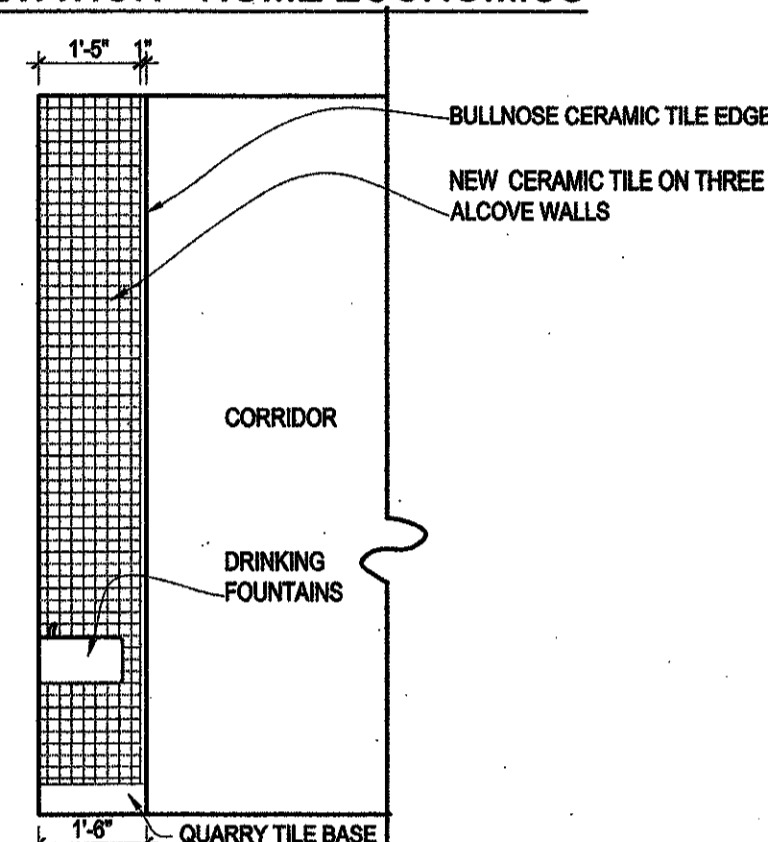
**8** INTERIOR ELEVATION - TYPICAL CLASSROOM  
A4.02 3/8"= 1'-0"



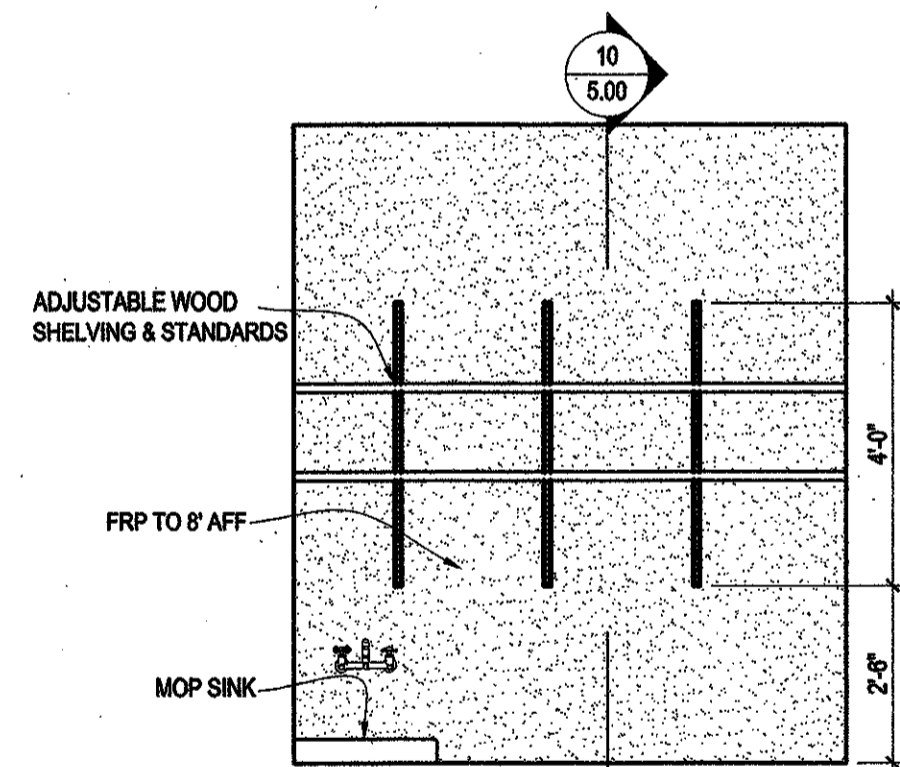
**7** INTERIOR ELEVATION - CLASSROOM 120  
A4.02 3/8"= 1'-0"



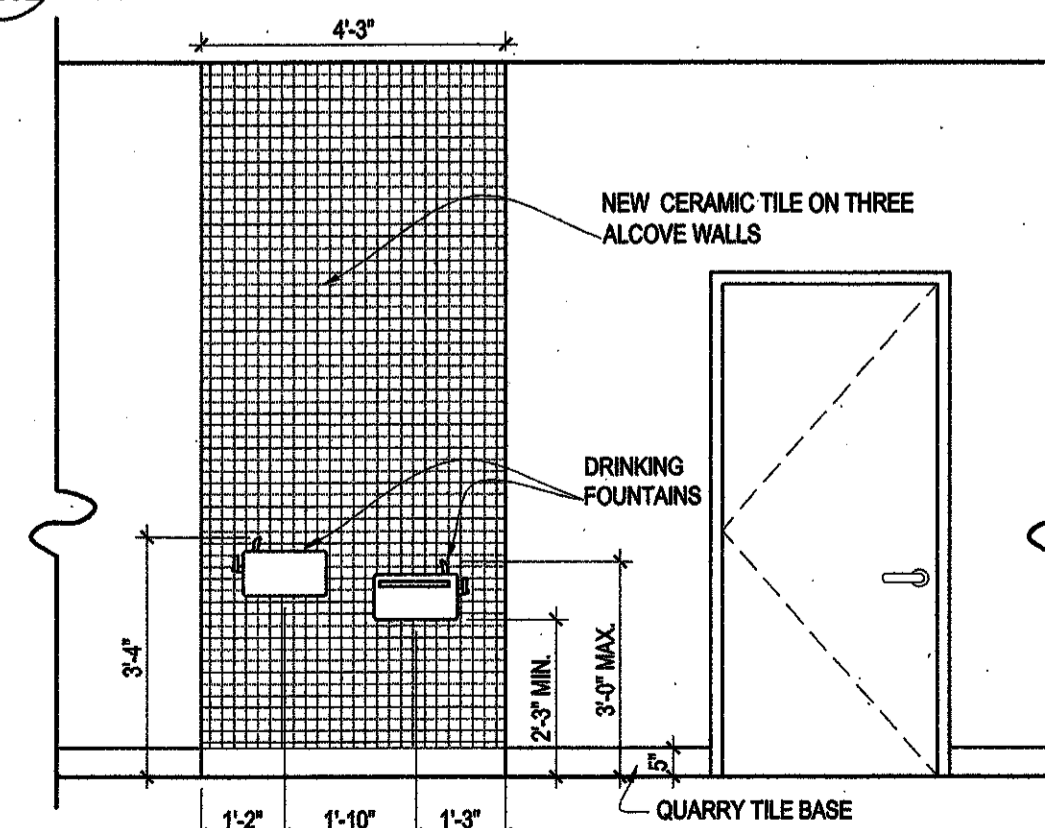
**6** INTERIOR ELEVATION - TYPICAL CLASSROOM  
A4.02 3/8"= 1'-0"



**11** INTERIOR ELEVATION - COORIDOR 100  
A4.02 3/8"= 1'-0"



**10** INTERIOR ELEVATION - JANITOR 122  
A4.02 3/8"= 1'-0"



**9** INTERIOR ELEVATION - CORRIDOR 100  
A4.02 3/8"= 1'-0"