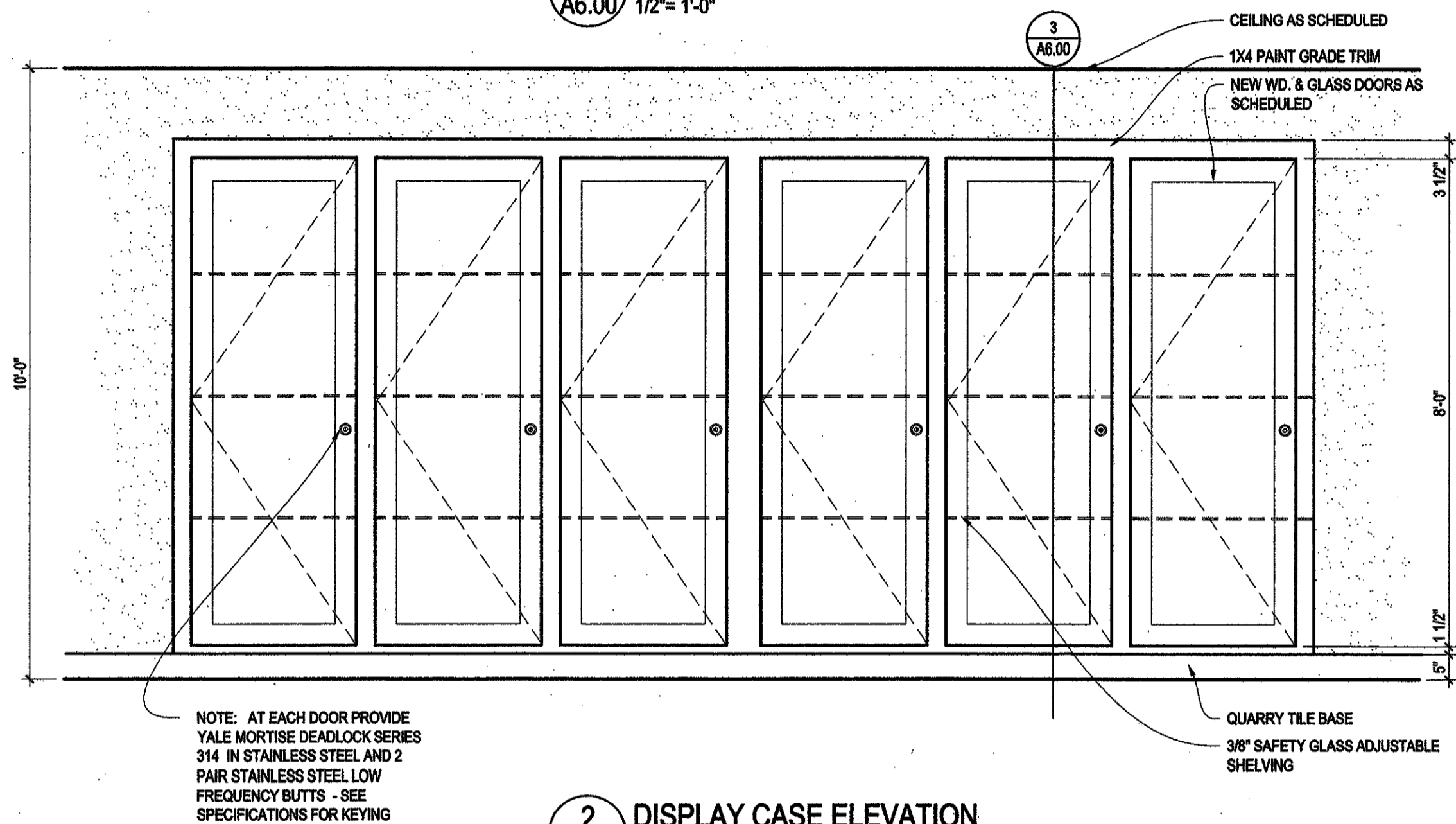
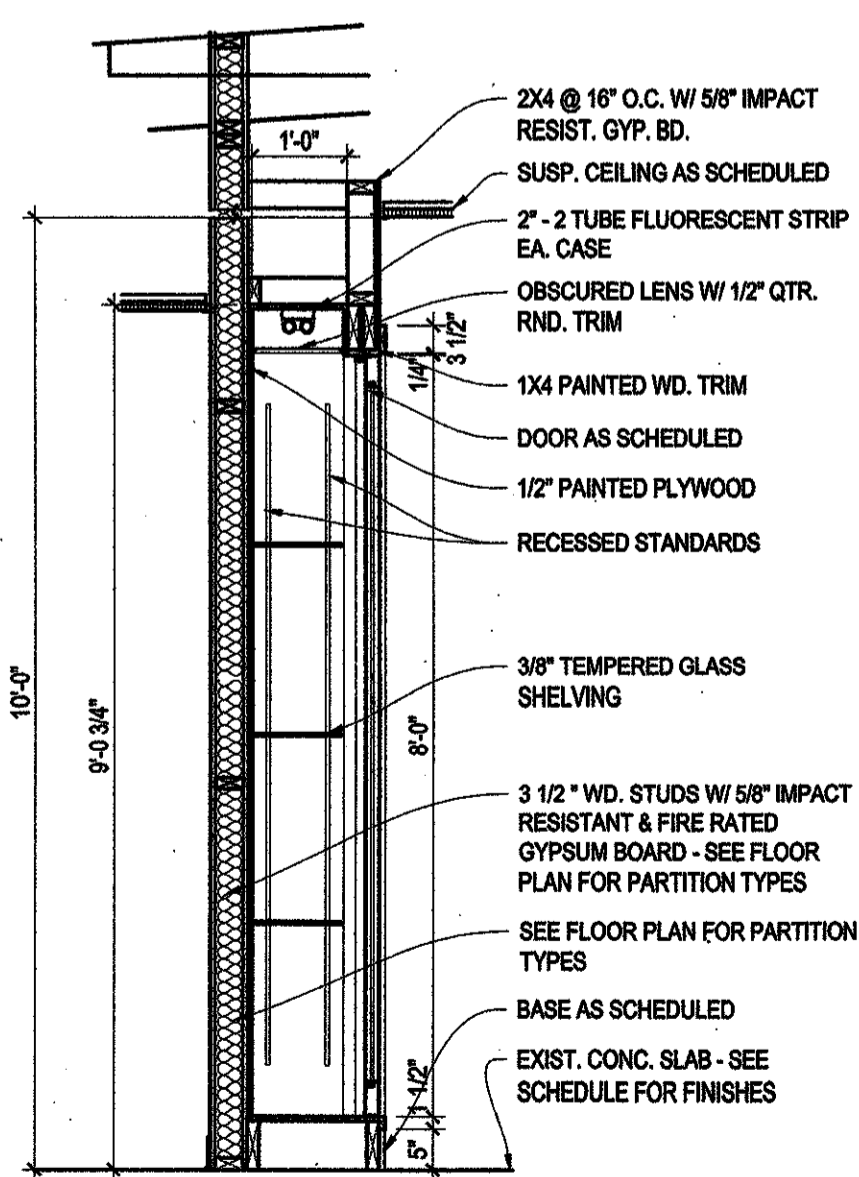


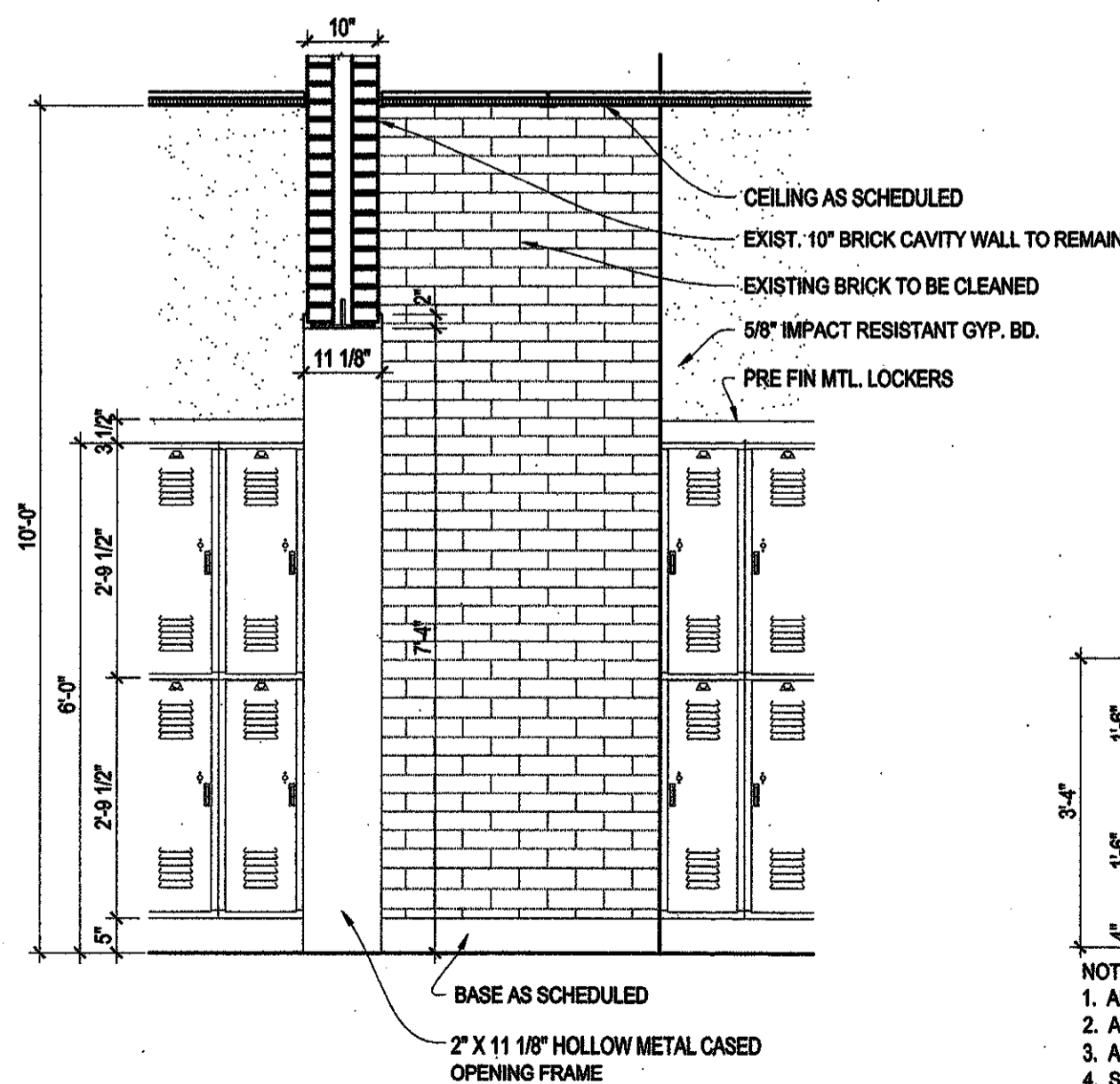
1 DISPLAY CASE PLAN DETAIL
A6.00 1/2" = 1'-0"



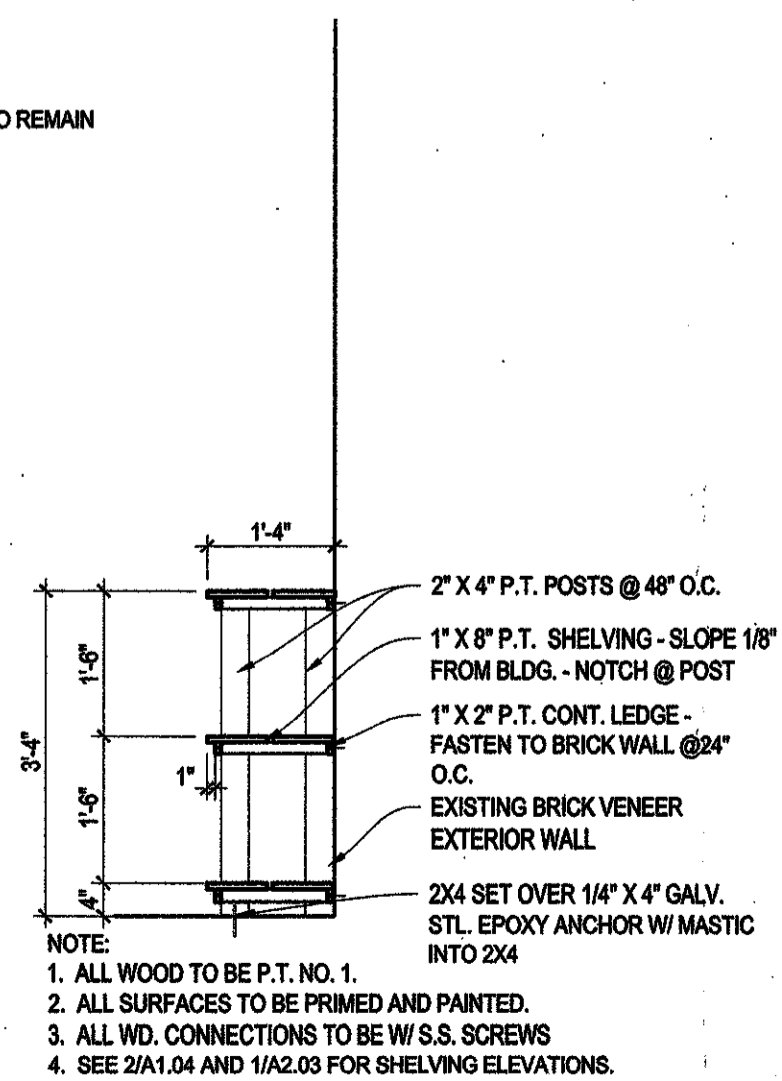
2 DISPLAY CASE ELEVATION
A6.00 1/2" = 1'-0"



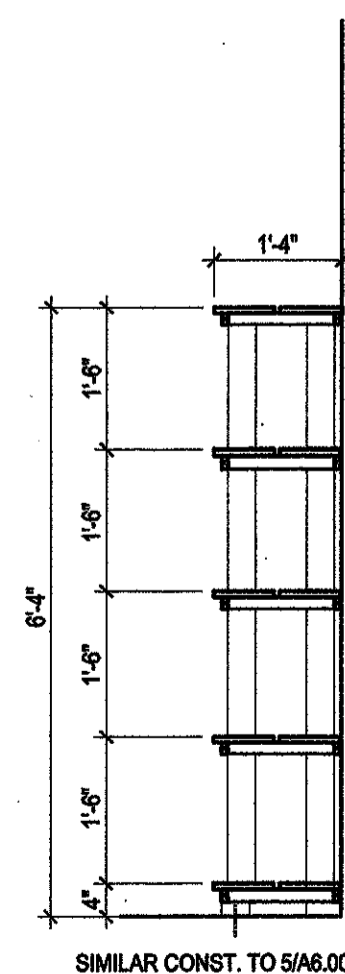
3 DISPLAY CASE SECTION
A6.00 1/2" = 1'-0"



4 DISPLAY CASE SECTION
A6.00 1/2" = 1'-0"



5 EXTERIOR SHELVING
A6.00 1/2" = 1'-0"



6 EXTERIOR SHELVING
A6.00 1/2" = 1'-0"

ROOM FINISH SCHEDULE

ROOM NO.	ROOM NAME	FLOOR	BASE	WALLS				CEILING		MILLWORK		REMARKS
				NORTH	WEST	SOUTH	EAST	TYPES	FINISH	HEIGHT	BODY / SIDE	
CLASSROOM BUILDING "A"												
100	CORRIDOR	SVT-1, SVT-2, SVT-3	QTB-1	P-1	P-1	P-1	P-1	ACT-1	-	10'-0"	-	-
101	HALL	SVT-1	QTB-1	P-1	P-1	P-1	P-1	ACT-1	-	10'-0"	-	-
102	OFFICE #1	SVT-1	QTB-1	P-2	P-2	P-2	P-2	ACT-1	-	9'-6"	-	-
103	OFFICE #2	SVT-1	QTB-1	P-2	P-2	P-2	P-2	ACT-1	-	9'-6"	-	-
104	OFFICE #3	SVT-1	QTB-1	P-2	P-2	P-2	P-2	ACT-1	-	9'-6"	-	-
105	UNISEX TOILET	EP-1	EP-1	WEP, CT	WEP, CT	WEP, CT	WEP, CT	GYP. BD.	P-4	8'-0"	-	-
106	BOOK STORAGE	SVT-1	QTB-1	P-1	P-1	P-1	P-1	ACT-1	-	8'-0"	WD-1	-
107	CLASSROOM #1	SVT-1, SVT-2	QTB-1	P-3	P-3	P-3	P-3	ACT-1	-	10'-0"	WD-1	PL-1
108	NOT USED	-	-	-	-	-	-	-	-	-	-	-
109	ELECTRICAL	SC-1	QTB-1	P-1	P-1	P-1	P-1	-	-	8'-0"	-	-
110	CLASSROOM #2	SVT-1, SVT-2	QTB-1	P-3	P-3	P-3	P-3	ACT-1	-	10'-0"	WD-1	PL-1
111	CLASSROOM #3	SVT-1, SVT-2	QTB-1	P-3	P-3	P-3	P-3	ACT-1	-	10'-0"	WD-1	PL-1
112	CLASSROOM #4	SVT-1, SVT-2	QTB-1	P-3	P-3	P-3	P-3	ACT-1	-	10'-0"	WD-1	PL-1
113	NOT USED	-	-	-	-	-	-	-	-	-	-	-
114	CLASSROOM #5	SVT-1, SVT-2	QTB-1	P-3	P-3	P-3	P-3	ACT-1	-	10'-0"	WD-1	PL-1
115	NOT USED	-	-	-	-	-	-	-	-	-	WD-1	-
116	CLASSROOM #6	SVT-1, SVT-2	QTB-1	P-3	P-3	P-3	P-3	ACT-1	-	10'-0"	WD-1	PL-1
117	NOT USED	-	-	-	-	-	-	-	-	-	-	-
118	CAREER LAB	SVT-1, SVT-2	RSB-1	P-3	P-3	P-3	P-3	ACT-1	-	10'-0"	WD-1	PL-1
118A	STORAGE	SVT-1	RSB-1	P-1	P-1	P-1	P-1	GYP. BD.	P-4	8'-0"	WD-1	-
119	RESOURCE CLASSROOM	SVT-1, SVT-2	QTB-1	P-3	P-3	P-3	P-3	ACT-1	-	10'-0"	WD-1	PL-2
119A	STORAGE	SVT-1	QTB-1	P-1	P-1	P-1	P-1	GYP. BD.	P-4	8'-0"	WD-1	-
119B	STORAGE	SVT-1	QTB-1	P-1	P-1	P-1	P-1	GYP. BD.	P-4	8'-0"	WD-1	-
120	HOME ECONOMICS	SVT-1	QTB-1	P-3	P-3	P-3	P-3	ACT-1	-	10'-0"	WD-1	PL-2
121	BOYS RESTROOM	EP-1	EP-1	WEP, CT	WEP, CT	WEP, CT	WEP, CT	GYP. BD.	P-4	9'-6"	-	-
122	JANITOR CLOSET	SVT-1	QTB-1	FRP	P-1	P-1	P-1	GYP. BD.	P-4	8'-0"	WD-1	-
123	GIRLS RESTROOM	EP-1	EP-1	WEP, CT	WEP, CT	WEP, CT	WEP, CT	GYP. BD.	P-4	9'-6"	-	-
124	CLASSROOM #7	SVT-1, SVT-2	QTB-1	P-3	P-3	P-3	P-3	ACT-1	-	10'-0"	WD-1	PL-1
124A	CLOSET	SVT-1	QTB-1	P-1	P-1	P-1	P-1	GYP. BD.	P-4	8'-0"	WD-1	-
CLASSROOM BUILDING "B"												
200	CORRIDOR	SVT-MATCH EXIST	QTB-1	P-1	P-1	P-1	P-1	ACT-1	-	11'-2" +/-	-	MATCH EXISTING CLG. HT.
201	GIRLS RESTROOM	EP-1	EP-1	WEP, CT	WEP, CT	WEP, CT	WEP, CT	GYP. BD.	P-4	9'-6"	-	-
202	ADA TOILET	EP-1	EP-1	WEP, CT	WEP, CT	WEP, CT	WEP, CT	GYP. BD.	P-4	8'-0"	-	-
203	BOYS RESTROOM	EP-1	EP-1	WEP, CT	WEP, CT	WEP, CT	WEP, CT	GYP. BD.	P-4	9'-6"	-	-

GENERAL NOTES

1. SEE FLOOR PATTERN PLAN ON SHEETS A1.02 & A2.01 FOR FLOOR PATTERNS.

FINISH LEGEND

KEY	FINISH	SIZE	REMARKS
P-1	PAINT		
P-2	PAINT		
P-3	PAINT		
P-4	CEILING PAINT		
WEP	EPOXY WALL PAINT		
FRP	FIBERGLASS REINFORCED PANEL		
CT-1	CERAMIC TILE	4"x4" WALL TILE	
CT-2	CERAMIC TILE	4"x4" WALL TILE	
CT-3	CERAMIC TILE	4"x4" WALL TILE	
CT-4	CERAMIC TILE	4"x4" WALL TILE	
SVT-1	SOLID VINYL TILE	24"x24" FLOOR TILE	
SVT-2	SOLID VINYL TILE	24"x24" FLOOR TILE	
SVT-3	SOLID VINYL TILE	24"x24" FLOOR TILE	
SVT-4	SOLID VINYL TILE	24"x24" FLOOR TILE	
QT-1	QUARRY TILE	8"x8" FLOOR TILE	
CPT-1	CARPET		
EP-1	EPOXY FLOORING & 6" BASE		
SC-1	SEALED CONCRETE		
PL-1	PLASTIC LAMINATE		
PL-2	PLASTIC LAMINATE		
RSB-1	RESILIENT BASE	4" BASE	
QTB-1	QUARRY TILE BASE	5"x6" BASE	

VergesRome
Architects
320 N. Carrollton Avenue, Suite 100
New Orleans, Louisiana 70119
t. 504.488.7739 f. 504.488.7743
www.VergesRome.com
© copyright 2009

**RENOVATIONS AND ADDITION
TO CLASSROOM BUILDINGS
FOLSOM JR. HIGH SCHOOL
ST. TAMMANY PARISH SCHOOL BOARD**
FOLSOM, LOUISIANA
83055 HAY HOLLOW ROAD

DATE ISSUED: 10 JUNE 2009
REVISIONS:
REVISIONS:
REVISIONS:
REVISIONS:
DRAWN BY: BEB
CHECKED BY: CEV
PHASE: CONSTRUCTION DOCUMENTS

08060

TITLE: FINISH SCHEDULE

SHEET: **A6.00**