

**RENOVATIONS AND ADDITION
TO CLASSROOM BUILDINGS
FOLSOM JR. HIGH SCHOOL
ST. TAMMANY PARISH SCHOOL BOARD**

FOLSOM, LOUISIANA

8305 HAY HOLLOW ROAD

DATE ISSUED: 10 JUNE 2009

REVISED:

REVISED:

REVISED:

REVISED:

DRAWN BY: RAB

CHECKED BY: CEV

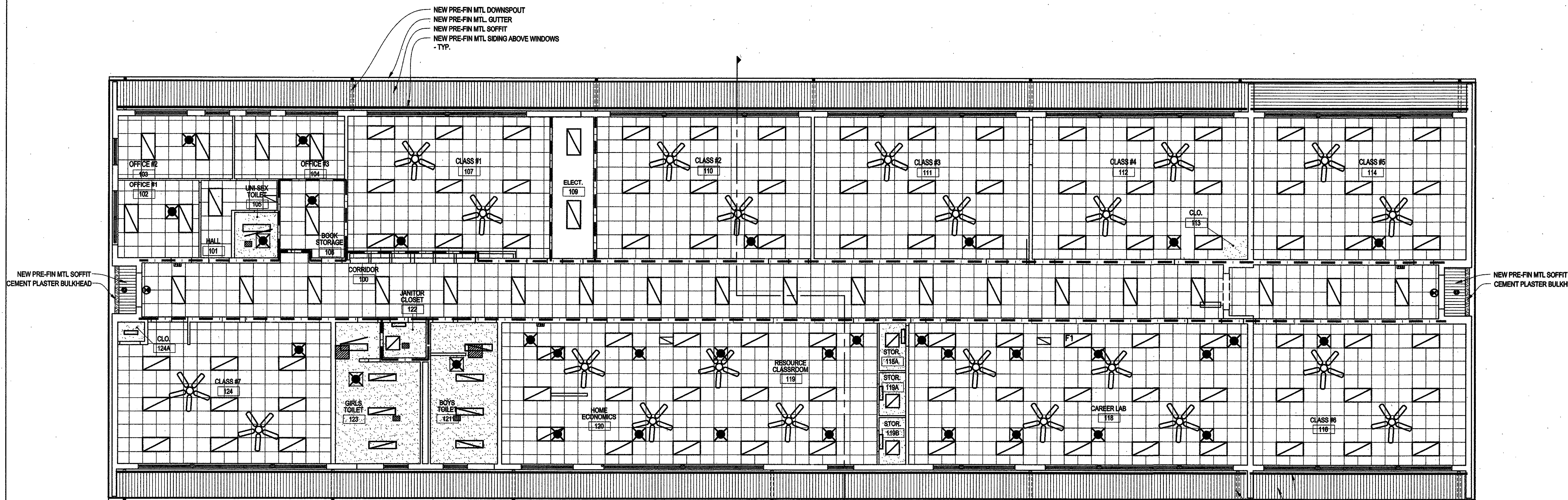
PHASE: CONSTRUCTION DOCUMENTS

08060

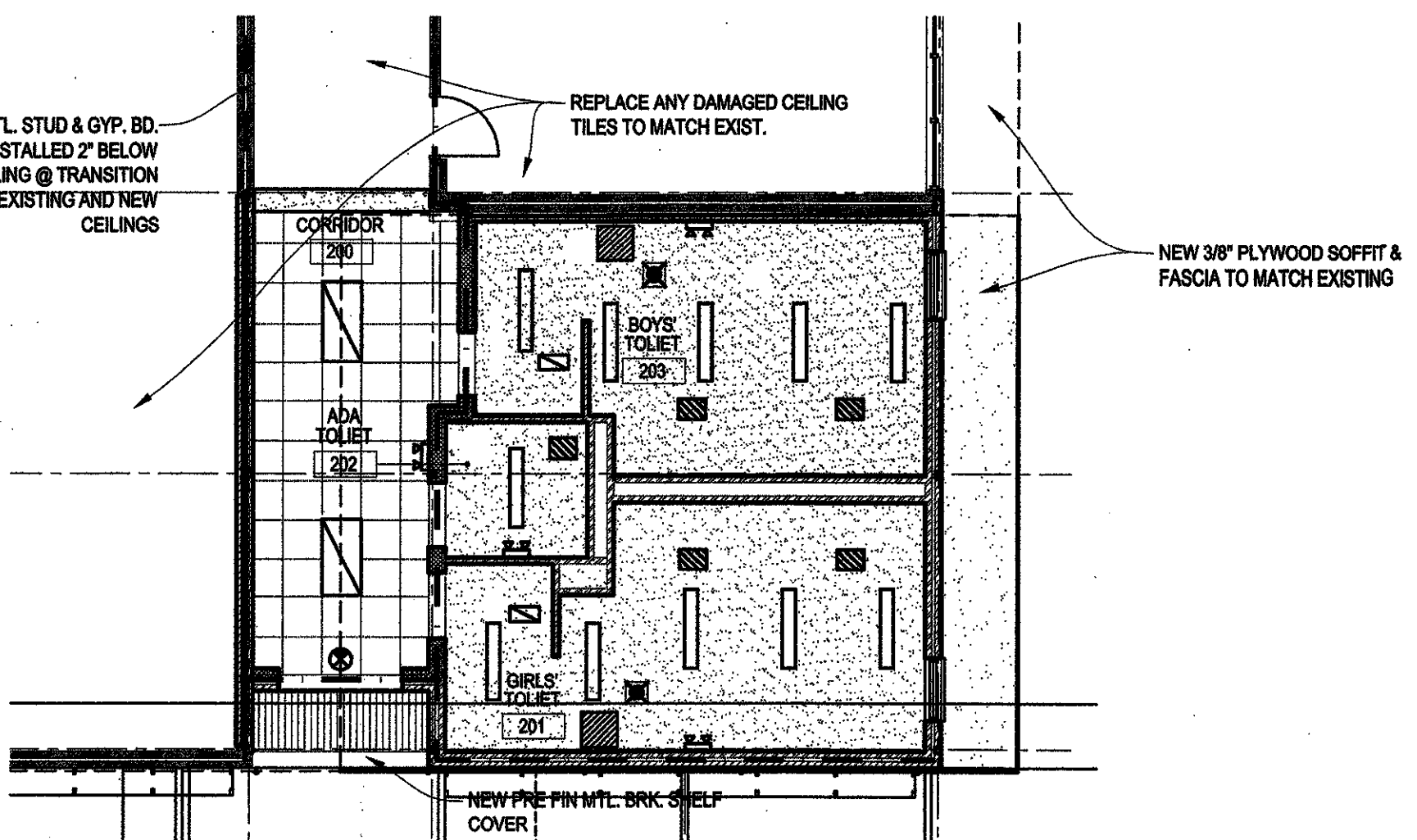
TITLE: REFLECTED CEILING PLAN
CLASS. BLDG. "A" & "B"

SHEET:

A7.00



1 REFLECTED CEILING PLAN - CLASSROOM BLDG. "A"
A7.00 1/8" = 1'-0"



2 REFLECTED CEILING PLAN - CLASSROOM BLDG. "B"
A7.00 1/8" = 1'-0"

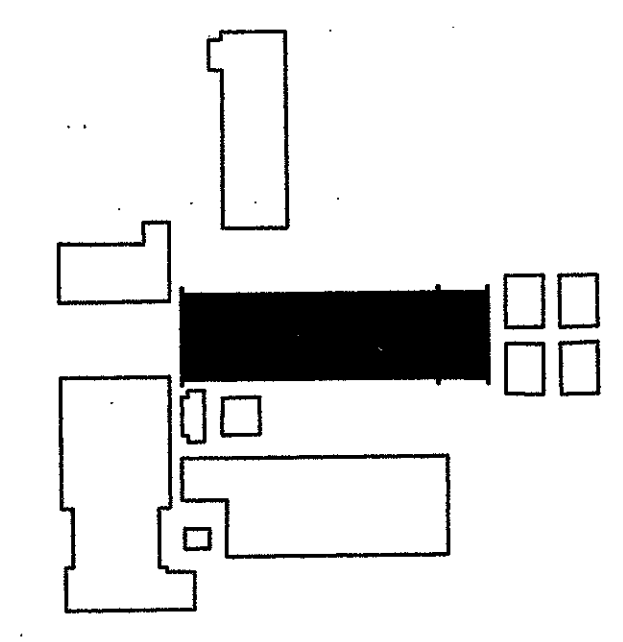
CEILING LEGEND

| | | | | | | | | | |
|--|---|--|--|--|----------------------------------|--|---------------------------|--|----------------------------------|
| | 2X2 ACOUSTICAL TILES & GRID, STANDARD | | RECESSED FLUORESCENT LENSED LAY-IN LIGHT FIXTURE W/ BATTERY BACKUP | | RECESSED COMPACT FLUORESCENT | | AIR DIFFUSER | | 62" CEILING FAN |
| | PAINTED GYPSUM BOARD | | 1'X 4' SURFACE MTD. FLUORESCENT LIGHT FIXTURE | | SURFACE MTD. COMPACT FLUORESCENT | | RETURN AIR | | SPEAKER SYSTEM |
| | CEMENT PLASTER SOFFIT | | RECESSED 2'X 2' FLUORESCENT LENSED LAY-IN LIGHT FIXTURE | | WALL MOUNT EXIT SIGN | | EXHAUST FAN | | SURFACE MTD. COMPACT FLUORESCENT |
| | PRE-FIN MTL SOFFIT | | RECESSED 2'X 2' FLUORESCENT LENSED LAY-IN LIGHT FIXTURE | | OCCUPANCY SENSOR | | FIRE ALARM SMOKE DETECTOR | | EMERGENCY LIGHTING |
| | SURFACE-MOUNT STRIP FLUORESCENT FIXTURE | | RECESSED 2'X 2' FLUORESCENT LENSED LAY-IN LIGHT FIXTURE | | CEILING MOUNT POWER OUTLET | | FIRE ALARM HEAT DETECTOR | | CEILING HEATER |

NEW PRE-FIN SIDING OVER WINDOWS - TYP.
NEW PRE-FIN MTL SOFFIT
NEW PRE-FIN MTL GUTTER
NEW PRE-FIN MTL DOWNSPOUT

NEW PRE-FIN MTL SOFFIT
CEMENT PLASTER BULKHEAD

NEW PRE-FIN MTL SOFFIT
CEMENT PLASTER BULKHEAD



KEY PLAN



NORTH