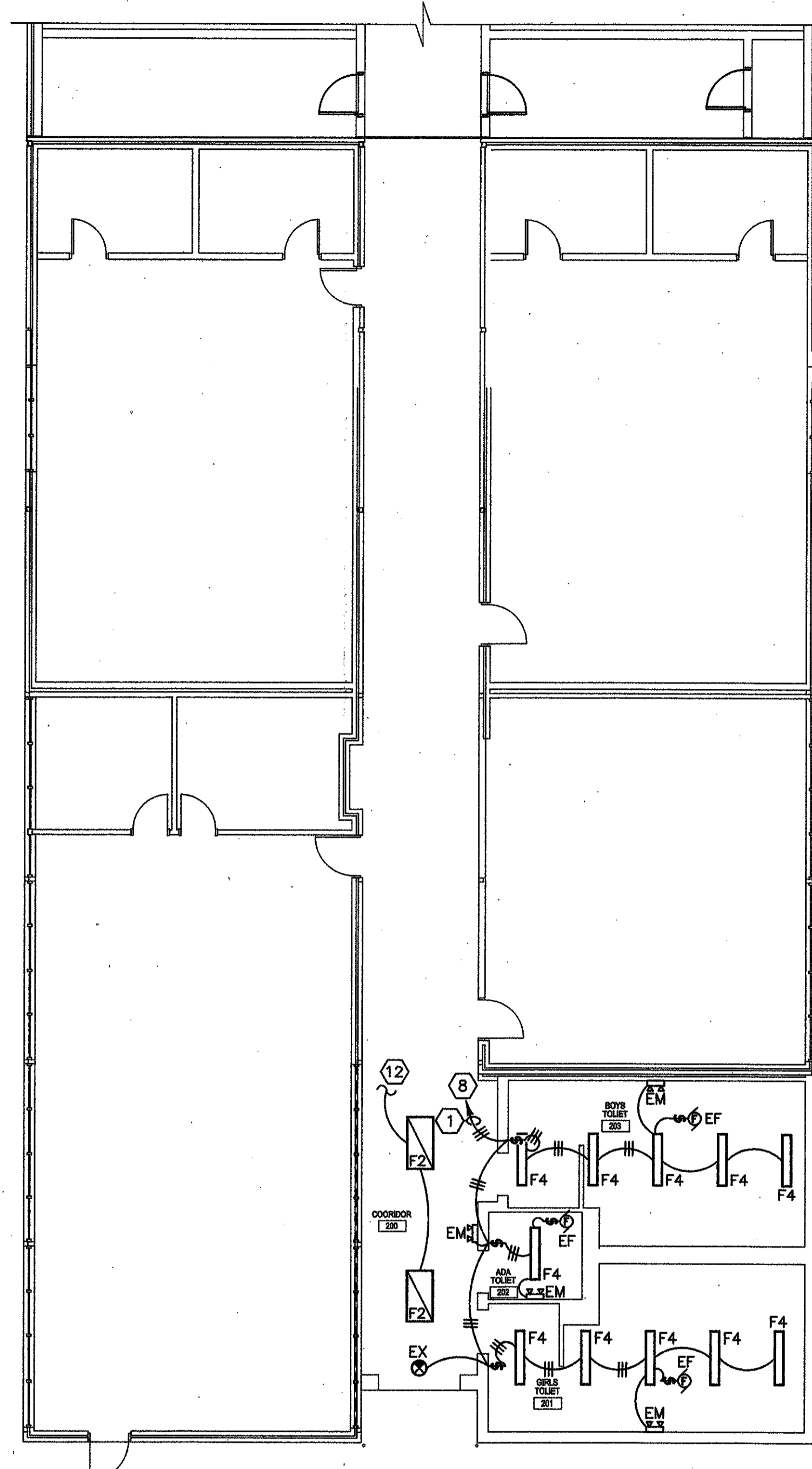
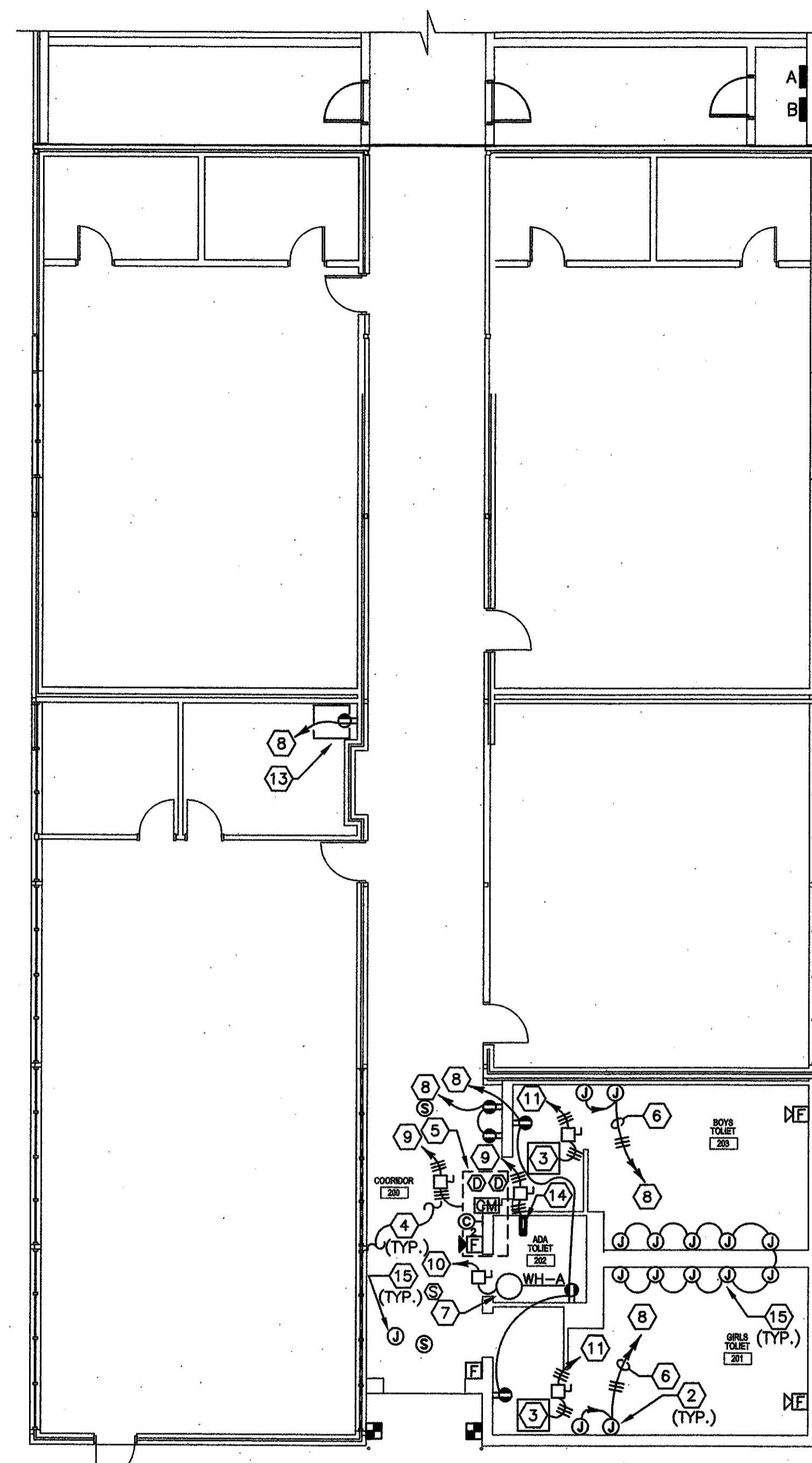


1 ELECTRICAL DEMOLITION PLAN - CLASSROOM BLDG. "B" - PARTIAL
E2.00 1/4" = 1'-0"



2 LIGHTING PLAN - CLASSROOM BLDG. "B" - PARTIAL
E2.00 1/4" = 1'-0"



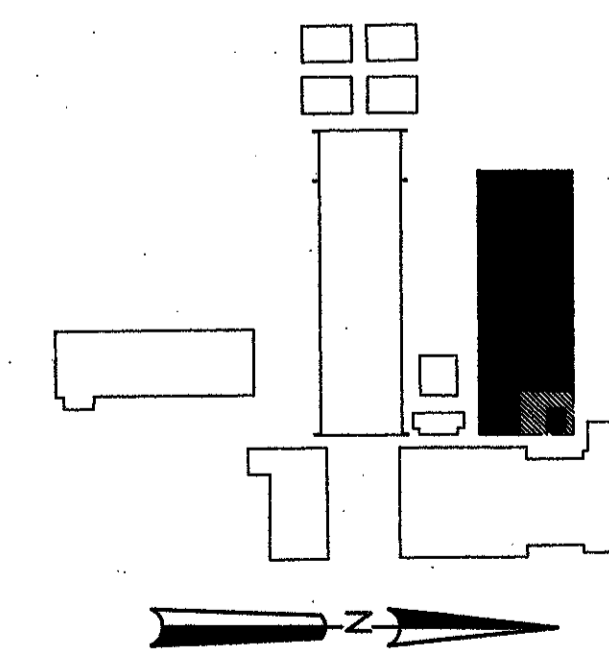
3 POWER PLAN - CLASSROOM BLDG. "B" - PARTIAL
E2.00 1/4" = 1'-0"

ELECTRICAL KEY NOTES

- ① 3/4" CONDUIT WITH TWO (2) #10 AWG CONDUCTORS & #10 AWG GROUND.
- ② HAND DRYER (20A, 120V)
- ③ ELECTRIC HEATER (13.9 MCA, 208V, 3Ø)
30A FUSIBLE DISCONNECT SWITCH, 3Ø, 3W, 250V, NEMA 1, FUSED AT 20A
3/4" CONDUIT WITH THREE (3) #10 AWG CONDUCTORS & #10 AWG GROUND.
- ④ CONTRACTOR SHALL PROVIDE A COMPLETE FIRE ALARM SYSTEM EXPANSION PER THE REQUIREMENTS OF NFPA 72 AND THE STATE FIRE MARSHAL'S OFFICE.
- ⑤ ROOF TOP UNIT NO.1 (37.6 FLA, 208V, 3Ø)
60A FUSIBLE DISCONNECT SWITCH, 3Ø, 3W, 250V, NEMA 3R, FUSED AT 30A
1" CONDUIT WITH THREE (3) #6 AWG CONDUCTORS & #10 AWG GROUND.
- ⑥ 3/4" CONDUIT WITH THREE (3) #10 AWG CONDUCTORS & #10 AWG GROUND.
- ⑦ ELECTRIC WATER HEATER WH-A (6 KW, 208V, 1Ø)
60A FUSIBLE DISCONNECT SWITCH, 1Ø, 3W, 250V, NEMA 1, FUSED AT 40A
3/4" CONDUIT WITH TWO (2) #8 AWG CONDUCTORS & #10 AWG GROUND.
- ⑧ CONNECT INDICATED CIRCUIT TO EXISTING 20A/1P BREAKER IN THE PANEL "B". IF MORE CIRCUITS ARE REQUIRED, ADD 20A/1P BREAKERS AS NECESSARY.
- ⑨ CONNECT INDICATED CIRCUIT TO EXISTING 60A/3P BREAKER IN THE PANEL "A". IF MORE CIRCUITS ARE REQUIRED, ADD 60A/3P BREAKERS AS NECESSARY.

- ⑩ CONNECT INDICATED CIRCUIT TO EXISTING 50A/2P BREAKER IN THE PANEL "A". IF MORE CIRCUITS ARE REQUIRED, ADD 50A/2P BREAKERS AS NECESSARY.
- ⑪ CONNECT INDICATED CIRCUIT TO EXISTING 30A/3P BREAKER IN THE PANEL "A". IF MORE CIRCUITS ARE REQUIRED, ADD 30A/3P BREAKERS AS NECESSARY.
- ⑫ CONNECT TO EXISTING HALLWAY LIGHTING CIRCUIT.
- ⑬ CONTRACTOR SHALL COORDINATE THE RELOCATION OF THE MAIN DISTRIBUTION FRAME (20A, 120V) AND FIELD VERIFY THE ROUTING OF 2" CONDUIT ABOVE THE CEILING TO A JUNCTION BOX ON THE EXTERIOR OF THE BUILDING FOR THE INTERCONNECTION OF THE DATA SYSTEM.
- ⑭ ELECTRIC DUCT HEATER (12 KW, 208V, 3Ø)
60A FUSIBLE DISCONNECT SWITCH, 3Ø, 3W, 250V, NEMA 1, FUSED AT 50A
1" CONDUIT WITH THREE (3) #6 AWG CONDUCTORS & #10 AWG GROUND.
- ⑮ MAKE FINAL ELECTRICAL CONNECTIONS TO WATER CLOSET ELECTRONIC INFRARED SENSORS IN ACCORDANCE WITH MANUFACTURERS RECOMMENDATIONS. PROVIDE DISCONNECTING MEANS PER THE REQUIREMENTS OF THE NATIONAL ELECTRICAL CODE AND IF NECESSARY PROVIDE SECONDARY FUSING ON TRANSFORMER.
- ⑯ UNLESS NOTED OTHERWISE, ALL OF THE EXISTING ELECTRICAL EQUIPMENT CURRENTLY LOCATED IN THE AREAS OF DEMOLITION, WHETHER SPECIFICALLY INDICATED ON THIS DRAWING OR NOT, SHALL BE DISCONNECTED AND REMOVED FROM SERVICE. THE OWNER HAS FIRST RIGHT OF REFUSAL ON ALL REMOVED ITEMS. ALL ITEMS NOT WANTED BY THE OWNER SHALL BE PROPERLY DISPOSED OF OFFSITE BY THE CONTRACTOR IN ACCORDANCE WITH THE LAW. CARE SHALL BE TAKEN TO MAINTAIN CIRCUIT CONTINUITY TO ALL EXISTING ELECTRICAL DEVICES TO REMAIN. SEE ARCHITECTURAL DRAWINGS FOR EXACT AREAS OF DEMOLITION.

- ⑰ EXISTING CONDUIT; REMOVE ALL INACTIVE CONDUIT AND WIRES THAT WILL BE EXPOSED WHEN NEW CEILINGS AND WALL FINISHES ARE COMPLETE; ACTIVE WIRING AND CONDUIT THAT WOULD BE EXPOSED SHALL BE RELOCATED ABOVE OR BEHIND NEW FINISHED CEILINGS AND/OR WALLS. CONTRACTOR SHALL FIELD INSPECT PRIOR TO BIDDING PROJECT.



KEY PLAN

drake engineering
56 MARK SMITH DR. MANDEVILLE, LA 70471 (504) 382-3038 PROJECT No. 0552A08



**RENOVATIONS AND ADDITION
TO CLASSROOM BUILDINGS
FOLSOM JR. HIGH SCHOOL
ST. TAMMANY PARISH SCHOOL BOARD**
FOLSOM, LOUISIANA
83055 HAY HOLLOW ROAD

DATE ISSUED:	10 JUNE 2009
REVISED:	
REVISED:	
REVISED:	
DRAWN BY:	TPD, MBK
CHECKED BY:	RCO

CONSTRUCTION DOCUMENTS

08060

**TITLE: DEMOLITION,
LIGHTING, & POWER PLAN
CLASSROOM BLDG. "B"**

SHEET:

E2.00