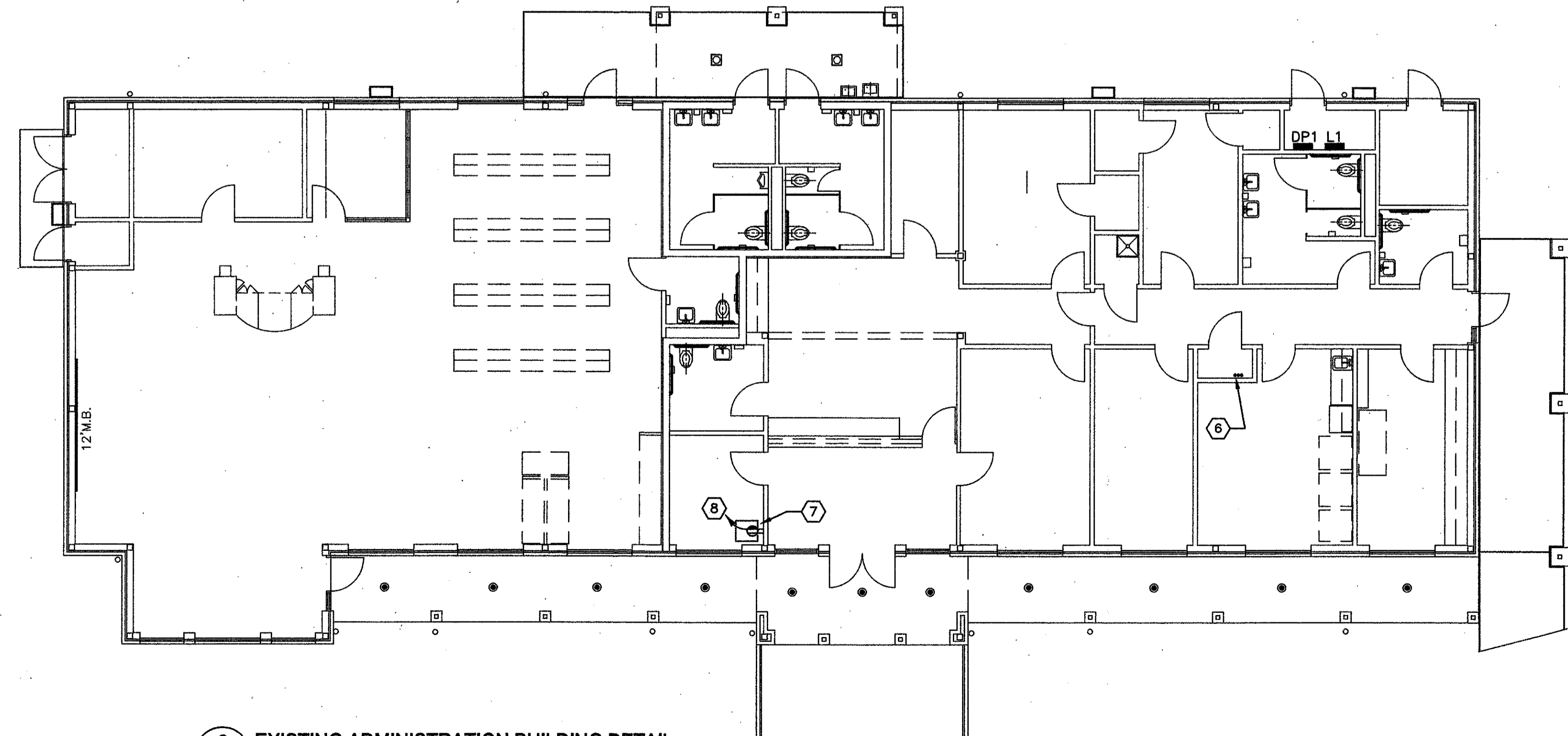


1 SPECIAL SYSTEMS RISER DIAGRAM  
E4.01 NTS



2 EXISTING ADMINISTRATION BUILDING DETAIL  
E4.01 1/8"=1'-0"

ELECTRICAL NOTES:

- ① 2" CONDUIT WITH PULL STRING TO NEMA 3R JUNCTION BOX ON THE EXTERIOR OF THE BUILDING. SIZE JUNCTION BOX AS NECESSARY.
- ② 2" CONDUIT WITH PULL STRING.
- ③ PROVIDE A JUNCTION BOX TO MAKE NECESSARY CONNECTIONS FOR RELOCATED "MDF". SIZE JUNCTION BOX AS NECESSARY.
- ④ PROVIDE A JUNCTION BOX TO MAKE NECESSARY CONNECTIONS FOR RELOCATED "INTERCOM CABINET". SIZE JUNCTION BOX AS NECESSARY.
- ⑤ FIELD VERIFY EXACT CONDUIT ROUTING PRIOR TO BIDDING THE PROJECT.
- ⑥ THREE (3) 2" EXISTING CONDUITS STUBBED UP SHALL BE UTILIZED FOR THE CLOCK, FIRE ALARM, INTERCOM, DATA, TELEPHONE, CATV, AND SECURITY SYSTEMS
- ⑦ CONTRACTOR SHALL COORDINATE THE RELOCATION OF THE INTERCOM CABINET (20A, 120V) AND FIELD VERIFY THE ROUTING OF 2" CONDUIT ABOVE THE CEILING FROM THE SPECIAL SYSTEMS CLOSET FOR THE INTERCONNECTION OF THE SYSTEM.
- ⑧ CONNECT INDICATED CIRCUIT TO EXISTING 20A/1P BREAKER IN THE PANEL "L1". IF MORE CIRCUITS ARE REQUIRED, ADD 20A/1P BREAKERS AS NECESSARY.
- ⑨ EXISTING 2" CONDUITS STUBBED UP IN ADMINISTRATION SPECIAL SYSTEMS CLOSET. VERIFY ROUTING OF CONDUIT PRIOR TO BID.



**RENOVATIONS AND ADDITION  
TO CLASSROOM BUILDINGS  
FOLSOM JR. HIGH SCHOOL BOARD  
ST. TAMMANY PARISH SCHOOL BOARD**  
 FOLSOM, LOUISIANA  
 8085 HAY HOLLOW ROAD

DATE ISSUED: 10 JUNE 2009  
 REVISED:  
 REVISED:  
 REVISED:  
 REVISED:  
 DRAWN BY: TPD, MBK  
 CHECKED BY: RCO  
 PHASE:  
**CONSTRUCTION DOCUMENTS**

**08060**

TITLE:  
**SPECIAL SYSTEMS RISERS**

SHEET:  
**E4.01**