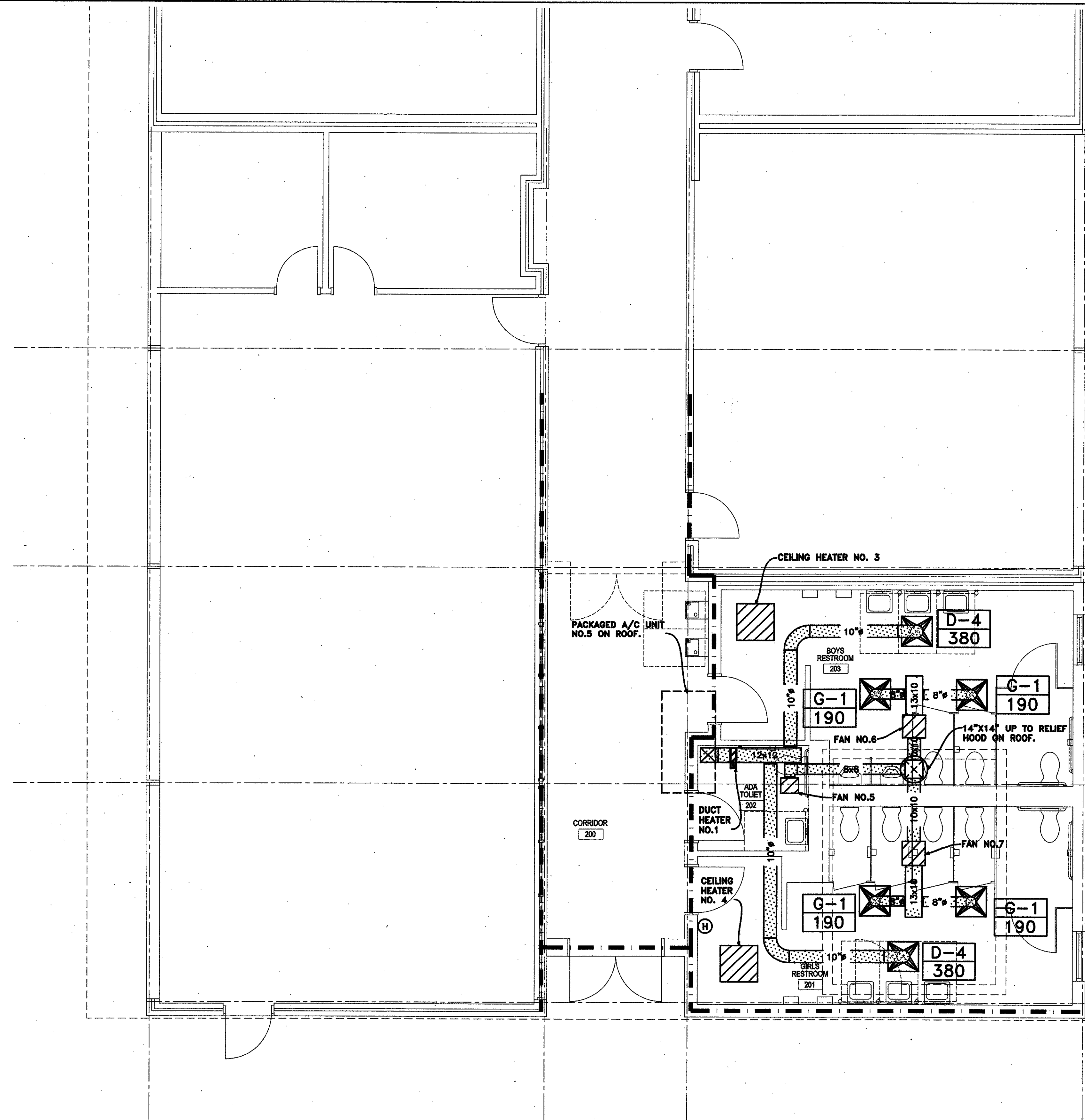


6/8/2009 11:30 AM HVAC FLOOR PLAN CLASSROOM WING B.DWG

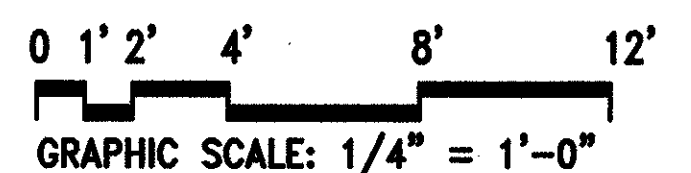


1 HVAC FLOOR PLAN CLASSROOM WING B

M2.02 1/4" = 1'-0"

ON 22" X 34" PAPER

NOTE: THE CONTRACTOR MAY SCALE THESE DRAWINGS. HOWEVER, THE CONTRACTOR SHALL BE RESPONSIBLE FOR VERIFICATION OF ALL DIMENSIONS, PLAN SCALE, AND SITE CONDITIONS BEFORE BIDDING AND DURING CONSTRUCTION.



MECHANICAL GENERAL NOTES:

- MECHANICAL CONTRACTOR SHALL BE RESPONSIBLE FOR COORDINATING THE ROUTING OF ALL DUCTWORK WITH THE STRUCTURE AND OTHER TRADES AS CONDITIONS ALLOW.
- ALL RECTANGULAR DUCTWORK SHALL BE GALVANIZED STEEL WITH HARD CAST DUCT SEALER APPLIED TO ALL SEAMS AND JOINTS. FLEX DUCT SHALL BE LIMITED TO 5 FOOT RUNS AND SHALL BE THERMAFLEX MKC OR FLEXMASTER 4M. PROVIDE HARD ELBOWS AT ALL TURNS. ALL ROUND SHEET METAL DUCTS SHALL BE "JOVAL" ROUND DUCT WITH SNAP LOCK SEAMS.
- INSTALL AT EACH DUCT TAKEOFF AN ADJUSTABLE VOLUME DAMPER IN AN ACCESSIBLE LOCATION.
- PROVIDE METAL STRAP HANGERS FOR ALL DUCTWORK AT MAXIMUM 8 FT. INTERVALS.
- CONTRACTOR SHALL COORDINATE SPACE REQUIREMENTS AND SERVICE CLEARANCES FOR ALL EQUIPMENT PRIOR TO SUBMITTING SHOP DRAWINGS.
- THERMOSTAT SHALL BE ELECTRONIC PROGRAMMABLE "THERM-I-DISTAT" TYPE WITH ON/AUTO/OFF SELECTOR SWITCH AND BATTERY BACK UP. THERMOSTATS SHALL HAVE TEMPERATURE AND HUMIDITY CONTROL FEATURES.
- COORDINATE THE EXACT PLACEMENT OF ALL CEILING MOUNTED DIFFUSERS AND GRILLES WITH THE CEILING GRID AND THE LIGHTS.
- EXTEND CONDENSATE DRAIN PAN LINES TO DRAIN IN MECHANICAL ROOM.
- GENERAL CONTRACTOR SHALL PROCURE THE SERVICES OF AN INDEPENDENT AABC, TABB OR NEBB CERTIFIED TEST AND BALANCE AGENCY. TAB AGENCY SHALL PERFORM AN INITIAL SMOKE/PRESSURE LEAK TEST ON ALL DUCTWORK ONCE ALL SHEETMETAL DUCTWORK HAS BEEN INSTALLED. A FINAL BALANCE REPORT OF ALL HVAC SYSTEMS (INCLUDING SUPPLY/ RETURN TRAVERSES) AND EXHAUST FANS SHALL BE PROVIDED TO ARCHITECT/ ENGINEER UPON COMPLETION OF PROJECT. ALL REPORTS SHALL MEET AABC/NEBB STANDARDS.
- REFRIGERANT LINES SHALL RISE UP IN EXTERIOR WALL TO ABOVE CEILING. RUN IN ATTIC TO RESPECTIVE AIR HANDLERS. COAT EXTERIOR LINES EXPOSED TO WEATHER WITH 2 COATS OF BLACK MASTIC.
- PROVIDE UL LISTED FIRE DAMPERS IN ALL DUCTS PENETRATING RATED WALLS, CEILINGS AND FLOOR ASSEMBLES. REFER TO ARCHITECTURAL PLANS FOR RATED WALLS.
- ALL DOORS MARKED (UC) SHALL BE UNDERCUT 3/4" FOR RETURN AIR.
- SUPPLIERS IN COOPERATION WITH MECHANICAL AND GENERAL CONTRACTOR SHALL PREPARE COMPLETE INSTALLATION SHOP DRAWINGS IN ADDITION TO CATALOG SUBMITTED SHOP DRAWINGS.
- ALL REFRIGERANT LINES SHALL BE SIZED BY THE EQUIPMENT MANUFACTURER FOR THE INSTALLATION CONDITIONS TO OPTIMIZE THE CAPACITY AND EFFICIENCY OF THE UNIT.

RCE PROJECT NO. 28329
 RITTER CONSULTING ENGINEERS, LTD.
 3009 9th STREET
 METairie, LOUISIANA 70002
 220 RIDGEMAN DRIVE SUITE C-3
 LAfayETTE, LOUISIANA 70503

USE AND INTERPRETATION OF THIS DRAWING

1. GENERAL CONDITIONS OF THE CONTRACT FOR CONSTRUCTION, ARTICLE 1 AND DOCUMENTS ATTACHED PART OF THE CONTRACT DOCUMENTS AND SPECIFICATIONS, AND INTENT OF THIS DRAWING, THE CONTRACT DOCUMENTS INCLUDE NOT ONLY THE DRAWINGS, BUT ALSO THE OWNER-CONTRACTOR AGREEMENT, CONDITIONS OF THE CONTRACT, THE SPECIFICATIONS, ADDENDA, AND MODIFICATIONS ISSUED AFTER EXECUTION OF THE CONTRACT. THESE CONTRACT DOCUMENTS ARE COMPLEMENTARY, AND WHAT IS REQUIRED BY ANYONE SHALL BE AS SHOWN UNLESS OTHERWISE SPECIFIED BY ALL WORK NOT COMPLETELY DELINEATED HEREON SHALL BE CONSTRUCTED OF THE SAME MATERIALS AND DETAIL AS SHOWN UNLESS SHOWN MORE COMPLETELY ELSEWHERE IN THE CONTRACT DOCUMENTS.

2. BY USE OF THE DRAWINGS FOR CONSTRUCTION OF THE PROJECT, THE OWNER REPRESENTS THAT HE HAS REVIEWED AND APPROVED THE DRAWINGS, AND THAT THE CONSTRUCTION DOCUMENTS ARE COMPLETE. THE CONTRACTOR REPRESENTS THAT HE HAS VISITED THE SITE, FAMILIARIZED HIMSELF WITH THE LOCAL CONDITIONS, VERIFIED FIELD DIMENSIONS AND CORRELATED HIS OBSERVATIONS WITH REQUIREMENTS OF THE CONTRACT DOCUMENTS.

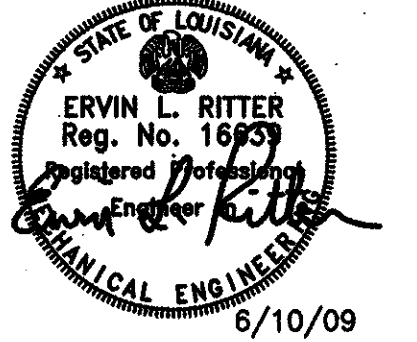
3. THE CONTRACT SUM AND CONTRACT TIME MAY BE CHANGED ONLY BY CHANGE ORDER TO THE CONTRACTOR ISSUED BY THE OWNER AND THE ARCHITECT. ANY WORK PERFORMED IN VARIANCE WITH THE CONTRACT DOCUMENTS AND NOT COVERED BY THE ARCHITECT'S WRITTEN ORDER FOR A WORK CHANGE OR THE WORK OR A CHANGE ORDER, WILL NOT BE ACCEPTED.

4. AS INSTRUMENTS OF SERVICE, ALL DRAWINGS, SPECIFICATIONS AND COPIES THEREOF FURNISHED BY THE ARCHITECT ARE HIS PROPERTY. THEY ARE TO BE USED ONLY FOR THIS PROJECT AND ARE NOT TO BE USED ON ANY OTHER PROJECT. CHANGES TO THE DRAWINGS MAY ONLY BE MADE BY THE ARCHITECT. ANY SUBMISSION OR DISTRIBUTION WITHOUT THE EXPRESS WRITTEN CONSENT OF THE ARCHITECT MAY BE CONSIDERED AN VIOLATION OF THE ARCHITECT'S COPYRIGHT OR OTHER RESERVED RIGHTS.

REUSE OF THIS DRAWING IN ANY MANNER IS STRICTLY PROHIBITED WITHOUT THE WRITTEN APPROVAL OF RITTER CONSULTING ENGINEERS, LTD.



320 N. Carrollton Avenue, Suite 100
 New Orleans, Louisiana 70119
 t. 504.488.7739 f. 504.488.7743
 www.VergesRome.com
 © copyright 2009



RENOVATIONS AND ADDITION TO CLASSROOM BUILDINGS FOLSOM JR. HIGH SCHOOL BOARD
 ST. TAMMANY PARISH SCHOOL BOARD
 83065 HAY HOLLOW ROAD
 FOLSOM, LOUISIANA

DATE ISSUED: 10 JUNE 2009
 REVISED:
 REVISED:
 REVISED:
 REVISED:
 DRAWN BY: RTM
 CHECKED BY: ELR/JS
 PHASE:

CONSTRUCTION DOCUMENTS

08060

TITLE:
HVAC CLASSROOM WING B

SHEET:

M2.02