

**RENOVATIONS AND ADDITION
 TO CLASSROOM BUILDINGS
 FOLSOM JR. HIGH SCHOOL
 ST. TAMMANY PARISH SCHOOL BOARD**

FOLSOM, LOUISIANA
 83055 HAY HOLLOW ROAD

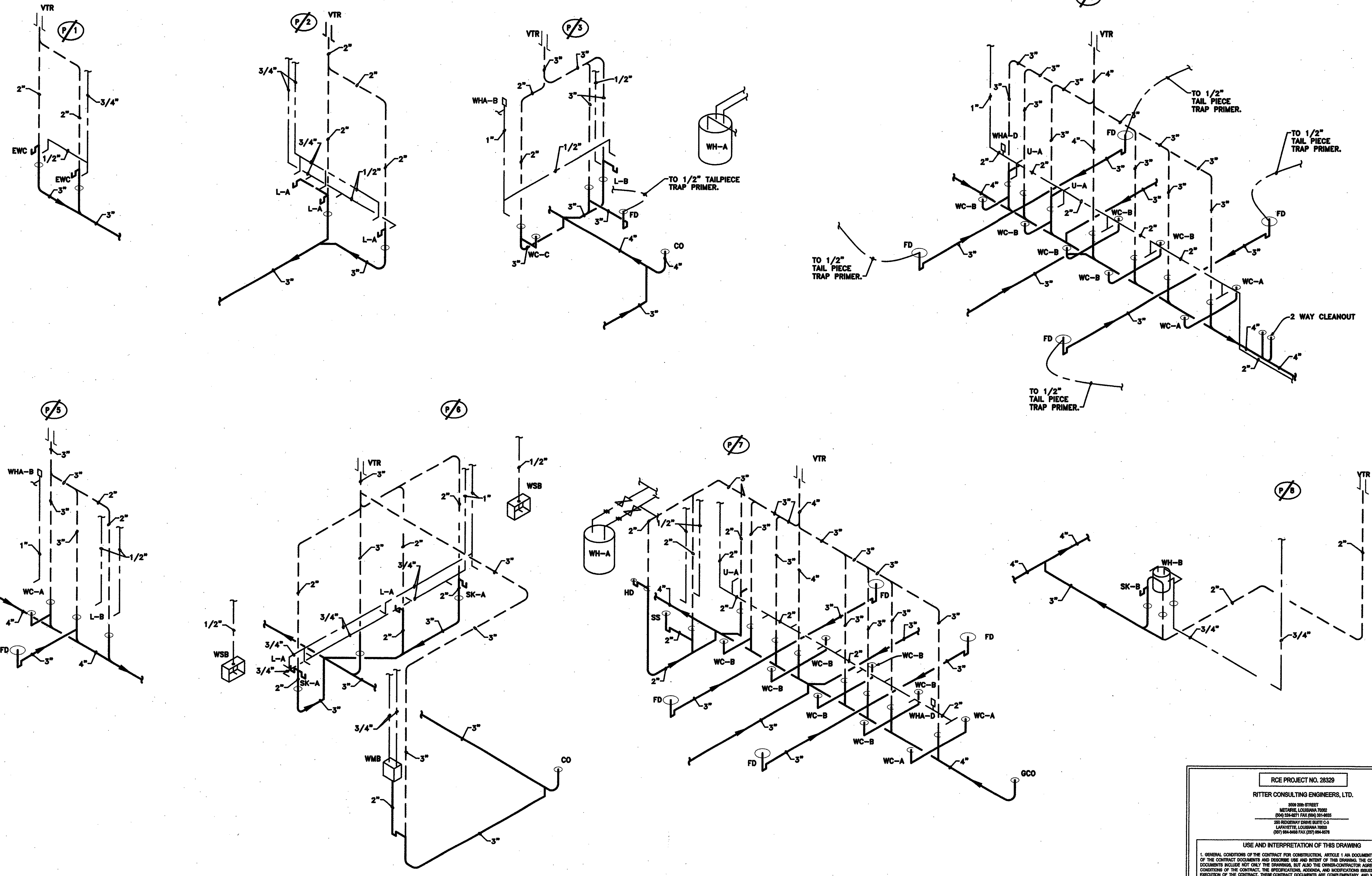
DATE ISSUED: 10 JUNE 2009
 REVISED:
 REVISED:
 REVISED:
 DRAWN BY: RTM
 CHECKED BY: ELRFJS
 PHASE:

CONSTRUCTION DOCUMENTS

08060

TITLE:
PLUMBING ISOS

SHEET:
M3.01



1 PLUMBING ISOS
 M3.01 NO SCALE

RCE PROJECT NO. 28329
 RITTER CONSULTING ENGINEERS, LTD.
 3009 9th STREET
 METairie, LOUISIANA 70002
 200 S. MARY STREET
 200 RIDGEWAY DRIVE SUITE C-3
 LAFAYETTE, LOUISIANA 70503
 (504) 884-4444 FAX (504) 884-4478

USE AND INTERPRETATION OF THIS DRAWING

1. GENERAL CONDITIONS OF THE CONTRACT FOR CONSTRUCTION, ARTICLE I (AN DOCUMENT ADD) ARE PART OF THE CONTRACT DOCUMENTS AND RESERVE USE AND INTERPRETATION OF THE CONTRACT DOCUMENTS INCLUDE NOT ONLY THE DRAWINGS, BUT ALSO THE OWNER-CONTRACTOR AGREEMENT, CONDITIONS OF THE CONTRACT, THE SPECIFICATIONS, ADDENDUMS AND MODIFICATIONS ISSUED AFTER EXECUTION OF THE CONTRACT. THESE CONTRACT DOCUMENTS ARE COMPLEMENTARY, AND WHAT IS REQUIRED BY ANY OF THEM SHALL BE AS INDICATED AND REQUIRED BY ALL. WORK NOT COMPLETELY DELINEATED HEREIN SHALL BE CONSTRUCTED OF THE SAME MATERIALS AND DETAIL SIMILARLY AS WORK SHOWN MORE COMPLETELY ELSEWHERE IN THE CONTRACT DOCUMENTS.
2. BY USE OF THE DRAWINGS FOR CONSTRUCTION OF THE PROJECT, THE OWNER REPRESENTS THAT HE HAS REVIEWED AND APPROVED THE DRAWINGS, AND THAT THE CONSTRUCTION DOCUMENT PHASE OF THE PROJECT IS COMPLETE. THE CONTRACTOR REPRESENTS THAT HE HAS VISITED THE SITE, FAMILIARIZED HIMSELF WITH THE LOCAL CONDITIONS, VISITED FIELD DRAWINGS AND CORRELATED HIS OBSERVATIONS WITH REQUIREMENTS OF THE CONTRACT DOCUMENTS.
3. THE CONTRACT SUM AND CONTRACT TIME MAY BE CHANGED ONLY BY CHANGE ORDER TO THE CONTRACTOR ISSUED BY THE OWNER AND THE ARCHITECT. ANY WORK PERFORMED IN VIOLATION WITH THE CONTRACT DOCUMENTS AND NOT COVERED BY THE ARCHITECT'S WRITTEN ORDER FOR A MINOR CHANGE IN THE WORK OR A CHANGE ORDER, WILL NOT BE ACCEPTED.
4. AS INSTRUMENTS OF SERVICE, ALL DRAWINGS, SPECIFICATIONS AND COPIES THEREOF FURNISHED BY THE ARCHITECT ARE HIS PROPERTY. THEY ARE TO BE USED ONLY FOR THIS PROJECT AND ARE NOT TO BE USED ON ANY OTHER PROJECT. CHANGES TO THE DRAWINGS MAY ONLY BE MADE BY THE ARCHITECT. ANY SUBSTITUTION OR DISTRIBUTION WITHOUT THE EXPRESS WRITTEN CONSENT OF THE ARCHITECT MAY BE CONSIDERED AS DEROGATION OF THE ARCHITECT'S COPYRIGHT OR OTHER RESERVED RIGHTS.

REUSE OF THIS DRAWING IN ANY MANNER IS STRICTLY PROHIBITED WITHOUT THE WRITTEN APPROVAL OF RITTER CONSULTING ENGINEERS, LTD.