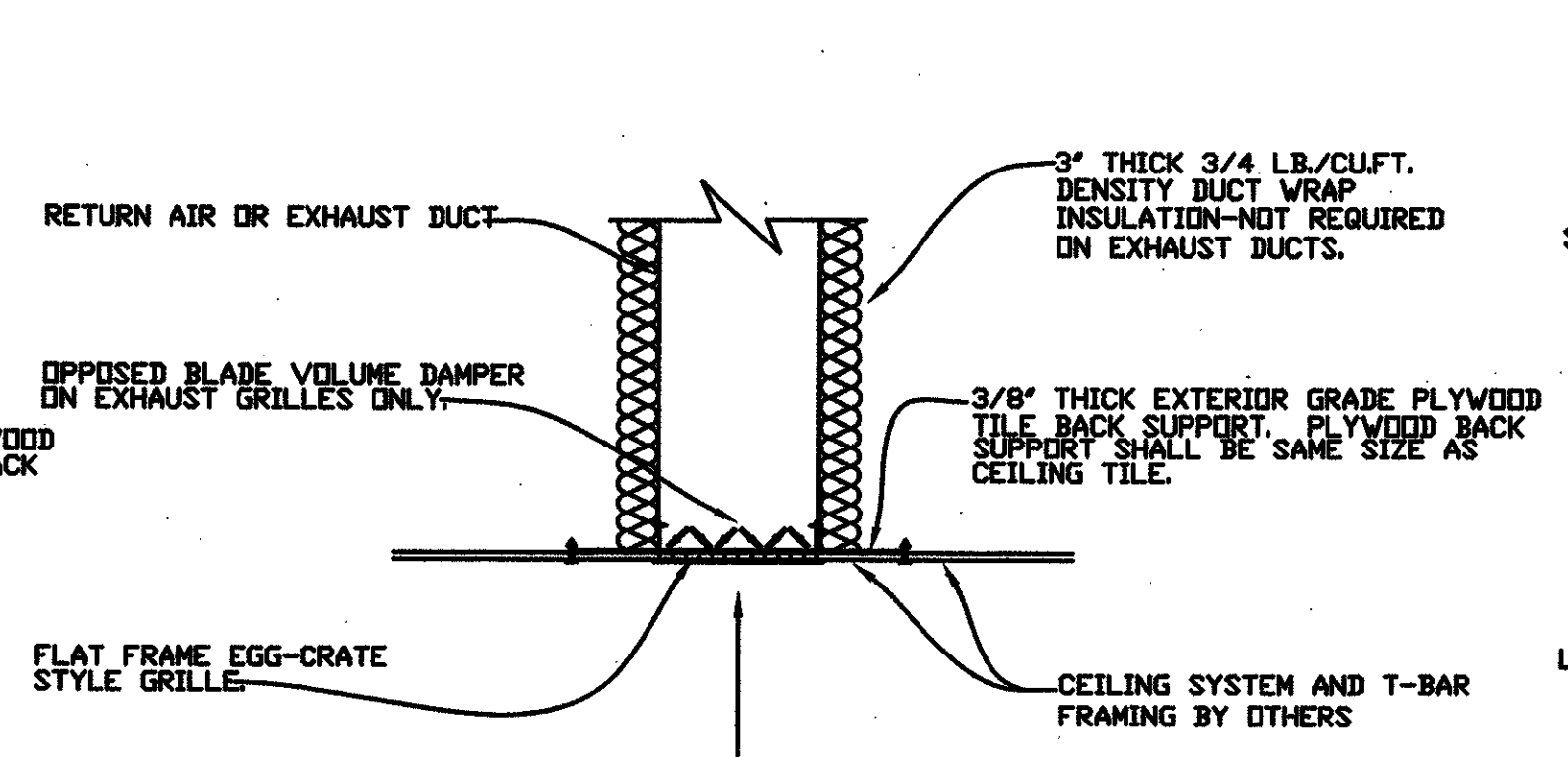


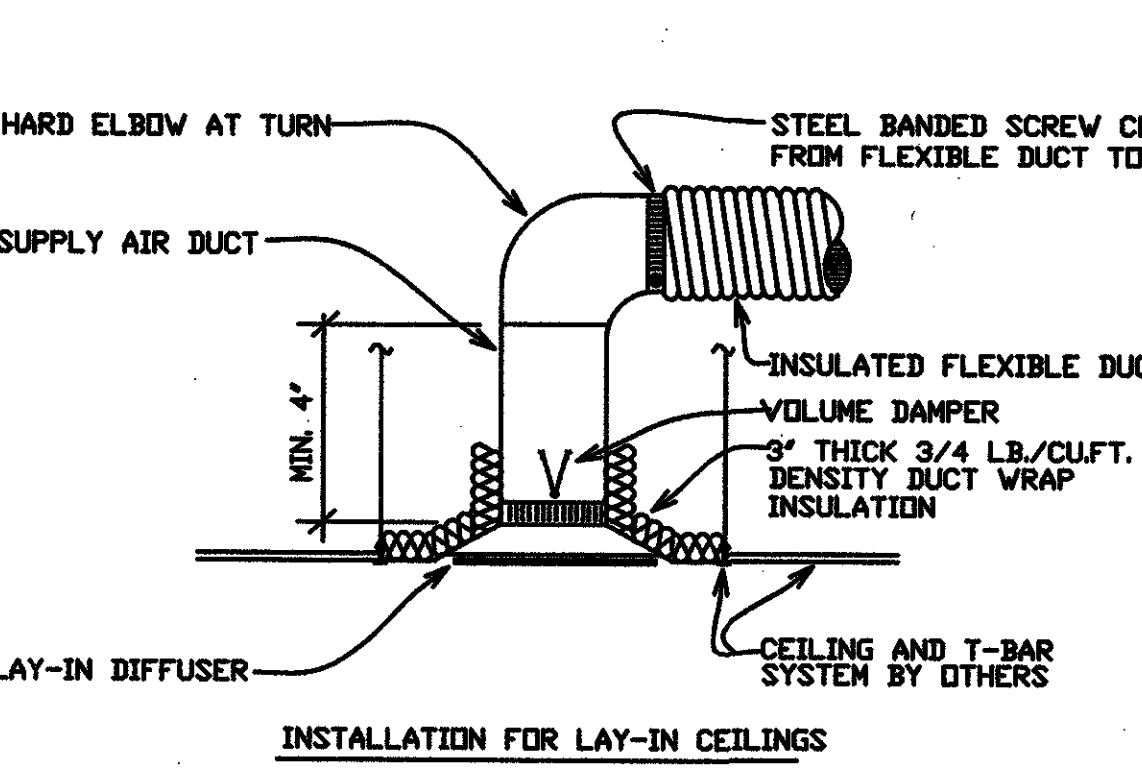
CEILING GRILLE INSTALLATION FOR LAY-IN CEILINGS



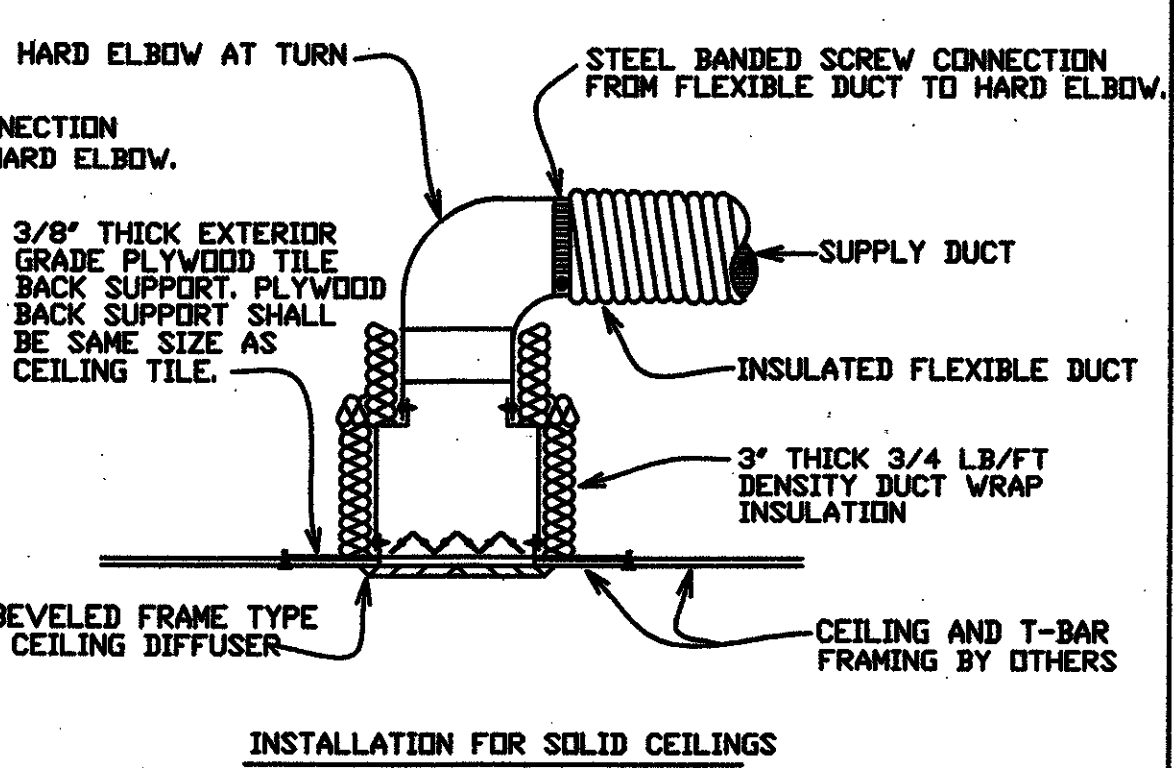
CEILING GRILLE INSTALLATION FOR SOLID CEILINGS

NOTE: ALL CEILING GRILLES SHALL BE MOUNTED TIGHT TO THE CEILING AND BE FURNISHED WITH SUITABLE FRAMES FOR SOLID CEILINGS.

1 CEILING GRILLE INSTALLATION DETAIL
M3.03 NO SCALE



INSTALLATION FOR LAY-IN CEILINGS



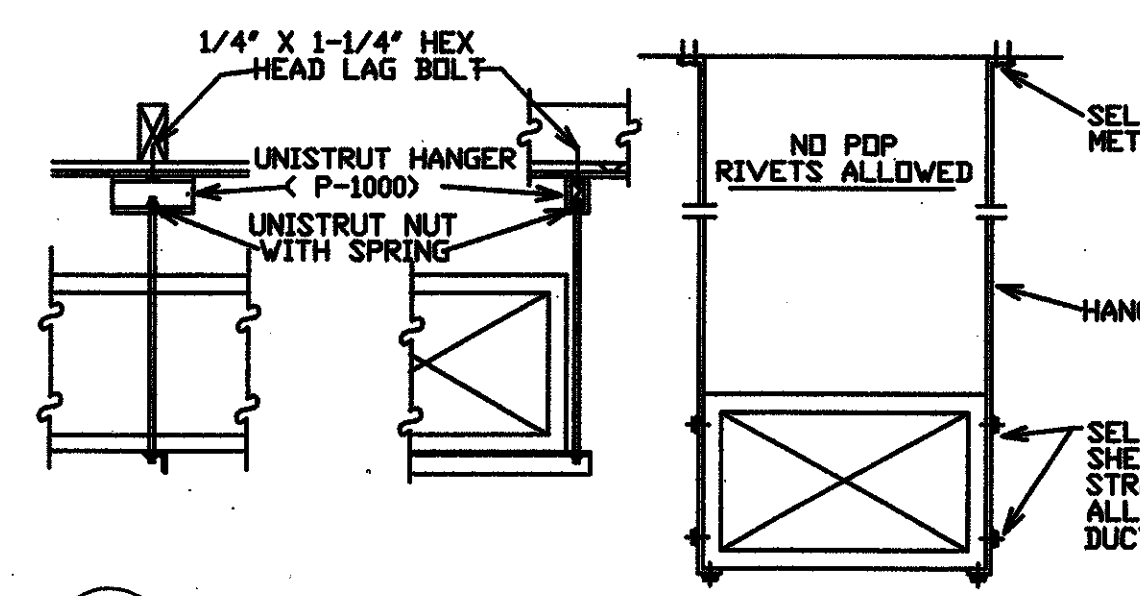
INSTALLATION FOR SOLID CEILINGS

NOTE: ALL OUTLETS SHALL BE MOUNTED TIGHT TO THE CEILING AND SHALL BE FURNISHED WITH A SUITABLE FRAME FOR THE TYPE OF CEILING USED.

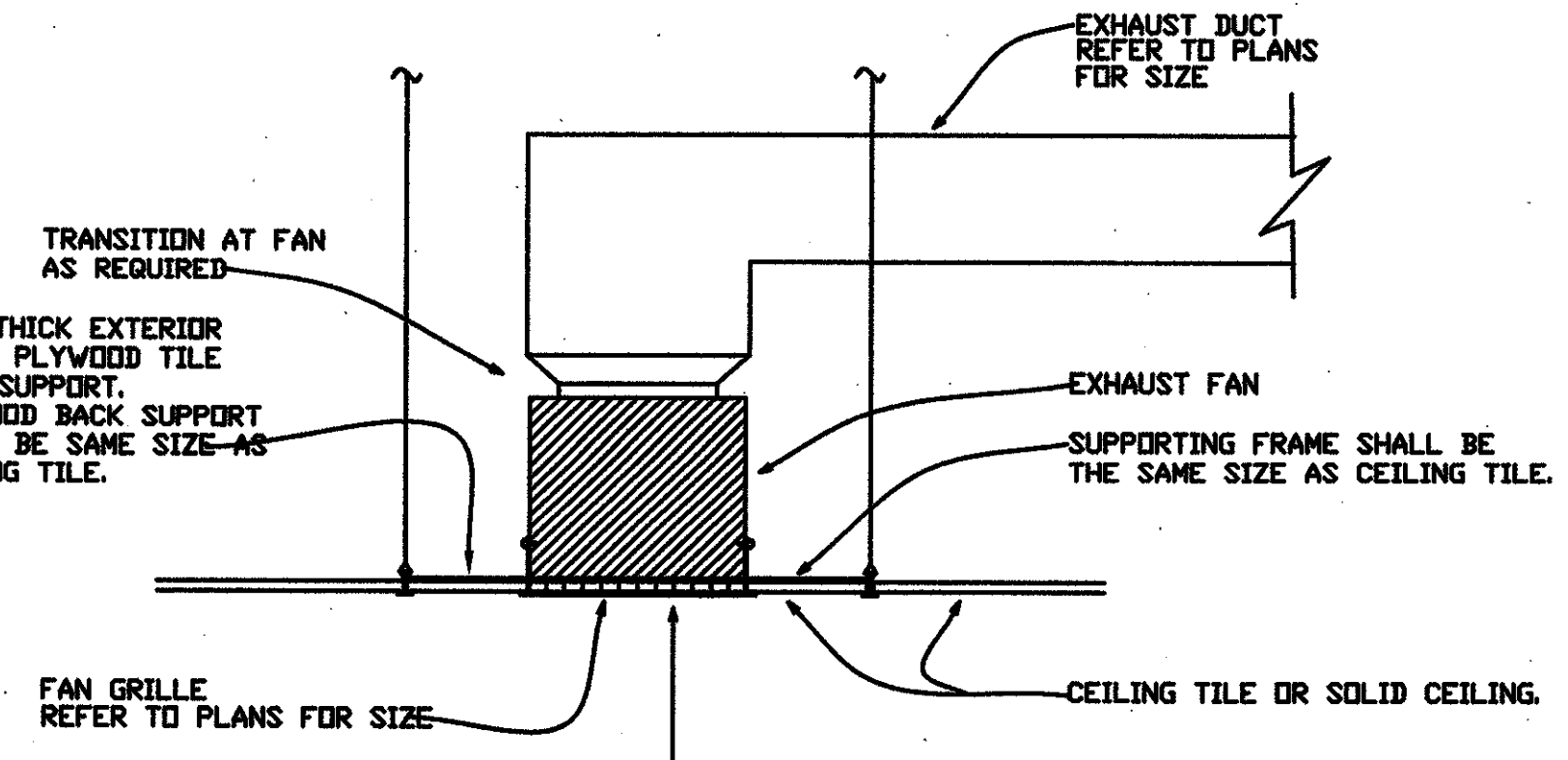
2 SUPPLY AIR DIFFUSER DETAIL
M3.03 NO SCALE

HANGER SIZES FOR RECTANGULAR DUCT

MAX. SIDE	HANGER	HORIZONTAL SUPPORT ANGLE	MAXIMUM SPACING
30"	1"x1/8" GAGE STRAP	NONE REQUIRED	10'-0"
36"	1/4" ROUND ROD	1-1/2"x1-1/2"x1/8"	8'-0"
48"	1/4" ROUND ROD	2" X 2" X 1/8"	8'-0"
60"	5/16" ROUND ROD	2" X 2" X 1/8"	8'-0"
84"	3/8" ROUND ROD	2" X 2" X 1/8"	8'-0"



3 DUCT STRAP HANGER DETAIL
M3.03 NO SCALE



4 CEILING MOUNTED FAN DETAIL
M3.03 NO SCALE

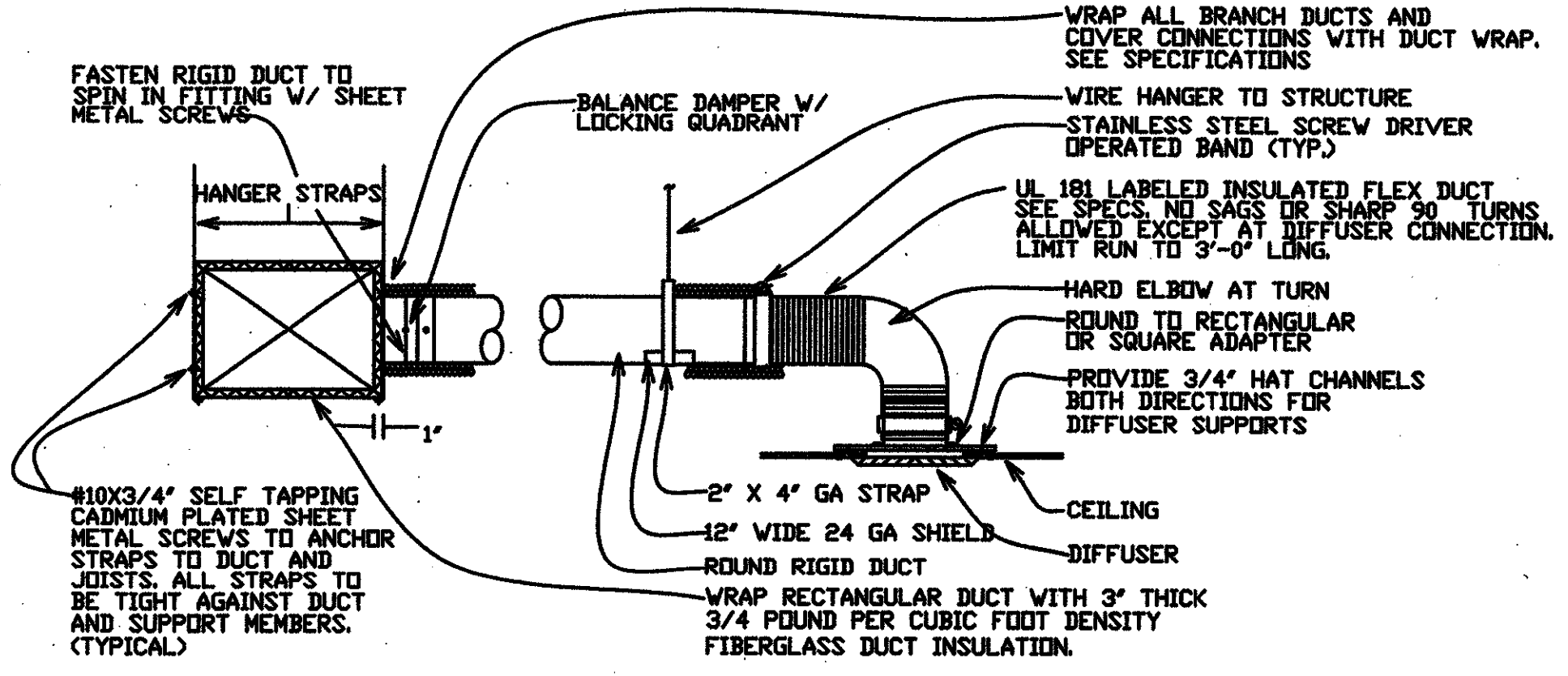
TRANSVERSE REINFORCING

DIMENSION OF LONGEST SIDE (IN INCHES)	SHEET METAL GAGE (ALL FOUR SIDES)	AT JOINTS											
		DRIVE SLIP		PLAIN S SLIP		HEMMED S SLIP		ALTERN. BAR SLIP		REIN-FORCED BAR SLIP			
		RECOM. HEMMED GAGE	RECOM. HEMMED ANGLE SIZE	RECOM. HEMMED GAGE	RECOM. HEMMED ANGLE SIZE	RECOM. HEMMED GAGE	RECOM. HEMMED ANGLE SIZE	RECOM. HEMMED GAGE	RECOM. HEMMED ANGLE SIZE	RECOM. HEMMED GAGE	RECOM. HEMMED ANGLE SIZE		
UP THRU 12	26	NONE REQ.	1	26	26	24	24	24	24	NDT REQ.	NDT REQ.	24	NDT REQ.
13 - 18	24	NONE REQ.	1	24	24	24	24	24	24	NDT REQ.	NDT REQ.	24	NDT REQ.
19 - 30	24	1x1x1/8@60°	1	—	24	24	24	24	24	NDT REQ.	NDT REQ.	24	NDT REQ.
31 - 42	22	1x1x1/8@60°	1	—	—	22	22	22	22	NDT REQ.	NDT REQ.	22	NDT REQ.
43 - 54	22	1x1x1/8@60°	1 1/2	—	—	22	22	22	22	1x1x1/8	NDT REQ.	22	NDT REQ.
55 - 60	20	1x1x1/8@60°	1 1/2	—	—	—	22	22	22	1x1x1/8	NDT REQ.	22	NDT REQ.
61 - 84	20	1x1x1/8@30°	1 1/2	—	—	—	22	22	22	1x1x1/8	NDT REQ.	22	NDT REQ.

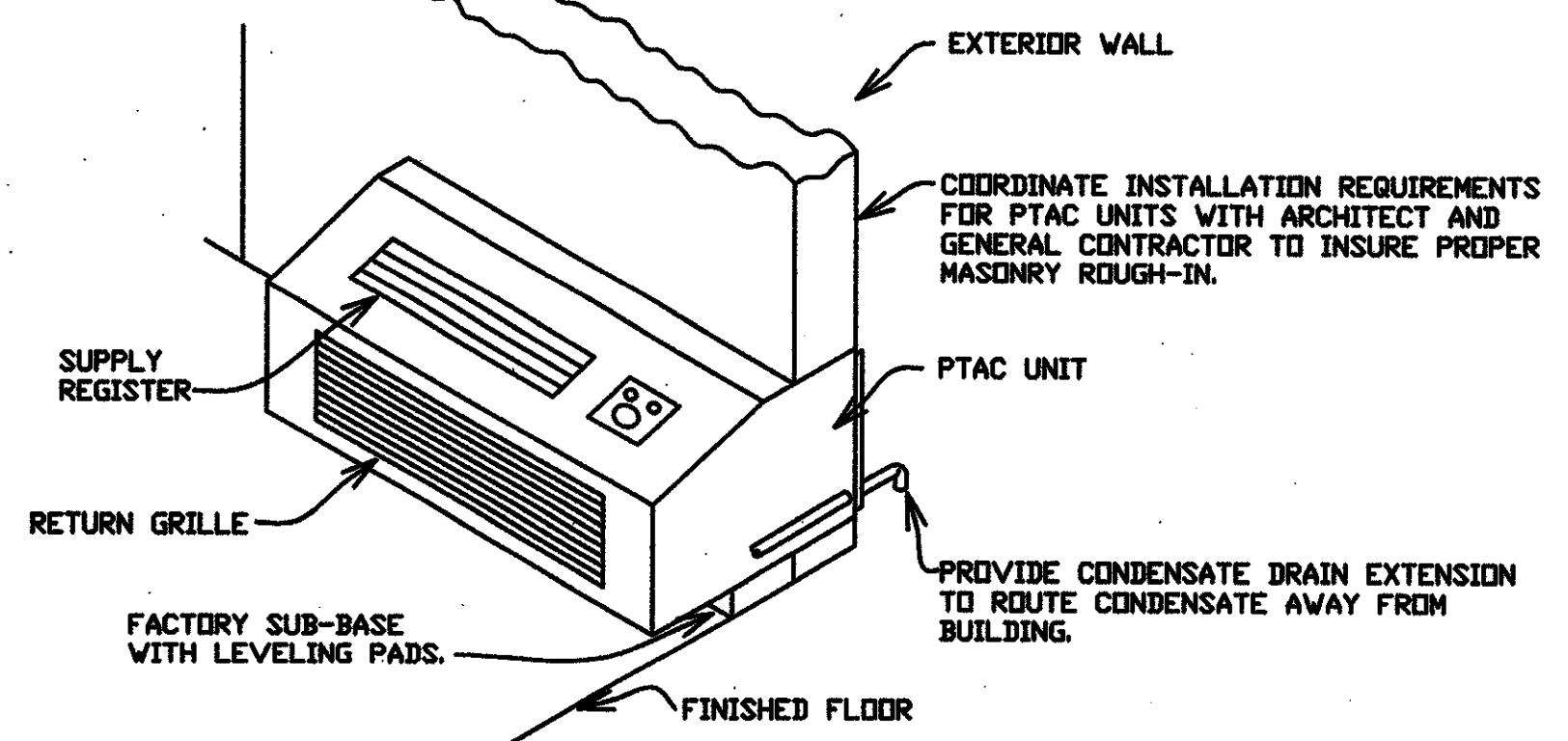
TRANSVERSE REINFORCING SIZE IS DETERMINED BY DIMENSION OF SIDE TO WHICH ANGLE IS APPLIED.

5 DUCT CONSTRUCTION DETAIL
M3.03 NO SCALE

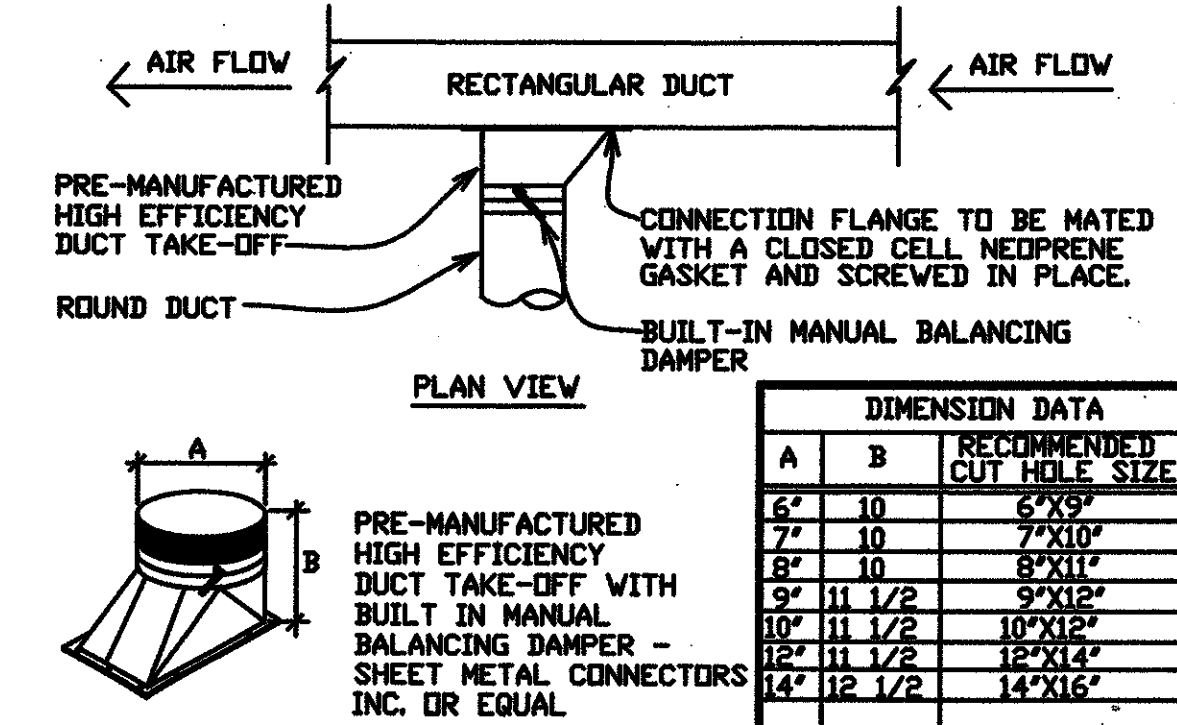
NOTES:
1. IN AREAS WHERE FIRE DAMPERS ARE REQUIRED PROVIDE DEEP ROUND TO RECTANGULAR OR SQUARE ADAPTER AND BUILD GYPSUM BOARD ENCLOSURE.
2. NO POP RIVETS ALLOWED.
3. PROVIDE SUPPORT ON ALL BRANCH DUCT RUNOUTS. MINIMUM TWO SUPPORTS ON BRANCH DUCTS OVER 6'-0" IN LENGTH.
4. DO NOT LINE DUCTWORK.



6 TYPICAL DIFFUSER CONNECTION DETAIL
M3.03 NO SCALE



7 TYPICAL PTAC INSTALLATION DETAIL
M3.03 NO SCALE



8 HIGH EFFICIENCY BRANCH DUCT TAKEOFF DETAIL
M3.03 NO SCALE

DIMENSION DATA

A	B	RECOMMENDED CUT HOLE SIZE
6"	10"	6"x9"
7"	10"	7"x10"
8"	10"	8"x11"
9"	11 1/2"	9"x12"
10"	11 1/2"	10"x12"
12"	11 1/2"	12"x14"
14"	12 1/2"	14"x16"

RCE PROJECT NO. 28329
RITTER CONSULTING ENGINEERS, LTD.
3009 29th STREET
NEWORLEANS, LOUISIANA 70002
(504) 284-8271 FAX (504) 284-8858
289 HENRIEVILLE DRIVE SUITE C-3
LA FAYETTE, LOUISIANA 70503
(507) 684-6468 FAX (507) 684-8570

USE AND INTERPRETATION OF THIS DRAWING

- GENERAL CONDITIONS OF THE CONTRACT FOR CONSTRUCTION, ARTICLE 1 AND DOCUMENT ADDENDUM ARE PART OF THE CONTRACT DOCUMENTS AND DESCRIBE USE AND INTENT OF THIS DRAWING. THE CONTRACT DOCUMENTS INCLUDE, BUT NOT BE LIMITED TO, THE DRAWINGS, SPECIFICATIONS, AND ADDENDUM. ANY CHANGES TO THE CONTRACT DOCUMENTS SHALL BE MADE BY THE ARCHITECT. ANY CHANGES TO THE CONTRACT DOCUMENTS SHALL BE MADE BY THE ARCHITECT. ANY CHANGES TO THE CONTRACT DOCUMENTS SHALL BE MADE BY THE ARCHITECT.
- BY USE OF THE DRAWINGS FOR CONSTRUCTION OF THE PROJECT, THE OWNER REPRESENTS THAT HE HAS REVIEWED AND APPROVED THE DRAWINGS, AND THAT THE CONSTRUCTION DOCUMENT PHASE OF THE PROJECT IS COMPLETE. THE CONTRACTOR REPRESENTS THAT HE HAS WRITTEN THE SITE, FURNISHED HIMSELF WITH THE LOCAL CONDITIONS, VERIFIED FIELD DIMENSIONS AND CORRELATED HIS OBSERVATIONS WITH REQUIREMENTS OF THE CONTRACT DOCUMENTS.
- THE CONTRACTOR SHALL BE RESPONSIBLE FOR OBTAINING ALL NECESSARY PERMITS AND APPROVALS FROM THE LOCAL, STATE AND FEDERAL AGENCIES. ANY WORK PERFORMED IN VIOLATION OF THE CONTRACT DOCUMENTS AND NOT COVERED BY THE ARCHITECT'S WRITTEN ORDER FOR A MINOR CHANGE IN THE WORK OR A CHANGE ORDER, WILL NOT BE ACCEPTED.
- AS INSTRUMENTS OF SERVICE, ALL DRAWINGS, SPECIFICATIONS AND COPIES THEREOF FURNISHED BY THE ARCHITECT ARE HIS PROPERTY. THEY ARE TO BE USED ONLY FOR THIS PROJECT AND ARE NOT TO BE USED ON ANY OTHER PROJECT. CHANGES TO THE DRAWINGS MAY ONLY BE MADE BY THE ARCHITECT. ANY SUBMISSION OR DISTRIBUTION WITHOUT THE EXPRESS WRITTEN CONSENT OF THE ARCHITECT MAY BE CONSIDERED AS VIOLATION OF THE ARCHITECT'S COPYRIGHT OR OTHER RESERVED RIGHTS.

REUSE OF THIS DRAWING IN ANY MANNER IS STRICTLY PROHIBITED WITHOUT THE WRITTEN APPROVAL OF RITTER CONSULTING ENGINEERS, LTD.

VergesRome
Architects

320 N. Carrollton Avenue, Suite 100
New Orleans, Louisiana 70119
t. 504.488.7739 f. 504.488.7743
www.VergesRome.com
© copyright 2009

STATE OF LOUISIANA
ERVIN L. RITTER
Reg. No. 16933
Professional Engineer
MECHANICAL ENGINEER
6/10/09

RENOVATIONS AND ADDITION
TO CLASSROOM BUILDINGS
FOLSOM JR. HIGH SCHOOL
ST. TAMMANY PARISH SCHOOL BOARD
FOLSOM, LOUISIANA
83055 HAY HOLLOW ROAD

DATE ISSUED: 10 JUNE 2009
REVISED:
REVISED:
REVISED:
REVISED:
DRAWN BY: RTM
CHECKED BY: ELRFJS
PHASE:
CONSTRUCTION DOCUMENTS
08060
TITLE:
HVAC DETAILS
SHEET:
M3.03

6/9/2009 11:28 AM
HVAC DETAILS 2.DWG