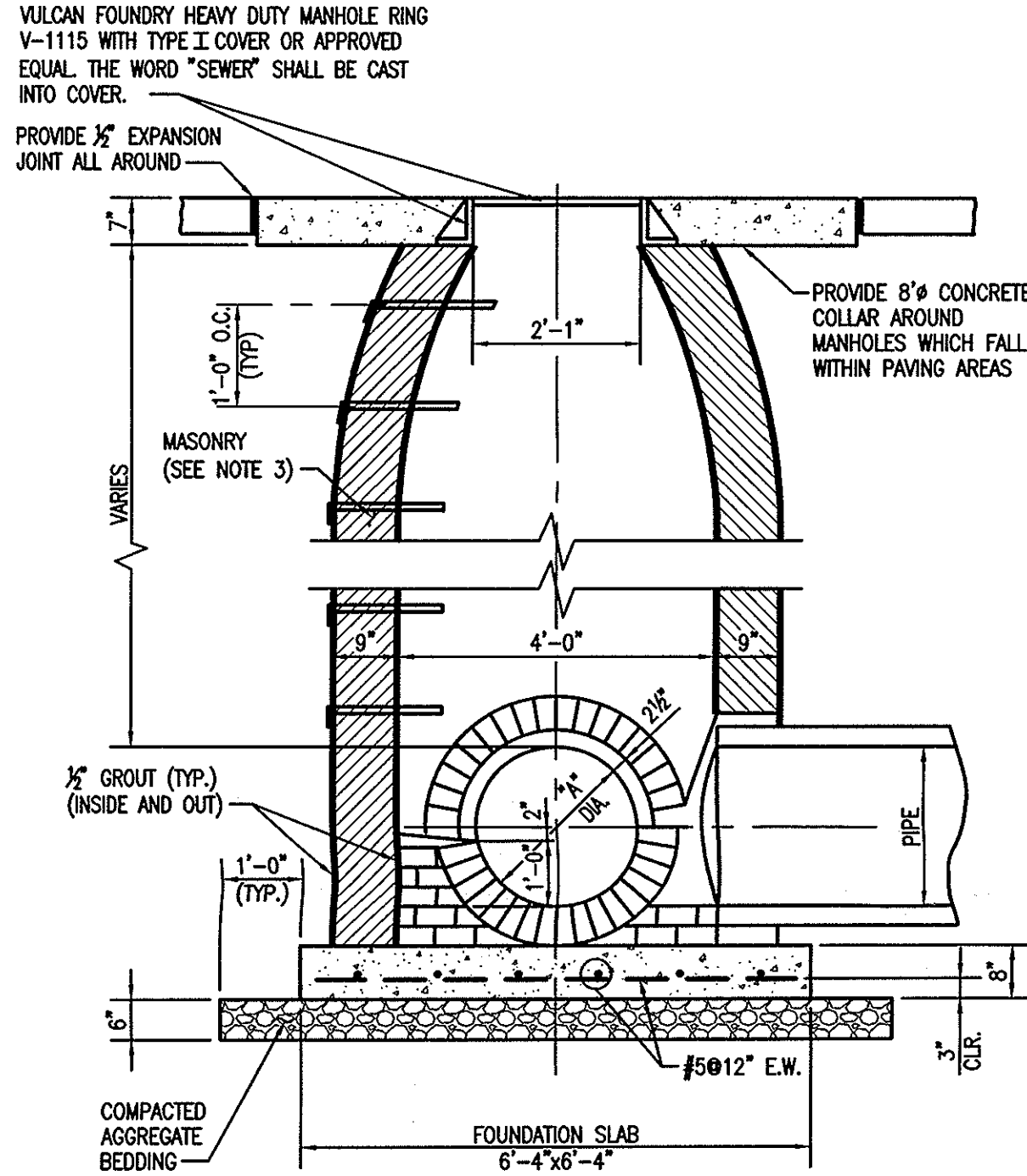
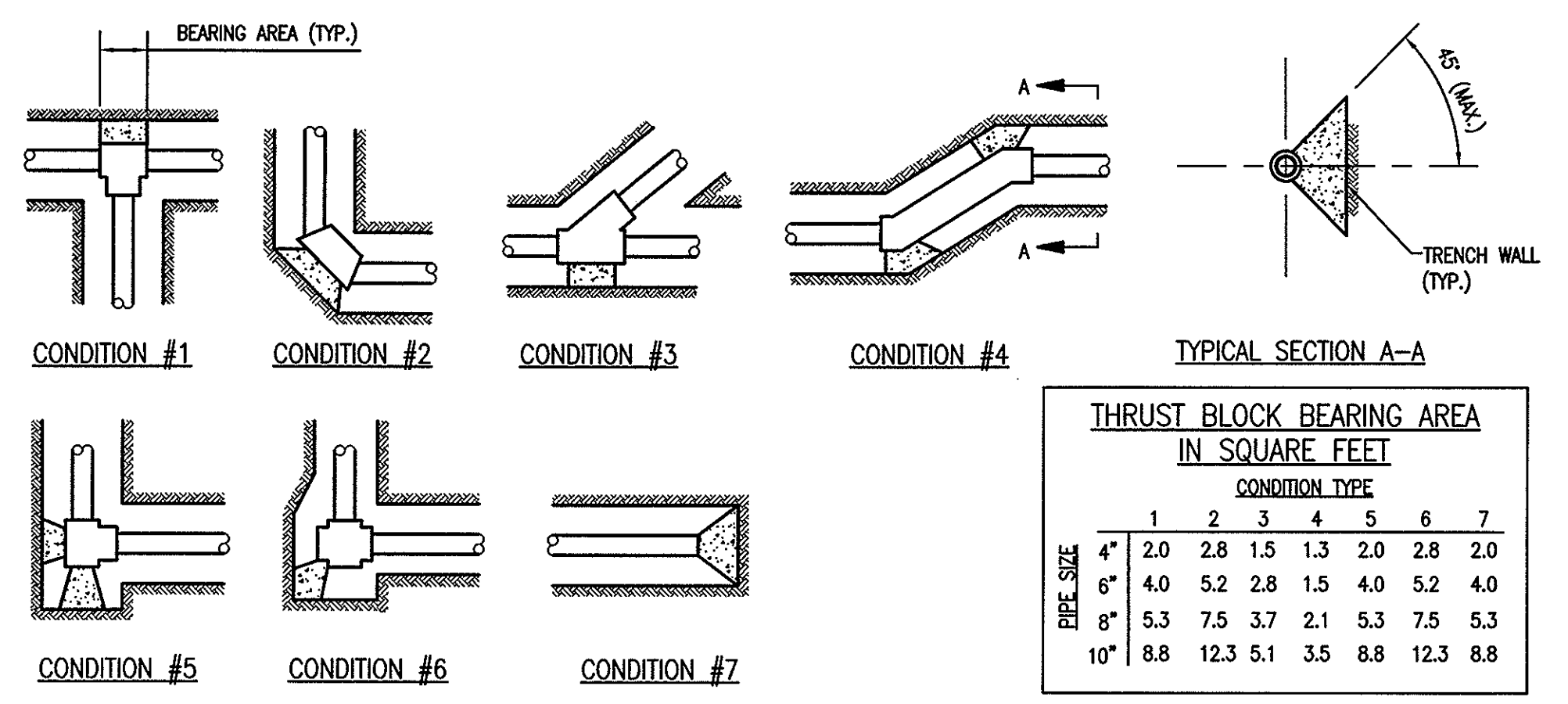


PLAN



SECTION 1 SANITARY SEWER MANHOLE DETAILS 1/2"=1'-0"

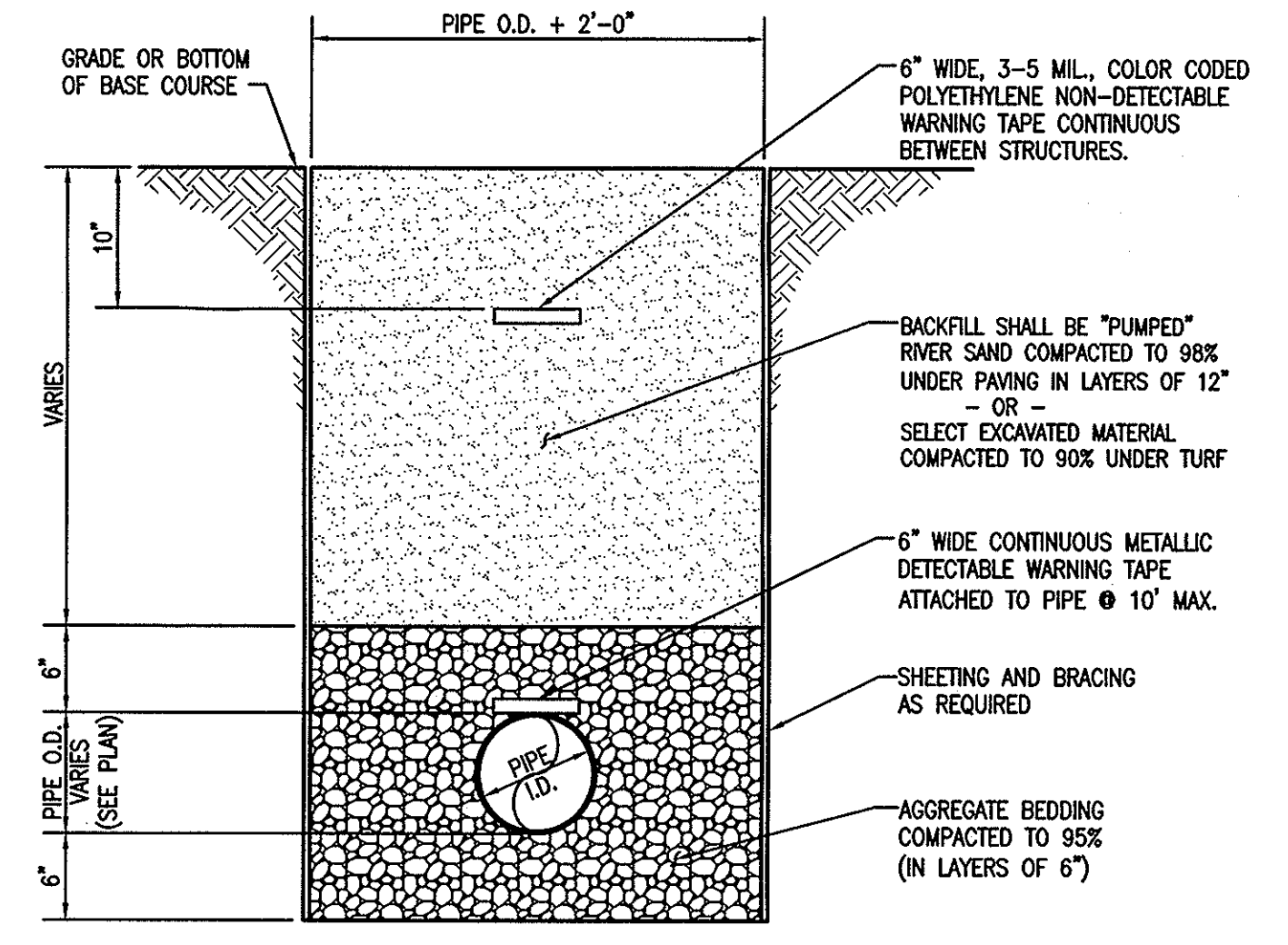
- ALL MASONRY TO BE LAID WITH RUNNING BOND AND HEADER COURSE EVERY FOURTH LAYER.
- ALL MASONRY WALLS TO BE PLASTERED INSIDE AND OUT (1/2" MINIMUM THICKNESS).
- CONTRACTOR MAY PROVIDE PRECAST CONCRETE IN LIEU OF MASONRY UTILITY STRUCTURES AS FOLLOWS:
 - PRECAST CONCRETE MANHOLES OUTSIDE OF THE CITY RIGHT-OF-WAY SHALL CONFORM TO ASTM C478.
 - PRECAST CONCRETE DROP INLETS SHALL CONFORM TO ASTM C913.
- CASTINGS:
 - MATERIAL: CAST IRON MATERIAL SHALL CONFORM TO ASTM A48-83 CLASS 30, AS A MINIMUM, WITH A MINIMUM OF 30,000 P.S.I. TENSILE STRENGTH, DUCTILE IRON MATERIAL SHALL CONFORM TO ASTM A536-80, GRADE 65-45-12.
 - APPEARANCE: ALL CASTINGS SHALL BE FURNISHED FREE FROM BLOWHOLES, SHRINKAGES OR OTHER SURFACE IMPERFECTIONS. ALL ROUND MANHOLE RINGS AND COVERS OR GRATES SHALL BE FURNISHED WITH MACHINED HORIZONTAL BEARING SURFACES. ALL OTHER CASTINGS WILL BE FURNISHED WITH GROUND SEATING SURFACES.
 - TOLERANCES: ACTUAL DIMENSIONS OF ALL CASTINGS SHALL HAVE A TOLERANCE OF ±1/16 INCH PER FOOT OF DIMENSION. ALL FRAMES, COVERS, AND GRATES OF THE SAME PART NUMBER SHALL BE INTERCHANGEABLE.
 - THE WORD "SEWER" SHALL BE CAST INTO COVER AS REQUIRED.



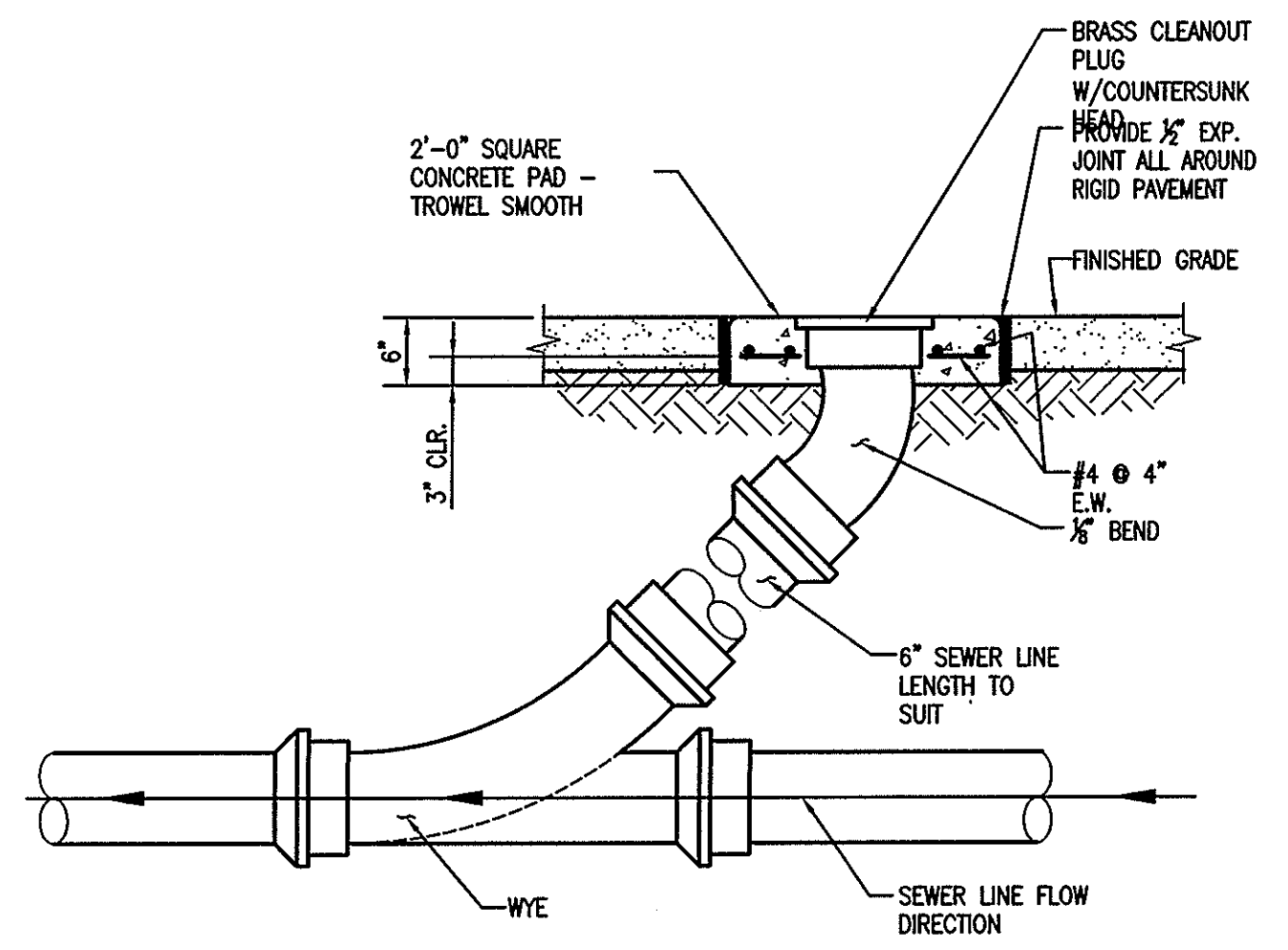
		THRUST BLOCK BEARING AREA IN SQUARE FEET						
		CONDITION TYPE						
PIPE SIZE		1	2	3	4	5	6	7
4"		2.0	2.8	1.5	1.3	2.0	2.8	2.0
6"		4.0	5.2	2.8	1.5	4.0	5.2	4.0
8"		5.3	7.5	3.7	2.1	5.3	7.5	5.3
10"		8.8	12.3	5.1	3.5	8.8	12.3	8.8

- NOTE:
- ALL THRUST BLOCK BEARING FACES SHALL BE POURED AGAINST UNDISTURBED SOIL OR APPROVED COMPACTED BACKFILL. USE PLASTIC FILM BETWEEN PIPE AND CONCRETE.
 - THRUST BLOCKS FOR TEES SHALL BE OF BRANCH SIZE.
 - THRUST BLOCK DETAILS DO NOT LIMIT THE SIZE OR LOCATION OF ADDITIONAL BLOCKING AS REQUIRED BY THE ENGINEER.
 - THRUST BLOCK BEARING AREA BASED ON 150 PSI & 1500 PSF SOIL PRESSURE.
 - ALL THRUST BLOCK SIDES SHALL BE FORMED.
 - CONCRETE FOR THRUST BLOCKS SHALL BE 3000 PSI MINIMUM.

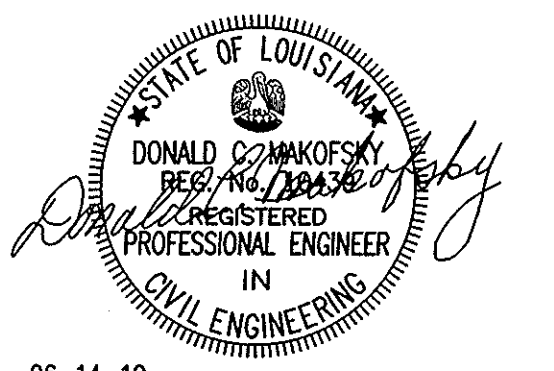
3 TYPICAL THRUST BLOCK DETAIL C.2.1 N.T.S.



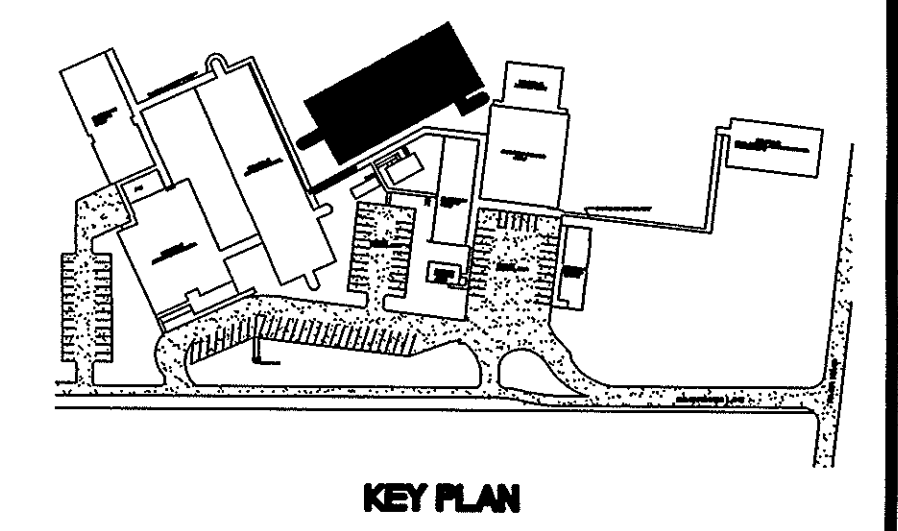
4 TYPICAL 6" SEWERAGE PIPE TRENCH AND BEDDING DETAIL 1"=1'-0"



2 SEWER CLEANOUT TO GRADE DETAIL 3/4"=1'-0"



06-14-10



no.	revisions	date
1		
2		
3		
4		
5		
6		

HARRY HURST MIDDLE SCHOOL WING ADDITION
170 Roadrunner Lane, Destrehan, Louisiana 70047

project number	1007	C.2.1
date	6.14.2010	
phase	CD	
drawing number		



CONTRACT DOCUMENTS ARE PROTECTED BY PATENT RIGHTS. ANY REPRODUCTION OR TRANSMISSION OF THESE DOCUMENTS WITHOUT THE WRITTEN PERMISSION OF MORPHY MAKOFSKY INCORPORATED IS PROHIBITED. THE PROJECT IDENTIFIED AND ARE NOT AVAILABLE FOR REUSE IN ANY OTHER PROJECT OR AT ANY OTHER LOCATION WITHOUT THE WRITTEN PERMISSION OF MORPHY MAKOFSKY INCORPORATED. ALL RIGHTS ARE RESERVED TO MORPHY MAKOFSKY ARCHITECTS.