

### GENERAL NOTES

- FOR DETAILED ROOM INFORMATION AND CABINET DETAILS REFER TO A.4.0 SHEETS.
- PROVIDE THREE DAY NOTICE PRIOR TO BEGINNING PILE DRIVING.
- ALL FIXTURES TO BE PROVIDED BY OWNER UNLESS OTHERWISE STATED IN THESE DOCUMENTS.

### SPECIFIC NOTES

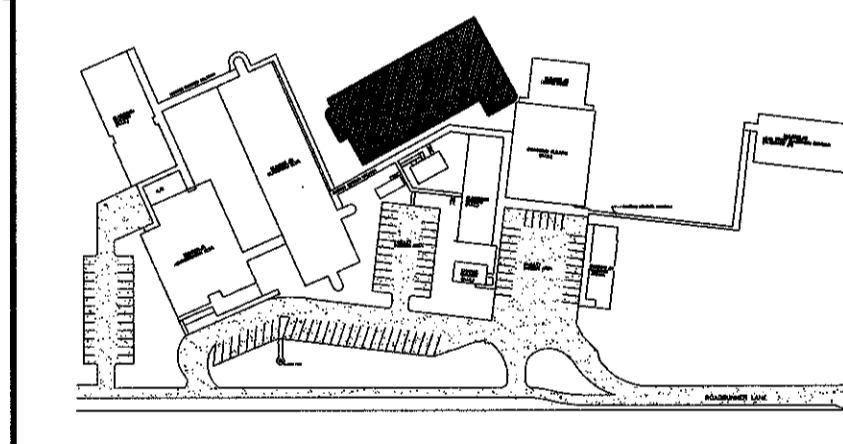
- EYE WASH STATION SEE MECHANICAL
- DRINKING FOUNTAIN SEE ELEVATION E-1/A.4.4
- FIRE EXTINGUISHER
- PROVIDE LAB TABLES AS PER SPECIFICATION
- PROVIDE FUME HOOD AS PER SPECIFICATION
- ALLOW ROOM FOR 6" FLANGE WITHIN MECHANICAL CHASE
- SAW CUT CONCRETE SCORE LINES

### AREA CALCULATIONS

FIRST FLOOR	18,641 SQ. FT.
SECOND FLOOR	18,508 SQ. FT.
MEZZANINE AREA	3,821 SQ. FT.
TOTAL AREA	40,970 SQ. FT.

### LEGEND

- 8" CMU WALL
- BRICK VENEER WALL



**MURRAY ARCHITECTS**  
 1315 North Center Street  
 Metairie, LA 70007  
 (504) 885-7275  
 fax (504) 725-0882

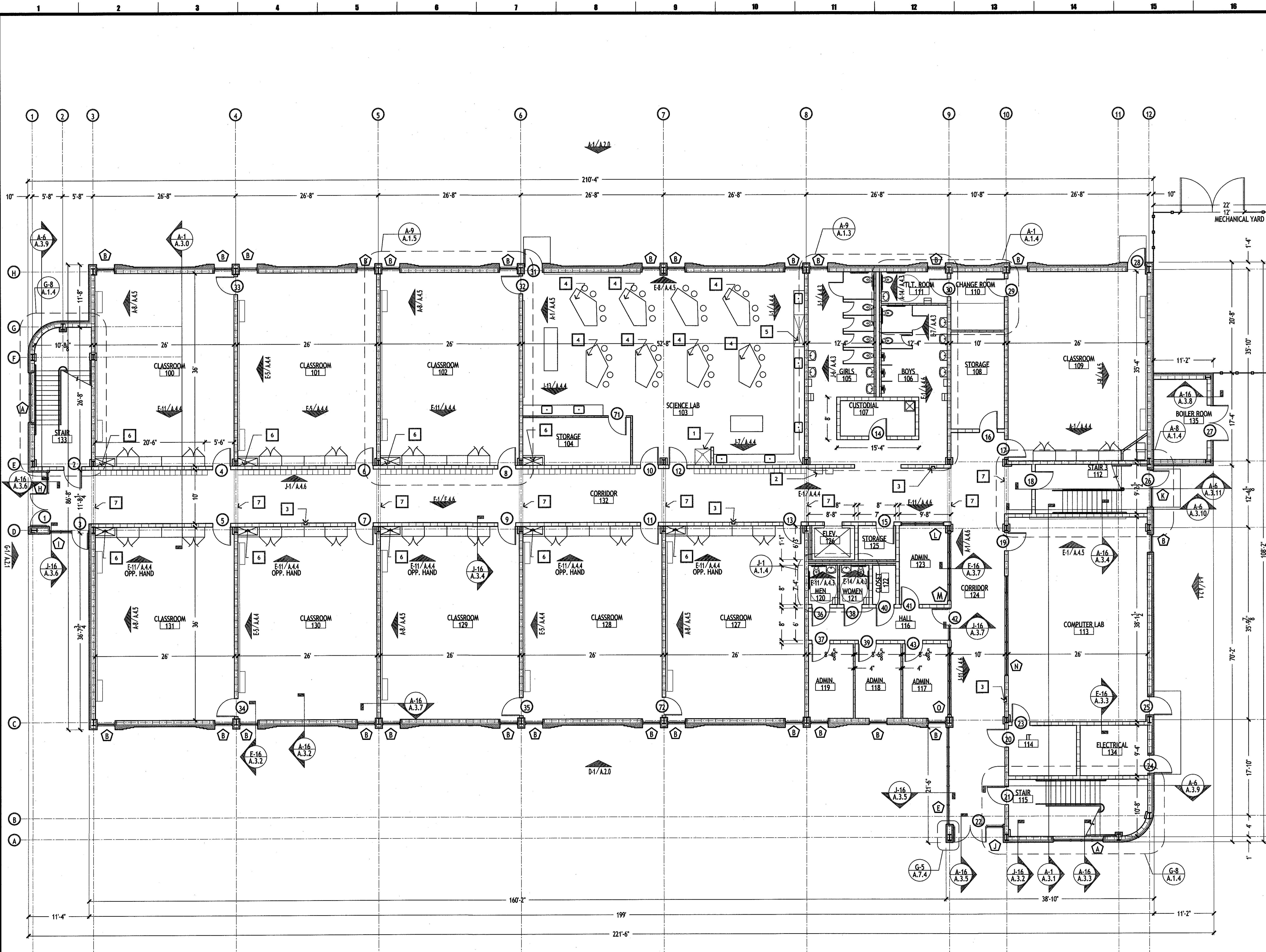
no.	revisions	date
1		
2		
3		
4		
5		
6		

### HARRY HURST MIDDLE SCHOOL WING ADDITION

170 Roadrunner Lane, Destrehan, Louisiana 70047

FIRST FLOOR PLAN

		drawing number project number 1007 date 6.14.2010 phase CD
--	--	---



**A-1 FIRST FLOOR PLAN**

1/8"=1'-0"

**A.1.0**

COPYRIGHT: THESE DOCUMENTS ARE PROTECTED BY UNITED STATES COPYRIGHT LAW. THEY HAVE BEEN PREPARED SPECIFICALLY FOR THE CLIENT AND ARE NOT TO BE REPRODUCED OR TRANSMITTED IN ANY FORM OR BY ANY MEANS, ELECTRONIC OR MECHANICAL, WITHOUT THE EXPRESS WRITTEN APPROVAL OF MURRAY ARCHITECTS. REPRODUCTION OF THESE DOCUMENTS WITHOUT THE WRITTEN APPROVAL OF MURRAY ARCHITECTS IS PROHIBITED BY THE ARCHITECT. ALL RIGHTS ARE RESERVED TO MURRAY ARCHITECTS.