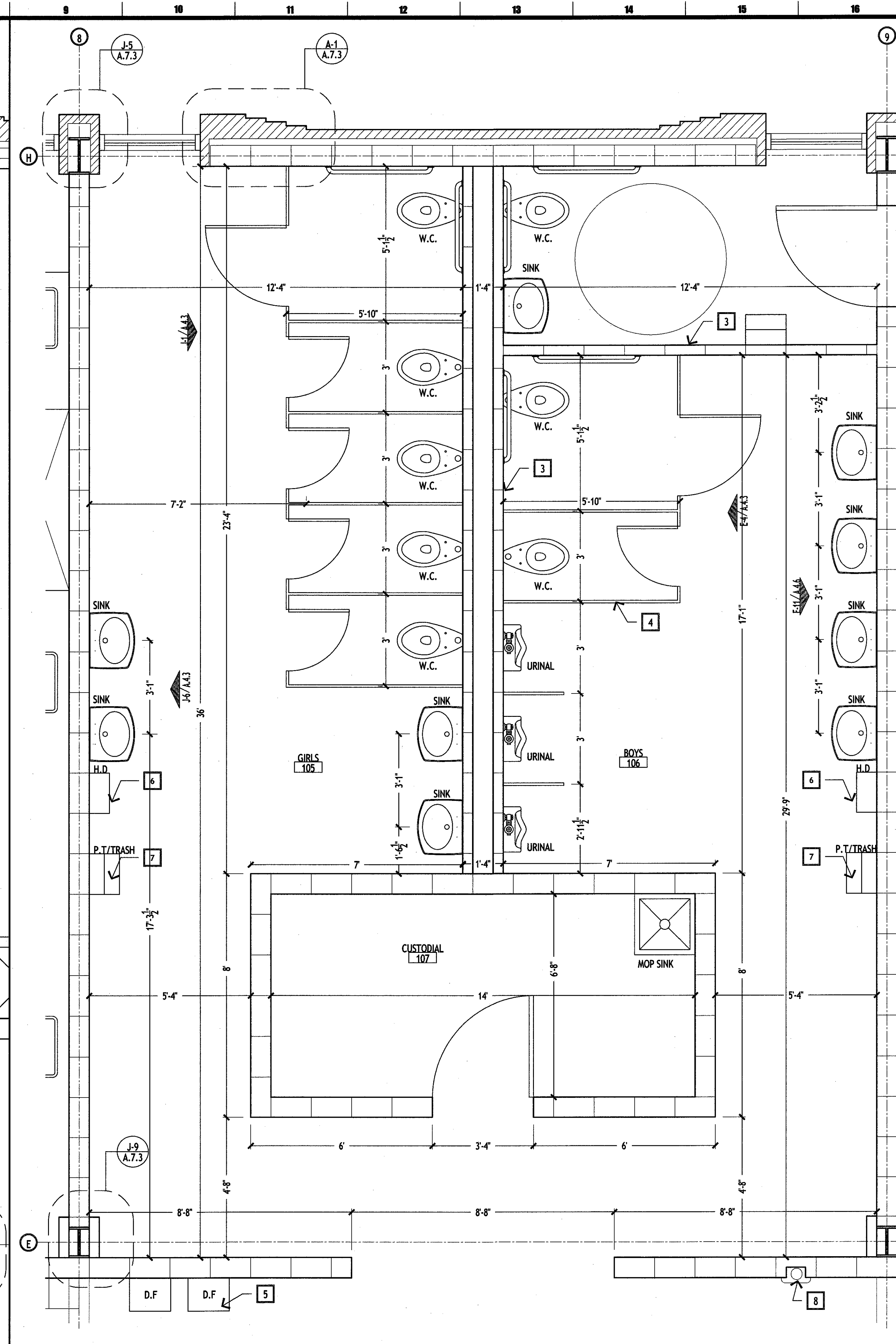
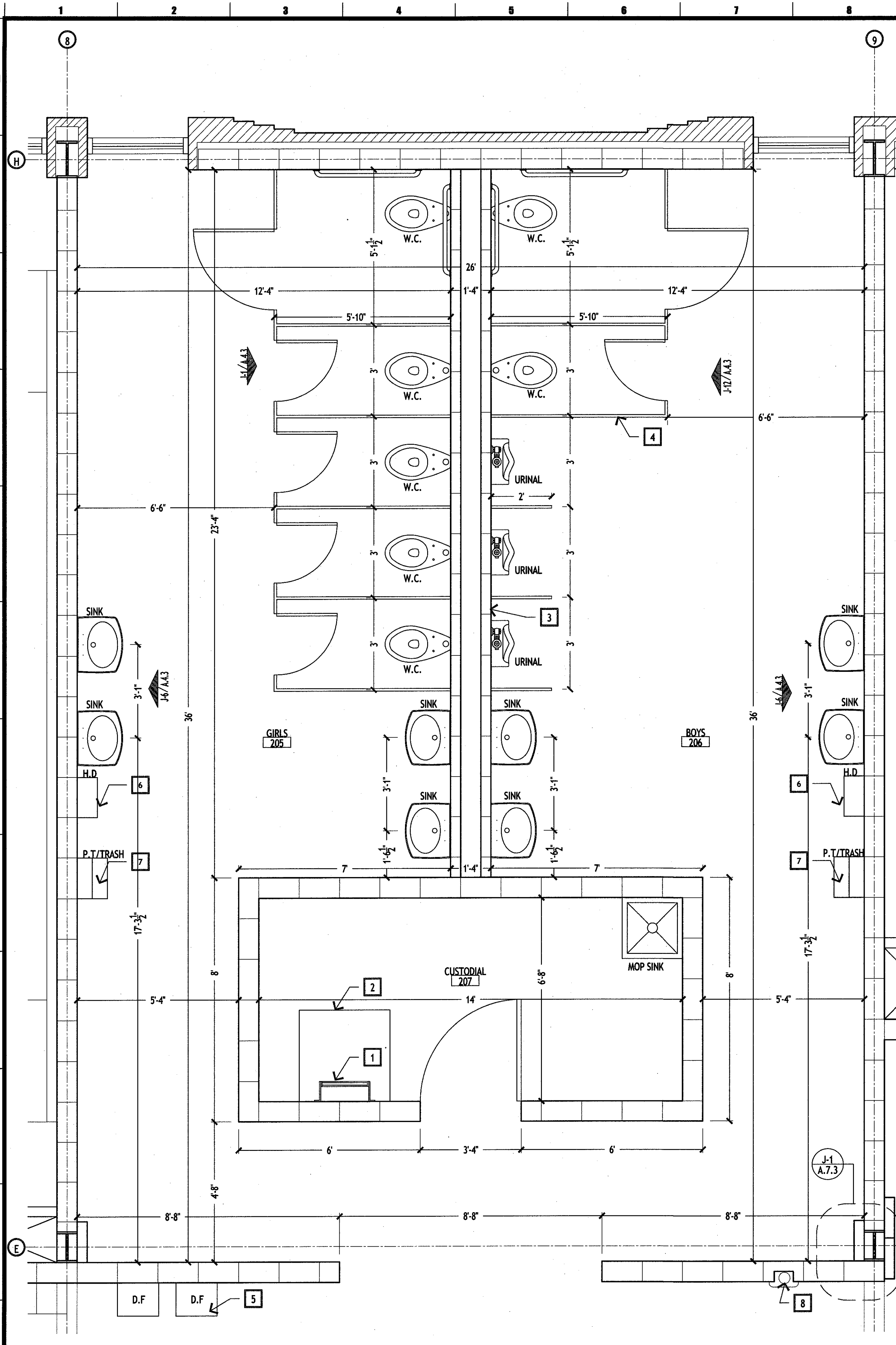

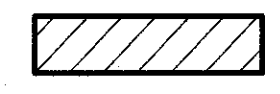


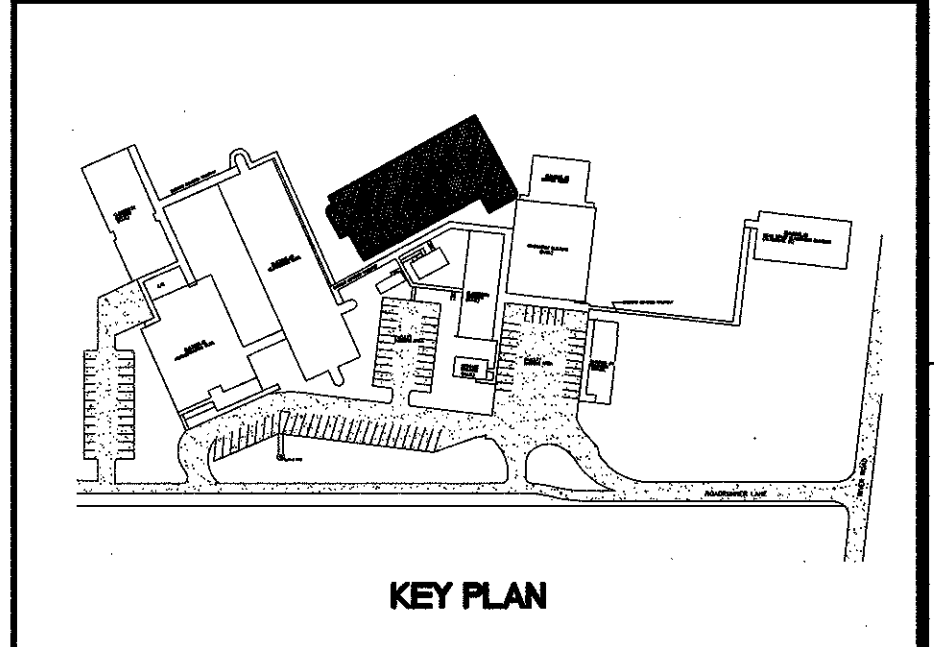
COPYRIGHT © 2010 BY MURRAY ARCHITECTS, INC. ALL RIGHTS RESERVED. THIS DOCUMENT IS THE PROPERTY OF MURRAY ARCHITECTS, INC. AND IS NOT TO BE REPRODUCED OR TRANSMITTED IN ANY FORM OR BY ANY MEANS, ELECTRONIC OR MECHANICAL, INCLUDING PHOTOCOPYING, RECORDING, OR BY ANY INFORMATION STORAGE AND RETRIEVAL SYSTEM, WITHOUT THE WRITTEN PERMISSION OF MURRAY ARCHITECTS, INC.



LEGEND

-  8" CMU WALL
-  BRICK VENEER WAL

- ### SPECIFIC NOTES
- 1 ACCESS LADDER TO MEZZANINE
 - 2 ACCESS HATCH ABOVE
 - 3 4" CMU WALLS
 - 4 SOLID PHENOLIC TOILET PARTITION
 - 5 DRINKING FOUNTAINS (SEE DETAIL E-1/A.4.4)
 - 6 HAND DRYER SEE SPECIFICATION
 - 7 PAPER TOWEL AND TRASH SEE SPECIFICATION
 - 8 FIRE EXTINGUISHER SEE SPECIFICATION



MURRAY ARCHITECTS


131 Ormond Center Court
 Metairie, LA 70007
 (504) 885-7000
 Fax: (504) 885-7007

no.	revisions	date
1		
2		
3		
4		
5		
6		


HARRY HURST MIDDLE SCHOOL
WING ADDITION

170 Roadrunner Lane, Destrehan, Louisiana 70047

DETAILED RESTROOM PLANS



MICHAEL T. TAB
REG. NO. 699
STATE OF LOUISIANA
ARCHITECT



MURRAY ARCHITECTS
project number: 1007
date: 6.14.2010
phase: CD

A.1.3

A-1 2ND FLOOR RESTROOMS 205 & 206
1/2"=1'-0"

A-9 1ST FLOOR RESTROOMS 105 & 106
1/2"=1'-0"