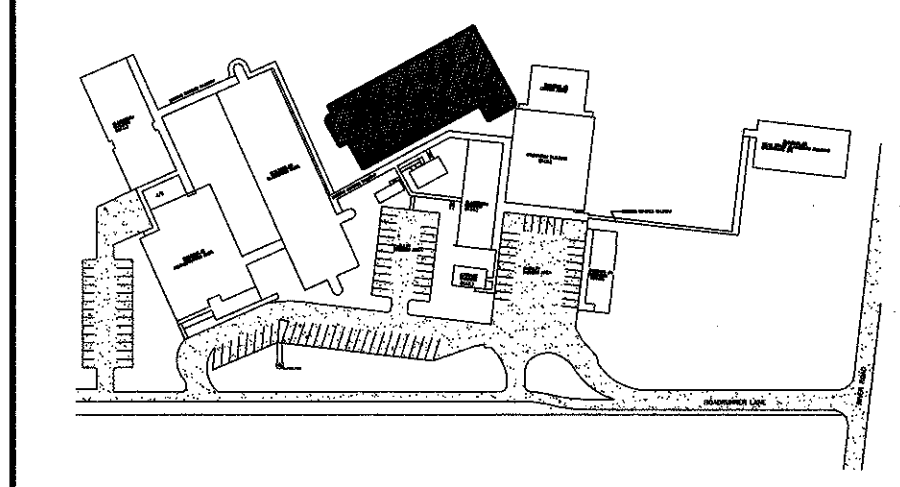


G-1 SOUTH ELEVATION

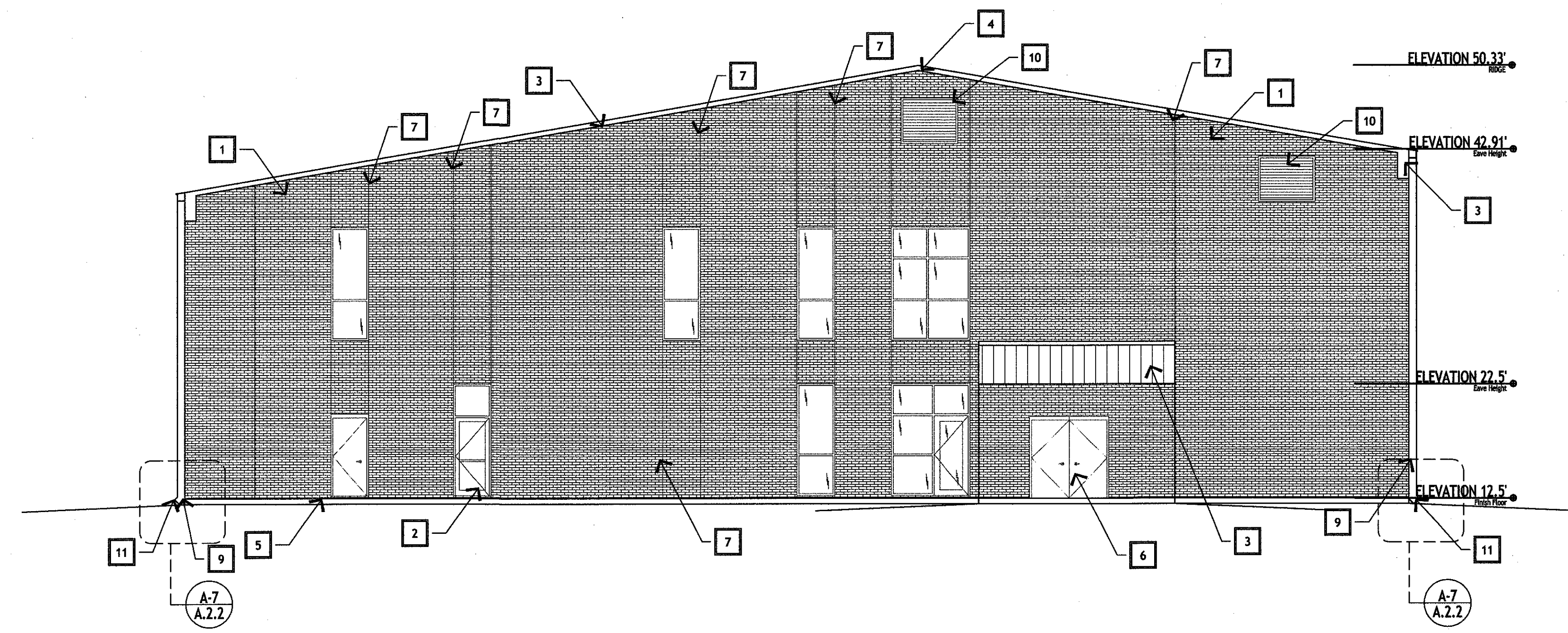
1/8"=1'-0"

SPECIFIC NOTES

- 1 BRICK VENEER
- 2 STOREFRONT (SEE SCHEDULE)
- 3 STANDING SEAM
- 4 RIDGE CAP
- 5 EXPOSED SLAB (SEE STRUCTURAL DRAWINGS)
- 6 DOOR (SEE SCHEDULE)
- 7 EXPANSION JOINT
- 8 8" GUTTER
- 9 8x8" DOWN SPOUTS
- 10 INTAKE AND EXHAUST VENTS (SEE MECHANICAL)
- 11 SEE CIVIL FOR SUBSURFACE TIE IN



KEY PLAN



A-1 NORTH ELEVATION

1/8"=1'-0"

**MURRAY ARCHITECTS**  
 131 onward center court  
 Metairie, LA 70007  
 (504) 885-7707  
 fax (504) 725-0182

no.	revisions	date
1		
2		
3		
4		
5		
6		

**HARRY HURST MIDDLE SCHOOL WING ADDITION**  
 170 Roadrunner Lane, Destrehan, Louisiana 70047

EXTERIOR ELEVATIONS

		drawing number
	project number	1007
	date	6.14.2010
	phase	CD

A.2.1

THESE DOCUMENTS ARE PROTECTED BY UNITED STATES COPYRIGHT LAW. THEY HAVE BEEN PREPARED SPECIFICALLY FOR THE PROJECT IDENTIFIED AND ARE NOT TO BE REPRODUCED OR TRANSMITTED IN ANY FORM OR BY ANY MEANS, ELECTRONIC OR MECHANICAL, INCLUDING PHOTOCOPYING, RECORDING, OR BY ANY INFORMATION STORAGE AND RETRIEVAL SYSTEM, WITHOUT THE WRITTEN PERMISSION OF THE ARCHITECT. ALL RIGHTS ARE RESERVED TO MURRAY ARCHITECTS.