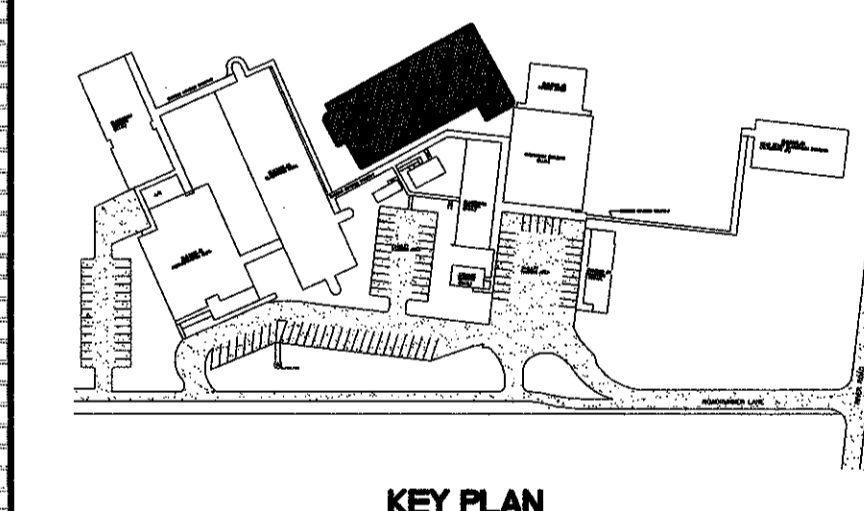


THESE DOCUMENTS ARE PROTECTED BY UNITED STATES COPYRIGHT LAW. THEY HAVE BEEN PREPARED SPECIFICALLY FOR THE CLIENT AND ARE NOT TO BE REPRODUCED OR TRANSMITTED IN ANY FORM OR BY ANY MEANS, ELECTRONIC OR MECHANICAL, INCLUDING PHOTOCOPYING, RECORDING, OR BY ANY INFORMATION STORAGE AND RETRIEVAL SYSTEM, WITHOUT THE EXPRESS WRITTEN PERMISSION OF MURRAY ARCHITECTS. ALL RIGHTS ARE RESERVED TO MURRAY ARCHITECTS.

SPECIFIC NOTES

- 1 BRICK VENEER
- 2 STOREFRONT (SEE SCHEDULE)
- 3 STANDING SEAM
- 4 RIDGE CAP
- 5 EXPOSED SLAB (SEE STRUCTURAL DRAWINGS)
- 6 DOOR (SEE SCHEDULE)
- 7 EXPANSION JOINT
- 8 8" GUTTER
- 9 DOWN SPOUTS
- 10 INTAKE AND EXHAUST VENTS (SEE MECHANICAL)
- 11 SEE CIVIL FOR SUBSURFACE TIE IN
- 12 MCKINLEY IRON WORKS EXTRUDED ALUMINUM DOWNSPOUT BOOT, TYPE D54



m

MURRAY ARCHITECTS

131 onward center court
 Metairie, LA 70002
 (504) 885-7255
 fax (504) 725-0182

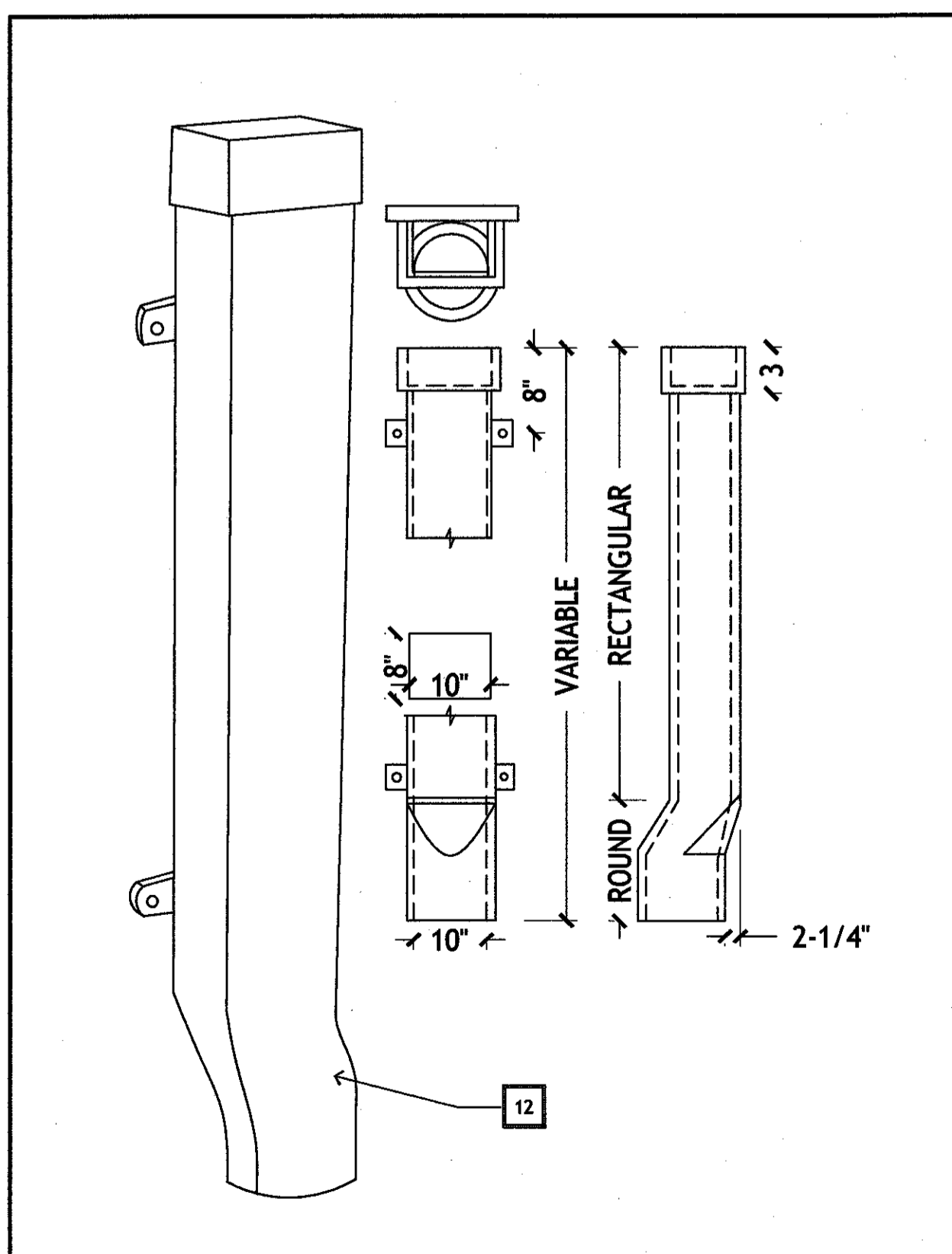
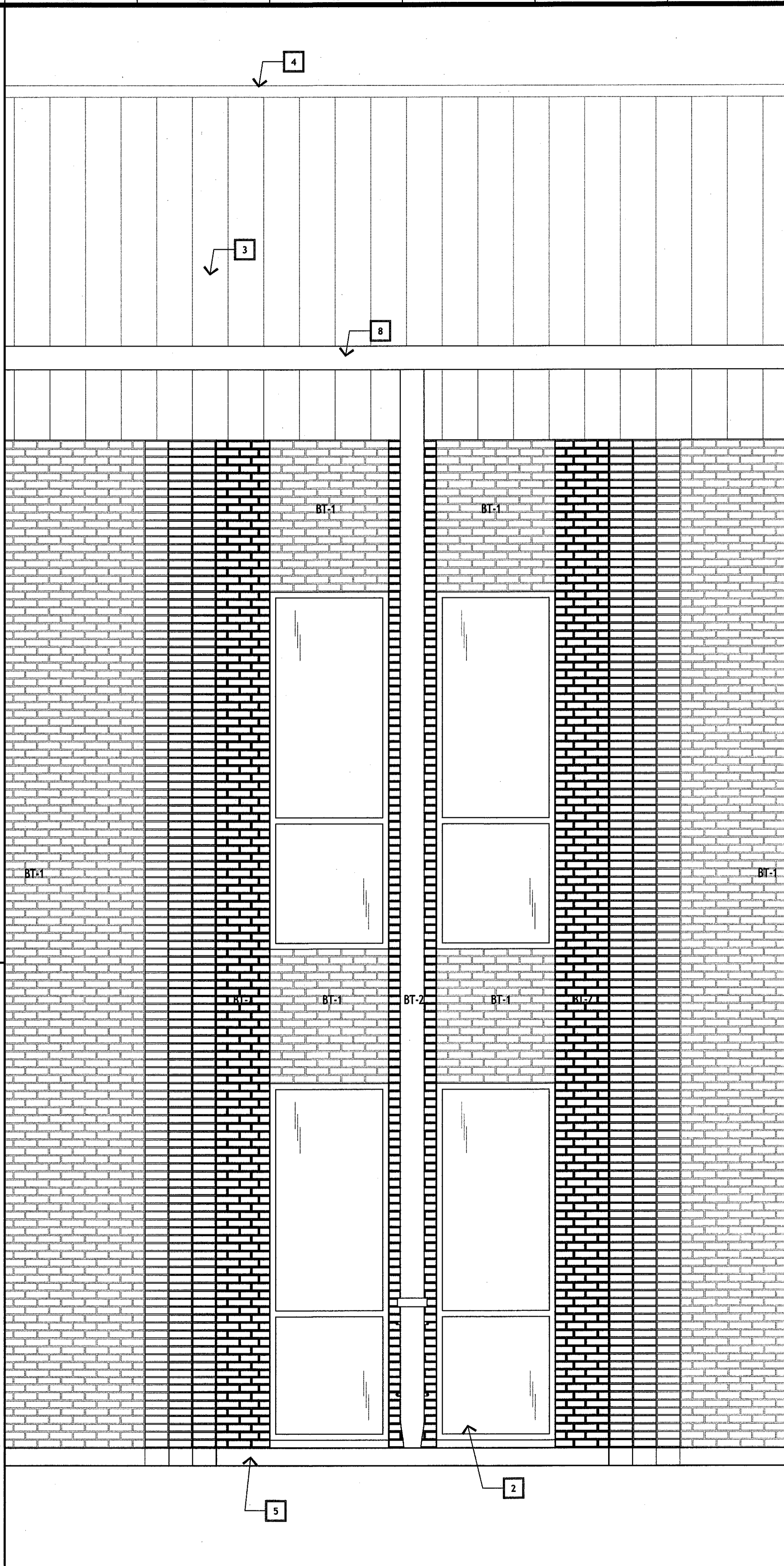
no.	revisions	date
1		
2		
3		
4		
5		
6		

HARRY HURST MIDDLE SCHOOL
 WING ADDITION

170 Roadrunner Lane, Destrehan, Louisiana 70047

EXTERIOR ELEVATIONS

	<p style="font-size: 0.8em; margin: 0;"> MURRAY ARCHITECTS project number 1007 date 6.14.2010 phase CD </p>	A.2.2
--	---	-------



A-7 DOWNSPOUT BOOT DETAIL
 N.T.S

A-11 ELEVATION DETAIL
 1/2"=1'-0"