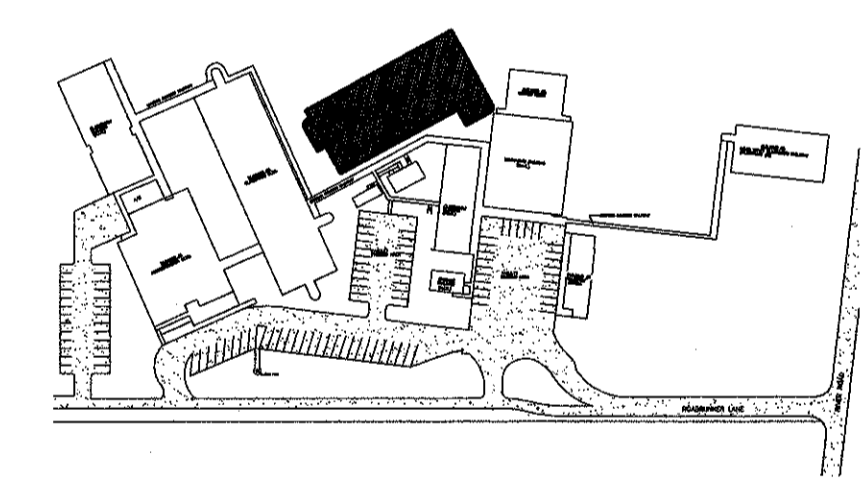
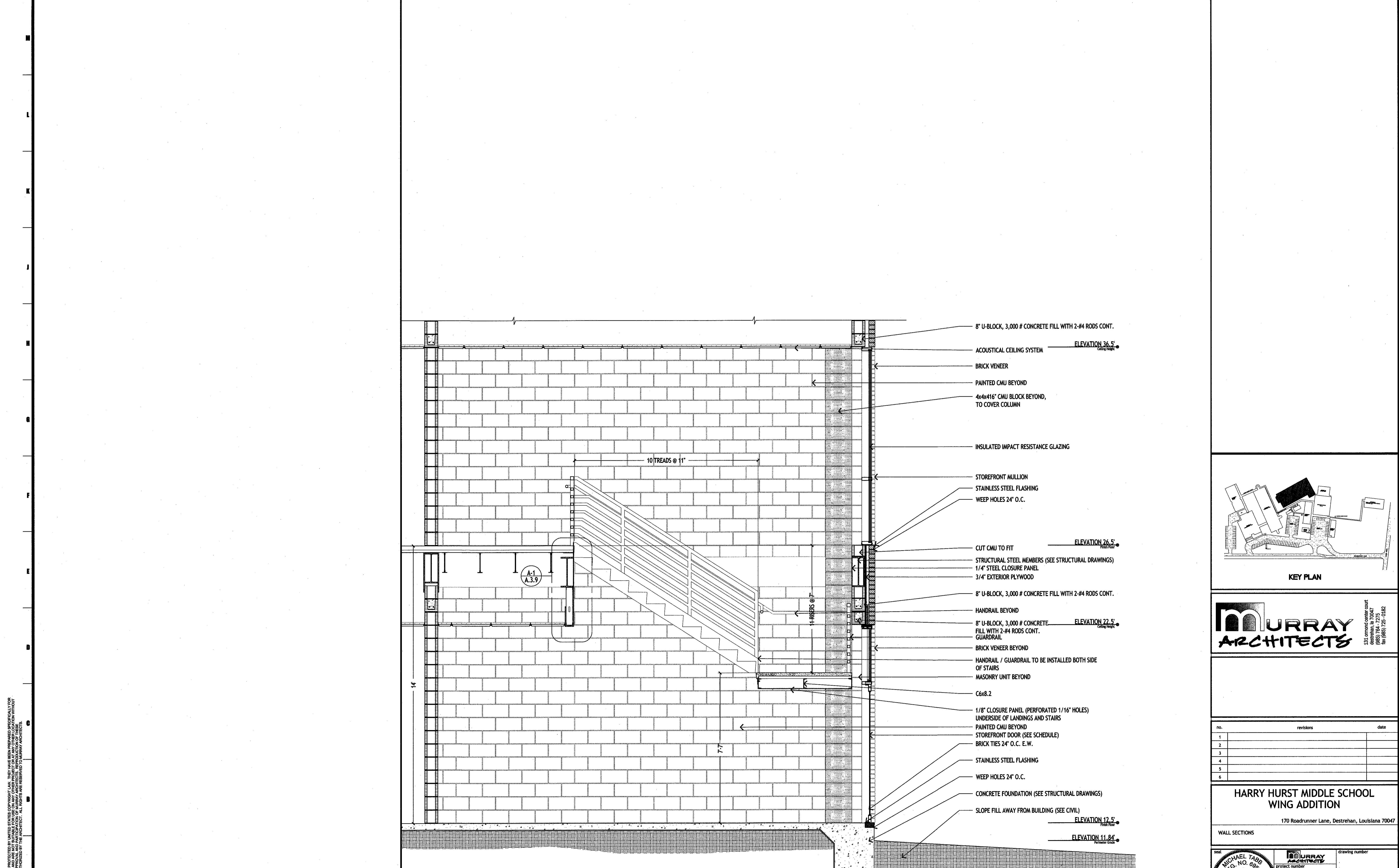


1 2 3 4 5 6 7 8 9 10 11 12 13 14 15 16



MURRAY ARCHITECTS
 131 Ormond Center Court
 Destrehan, LA 70047
 (504) 784-7275
 fax (504) 725-0182

no.	revisions	date
1		
2		
3		
4		
5		
6		

HARRY HURST MIDDLE SCHOOL WING ADDITION
 170 Roadrunner Lane, Destrehan, Louisiana 70047

WALL SECTIONS

		drawing number 1007 project number 6.14.2010 date CD phase
--	--	------------------------------------------------------------------------------

A-6 TYPICAL STAIR SECTION
 1/2"=1'-0"

COPYRIGHT © 2010 BY MURRAY ARCHITECTS, INC. ALL RIGHTS RESERVED. NO PART OF THIS DOCUMENT MAY BE REPRODUCED OR TRANSMITTED IN ANY FORM OR BY ANY MEANS, ELECTRONIC OR MECHANICAL, WITHOUT PERMISSION IN WRITING FROM MURRAY ARCHITECTS, INC.