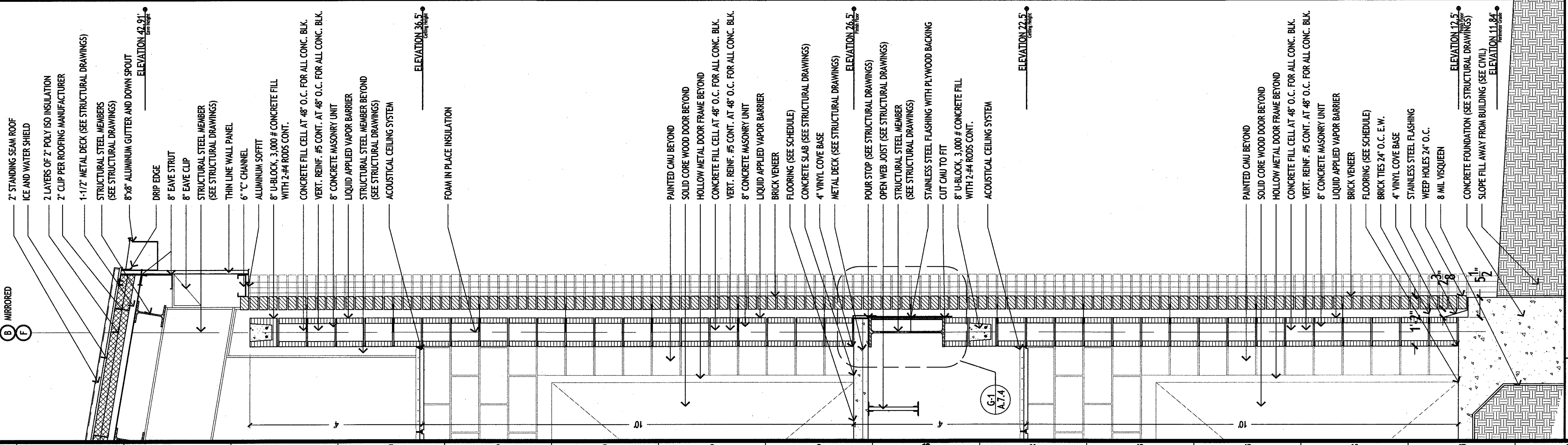
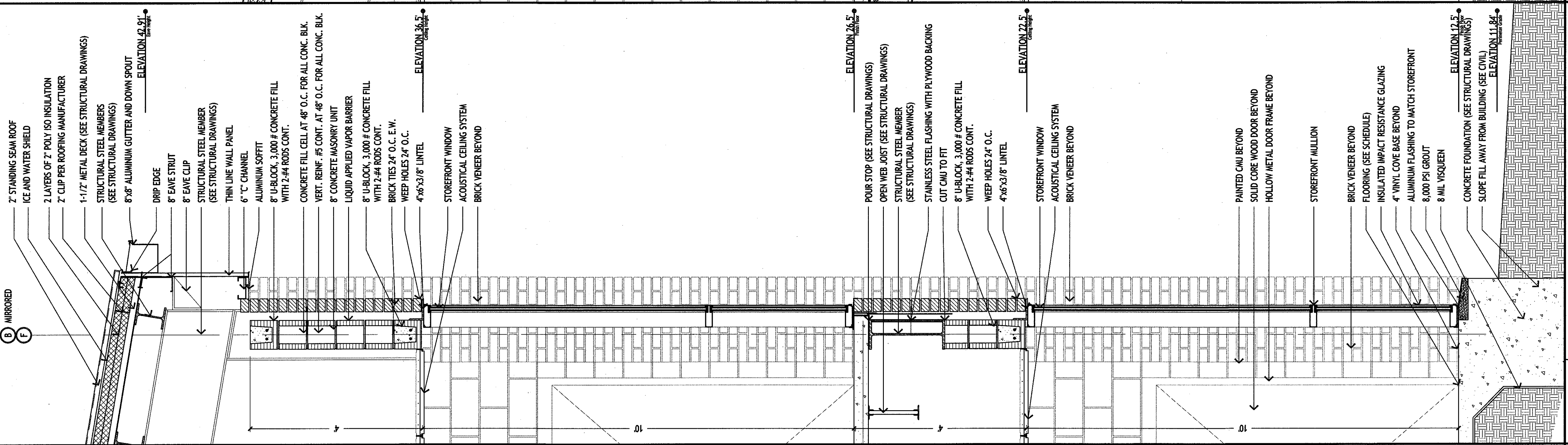


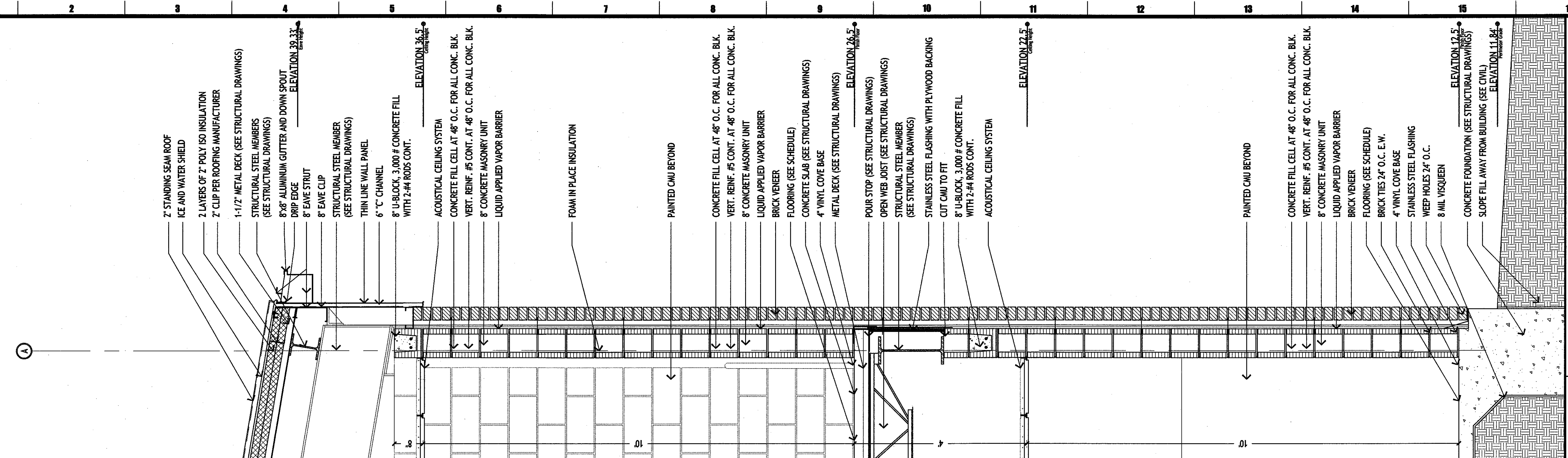
THESE DOCUMENTS ARE PROTECTED BY UNITED STATES COPYRIGHT LAW. THEY HAVE BEEN PREPARED SPECIFICALLY FOR THE PROJECT AND ARE NOT TO BE REPRODUCED OR TRANSMITTED IN ANY FORM OR BY ANY MEANS, ELECTRONIC OR MECHANICAL, INCLUDING PHOTOCOPYING, RECORDING, OR BY ANY INFORMATION STORAGE AND RETRIEVAL SYSTEM, WITHOUT THE EXPRESS WRITTEN PERMISSION OF THE ARCHITECT. ALL RIGHTS ARE RESERVED TO MURRAY ARCHITECTS.



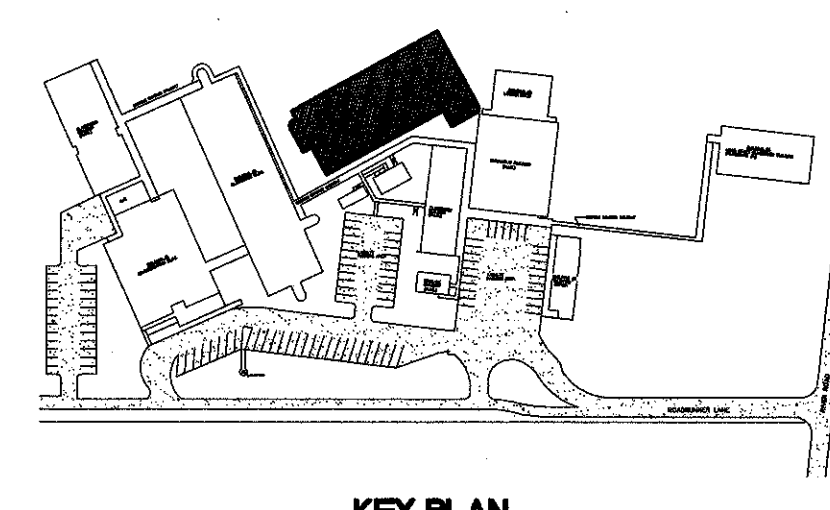
A-16 WALL SECTION
3/4"=1'-0"



E-16 WALL SECTION
3/4"=1'-0"



J-16 WALL SECTION
3/4"=1'-0"



MURRAY ARCHITECTS
333 ornate center court
170 roadrunner lane
destrehan, louisiana 70047
phone (985) 764-7775
fax (985) 725-0182

no.	revisions	date
1		
2		
3		
4		
5		
6		

HARRY HURST MIDDLE SCHOOL WING ADDITION
170 Roadrunner Lane, Destrehan, Louisiana 70047
WALL SECTIONS

MICHAEL TABS REG. NO. 895
MURRAY ARCHITECTS
project number 1007
date 6.14.2010
phase CD
drawing number **A.3.2**