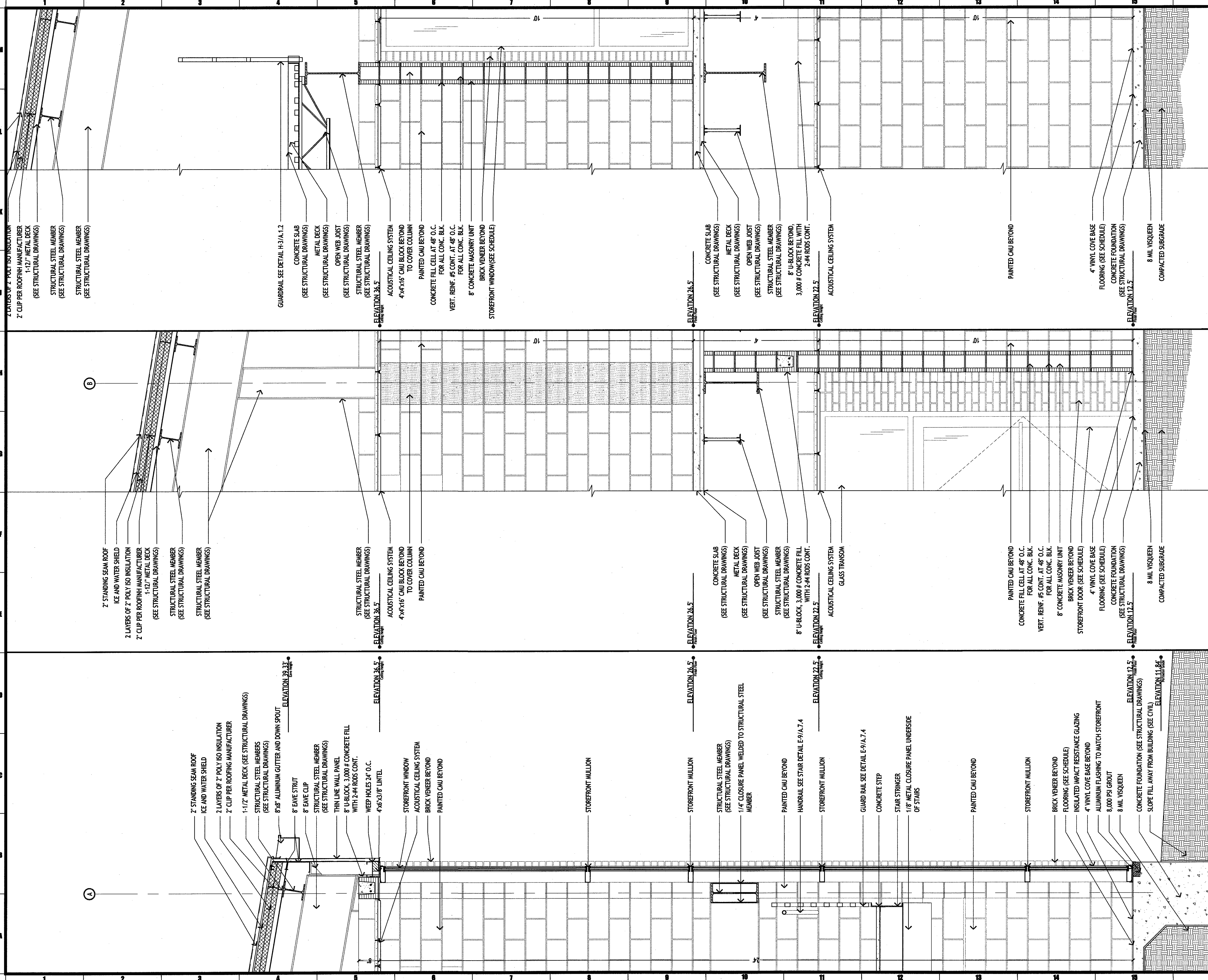


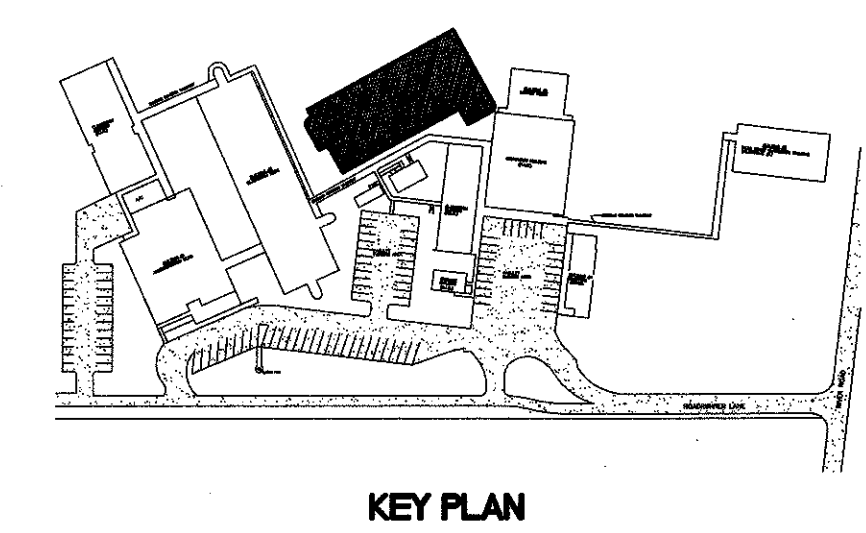
COPYRIGHT © 2010 BY MURRAY ARCHITECTS, INC. ALL RIGHTS RESERVED. THIS DRAWING IS THE PROPERTY OF MURRAY ARCHITECTS, INC. AND IS NOT TO BE REPRODUCED OR TRANSMITTED IN ANY FORM OR BY ANY MEANS, ELECTRONIC OR MECHANICAL, INCLUDING PHOTOCOPYING, RECORDING, OR BY ANY INFORMATION STORAGE AND RETRIEVAL SYSTEM, WITHOUT THE WRITTEN PERMISSION OF MURRAY ARCHITECTS, INC.



A-16 WALL SECTION
3/4"=1'-0"

E-16 WALL SECTION
3/4"=1'-0"

J-16 WALL SECTION
3/4"=1'-0"



MURRAY ARCHITECTS
131 Omond Center Court
Destrehan, LA 70047
(855) 764-7275
fax (504) 725-0182

no.	revisions	date
1		
2		
3		
4		
5		
6		

HARRY HURST MIDDLE SCHOOL WING ADDITION
170 Roadrunner Lane, Destrehan, Louisiana 70047

WALL SECTIONS

3/4"=1'-0"

MICHAEL TABB
REG. NO. 0859
MURRAY ARCHITECTS
project number 1007
date 6.14.2010
phase CD

drawing number **A.3.3**