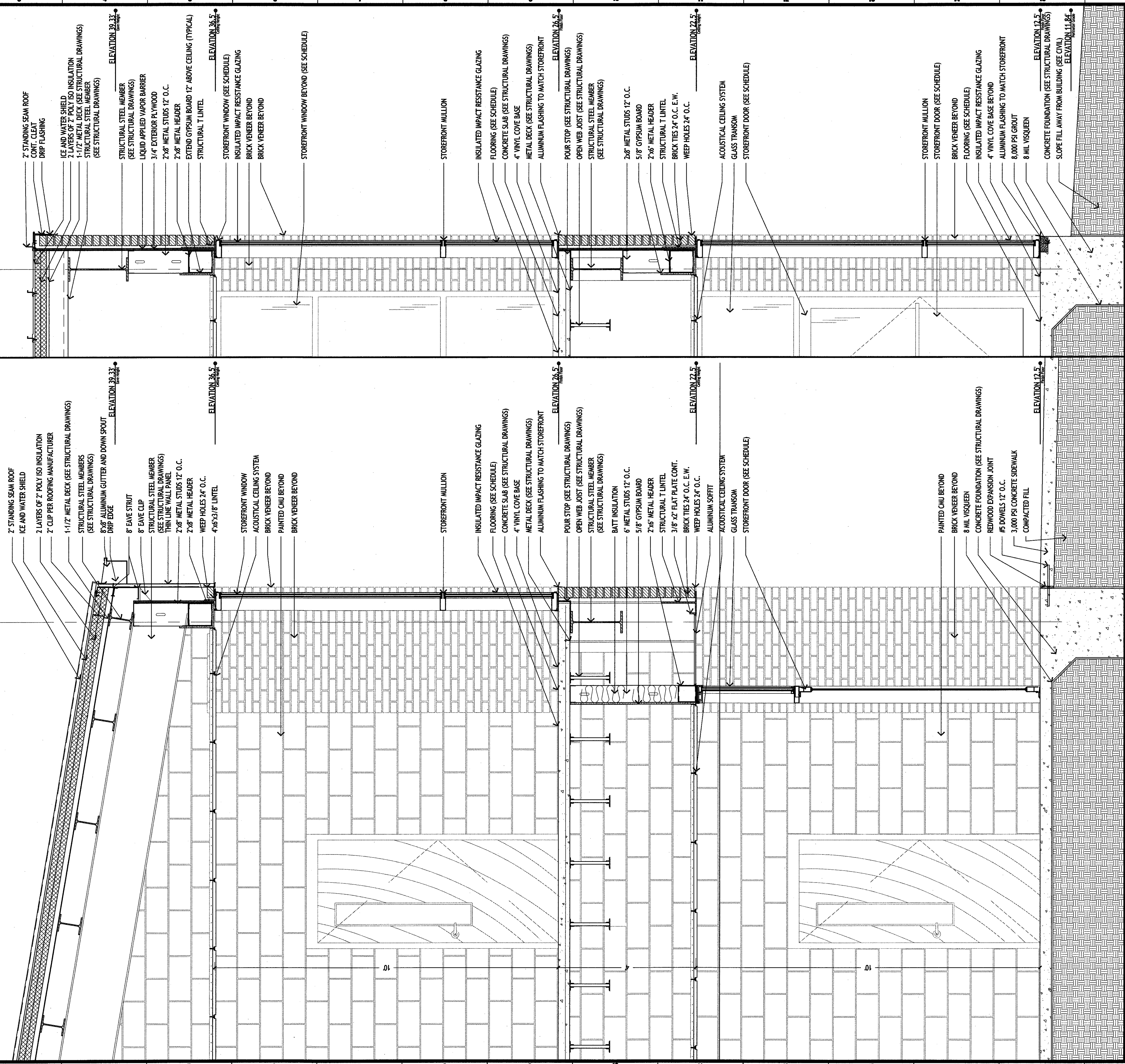


COPYRIGHT © 2010 BY MURRAY ARCHITECTS, INC. ALL RIGHTS RESERVED. THIS DOCUMENT IS THE PROPERTY OF MURRAY ARCHITECTS, INC. AND IS NOT TO BE REPRODUCED OR TRANSMITTED IN ANY FORM OR BY ANY MEANS, ELECTRONIC OR MECHANICAL, INCLUDING PHOTOCOPYING, RECORDING, OR BY ANY INFORMATION STORAGE AND RETRIEVAL SYSTEM, WITHOUT THE WRITTEN PERMISSION OF MURRAY ARCHITECTS, INC.

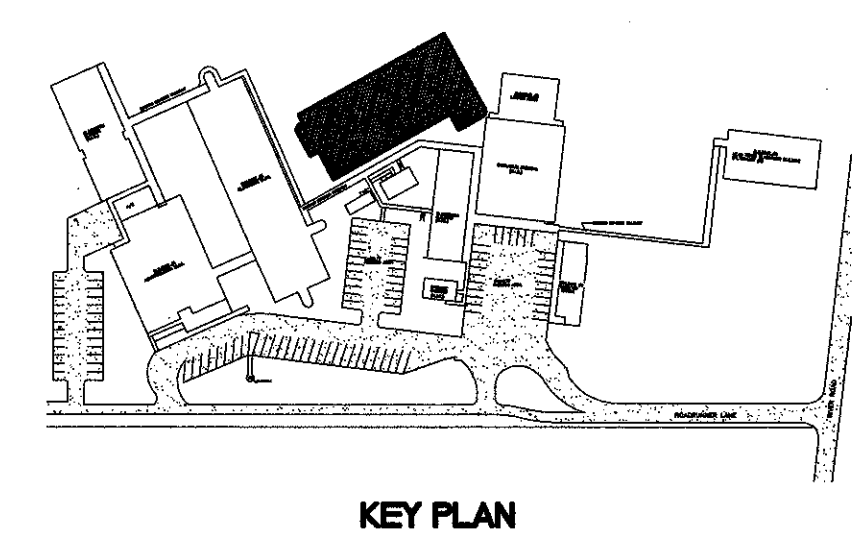


**J-16 WALL SECTION**

3/4"=1'-0"

**A-16 WALL SECTION**

3/4"=1'-0"



**MURRAY ARCHITECTS**  
 131 Ormond Center Court  
 Destrehan, LA 70047  
 (504) 725-0082  
 Fax: (504) 725-0082

no.	revisions	date
1		
2		
3		
4		
5		
6		

**HARRY HURST MIDDLE SCHOOL WING ADDITION**  
 170 Roadrunner Lane, Destrehan, Louisiana 70047

WALL SECTIONS

see	MURRAY ARCHITECTS	drawing number
project number	1007	
date	6.14.2010	<b>A.3.5</b>
phase	CD	