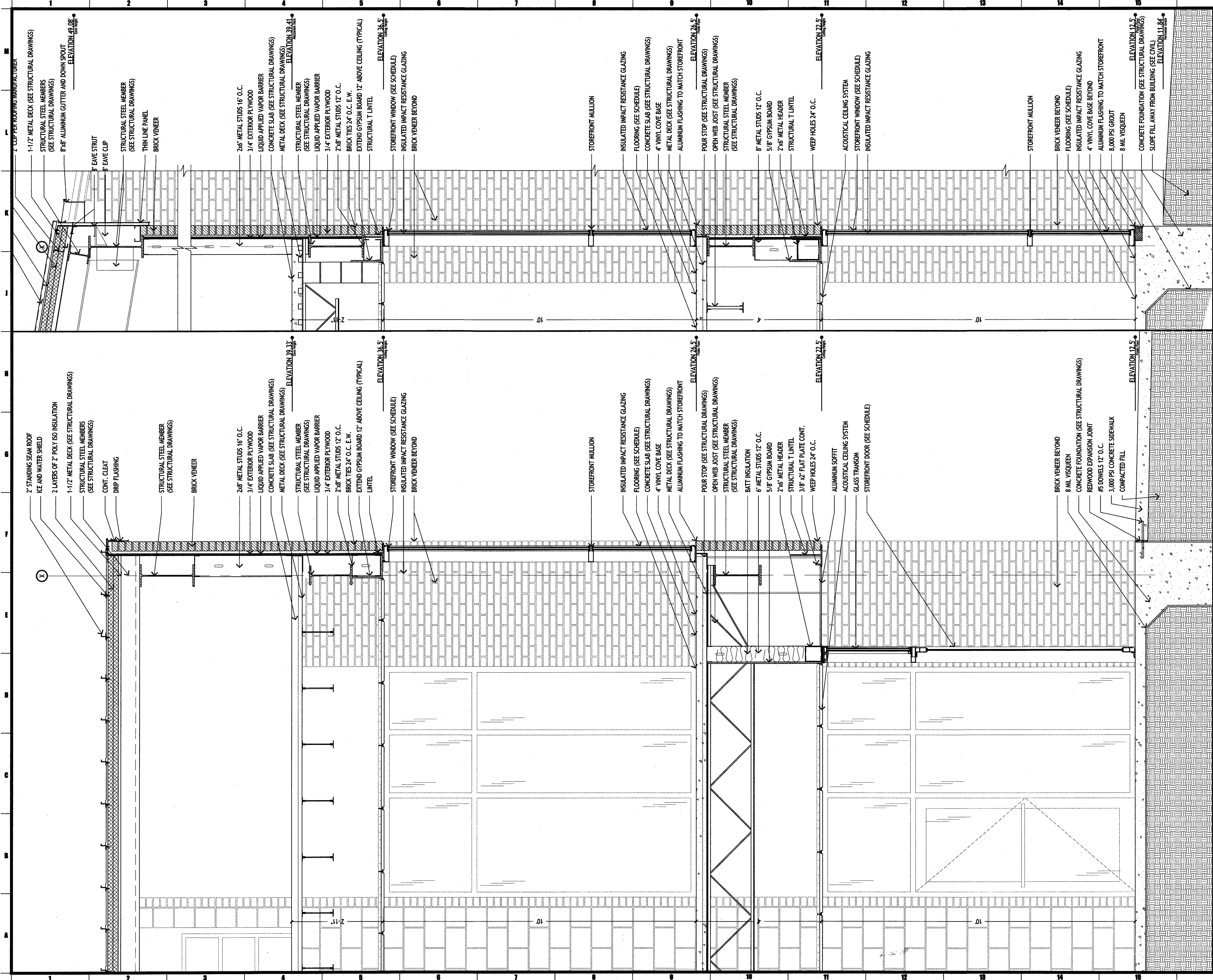


COPYRIGHT © 2010 BY MURRAY ARCHITECTS, INC. ALL RIGHTS RESERVED. THIS DRAWING IS THE PROPERTY OF MURRAY ARCHITECTS, INC. AND IS NOT TO BE REPRODUCED OR TRANSMITTED IN ANY FORM OR BY ANY MEANS, ELECTRONIC OR MECHANICAL, INCLUDING PHOTOCOPYING, RECORDING, OR BY ANY INFORMATION STORAGE AND RETRIEVAL SYSTEM, WITHOUT THE WRITTEN PERMISSION OF MURRAY ARCHITECTS, INC.

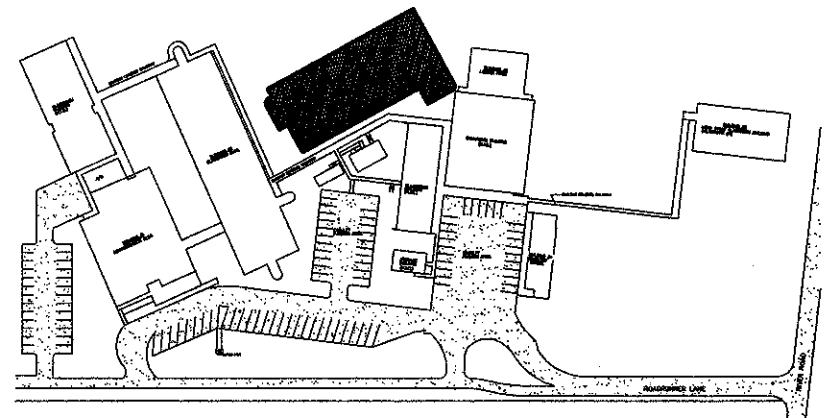


J-16 WALL SECTION

3/4"=1'-0"

A-16 WALL SECTION

3/4"=1'-0"



KEY PLAN



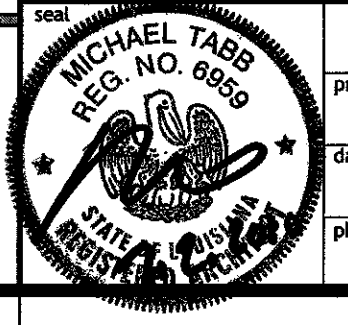
131 Armond Center Court
Destrehan, LA 70047
(985) 64-7275
fax (985) 725-0382

| no. | revisions | date |
|-----|-----------|------|
| 1 | | |
| 2 | | |
| 3 | | |
| 4 | | |
| 5 | | |
| 6 | | |

HARRY HURST MIDDLE SCHOOL WING ADDITION

170 Roadrunner Lane, Destrehan, Louisiana 70047

WALL SECTIONS



drawing number
1007
date
6.14.2010
phase
CD

A.3.6