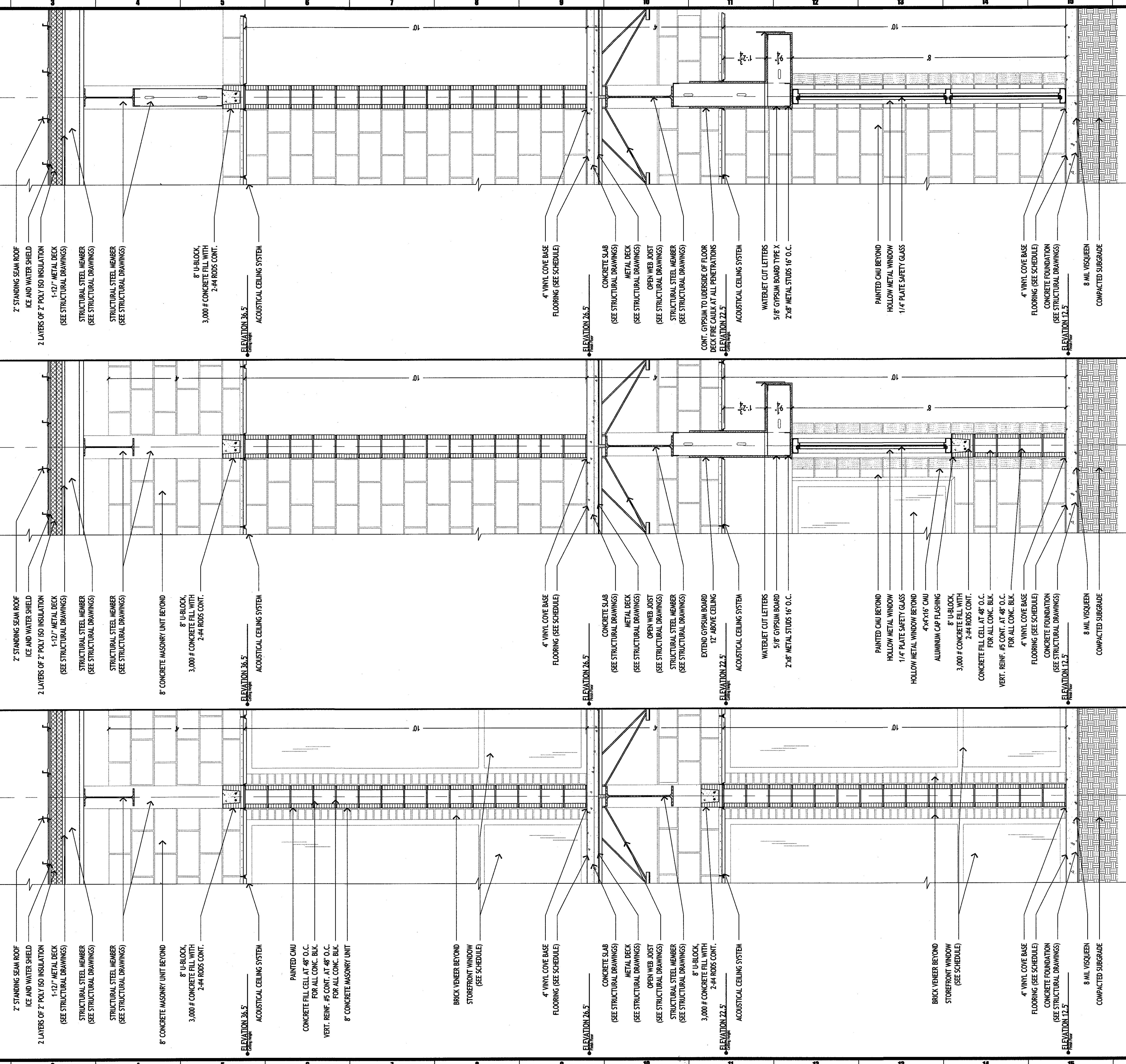
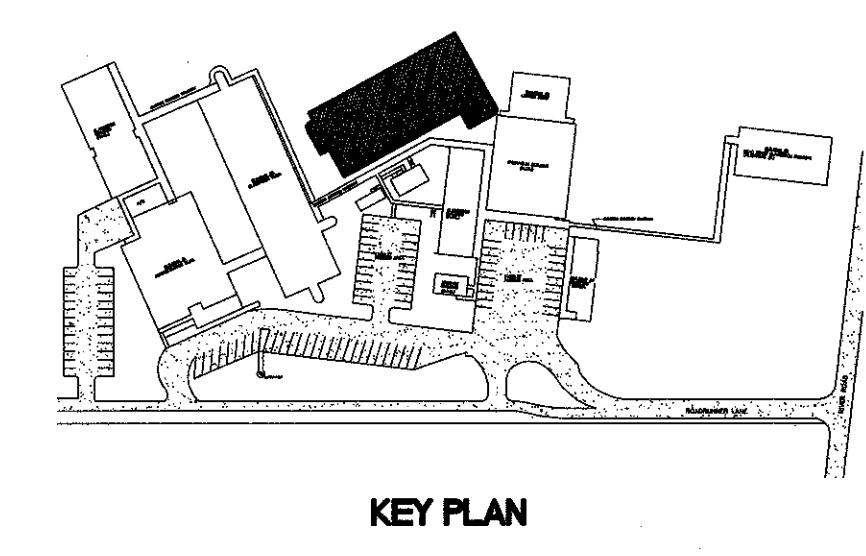


COPYRIGHT © 2010 BY MURRAY ARCHITECTS, INC. ALL RIGHTS RESERVED. THIS DRAWING IS THE PROPERTY OF MURRAY ARCHITECTS, INC. AND IS NOT TO BE REPRODUCED OR TRANSMITTED IN ANY FORM OR BY ANY MEANS, ELECTRONIC OR MECHANICAL, INCLUDING PHOTOCOPYING, RECORDING, OR BY ANY INFORMATION STORAGE AND RETRIEVAL SYSTEM, WITHOUT THE WRITTEN PERMISSION OF MURRAY ARCHITECTS, INC.



A-16	E-16	J-16
WALL SECTION	WALL SECTION	WALL SECTION
3/4"=1'-0"	3/4"=1'-0"	3/4"=1'-0"



MURRAY ARCHITECTS
131 ornard center court
 destrehan, la 70047
 (985) 784-7275
 fax (985) 725-0182

no.	revisions	date
1		
2		
3		
4		
5		
6		

HARRY HURST MIDDLE SCHOOL WING ADDITION
 170 Roadrunner Lane, Destrehan, Louisiana 70047
 WALL SECTIONS

 MICHAEL TABB REG. NO. 9859 STATE OF LOUISIANA	 MURRAY ARCHITECTS PROJECT NUMBER: 1007 DATE: 6.14.2010 PHASE: CD	drawing number <h1 style="font-size: 2em;">A.3.7</h1>
---	---	--