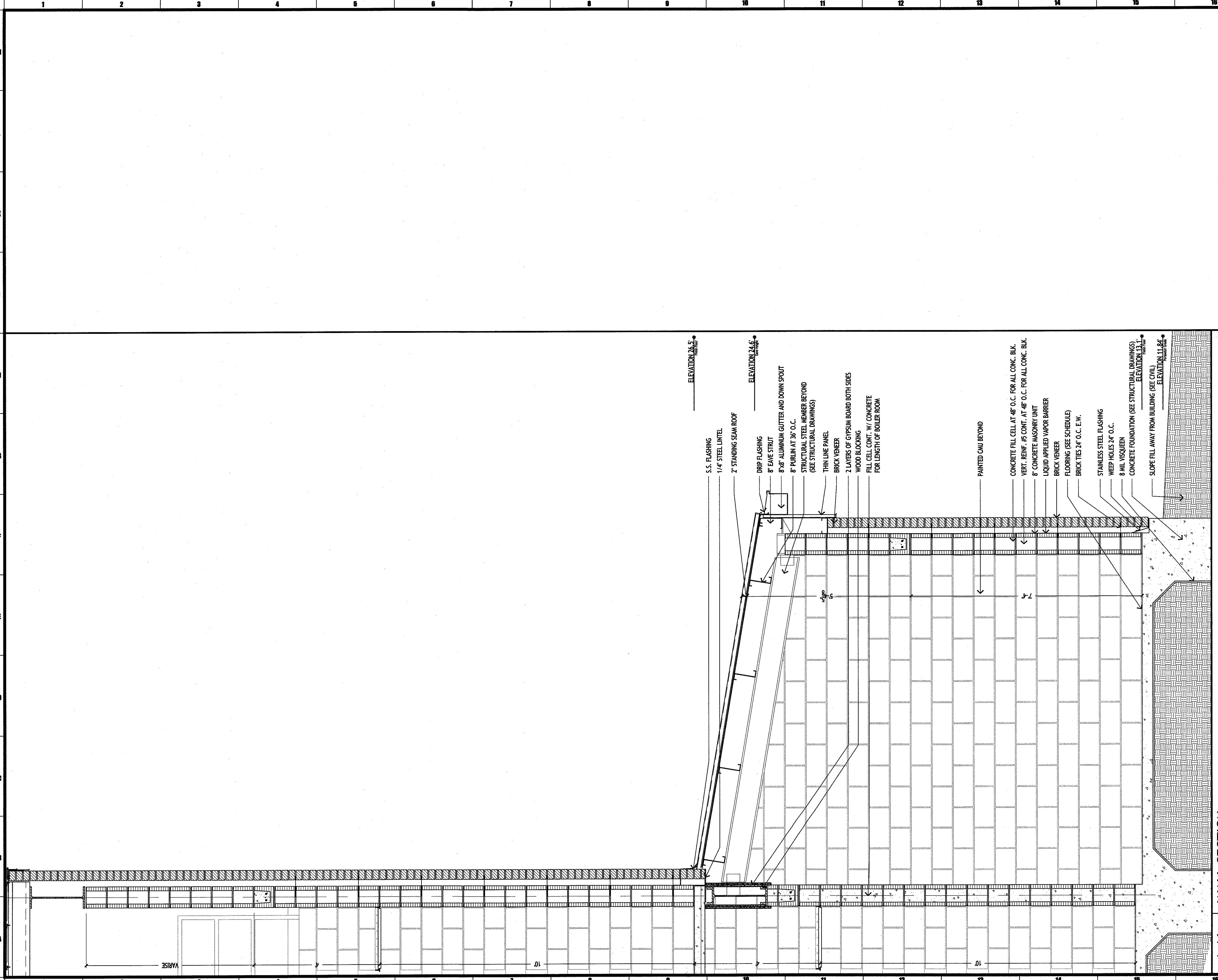
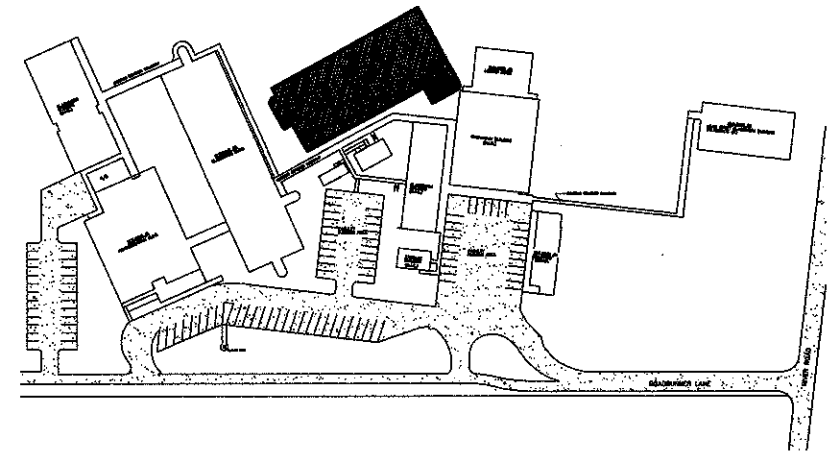


COPYRIGHT: THESE DRAWINGS ARE PREPARED BY MURRAY ARCHITECTS, INC. THESE DRAWINGS ARE PREPARED SPECIFICALLY FOR THE PROJECT IDENTIFIED AND ARE NOT SUITABLE FOR USE ON ANY OTHER PROJECT OR IN ANY OTHER LOCATION WITHOUT THE WRITTEN PERMISSION OF MURRAY ARCHITECTS, INC. ALL RIGHTS ARE RESERVED TO MURRAY ARCHITECTS.



ELEVATION 26.5
 ELEVATION 24.6
 ELEVATION 13.1
 ELEVATION 11.8

S.S. FLASHING
 1/4\" STEEL LINTEL
 2\" STANDING SEAM ROOF
 DRIP FLASHING
 8\" EAVE STRUT
 8\"x8\" ALUMINUM GUTTER AND DOWN SPOUT
 8\" PURLIN AT 36\" O.C.
 STRUCTURAL STEEL MEMBER BEYOND
 (SEE STRUCTURAL DRAWINGS)
 THIN LINE PANEL
 BRICK VENEER
 2 LAYERS OF GYPSUM BOARD BOTH SIDES
 WOOD BLOCKING
 FILL CELL CONT. W/ CONCRETE
 FOR LENGTH OF BOILER ROOM
 PAINTED CMU BEYOND
 CONCRETE FILL CELL AT 48\" O.C. FOR ALL CONC. B.L.K.
 VERT. REINF. #5 CONT. AT 48\" O.C. FOR ALL CONC. B.L.K.
 8\" CONCRETE MASONRY UNIT
 LIQUID APPLIED VAPOR BARRIER
 BRICK VENEER
 FLOORING (SEE SCHEDULE)
 BRICK TIES 24\" O.C. E.W.
 STAINLESS STEEL FLASHING
 WEEP HOLES 24\" O.C.
 8 MIL VISQUEEN
 CONCRETE FOUNDATION (SEE STRUCTURAL DRAWINGS)
 SLOPE FILL AWAY FROM BUILDING (SEE CIVIL)



KEY PLAN

MURRAY ARCHITECTS
 131 Ormond Center Court
 Destrehan, LA 70047
 (985) 784-7275
 fax: (985) 725-0282

no.	revisions	date
1		
2		
3		
4		
5		
6		

HARRY HURST MIDDLE SCHOOL WING ADDITION

170 Roadrunner Lane, Destrehan, Louisiana 70047

WALL SECTIONS

		drawing number
	project number	1007
	date	6.14.2010
	phase	CD

A.3.8

A-16 WALL SECTION

3/4"=1'-0"