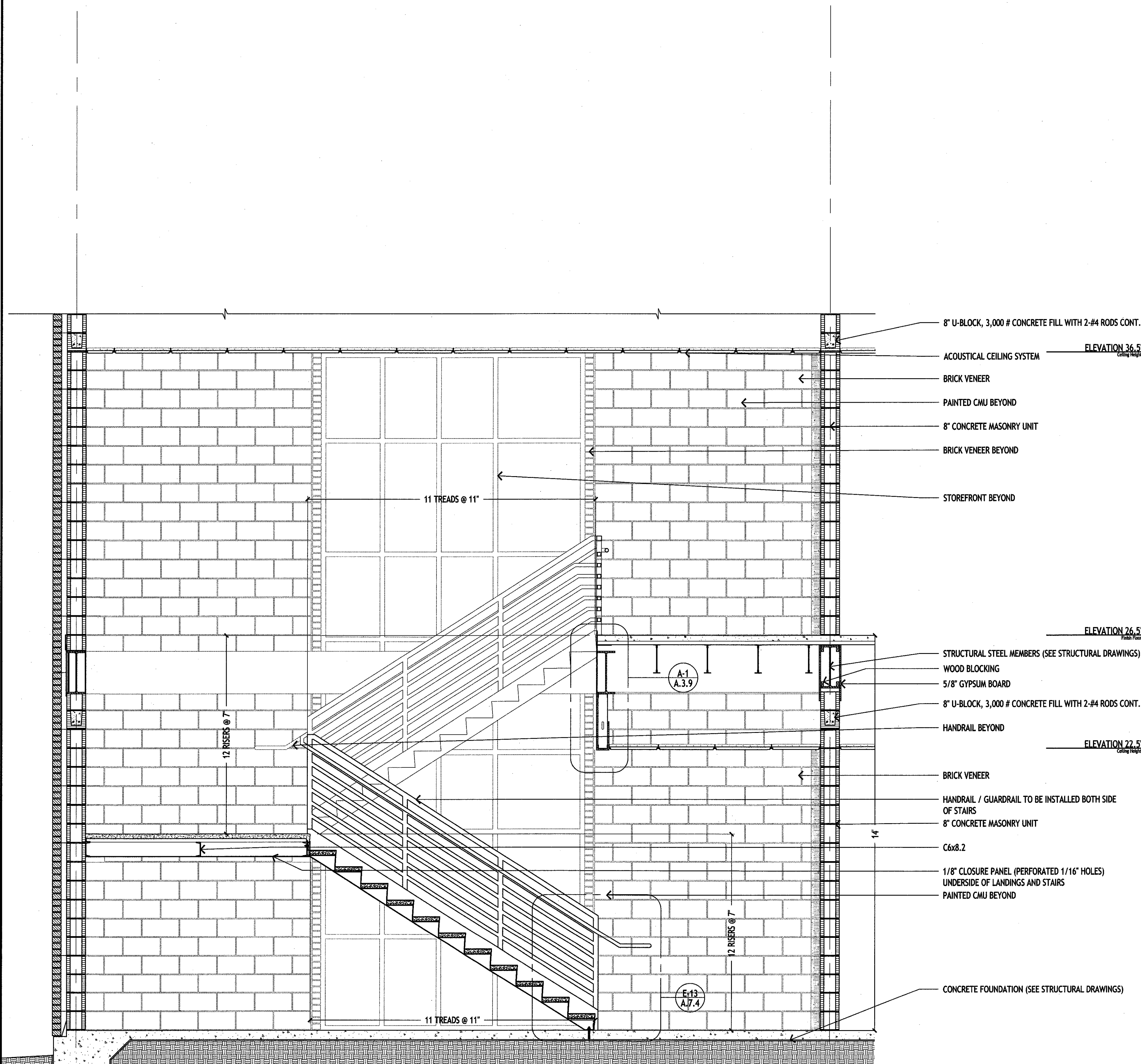
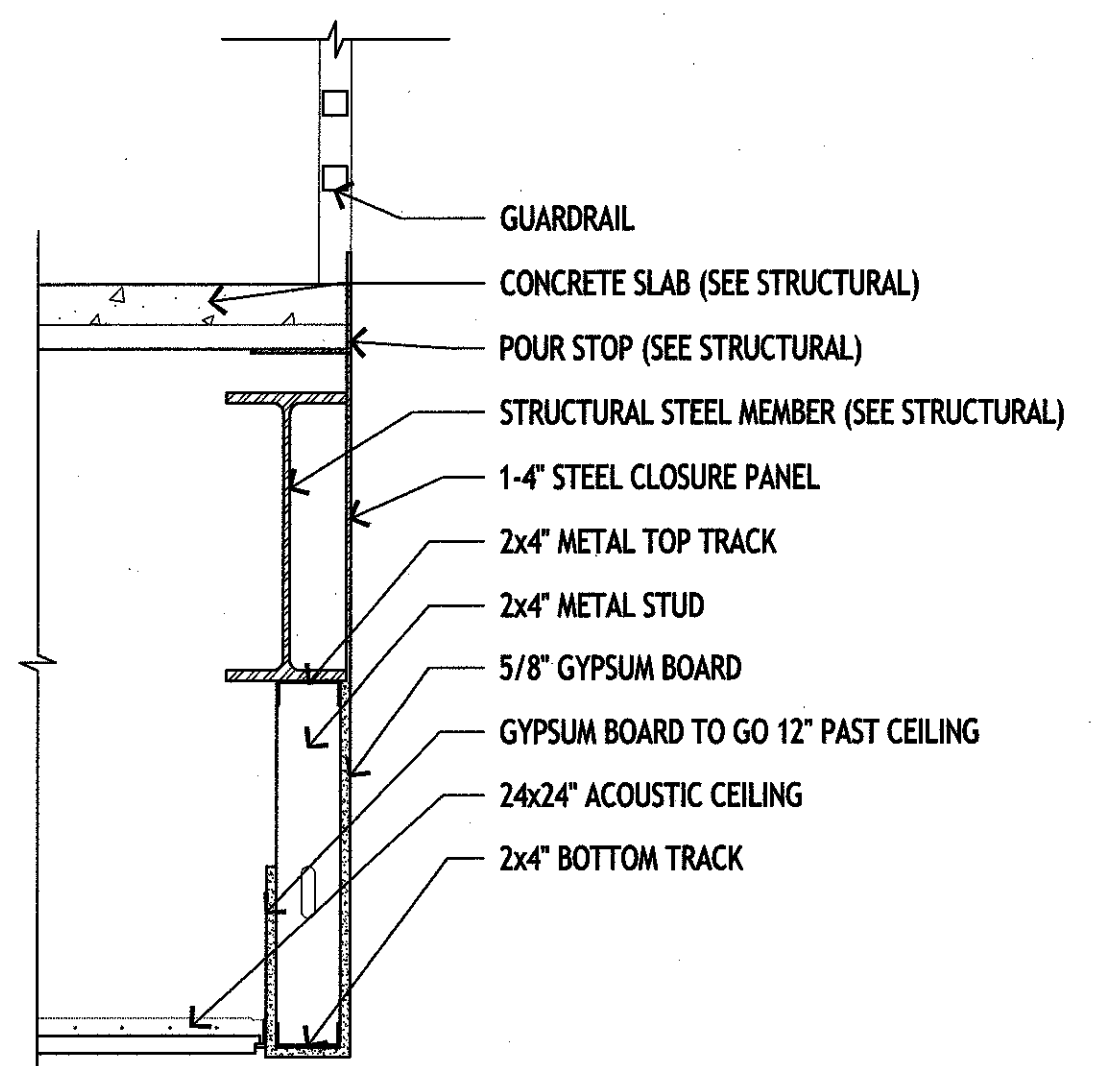


1 2 3 4 5 6 7 8 9 10 11 12 13 14 15 16

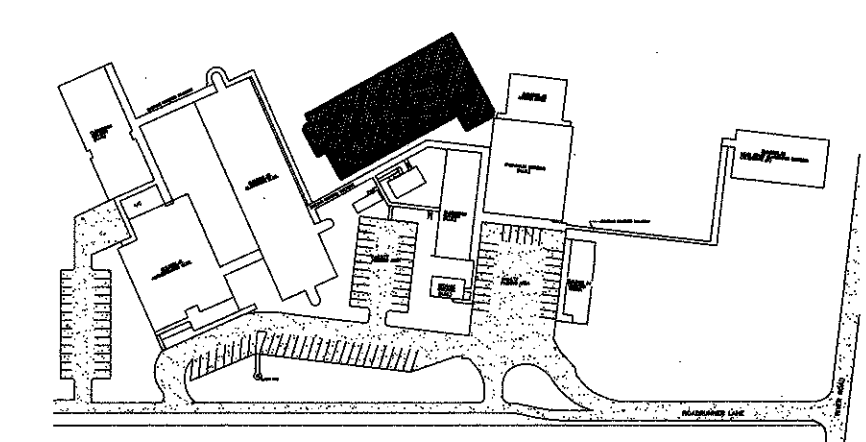
M L K J I H G F E D C B A



- 8" U-BLOCK, 3,000 # CONCRETE FILL WITH 2-#4 RODS CONT.
- ACOUSTICAL CEILING SYSTEM ELEVATION 36.5' Ceiling Height
- BRICK VENEER
- PAINTED CMU BEYOND
- 8" CONCRETE MASONRY UNIT
- BRICK VENEER BEYOND
- STOREFRONT BEYOND
- ELEVATION 26.5' First Floor
- STRUCTURAL STEEL MEMBERS (SEE STRUCTURAL DRAWINGS)
- WOOD BLOCKING
- 5/8" GYPSUM BOARD
- 8" U-BLOCK, 3,000 # CONCRETE FILL WITH 2-#4 RODS CONT.
- HANDRAIL BEYOND
- ELEVATION 22.5' Ceiling Height
- BRICK VENEER
- HANDRAIL / GUARDRAIL TO BE INSTALLED BOTH SIDE OF STAIRS
- 8" CONCRETE MASONRY UNIT
- C6x8.2
- 1/8" CLOSURE PANEL (PERFORATED 1/16" HOLES) UNDERSIDE OF LANDINGS AND STAIRS
- PAINTED CMU BEYOND
- CONCRETE FOUNDATION (SEE STRUCTURAL DRAWINGS)



- GUARDRAIL
- CONCRETE SLAB (SEE STRUCTURAL)
- POUR STOP (SEE STRUCTURAL)
- STRUCTURAL STEEL MEMBER (SEE STRUCTURAL)
- 1-4" STEEL CLOSURE PANEL
- 2x4" METAL TOP TRACK
- 2x4" METAL STUD
- 5/8" GYPSUM BOARD
- GYPSUM BOARD TO GO 12" PAST CEILING
- 24x24" ACOUSTIC CEILING
- 2x4" BOTTOM TRACK



KEY PLAN

MURRAY ARCHITECTS
 131 Ormond Center Court
 Destrehan, LA 70047
 (985) 984-7275
 fax (985) 725-7032

no.	revisions	date
1		
2		
3		
4		
5		
6		

HARRY HURST MIDDLE SCHOOL WING ADDITION
 170 Roadrunner Lane, Destrehan, Louisiana 70047

WALL SECTIONS

seal	project number	drawing number
MICHAEL TABS REG. NO. 8860	1007	A.3.9
date	6.14.2010	
phase	CD	

COPYRIGHT © 2010 BY MURRAY ARCHITECTS. ALL RIGHTS RESERVED. NO PART OF THIS DOCUMENT MAY BE REPRODUCED OR TRANSMITTED IN ANY FORM OR BY ANY MEANS, ELECTRONIC OR MECHANICAL, INCLUDING PHOTOCOPYING, RECORDING, OR BY ANY INFORMATION STORAGE AND RETRIEVAL SYSTEM, WITHOUT THE WRITTEN PERMISSION OF MURRAY ARCHITECTS.

A-1 TYPICAL DETAIL
 1"=1'-0"

A-6 TYPICAL STAIR SECTION
 1/2"=1'-0"

1 2 3 4 5 6 7 8 9 10 11 12 13 14 15 16