

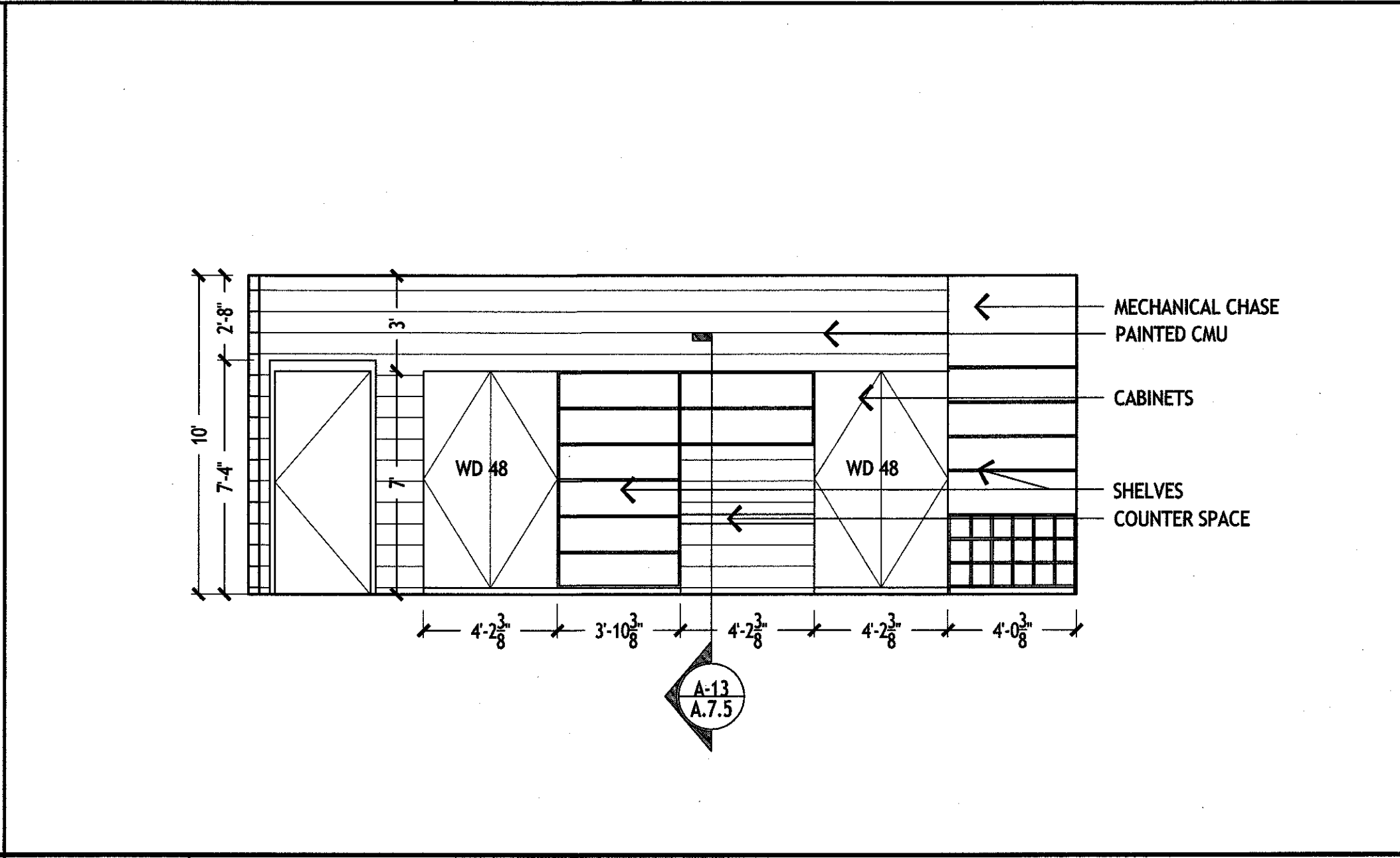
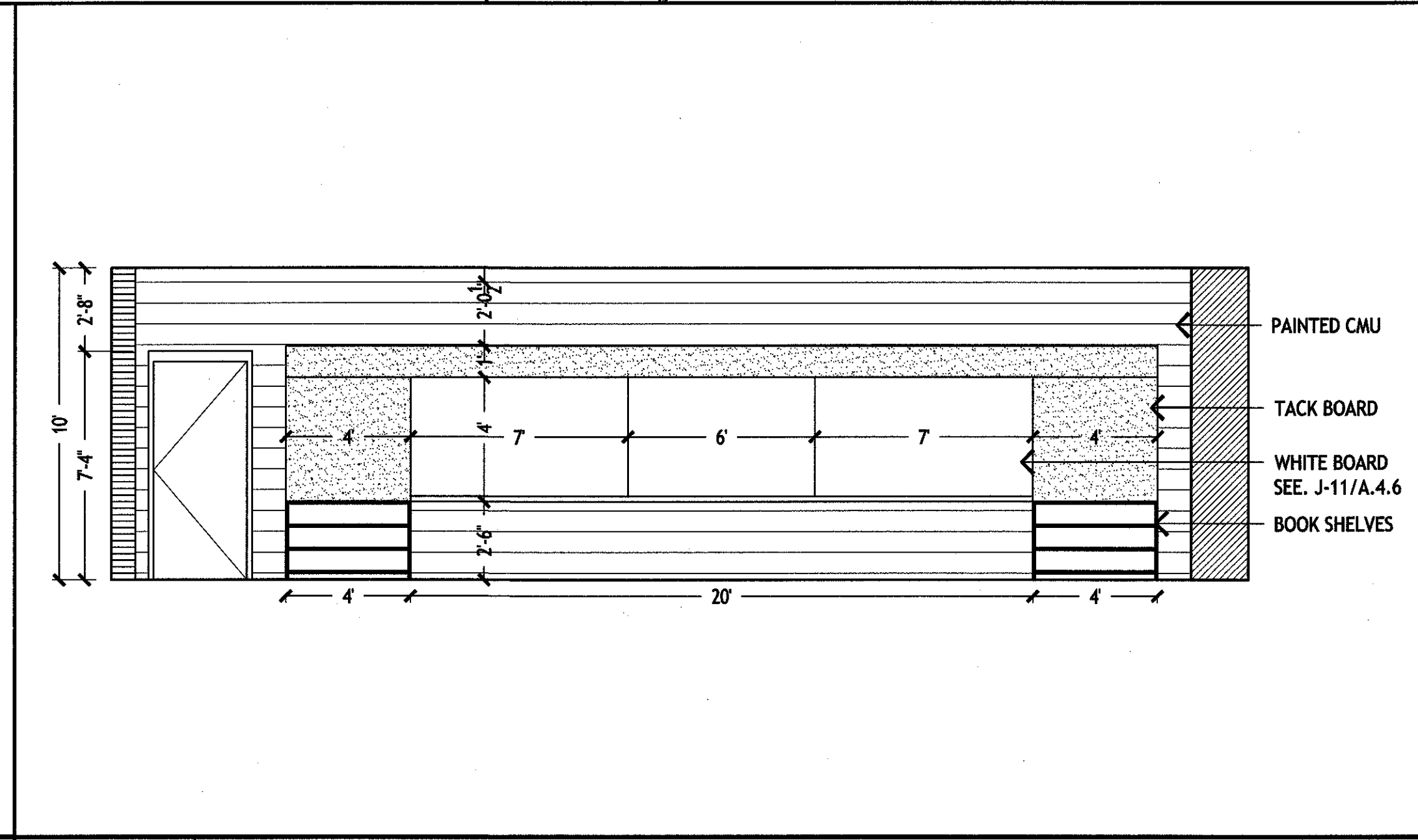
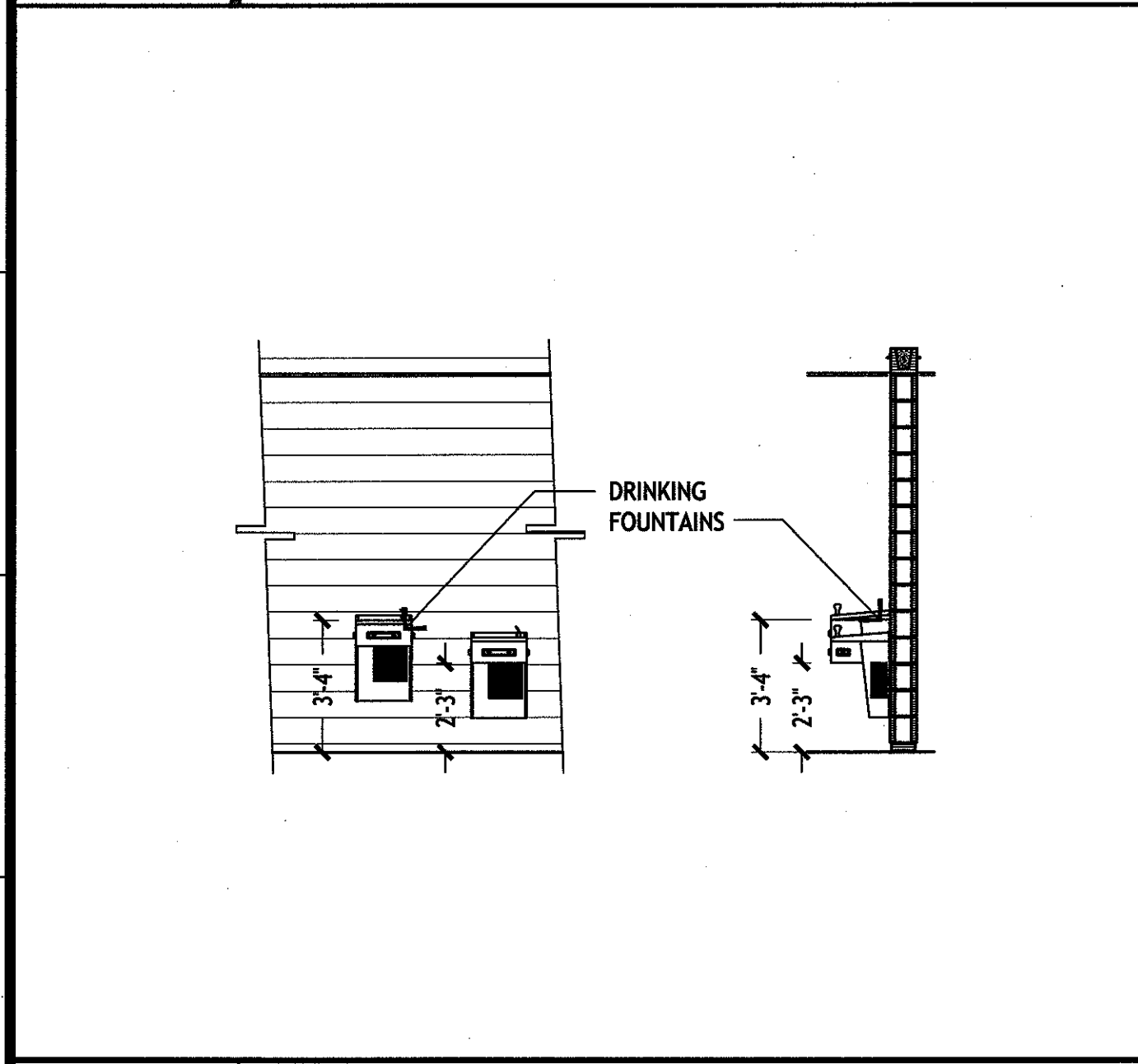
**J-1 SCIENCE LAB ELEVATION**  
1/4"=1'-0"

**J-7 SCIENCE LAB ELAVATION**  
1/4"=1'-0"

**J-13 SCIENCE LAB ELEVATION**  
1/4"=1'-0"

**GENERAL NOTES**

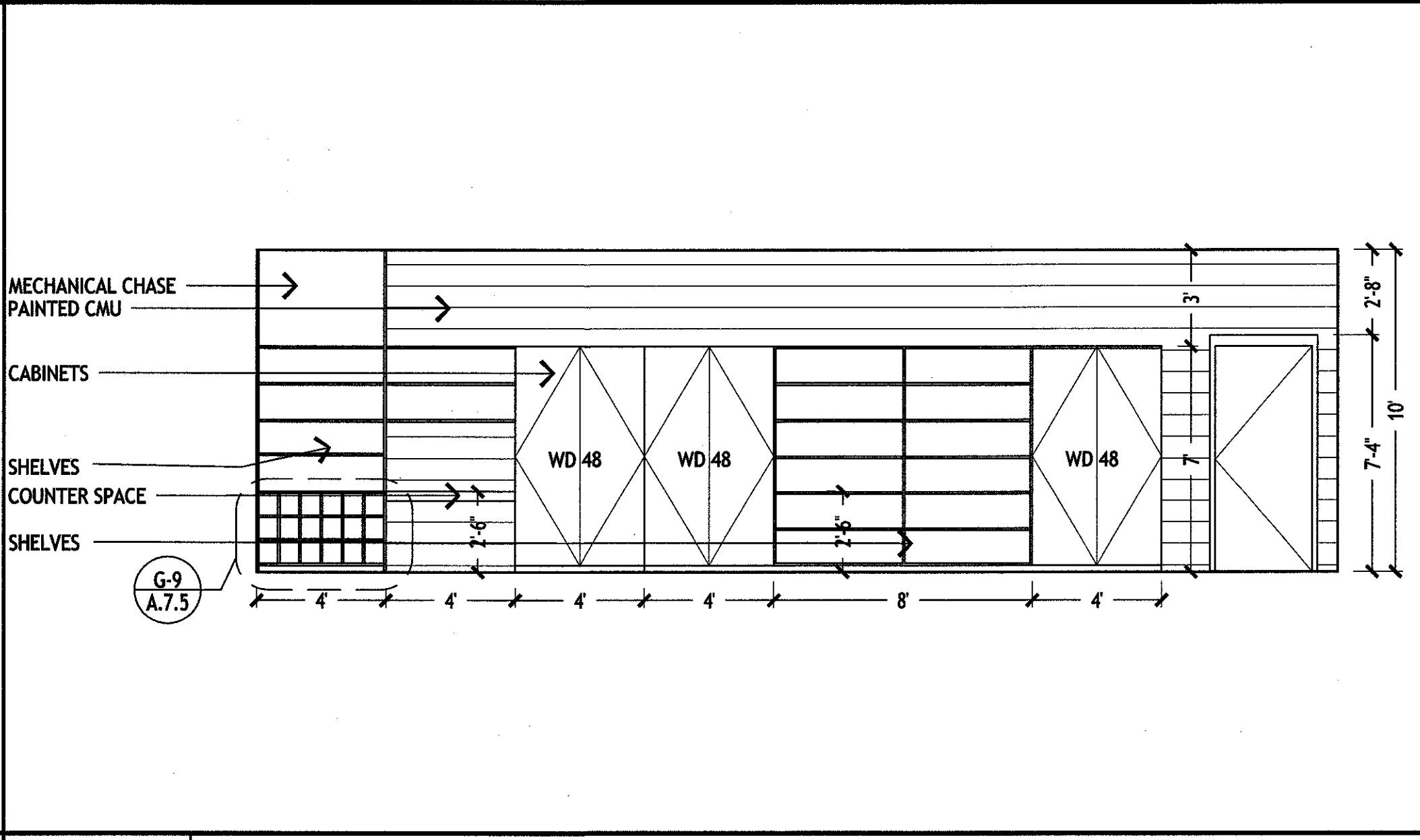
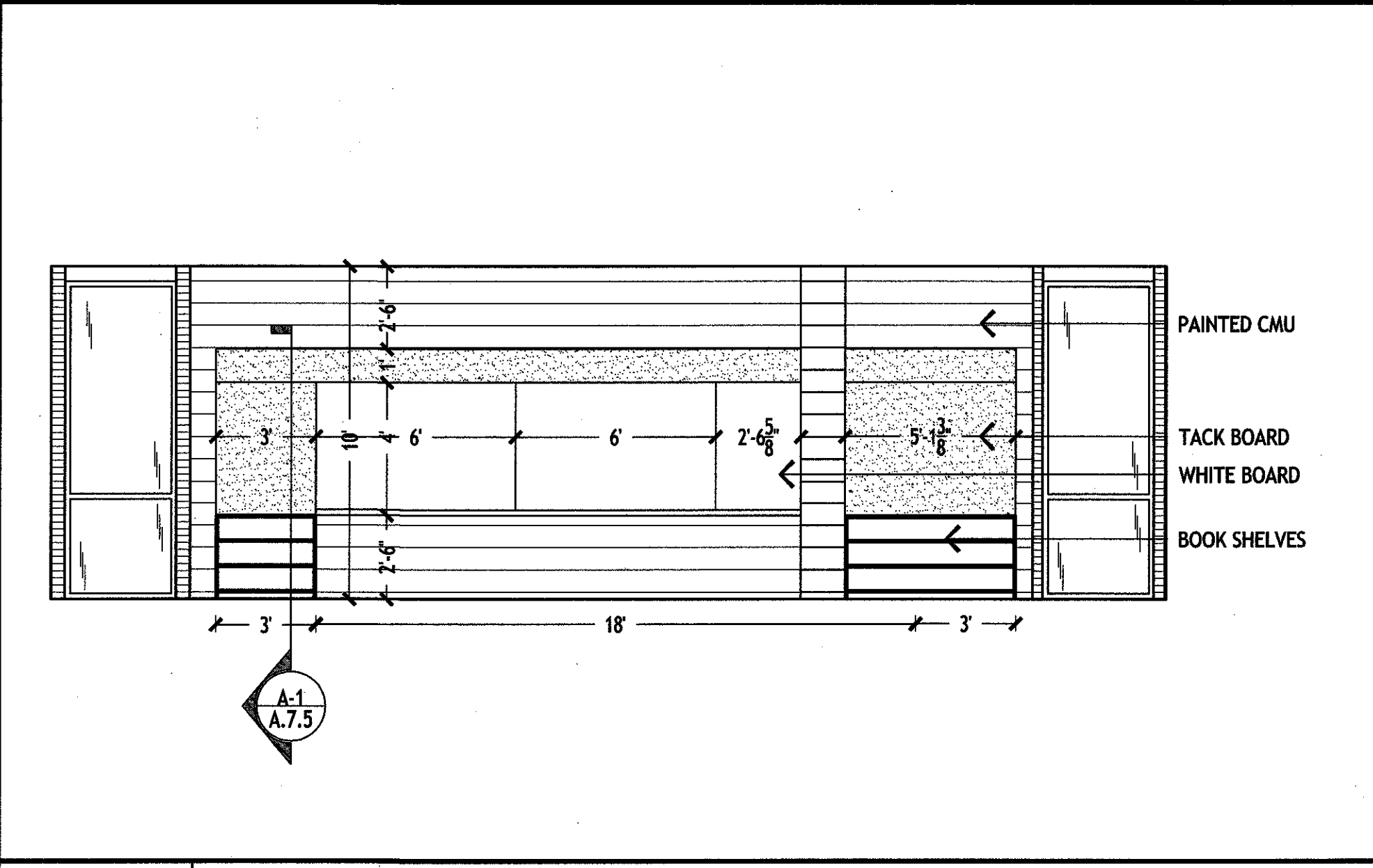
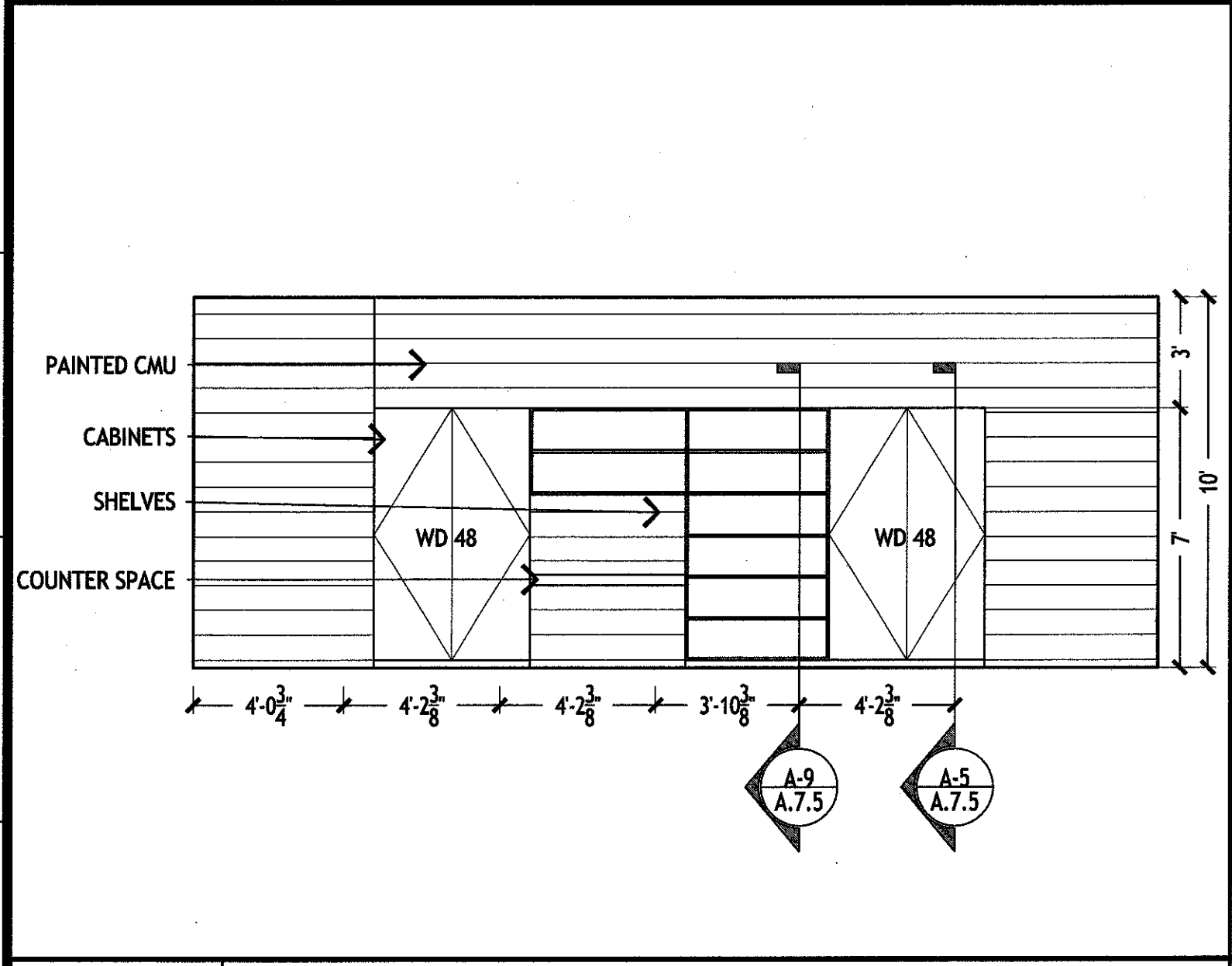
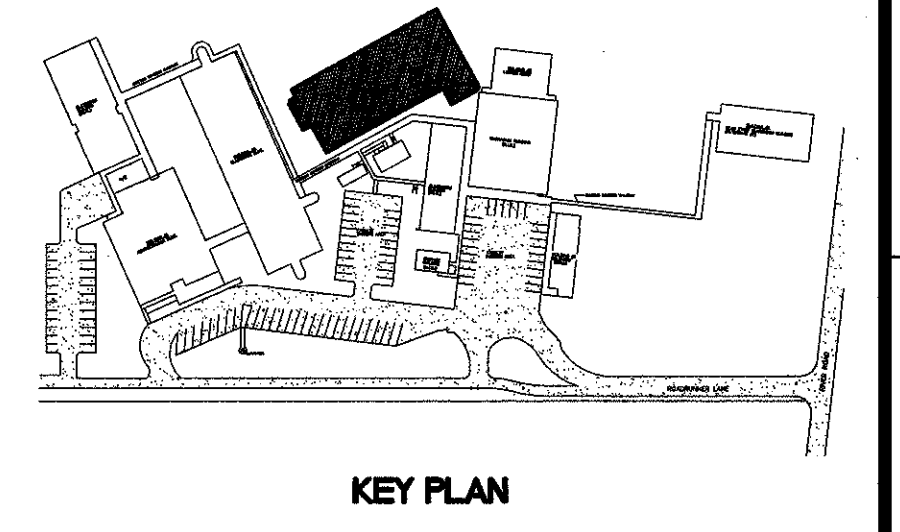
1. ALL FURNITURE SHALL BE PROVIDED AND INSTALLED BY THE OWNER. (UNLESS OTHERWISE SPECIFIED WITHIN THESE DOCUMENTS)



**E-1 DRINKING FOUNTAIN ELEVATION**  
1/4"=1'-0"

**E-5 WHITE BOARD - CLASSROOMS 130, 219,221**  
**WHITE BOARD - CLASSROOMS 101, 201, 203 OPP HAND**  
1/4"=1'-0"

**E-11 CLASSROOM 100, 101, 102, 200, 201, 202, 203**  
**CLASSROOM 127, 128, 129, 130, 131, 204, 218, 219-222 OPP.**  
1/4"=1'-0"



**A-1 CLASSROOM 109**  
1/4"=1'-0"

**A-5 WHITE BOARD - CLASSROOM 211**  
1/4"=1'-0"

**A-11 CLASSROOM 211**  
1/4"=1'-0"

**MURRAY ARCHITECTS**  
133 Leland Center Court  
Bossier City, LA 70604  
(985) 754-7275  
Fax (985) 725-0182

no.	revisions	date
1		
2		
3		
4		
5		
6		

**HARRY HURST MIDDLE SCHOOL WING ADDITION**  
170 Roadrunner Lane, Destrehan, Louisiana 70047  
INTERIOR ELEVATIONS

Michael Tabb  
REG. NO. 8889  
MURRAY ARCHITECTS  
project number 1007  
date 6.14.2010  
phase CD  
drawing number **A.4.4**

THESE DOCUMENTS ARE PROTECTED BY UNITED STATES COPYRIGHT LAW. THEY HAVE BEEN PREPARED SPECIFICALLY FOR THE PROJECT IDENTIFIED AND ARE NOT AVAILABLE FOR USE ON ANY OTHER PROJECT OR IN ANY OTHER LOCATION WITHOUT THE WRITTEN PERMISSION OF MURRAY ARCHITECTS. ALL RIGHTS ARE RESERVED TO MURRAY ARCHITECTS.