

STANDARD ABBREVIATIONS

ACT	ACOUSTICAL CEILING TILE	F.D.	FLOOR DRAIN	PL.	PLASTIC LAMINATE
AD	AREA DRAIN	F.H.	FLAT HEAD	PLAS.	PLASTER
A.F.F.	ABOVE FINISH FLOOR	FDN.	FOUNDATION	PLWD.	PLYWOOD
A.F.G.	ABOVE FINISH GRADE	FIN.	FINISH	Q.T.	QUARRY TILE
ACOUS.	ACOUSTICAL	FLR.	FLOOR	MRF	METAL ROOF FINISH
ADJ.	ADJUSTABLE	FLOUR.	FLUORESCENT	R.B.	RESILIENT BASE
A.F.F.	ABOVE FINISHED FLOOR	FOC.	FACE OF CONC. (MAS.)	R.D.	ROOF DRAIN
A.H.C.	AMBULATORY HANDICAPPED ACCESS	F.E.C.	FIRE EXTINGUISHER	R.O.	ROUGH OPENING
ALUM.	ALUMINUM	CABINET		RAD.	RADIUS
APPROX.	APPROXIMATELY	F.H.C.	FIRE HOSE CABINET	REC.	REFERENCE
ASB.	ASBESTOS	F.R.	FIRE RESISTANCE	R.E.	RECESSED
ATTEN.	ATTENTION	FRM.	FRAME	REINF.	REINFORCED
B	BRICK	FRP	FIBERGLASS REINFORCED	REQD.	REQUIRED
BD.	BOARD	PANEL		RET.	RETAINING
BLDG.	BUILDING	FT.	FOOT	RM.	ROOM
BLK.	BLOCK	G	GLASS	R.O.	ROUGH OPENING
BM.	BEAM	G.I.	GALVANIZED IRON	R.T.	RESILIENT TILE
BOL.	BOLLARD	GA.	GAUGE	S	SEALANT
BOT.	BOTTOM	GALV.	GALVANIZED	S.S.	STAINLESS STEEL
C.	CARPET	GEN.	GENERAL	SCHED.	SCHEDULE
C.B.	CATCH BASIN	GL.	GLASS	SECT.	SECTION
C.G.	CORNER GUARD	GR.	GRANITE	SH	SHUTTER
C.J.	CONTROL JOINT	GYP.	GYPSTUM	SHT.	SHEET
C.M.U.	CONCRETE MASONRY UNIT	GYP. BD.	GYPSTUM BOARD	SIM.	SIMILAR
C.O.	CLEAN OUT	HC	HANDICAPPED	SLOPE	SLOPE
C.R.	COLD ROLLED	H.M.	HOLLOW METAL	SPEC.	SPECIFICATION
CAB.	CABINET	H.R.	HANDRAIL	SQ.	SQUARE
CEM.	CEMENT	HWWD.	HARDWOOD	STD.	STANDARD
CLG.	CEILING	HORIZ.	HORIZONTAL	STL.	STEEL
COL.	COLLUMN	HT.	HEIGHT	STRUCT.	STRUCTURAL
CONC.	CONCRETE	I.D.	INSIDE DIMENSION	SUSP.	SUSPENDED
CONST.	CONSTRUCTION	IN.	INCH	T	TREADS
CONT.	CONTINUOUS	INSUL.	INSULATION	T.&B.	TOP AND BOTTOM
C.T.	CERAMIC TILE	INT.	INTERIOR	TC	TERRA COTTA
DBL.	DOUBLE	INV.	INVERT	T.&G.	TONGUE & GROOVE
DEMO.	DEMOLITION	J.B.	JUNCTION BOX	T.O.C.	TOP OF CONCRETE
DET.	DETAIL	JT.	JOINT	T.O.S.	TOP OF STEEL
DIAM.	DIAMETER	LAV.	LAVATORY	TEL.	TELEPHONE
DIAG.	DIAGONAL	LM	LIMESTONE	TER.	TERRAZZO
DIM.	DIMENSION	L.T.WT.	LIGHT WEIGHT	THRU.	THROUGH
DISP.	DISPENSER	M.H.	MAIN HOLE	TYP.	TYPICAL
DN.	DOWN	MACH.	MACHINE	U.O.N.	UNLESS OTHERWISE
DWG.	DRAWING	MANUF.	MANUFACTURER	NOTED	
EA.	EACH	MAX.	MAXIMUM	UR.	URINAL
EF	EIFS	MECH.	MECHANICAL	V.C.P.	VERIFIED CLAY PIPE
E.J.	EXPANSION JOINT	MET.,MTL.	METAL	V.C.T.	VINYL COMPOSITION
EL.	ELEVATION	MIN.	MINIMUM	V.C.T.	VINYL COMPOSITION
ELECT.	ELECTRICAL	M.T.	METAL THRESHOLD	VERT.	VERTICAL
ENAM.	ENAMEL	N.I.C.	NOT IN CONTRACT	VERT.	VERTICAL
EQ.	EQUAL	NOM.	NOMINAL	W.C.	COVERING
EQUIP.	EQUIPMENT	NTS.	NOT TO SCALE	W	WITH
E.W.	EACH WAY	O.C.	ON CENTER	W.C.	WATER CLOSET
E.W.C.	ELECTRIC WATER COOLER	O.D.	OUTSIDE DIAMETER	W.F.	WIDE FLANGE
EXIST.	EXISTING	OPG.	OPENING	W.P.	WATERPROOF
EXP.	EXPANSION	P.	PAINT	W.W.F.	WELDED WIRE FABRIC
EXT.	EXTERIOR ALUMINUM FRAME	PARTN.	PARTITION	WATER RES.	WATER-RESISTANT
				WD.	WOOD

GENERAL NOTES

- NAMING A CERTAIN BRAND, MAKE OR MANUFACTURER IS TO DESIGNATE THE GENERAL STYLE, TYPE, CHARACTER AND QUALITY STANDARD OF THE PRODUCT DESIRED. SUBSTITUTION REQUESTS MUST BE SUBMITTED PRIOR TO BIDDING. REFER TO SPECIFICATION.
- DO NOT SCALE DRAWINGS. WRITTEN DIMENSIONS GOVERN LOCATIONS AND EXTENT OF MATERIALS. IN CASE OF CONFLICT, NOTIFY ARCHITECT FOR WRITTEN CLARIFICATION PRIOR TO PROCEEDING.
- SEE STRUCTURAL DRAWINGS FOR SIZING ALL OF BUILDING STRUCTURE, MISCELLANEOUS SUPPORTS AND FOUNDATION CONFIGURATION.
- SEE STRUCTURAL DRAWINGS FOR T.O. B.O. H.P. AND L.P. OF ALL STRUCTURAL STEEL, MISCELLANEOUS STEEL AND CONCRETE STRUCTURE.
- AT SPRAY-FIREPROOFED STRUCTURAL STEEL, PROVIDE Z-CLIPS FOR ATTACHMENT TO ALL STUD WORK, MISC. STEEL AS REQUIRED. SEE DETAILS AND STRUCTURAL DRAWINGS.
- SEE PLAN DETAILS AND ELEVATIONS FOR CMU CONTROL JOINTS.
- SEE FINISH PLANS AND FINISH SCHEDULE FOR INTERIOR FINISHES.
- REFER TO SPECIFICATION AND SEE WALL SECTION DETAILS AND PLAN DETAILS FOR BATT INSULATION (PROVIDE AT ALL EXTERIOR STUD PARTITIONS), 0710
- AT CONNECTIONS OF DISSIMILAR METALS (STEEL AND STAINLESS STEEL, ALUMINUM, GALVANIZED, COPPER FLASHING, ETC.), DISSIMILAR METALS SHALL BE ISOLATED FROM ONE ANOTHER.
- ALL METAL PANELS, GLAZED ALUMINUM CURTAIN WALLS, AND OTHER EXTERIOR FINISH SYSTEMS TO BE FABRICATED BASED ON APPROVED SHOP DRAWINGS, FIELD MEASUREMENTS ARE REQUIRED.
- THESE DRAWINGS REPRESENT THE ARCHITECTS INTENT AND INTERPRETATION OF THE APPLICATION OF MATERIALS FOR EXTERIOR FINISHES. IT IS IMPORTANT THAT THESE DRAWINGS BE REVIEWED DIMENSIONALLY AND FUNCTIONALLY WITH RESPECT TO INTERFACING CONDITIONS WITH OTHER MATERIALS AND JOB SITE CONDITIONS BY MANUFACTURER PRIOR TO FABRICATION. GENERAL CONTRACTOR TO NOTIFY ARCHITECT OF ANY DISCREPANCIES IMMEDIATELY, PRIOR TO PROCEEDING.
- ALL DIMENSIONS SHOWN ARE TYPICALLY TO CENTERLINE OF JOINTS AND MULLIONS UNLESS NOTED OTHERWISE ON DRAWINGS.
- SEE GENERAL INFORMATION DRAWINGS FOR EXTENT OF SPRAY FIREPROOFING AT ALL STEEL STRUCTURE.
- WHERE BATT INSULATION IS INDICATED, INSULATION WILL BE FOIL-FACED. WHERE 8" OR 6" STUDS ARE USED, R-19 INSULATION SHALL BE PROVIDED. WHERE 4" OR 3-5/8" STUDS ARE USED, R-13 INSULATION SHALL BE PROVIDED, REFERENCE SPECIFICATION.
- BATT INSULATION SHALL BE PROVIDED AT ALL EXTERIOR STUD WALLS. SEE DRAWINGS AND REFER TO SPECIFICATION FOR ADDITIONAL INFORMATION. ALSO SEE NOTE #17.
- CONTRACTOR TO PROVIDE HORIZONTAL AND VERTICAL BRIDGING AT METAL STUD WALLS AND SOFFITS IN ACCORDANCE WITH SPECIFICATIONS.
- ALL STUD GAUGE SIZE AND SPACING GIVEN ON DRAWINGS ARE MINIMUM REQUIREMENTS. REFER TO SPECIFICATION FOR ADDITIONAL INFORMATION.
- AT EXTERIOR WALL SECTIONS, WALL SECTION DETAILS AND PLAN DETAILS, SEE PLANS AND PARTITIONS TYPES FOR INTERIOR WALL CONSTRUCTION.
- AT ALL INSULATED AND COMPOSITE METAL PANEL VERTICAL TERMINATION, PROVIDE NEOPRENE GASKET AT HORIZONTAL REVEALS TO SEAL JOINT. SEE DRAWINGS AND REFERENCE SPECIFICATION.
- PROVIDE 6"-8" MINIMUM HEAD ROOM CLEARANCE TO ALL STRUCTURAL FRAMING, METAL WORK, PIPING, LIGHTING FIXTURES AND OTHER OVERHEAD BUILDING COMPONENTS AT ALL LOCATIONS WITHIN ALL MEANS OF EGRESS.
- CONTRACTOR SHALL COORDINATE PLACEMENT OF ALL CEILING ELEMENTS WITH MECHANICAL, ELECTRICAL, FIRE PROTECTION WORK AND CEILING INSTALLER. WHERE DISCREPANCIES EXIST, REVIEW WITH ARCHITECT.
- WHERE NOTED ON THE DRAWINGS OR SPECIFICATIONS THE CONTRACTOR SHALL PROVIDE A FINISHED MOCK-UP OF THE APPROXIMATE AREA FOR ARCHITECTS REVIEW.
- PROVIDE ACCESS PANELS AS REQUIRED BY APPLICABLE CODES. ALL ACCESS SHALL BE COORDINATED WITH THE DIFFERENT TRADES AND SHOP DRAWINGS PREPARED FOR ARCHITECT APPROVAL.

26) UNLESS AGREED BY ARCHITECT, ALL FASTENERS AND FASTENING DEVICES ARE TO BE CONCEALED IN ALL FINISHED SPACES.

27) CONTRACTOR TO COORDINATE ALL MECH., ELEC., PLUMBING AND FIRE PROTECTION FLOOR AND WALL SLEEVES AND ALL MECHANICAL SHAFTS WITH MECH., ELEC., PLUMBING, FIRE PROTECTION, STRUCTURAL AND ARCHITECTONIC DRAWINGS.

FIRE RATING:

- ALL FIRE RATINGS INDICATED ARE TO COMPLY WITH UNDERWRITERS LABORATORIES TEST RATINGS AND SHALL COMPLY WITH THE BUILDING CODE.
- WHERE TWO SPACES REQUIRING RATINGS ARE ADJACENTS, THE HIGHER RATING SHALL GOVERN.
- WHERE THE FIRE RATING OF ENCLOSURE WALLS ARE NOTED ON THE DRAWINGS, THE FIRE RATING SHALL APPLY TO THE ENTIRE PERIMETER ENCLOSURE OF THE ROOM-SPACE FOR THE FULL LENGTH AND HEIGHT OF AREA BEING SEPARATED.

4) SPACE BETWEEN SLAB EDGE AND EXTERIOR WALL AND ALL OPENINGS IN THE FLOOR SLAB AND/OR RATED WALLS, INCLUDING SPACES BETWEEN DUCTS, CONDUITS, PIPING, ETC. (EXCEPT WHEN COMPLETELY ENCLOSED BY FIRE RATED CONSTRUCTION SHALL BE FIRE STOPPED (SEALED) WITH APPROVED FIRE STOP MATERIAL TO MAINTAIN FIRE RATING CONTINUITY OF THE FLOOR OR WALL CONSTRUCTION, AND SHALL BE TIGHT TO PREVENT THE PASSAGE OF SMOKE AND FLAME.

FIREPROOFING:

- PROVIDE FIREPROOFING ON STRUCTURAL STEEL FRAMING MEMBERS WITH THICKNESS AND DENSITY TO OBTAIN THE FIRE ENDURANCE RATING FOR THE APPLICATION INDICATED ON THE DRAWINGS.
- FIREPROOFING MATERIALS SHALL NOT CONTAIN ASBESTOS FIBERS OR DUST PARTICLES, NOR OTHER SUBSTANCE PROHIBITED BY LAW.

DIMENSIONS:

- DIMENSIONS SHALL GOVERN. DO NOT SCALE DRAWINGS. THE CONTRACTOR SHALL NOTIFY THE ARCHITECT IN WRITING OF ANY DISCREPANCIES, OMISSIONS, AND/OR CONFLICTS.
- UNLESS NOTED OTHERWISE, ALL STAIRS, ELEVATORS, SHAFTS, AND MECHANICAL SHAFTS ARE DIMENSIONED TO THEIR CLEAR INSIDE OPENINGS.

PARTITION NOTES:

- INTERIOR WALL DESIGN PRESSURE:

WALL TYPE	DESIGN LOAD
SHAFT WALL	10 P.S.F.
ALL OTHER INTERIOR PARTITIONS	5 P.S.F.

- ALL PARTITIONS, UNLESS NOTED OTHERWISE, SHALL EXTEND TO THE UNDERSIDE OF THE STRUCTURAL DECK AND FRAMING SYSTEM ABOVE.
- SAMPLES: THE COLOR, CHARACTER, QUALITY AND RANGE OF ALL UNIT MASONRY TO MATCH ARCHITECTS SAMPLES OF QUALITY AND COLOR RANGE (SEE SPEC.)
- VISUAL MOCK-UP: PROVIDE A VISUAL MOCK-UP OF THOSE AREAS SHOWN ON THE DRAWING SAND SPECIFIED IN THE SPECIFICATIONS.

INTERIOR GASKETS, SEALANTS & PRIMERS PERFORMANCE CRITERIA:

- ALL SEALANT JOINTS SHALL BE SIZED SUCH AS THEY WILL BE WITHIN THE MIN./MAX. SIZE AS RECOMMENDED BY THE MANUFACTURER.
- ALL SEALANT JOINTS SHALL MAINTAIN CONTACT WITH THE ADJOINING PARTS WITHIN ALLOWABLE DIMENSIONAL CHANGES IN THE JOINT SIZE. ALL SEALANT JOINTS SHALL MAINTAIN DURABILITY AND INTEGRITY UNDER ALL CONDITIONS.
- ALL SEALANT SHALL BE INSTALLED WITH APPROPRIATED BACK-UP ROD AND TOOLED AS PER MANUFACTURERS RECOMMENDATIONS.
- THE COLOR OF SEALANT EXPOSED TO VIEW SHALL BE AS SELECTED BY THE ARCHITECT.

MISCELLANEOUS NOTES:

- ALL EXTERIOR JOINTS AROUND WINDOWS AND DOOR FRAMES, BETWEEN WALLS AND FOUNDATION, BETWEEN WALLS AND ROOF, AND AT PENETRATION OF MECHANICAL, ELECTRICAL WALL SHALL BE SEALED OR WEATHER STRIPPED TO PREVENT AIR LEAKAGE AND WATER PENETRATION.

DRAWING INDEX

- ARCHITECTURAL**
- G.0.0 - TITLE SHEET
 - G.0.1 - ABBREVIATIONS, CODE ISSUES, SHEET INDEX, ETC.
 - C.0.1 - DEMOLITION AND EROSION CONTROL PLAN
 - C.1.0 - SITE PLAN AND GENERAL NOTES
 - C.1.1 - GRADING PLAN
 - C.1.2 - DRAINAGE PLAN
 - C.1.3 - UTILITIES PLAN
 - C.1.4 - PAVING PLAN
 - C.2.0 - DRAINAGE DETAILS
 - C.2.1 - COMPOSITE SITE PLAN
 - A.0.1 - COMPOSITE SITE PLAN
 - A.0.2 - CANOPY AND SIDEWALK PLAN
 - A.0.3 - CANOPY AND SIDEWALK PLAN
 - A.0.4 - CANOPY DETAILS
 - A.1.0 - FIRST FLOOR PLAN
 - A.1.1 - SECOND FLOOR PLAN
 - A.1.2 - MEZZANINE PLAN
 - A.1.3 - DETAILED RESTROOM PLANS
 - A.1.4 - DETAILED RESTROOM AND STAIR PLANS
 - A.1.5 - DETAILED CLASSROOM PLANS
 - A.2.0 - EXTERIOR ELEVATIONS
 - A.2.1 - EXTERIOR ELEVATIONS
 - A.2.2 - EXTERIOR ELEVATIONS
 - A.3.0 - CROSS SECTION
 - A.3.1 - CROSS SECTION
 - A.3.2 - WALL SECTIONS
 - A.3.3 - WALL SECTIONS
 - A.3.4 - WALL SECTIONS
 - A.3.5 - WALL SECTIONS
 - A.3.6 - WALL SECTIONS
 - A.3.7 - WALL SECTIONS
 - A.3.8 - WALL SECTIONS
 - A.3.9 - WALL SECTIONS
 - A.3.10 - WALL SECTIONS
 - A.3.11 - WALL SECTIONS
 - A.4.0 - FINISH SCHEDULE
 - A.4.1 - DOOR SCHEDULE
 - A.4.2 - WINDOW SCHEDULE
 - A.4.3 - INTERIOR ELEVATIONS
 - A.4.4 - INTERIOR ELEVATIONS
 - A.4.5 - INTERIOR ELEVATIONS
 - A.4.6 - INTERIOR ELEVATIONS
 - A.4.7 - DOOR AND WINDOW ELEVATIONS
 - A.5.0 - ROOF PLAN
 - A.5.1 - ROOF DETAILS
 - A.6.0 - FIRST FLOOR REFLECTED CEILING PLAN
 - A.6.1 - SECOND FLOOR REFLECTED CEILING PLAN
 - A.7.0 - DOOR AND WINDOW DETAILS
 - A.7.1 - DOOR AND WINDOW DETAILS
 - A.7.2 - DOOR AND WINDOW DETAILS
 - A.7.3 - CONSTRUCTION DETAILS
 - A.7.4 - CONSTRUCTION DETAILS
 - A.7.5 - CONSTRUCTION DETAILS
 - A.7.6 - SIGNAGE DETAILS & SCHEDULE
 - A.7.7 - SIGNAGE DETAILS & SCHEDULE

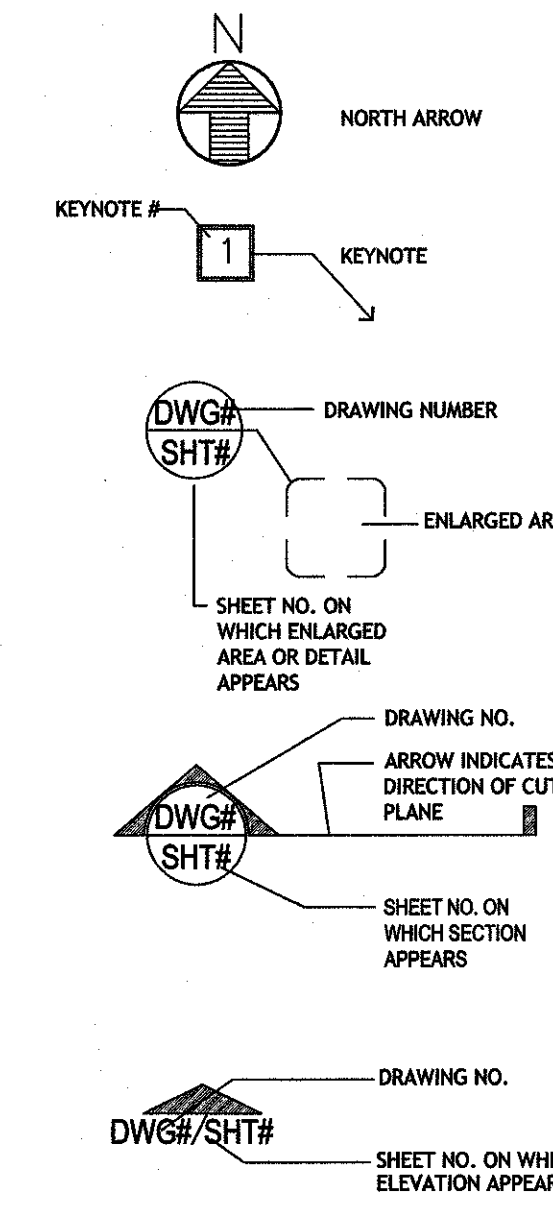
- MECHANICAL**
- M0.00 - SHEET INDEX, LEGEND AND GENERAL NOTES
 - M0.01 - SCHEDULES
 - M0.02 - SCHEDULES
 - M0.03 - AUTOMATIC TEMPERATURE CONTROLS/EMCS WIRING DIAGRAMS
 - M0.04 - AUTOMATIC TEMPERATURE CONTROLS/EMCS WIRING DIAGRAMS
 - M2.00 - FIRST FLOOR MECHANICAL PLAN
 - M2.01 - SECOND FLOOR MECHANICAL PLAN
 - M2.02 - MEZZANINE MECHANICAL PLAN
 - M3.00 - FIRST FLOOR MECHANICAL PIPING PLAN
 - M3.01 - SECOND FLOOR MECHANICAL PIPING PLAN
 - M3.02 - MEZZANINE MECHANICAL PIPING PLAN
 - M5.00 - CHILLED WATER AND HOT WATER FLOW DIAGRAMS
 - M6.00 - DETAILS
 - M6.01 - DETAILS
 - M6.02 - DETAILS
- PLUMBING**
- P0.00 - SHEET INDEX, LEGEND AND GENERAL NOTES
 - P0.01 - SCHEDULES AND NOTES
 - P1.00 - SITE PLUMBING PLAN
 - P2.00 - FIRST FLOOR PLUMBING PLAN
 - P2.01 - SECOND FLOOR PLUMBING PLAN
 - P2.02 - MEZZANINE PLUMBING PLAN
 - P3.00 - ENLARGED PLUMBING PLAN
 - P5.00 - DETAILS
 - P5.01 - DETAILS
- FIRE PREVENTION**
- FP0.00 - SHEET INDEX, LEGEND, AND GENERAL NOTES
 - FP2.00 - FIRST FLOOR FIRE PROTECTION PLAN
 - FP2.01 - SECOND FLOOR FIRE PROTECTION PLAN
 - FP2.02 - MEZZANINE FIRE SPRINKLER PLAN
- ELECTRICAL**
- E0.00 - LEGEND, SHEET INDEX AND FIXTURE SCHEDULE
 - E1.00 - SITE ELECTRICAL PLAN
 - E1.01 - CANOPY LIGHTING PLAN
 - E1.02 - INTERIOR LIGHTING PLAN
 - E1.03 - SECOND FLOOR LIGHTING PLAN
 - E1.04 - MEZZANINE LIGHTING PLAN
 - E2.00 - FIRST FLOOR POWER PLAN
 - E2.01 - SECOND FLOOR POWER PLAN
 - E2.02 - MEZZANINE POWER PLAN
 - E3.00 - FIRST FLOOR SPECIAL SYSTEMS PLAN
 - E3.01 - SECOND FLOOR SPECIAL SYSTEMS PLAN
 - E3.02 - ATTIC SPECIAL SYSTEMS PLAN
 - E4.00 - ENLARGED PLANS AND DETAILS
 - E4.01 - DIAGRAMS AND DETAILS
 - E4.02 - DIAGRAMS AND DETAILS
 - E4.03 - DIAGRAMS AND DETAILS
 - E5.00 - SINGLE LINE DIAGRAM AND SCHEDULES
 - E6.00 - PANEL SCHEDULES

- STRUCTURAL**
- S.0.1 - GENERAL NOTES AND TYPICAL DETAILS
 - S.0.2 - SCHEDULES AND DETAILS
 - S.0.3 - TYPICAL DETAILS
 - S.1.0 - FOUNDATION AND FIRST FLOOR FRAMING PLAN
 - S.1.1 - SECOND FLOOR FRAMING PLAN
 - S.1.2 - ATTIC FRAMING PLAN
 - S.1.3 - ROOF FRAMING PLAN
 - S.2.0 - FOUNDATION SECTIONS AND FIRST FLOOR SECTIONS AND DETAILS
 - S.3.0 - FLOOR SECTIONS AND DETAILS
 - S.3.1 - FLOOR SECTIONS AND DETAILS
 - S.3.2 - FLOOR SECTIONS AND DETAILS
 - S.4.0 - ROOF SECTIONS AND DETAILS
 - S.5.0 - COLUMN SCHEDULE
 - S.6.1 - SCHEDULES AND DETAILS

IBC CODE ANALYSIS

- DESIGN LOADS**
- FLOOR LOAD [IBC TABLE 1607.1] 125 PSF
 - ROOF LIVE LOAD [IBC TABLE 1607.1] 20 PSF
 - DESIGN WIND LOAD [IBC FIGURE 1609/ASCE 7-05 FIGURE 6-1] 130 MPH CATEGORY B
 - WIND EXPOSURE [IBC SECTION 1609.4.3] 0
 - GROUND SNOW LOAD [IBC FIGURE 1608.2] 0
 - WIND IMPORTANCE FACTOR [ASCE TABLE 6-1] 1.0
 - WIND DIRECTION ALL CASES
 - INTERNAL PRESSURE COEFFICIENT [ASCE 7-05 FIGURE 6-5] + / - 18
 - COMPONENT AND CLADDING DESIGN
 - ROOF 76.80 PSF
 - WALL 40.70 PSF
 - OVERLAY 72.10 PSF
 - FLOOD ZONE ZONE X
- SEPARATION REQUIREMENTS:
 - A. OCCUPANCY SEPARATION: 2 HOUR PROVIDED NONE REQUIRED.
 - EXISTING REQUIREMENTS:
 - A. NUMBER OF EXITS:
 - 0-50 OCCUPANTS, 1 EXIT
 - 51-500 OCCUPANTS, 2 EXITS
 - 501-1000 OCCUPANTS, 3 EXITS
 - EXIT WIDTHS:
 - A. MINIMUM EXIT WIDTH FOR CORRIDOR STAIRS: 48"
 - B. MINIMUM CORRIDOR WIDTH: 4'-6"
 - OPENING PROTECTION:
 - A. ALL GLAZING SHALL BE IMPACT-RESISTANT
 - INSULATION:
 - A. CONCEALED AND EXPOSED INSULATION SHALL HAVE FLAME SMOKE SPREAD OF 0-25
 - B. CONCEALED AND EXPOSED INSULATION SHALL HAVE SMOKE DEVELOPMENT OF 0-450
 - CEILING AND WALL FINISH:
 - A. INTERIOR WALL FINISHED SHALL HAVE A FLAME SMOKE OF 0-200 AND A SMOKE DEVELOPMENT RATING OF 0-450
 - B. INTERIOR CEILING FINISHED SHALL HAVE A FLAME SMOKE OF 0-200 AND A SMOKE DEVELOPMENT RATING OF 0-450
 - FLOOD DESIGN DATA:
 - A. LOWEST FINISH FLOOR ELEVATION: 12.50'
 - B. FLOOD ZONE: X
 - C. DESIGN FLOOD ELEVATION: n/a

GRAPHICS LEGEND



PROJECT SUMMARY

PROJECT NAME: HARRY HURST MIDDLE SCHOOL WING ADDITION

ADDRESS: 170 ROAD RUNNER LANE, DESTREHAN, LOUISIANA 70047

PROPOSED USE: EDUCATIONAL/SOCIAL

TOTAL BUILDING SQUARE FOOTAGE: 40,970 SF

APPLICABLE CODES

BUILDING CODE	IBC, 2006	LIFE SAFETY CODE	NFPA 101, 2009
MECHANICAL CODE	IMC, 2006	ACCESSIBILITY CODE	ADA-AG, 1994
PLUMBING CODE	LSPC, 2000	ENERGY CODE	ASHRAE 90.1
ELECTRICAL CODE	NEC, '05	SIGN CODE	ANSI A117.1, 2003.3
FIRE CODE	NFPA, 101		

HEALTH DEPARTMENT, DEPT OF HEALTH AND HOSPITALS

BUILDING PLANNING

OCCUPANCY: EDUCATIONAL

MIXED OCCUPANCY: NO. REQD FIRE SEPARATION: N/A

TYPE OF CONSTRUCTION

CONSTRUCTION TYPE: TYPE II

FIRE PROTECTION SYSTEMS

FIRE DETECTION REQUIREMENTS:

FIRE EXTINGUISHING REQUIREMENTS

YES AUTOMATIC SPRINKLERS

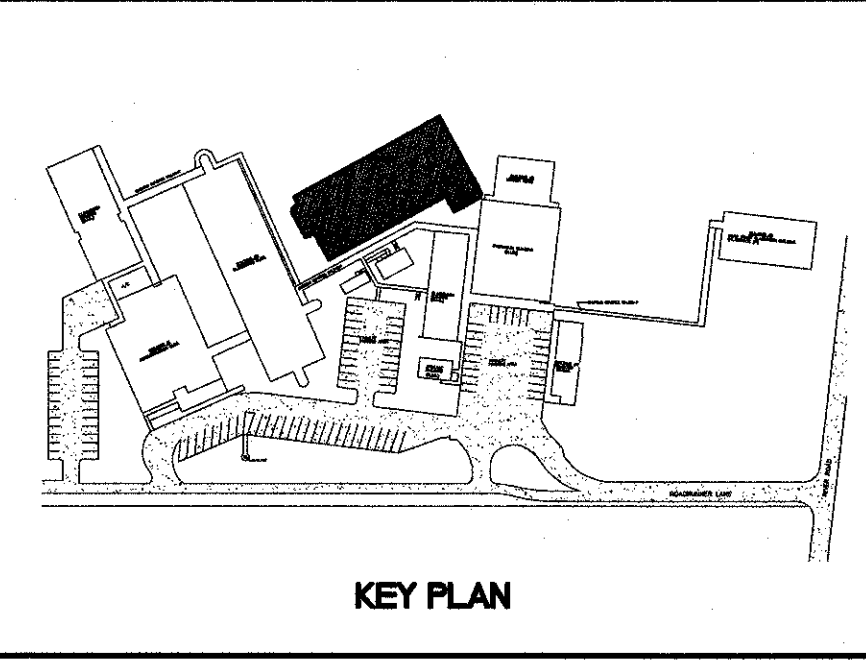
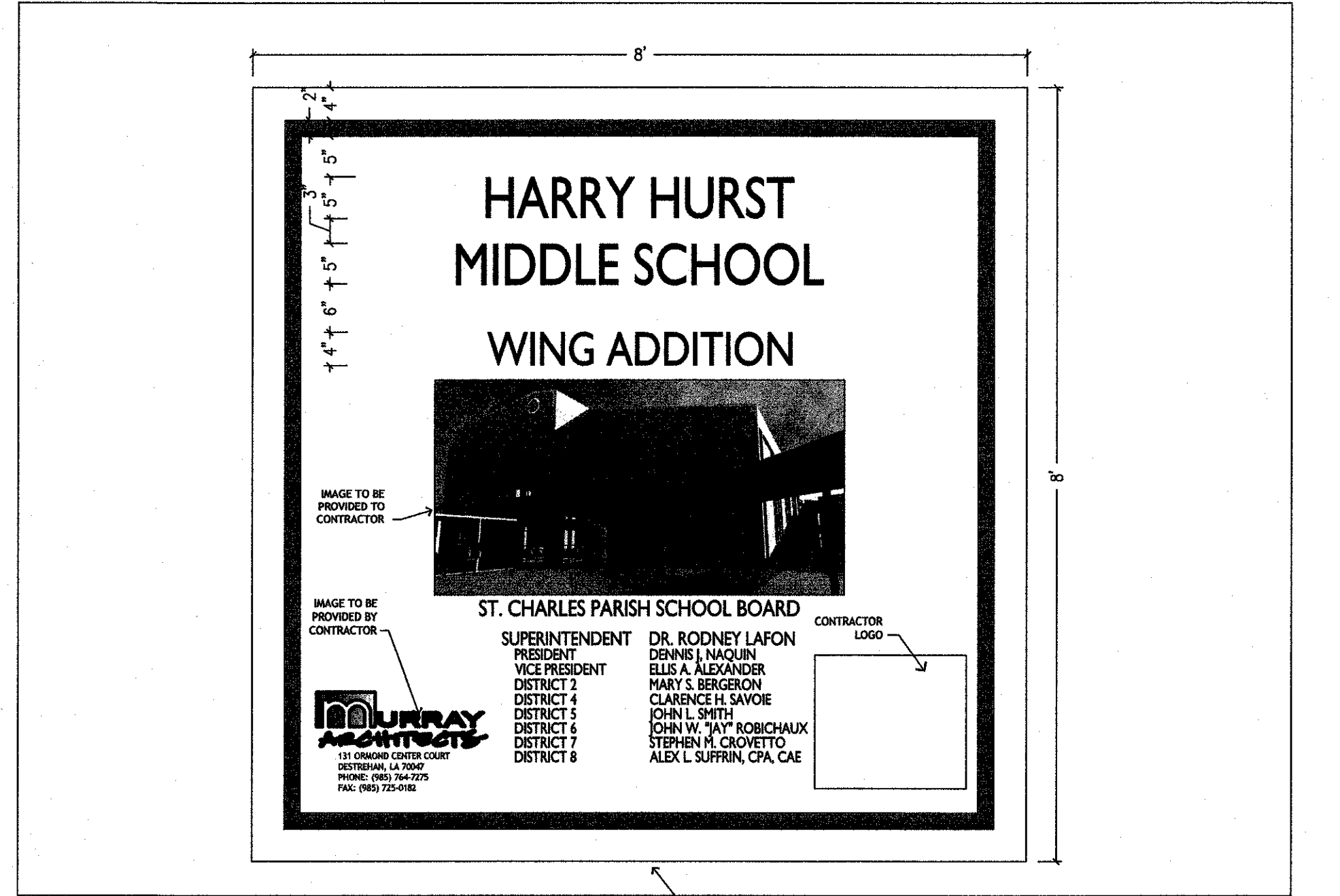
YES MANUAL EXTINGUISHERS

ORDINARY OCCUPANCY HAZARD (LOW, ORDINARY, HIGH)

5,625 SF MAX. FLOOR AREA PER EXTINGUISHER

75' MAX TRAVEL DISTANCE TO EXTINGUISHER

TEMPORARY PROJECT SIGN



MURRAY ARCHITECTS

131 Ormond Center Court
Destrehan, LA 70047
(504) 725-0187
fax (504) 725-0182

no.	revisions	date
1		
2		
3		
4		
5		
6		

HARRY HURST MIDDLE SCHOOL WING ADDITION

170 Roadrunner Lane, Destrehan, Louisiana 70047

ABBREVIATIONS, CODE ISSUES, SHEET INDEX, ETC.

drawing number: 1007

project number: 1007

date: 6.14.2010

phase: CD

G.0.1

THESE DOCUMENTS ARE PROTECTED BY UNITED STATES COPYRIGHT LAW. THEY HAVE BEEN PREPARED SPECIFICALLY FOR YOUR PROJECT AND ARE NOT TO BE REPRODUCED OR TRANSMITTED IN ANY FORM OR BY ANY MEANS, ELECTRONIC OR MECHANICAL, INCLUDING PHOTOCOPYING, RECORDING, OR BY ANY INFORMATION STORAGE AND RETRIEVAL SYSTEM, WITHOUT THE EXPRESS WRITTEN APPROVAL AND PARTICIPATION OF MURRAY ARCHITECTS. REPRODUCTION OF THESE DOCUMENTS MUST BE AUTHORIZED BY THE ARCHITECT. ALL RIGHTS ARE RESERVED TO MURRAY ARCHITECTS.