

1 GENERAL NOTES
C.1.0

CIVIL GENERAL NOTES

1. DIMENSIONS AND CONDITIONS TYING INTO OR GOVERNED BY EXISTING CONSTRUCTION ARE APPROXIMATE AND ARE NOT PURPORTED TO BE CORRECT. VERIFY EXISTENCE AND LOCATION OF ALL SURFACE AND SUBSURFACE STRUCTURES, UTILITIES, DEPTHS AND INVERTS PRIOR TO COMMENCING WORK. NOTIFY THE ARCHITECT IF CONDITIONS VARY FROM THOSE SHOWN.
2. ELEVATIONS ARE IN FEET, NAVD 88 DATUM.
3. OBTAIN AND PAY FOR INSPECTIONS, LICENSES, PERMITS AND APPROVALS REQUIRED BY GOVERNING AUTHORITIES AND INSTALL ALL WORK IN COMPLIANCE THEREOF.
4. DRAIN, SEWER AND WATER LINES ARE SHOWN IN SCHEMATIC DETAIL ONLY. IT IS NOT POSSIBLE TO DETAIL EVERY OFFSET, ELBOW, TEE, WYE, ETC., THAT MAY BE REQUIRED. PROVIDE COMPLETE WORKING UTILITY SYSTEMS.
5. SEE ARCHITECTURAL AND PLUMBING DRAWINGS FOR CONTINUATION OF UTILITIES WITHIN 5'-0" OF BUILDINGS.
6. WHERE NOTED, REFERENCED STANDARD SPECIFICATION SHALL PER ST. CHARLES PARISH STANDARDS, LATEST EDITION, OR THE LOUISIANA DOTD STANDARD SPECIFICATIONS FOR ROADS AND BRIDGES, 2000 EDITION, WHICHEVER IS THE MORE STRINGENT.
7. PROVIDE CONSTRUCTION ZONE TRAFFIC CONTROL PER LOUISIANA DOTD STANDARD PLANS.

DRAINAGE

1. PROVIDE DRAINAGE STRUCTURES AS SHOWN ON THE PLANS AND IN ACCORDANCE WITH THE LATEST STANDARDS OF ST. CHARLES PARISH.
2. ROUND PIPE 12" OR LARGER IN DIAMETER SHALL BE REINFORCED CONCRETE PIPE CONFORMING TO ASTM C76, CLASS III, WALL "B" UNLESS SPECIFIED.
3. ROUND PIPE 10" OR SMALLER IN DIAMETER SHALL BE PVC CONFORMING TO ASTM D3034 SDR 35.
4. JOINTS SHALL BE TYPE 2 WITH RUBBER GASKETS CONFORMING TO ASTM C443.

EARTHWORK

1. EXCAVATION SHALL INCLUDE THE REMOVAL OF MATERIAL ENCOUNTERED TO SUBGRADE ELEVATIONS INDICATED AND SUBSEQUENT DISPOSAL OF MATERIALS REMOVED.
2. PROFFROLL SUBGRADE TO IDENTIFY WEAK AREAS. EXCAVATE WEAK AREAS AND BACKFILL WITH SELECT FILL.
3. SELECT FILL SHALL BE LOCALLY AVAILABLE "PUMPED" SAND, FREE OF ROOTS, CLAY LUMPS, AND OTHER DELETERIOUS MATERIALS WITH NO MORE THAN 10% BY WEIGHT OF MATERIAL PASSING A U.S. STANDARD NO. 200 SIEVE.
4. COMPACT SELECT FILL TO AT LEAST 95% (-1%, +3%) OF ITS MAXIMUM DRY DENSITY NEAR OPTIMUM WATER CONTENT IN ACCORDANCE WITH ASTM D698 (STANDARD PROCTOR). FILL MATERIAL SHALL BE PLACED IN "LIFTS" NOT EXCEEDING EIGHT (8) INCHES.
5. ALL CLEARING, FILLING, AND COMPACTION OPERATIONS SHALL BE ACCOMPLISHED DURING PERIODS OF DRY WEATHER ONLY. DUE CONSIDERATION SHOULD BE GIVEN TO THE "SITE CONDITIONS" IN DETERMINING WHEN TO CONTINUE WORK FOLLOWING RAIN EVENTS.

PORTLAND CEMENT CONCRETE AND ASPHALT PAVING

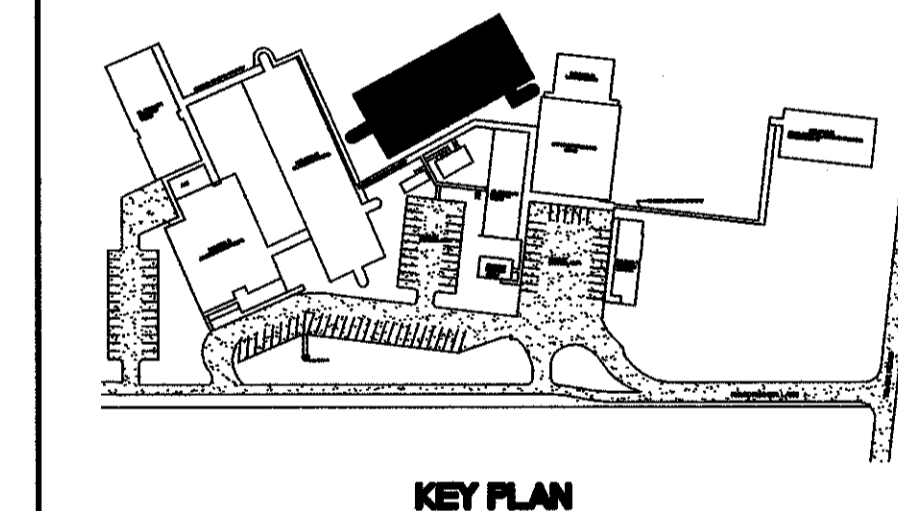
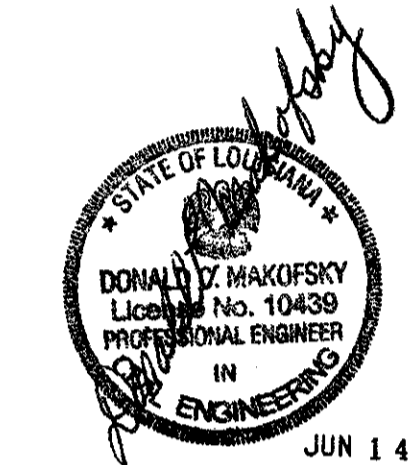
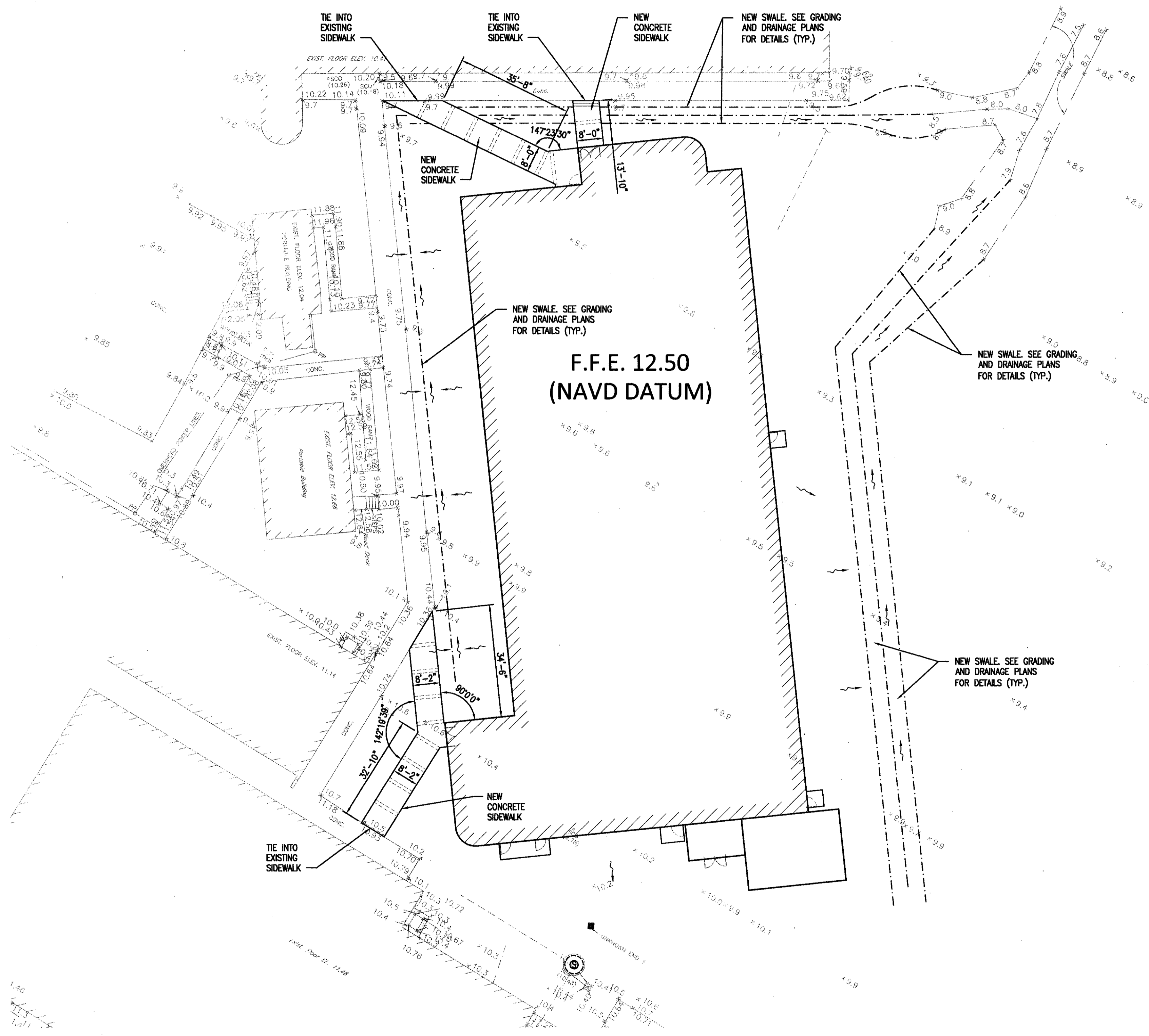
1. WHERE NEW PAVING IS TO MEET EXISTING, PROVIDE A SAW CUT TO INSURE A STRAIGHT JOINT. SAW CUT A MINIMUM 1-1/2" DEEP. BREAK THE REMAINDER OF CONCRETE BY CONVENTIONAL MEANS WITHOUT DAMAGING CONCRETE TO REMAIN.
2. PROVIDE ENGINEERING FABRIC IN ACCORDANCE WITH SECTION C501.12 OF THE STANDARD SPECIFICATIONS. (MIRAFI 60X IS ACCEPTABLE)
3. COARSE AGGREGATE BASE MATERIAL SHALL BE RECYCLED PORTLAND CEMENT CONCRETE OR STONE CONFORMING TO STANDARD SPECIFICATION SECTION 302. COMPACT BASE TO 95% OF MAXIMUM DRY DENSITY NEAR OPTIMUM WATER CONTENT.
4. PORTLAND CEMENT CONCRETE PAVEMENT SHALL CONFORM TO SECTION C601 OF THE STANDARD SPECIFICATIONS AND SHALL HAVE A MINIMUM 28-DAY COMPRESSIVE STRENGTH OF 4000 PSI. FORM WEAKENED PLANES IN SIDEWALK BY A JOINTING TOOL OR OTHER ACCEPTABLE MEANS. SPACE WEAKENED PLANES EQUAL TO THE WIDTH OF THE SIDEWALK. ALIGN EXPANSION JOINTS IN SIDEWALK WITH JOINTS IN CURB.
5. DEFORMED STEEL BARS SHALL BE GRADE 60 AND SHALL CONFORM TO ASTM A615. WELDED WIRE FABRIC SHALL CONFORM TO ASTM A185. DOWEL BARS SHALL BE PLAIN BARS CONFORMING TO ASTM A615. PAINT FOR DOWEL BARS SHALL CONFORM TO MSHTO DESIGNATION M72.
6. PROVIDE DETECTABLE WARNING SURFACE ON ALL CURB RAMPS. DETECTABLE WARNING SURFACE SHALL EXTEND THE FULL WIDTH AND DEPTH OF THE CURB RAMP.
7. PROVIDE DETECTABLE WARNING SURFACE WHERE PEDESTRIAN AND VEHICULAR AREAS ARE NOT OTHERWISE SEPARATED BY A CURB, RAILING OR OTHER STRUCTURAL ELEMENT. DETECTABLE WARNING SURFACE SHALL BE A MINIMUM 36 INCHES WIDE AND SHALL BE CONTINUOUS BETWEEN PEDESTRIAN AND VEHICULAR AREAS.
8. DETECTABLE WARNING SURFACE SHALL CONSIST OF RAISED TRUNCATED DOMES, 0.9 INCHES IN NOMINAL DIAMETER, 0.2 INCHES IN NOMINAL HEIGHT, CENTERED 2.35 INCHES APART.
9. FORM DETECTABLE WARNING SURFACE WITH VISUALLY CONTRASTING COLORED MATERIAL FROM ADJOINING SURFACES, EITHER LIGHT-ON-DARK OR DARK-ON-LIGHT. MATERIAL USED TO PROVIDE CONTRASTING COLOR SHALL BE AN INTEGRAL PART OF THE WALKING SURFACE.
10. ASPHALTIC CONCRETE SHALL CONFORM TO SECTION 501 OF DOTD SPECIFICATIONS.

SANITARY SEWER

1. SANITARY SEWER PIPE AND FITTINGS SHALL BE PVC CONFORMING TO ASTM D3034, SDR 35.
2. JOINTS SHALL BE ACCOMPLISHED BY MEANS OF ELASTOMERIC GASKET JOINTS CONFORMING TO ASTM D3213. GASKET MATERIALS SHALL BE SUITABLE FOR USE WITH DOMESTIC SEWERAGE AND SHALL CONFORM TO ASTM F477.

DOMESTIC WATER

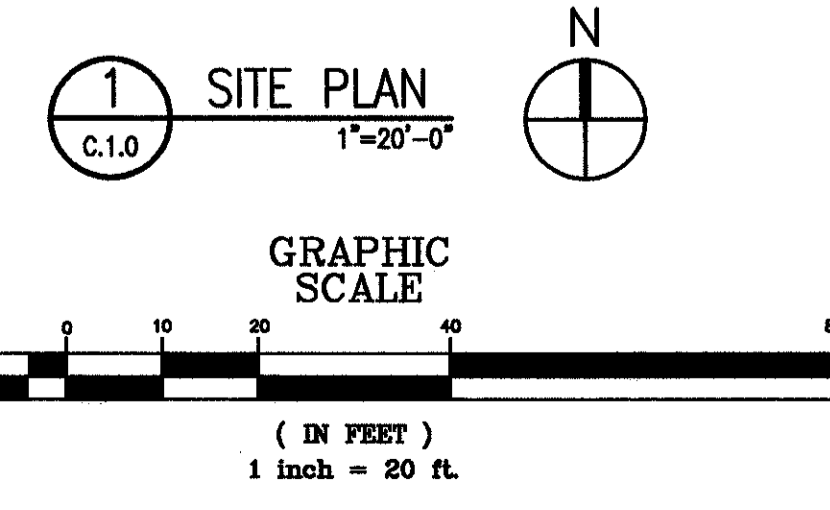
1. PROVIDE STAINLESS STEEL SADDLE TYPE TAPPING SLEEVE AND VALVE (R.O. WOOD VALVE) CONFORMING TO THE REQUIREMENTS OF THE LOCAL GOVERNING UTILITY COMPANY OR ST. CHARLES PARISH STANDARDS. PROVIDE METER VAULT, VALVES, BACKFLOW PREVENTER AND OTHER FIXTURES AND STRUCTURES CONFORMING TO THE LOCAL GOVERNING UTILITY COMPANY OR ST. CHARLES PARISH STANDARDS. COORDINATE INSTALLATION OF METER AND METER VAULT WITH LOCAL GOVERNING UTILITY COMPANY OR ST. CHARLES PARISH UTILITY DEPARTMENT.
2. PIPE AND FITTINGS FOR DOMESTIC WATER AND FIRE MAIN SHALL BE C-900.
3. PROVIDE POTABLE WATER CONNECTIONS FROM MAIN TO METER AND FROM METER TO BUILDING IN ACCORDANCE WITH LOCAL UTILITY GOVERNING UTILITY COMPANY OR ST. CHARLES PARISH UTILITY DEPARTMENT.
4. FLUSH AND DISINFECT NEW WATER LINES AND AFFECTED PORTIONS OF EXISTING WATER LINES IN ACCORDANCE WITH AWWA C601 AND LOCAL UTILITY GOVERNING UTILITY COMPANY OR ST. CHARLES PARISH UTILITY DEPARTMENT.
5. PROVIDE CONCRETE THRUST BLOCKS AND MECHANICAL RESTRAINTS AT TEES, ELBOWS, AND OTHER CHANGES IN DIRECTION.



no.	revisions	date
1		
2		
3		
4		
5		
6		

**HARRY HURST MIDDLE SCHOOL
WING ADDITION**
170 Roadrunner Lane, Destrehan, Louisiana 70047
SITE PLAN AND GENERAL NOTES

sheet	MURRAY ARCHITECTS	drawing number
project number	1007	C.1.0
date	6.14.2010	
phase	CD	



THESE DOCUMENTS ARE PROVIDED BY UNLIMITED STATES GOVERNMENT. ANY AND ALL RIGHTS ARE RESERVED BY THE UNITED STATES GOVERNMENT. THE DESIGNER'S APPROVAL AND PARTICIPATION IN THE PREPARATION OF THESE DOCUMENTS IS LIMITED TO THE PROJECT AND SITE SPECIFICALLY IDENTIFIED HEREIN. THE ENGINEER ASSUMES NO LIABILITY FOR ANY AND ALL DAMAGES, INCLUDING CONSEQUENTIAL DAMAGES, ARISING FROM THE USE OF THESE DOCUMENTS FOR ANY OTHER PROJECT OR PURPOSE.