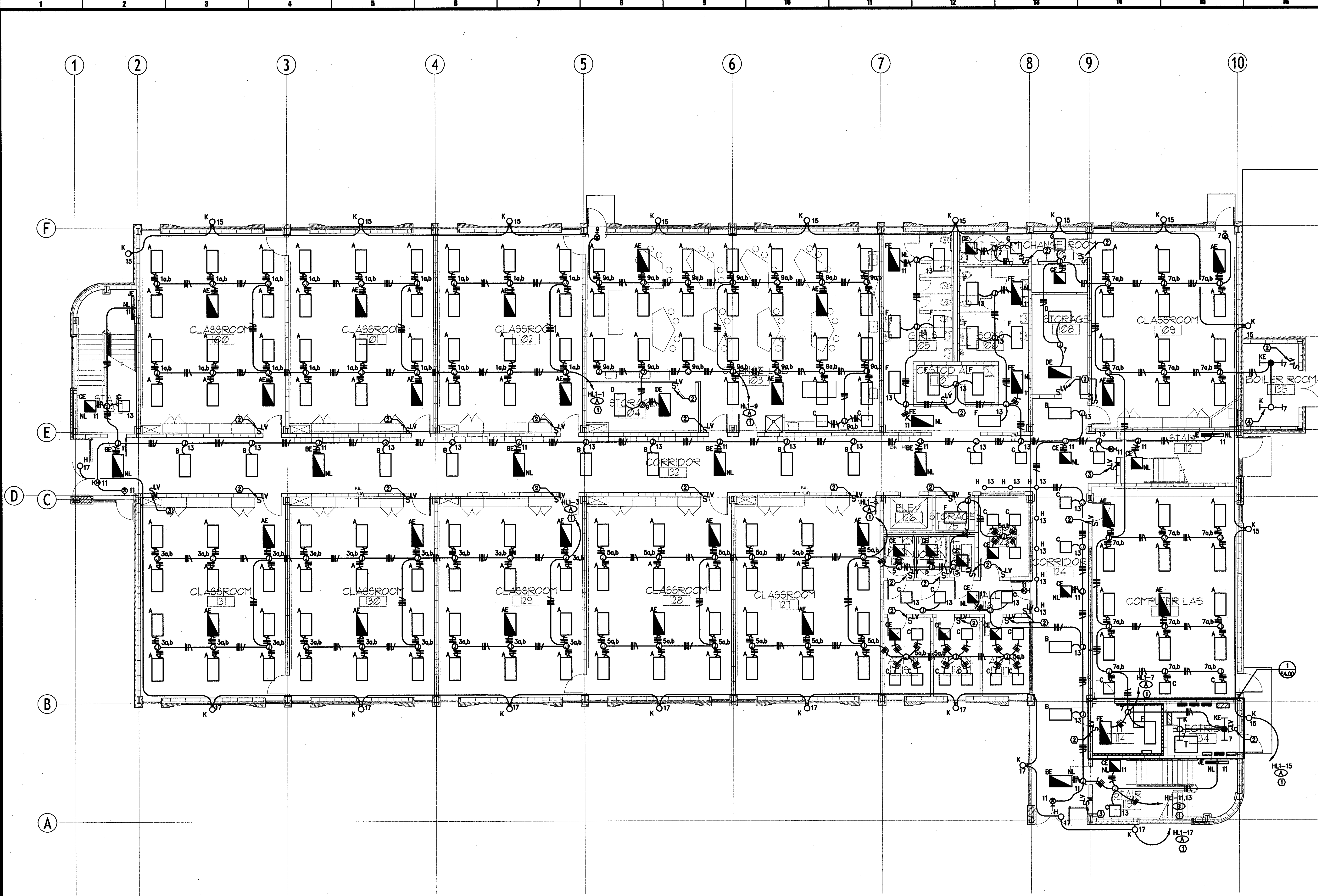


**SPECIFIC NOTES:**

- ① ROUTE CIRCUITING TO PANEL THROUGH LIGHTING RELAY PANEL. SEE 1/E4.01 FOR ADDITIONAL INFORMATION.
- ② LOW VOLTAGE ROOM LIGHTING CONTROL SWITCH. SEE DETAIL 1/E4.01 FOR ADDITIONAL INFORMATION.
- ③ LOW VOLTAGE MASTER LIGHTING CONTROL SWITCH. SEE DETAIL 1/E4.01 FOR ADDITIONAL INFORMATION.
- ④ COORDINATE FINAL INSTALLATION LOCATIONS OF LIGHTING FIXTURES IN BOILER ROOM WITH PIPING AND EQUIPMENT SO AS TO AVOID SHADOWING WITHIN ROOM.



**MURRAY ARCHITECTS**  
 1331 Armand Center Court  
 Metairie, LA 70002  
 (504) 885-7257  
 fax (504) 725-0182

**jba** CONSULTING ENGINEERS  
 JBA Consulting Engineers, Inc.  
 JBA New Orleans  
 3525 N Causeway Blvd  
 Suite 500  
 Metairie, LA 70002  
 p 504.830.0139

no.	revisions	date
1		
2		
3		
4		
5		
6		

**HARRY HURST MIDDLE SCHOOL WING ADDITION**  
 1 Roadrunner Lane, Destrehan, Louisiana 70047  
 FIRST FLOOR LIGHTING PLAN

ALVIN L. PHELPS JR.  
 PROFESSIONAL ENGINEER  
 IN  
 ELECTRICAL ENGINEERING

**MURRAY ARCHITECTS**  
 project number: 10.0123  
 date: 06.14.2010  
 phase: CD

**E1.00**

THESE DOCUMENTS ARE PROTECTED BY UNITED STATES COPYRIGHT LAW. THEY HAVE BEEN PREPARED SPECIFICALLY FOR THE PROJECT AND SITE IDENTIFIED HEREIN. ANY REPRODUCTION OR TRANSMISSION OF THESE DOCUMENTS WITHOUT THE EXPRESS WRITTEN APPROVAL AND PARTICIPATION OF MURRAY ARCHITECTS, INC. IS PROHIBITED. ALL RIGHTS ARE RESERVED TO MURRAY ARCHITECTS.

**E1.00 FIRST FLOOR LIGHTING PLAN**

1/8" = 1'-0"

