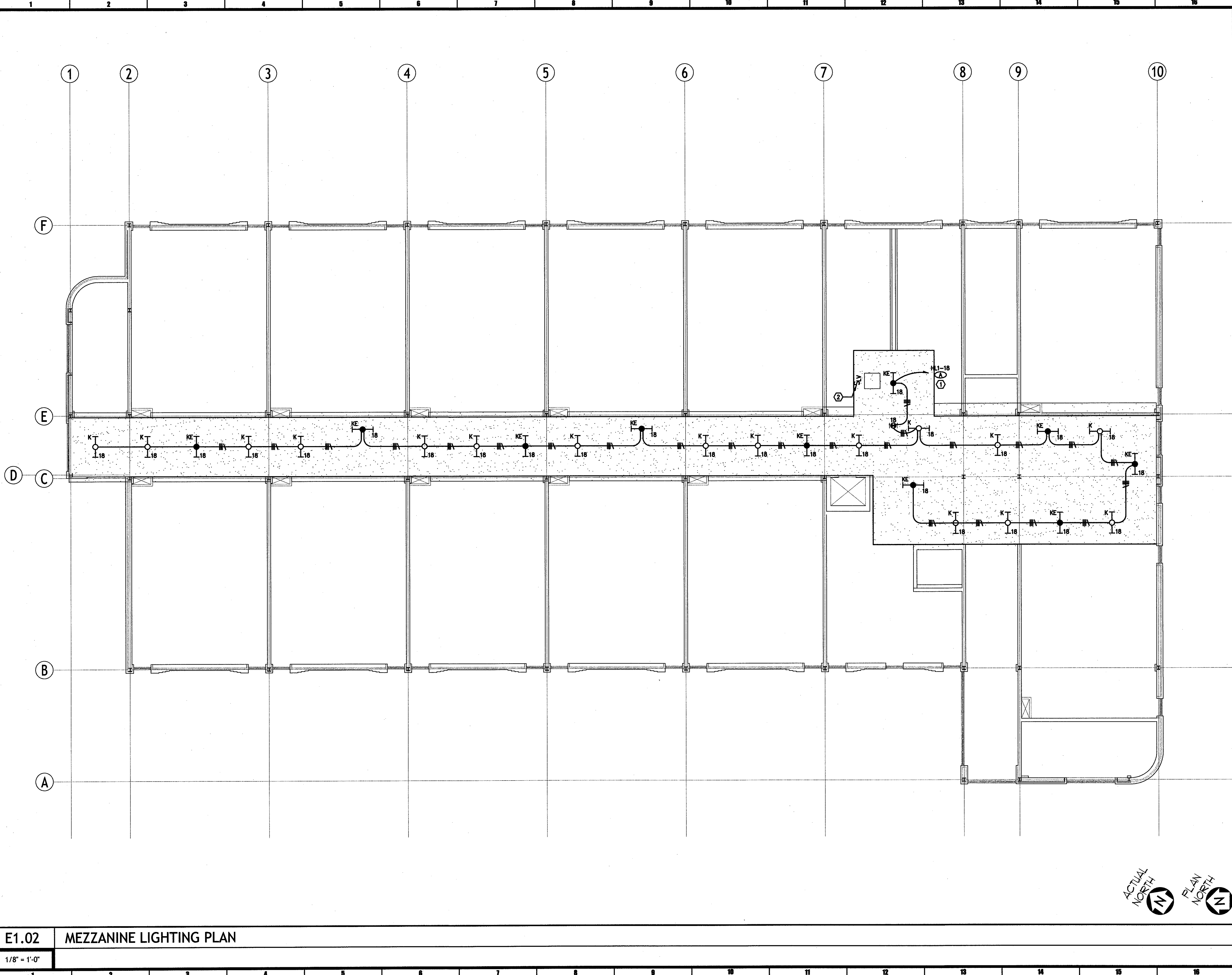


THESE DOCUMENTS ARE PROTECTED BY UNITED STATES COPYRIGHT LAW. THEY HAVE BEEN PREPARED SPECIFICALLY FOR THE PROJECT AND SITE INDICATED HEREON. ANY REPRODUCTION OR TRANSMISSION OF THESE DOCUMENTS WITHOUT THE EXPRESS WRITTEN APPROVAL AND PARTICIPATION OF MURRAY ARCHITECTS, INC. IS PROHIBITED. ALL RIGHTS ARE RESERVED TO MURRAY ARCHITECTS.



- SPECIFIC NOTES:**
- ① ROUTE CIRCUITING TO PANEL THROUGH LIGHTING RELAY PANEL. SEE 1/E4.01 FOR ADDITIONAL INFORMATION.
 - ② LOW VOLTAGE ROOM LIGHTING CONTROL SWITCH. SEE DETAIL 1/E4.01 FOR ADDITIONAL INFORMATION.



jba consulting engineers
 JBA Consulting Engineers, Inc.
 JBA New Orleans
 3525 N Causeway Blvd
 Suite 500
 Metairie, LA 70002
 p 504.830.0139

no.	revisions	date
1		
2		
3		
4		
5		
6		

HARRY HURST MIDDLE SCHOOL WING ADDITION
 1 Roadrunner Lane, Destrehan, Louisiana 70047
 MEZZANINE LIGHTING PLAN

drawing number
 project number 10.0123
 date 06.14.2010
 phase CD

E1.02

E1.02 MEZZANINE LIGHTING PLAN

1/8" = 1'-0"

