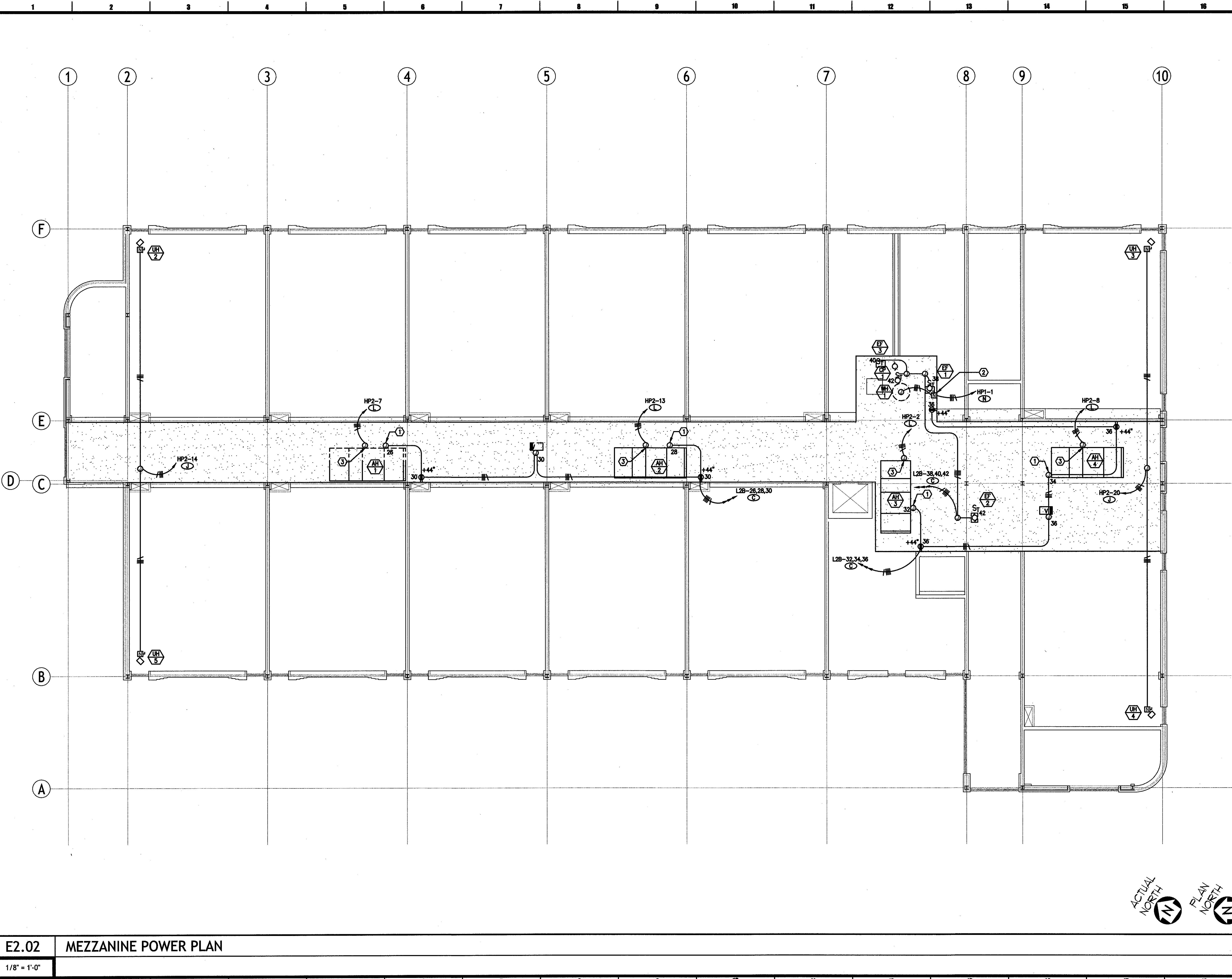


THESE DOCUMENTS ARE PROTECTED BY UNITED STATES COPYRIGHT LAW. THEY HAVE BEEN PREPARED SPECIFICALLY FOR THE PROJECT AND SITE INDICATED HEREON. ANY REPRODUCTION OR TRANSMISSION OF THESE DOCUMENTS WITHOUT THE EXPRESS WRITTEN APPROVAL AND PARTICIPATION OF MURRAY ARCHITECTS, INC. IS PROHIBITED. ALL RIGHTS ARE RESERVED TO MURRAY ARCHITECTS.



- SPECIFIC NOTES:**
- ① PROVIDE 120V POWER CONNECTION TO AIR HANDLING UNIT FOR CONTROLS, MISCELLANEOUS 120V POWER REQUIREMENTS, ETC. COORDINATE EXACT LOCATION AND REQUIREMENTS WITH DIVISION 15 PRIOR TO ROUGH-IN.
 - ② PROVIDE 600V, 200A, 3P FUSED DISCONNECT SWITCH FOR ELECTRIC WATER HEATER. COORDINATE EXACT LOCATION AND FUSING REQUIREMENTS WITH DIVISION 15 PRIOR TO ROUGH-IN.
 - ③ PROVIDE 480V POWER SINGLE POINT CONNECTION TO AIR HANDLING UNITS. COORDINATE EXACT LOCATION AND REQUIREMENTS WITH DIVISION 15 PRIOR TO ROUGH-IN.



jba JBA Consulting Engineers, Inc.
JBA New Orleans
3525 N Causeway Blvd
Suite 500
Metairie, LA 70002
p 504.830.0139
consulting engineers

no.	revisions	date
1		
2		
3		
4		
5		
6		

**HARRY HURST MIDDLE SCHOOL
WING ADDITION**
1 Roadrunner Lane, Destrehan, Louisiana 70047
MEZZANINE POWER PLAN

drawing number
project number
date
CD

E2.02

ALVIN L. PHELPS, JR.
Professional Engineer
No. 08202
Exp. 06.14.2010

E2.02 MEZZANINE POWER PLAN

1/8" = 1'-0"

