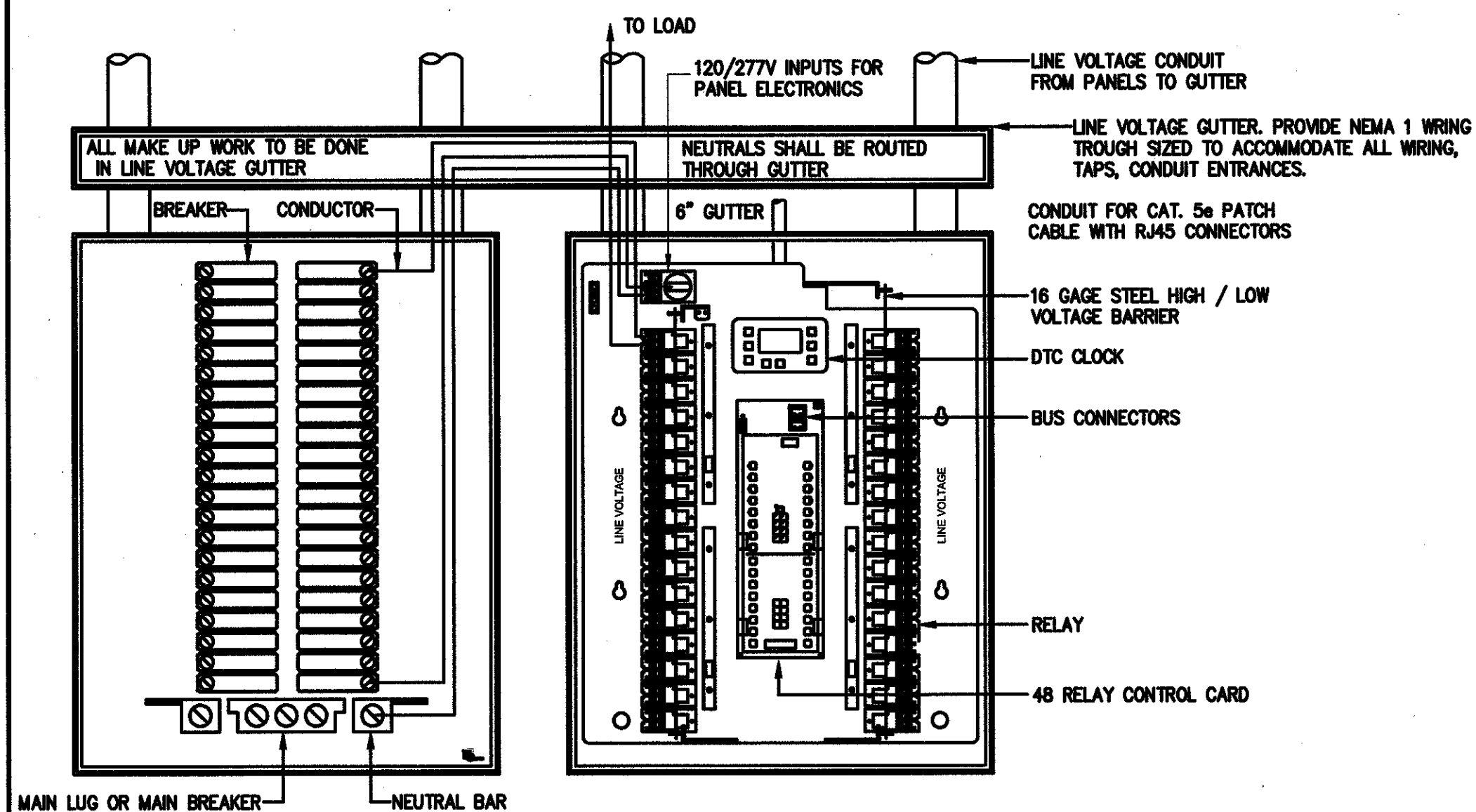
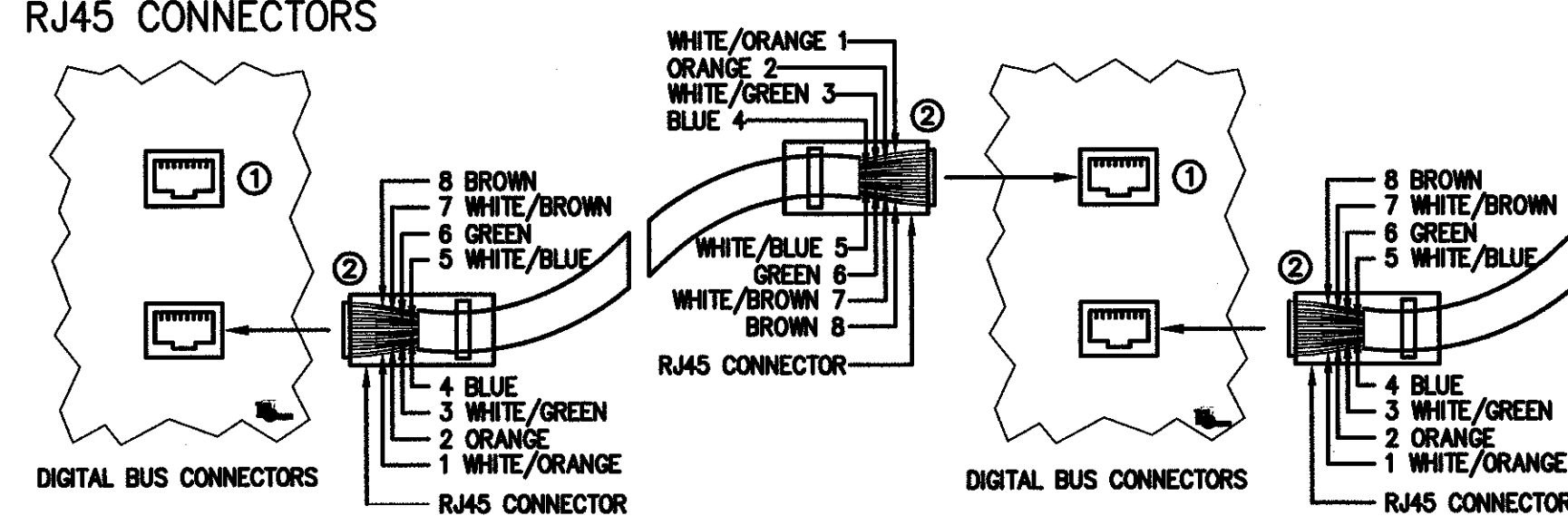


1 LIGHTING CONTROL DIAGRAM

TYPICAL LINE VOLTAGE HOOK UP
GR 2400 PANEL TO BREAKER PANEL



TYPICAL LOW VOLTAGE NETWORK HOOK UP
RJ45 CONNECTORS



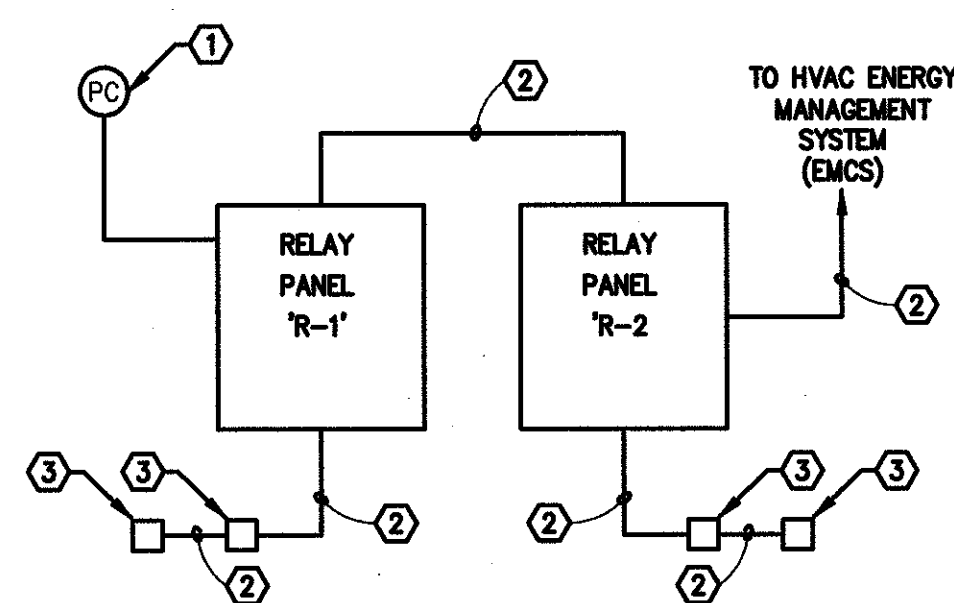
- NOTES:
1. DAISY-CHAIN CAT. 5e PATCH CABLE WITH RJ45 CONNECTORS FROM DIGITAL DEVICE TO DIGITAL DEVICE.
 2. REFER TO MANUFACTURERS INSTRUCTIONS FOR LONG DISTANCE RUNS BETWEEN DIGITAL DEVICES.
 3. UP TO 4,000 FT TOTAL BUS LENGTH.
 4. CRIMP AND TEST EACH CABLE WITH A LAN CIRCUIT TESTER PRIOR TO AND AFTER INSTALLATION.
 5. PROVIDE DEVICE BOX OF DEPTH AS NECESSARY TO ACCOMMODATE DEVICE WITH CABLE CONNECTIONS.

LIGHTING CONTROL SYSTEM SPECIFIC NOTES:

- OUTDOOR DIGITAL PHOTODIODE. INSTALL ON ROOF FACING NORTH.
- CONDUIT AND WIRE PER MANUFACTURER'S REQUIREMENTS.
- LOW VOLTAGE DIGITAL SWITCH. PROVIDE IN LOCATIONS AND QUANTITIES AS SHOWN ON FLOOR PLANS. FINISH TO BE AS SELECTED BY ARCHITECT.

LIGHTING CONTROL SYSTEM GENERAL NOTES:

1. REFER TO SPECIFICATIONS FOR ADDITIONAL INFORMATION.
2. PROVIDE FACTORY START UP, OWNER INSTRUCTION AND FACTORY SHOP DRAWINGS.
3. PROVIDE UNSWITCHED HOT TO ALL NITE LIGHT AND EMERGENCY LIGHTS, BYPASS RELAYS.
4. LIGHTING CONTROL CONTROLLER SEQUENCE SHALL BE AS FOLLOWS OR AS DIRECTED BY OWNER:
 - MASTER SWITCHES ON : CORRIDORS ONLY
 - MASTER SWITCHES OFF : ENTIRE BUILDING
 - LOCAL SWITCHES: LOCAL ROOM CONTROLLED REGARDLESS OF POSITION OF MASTER SWITCH

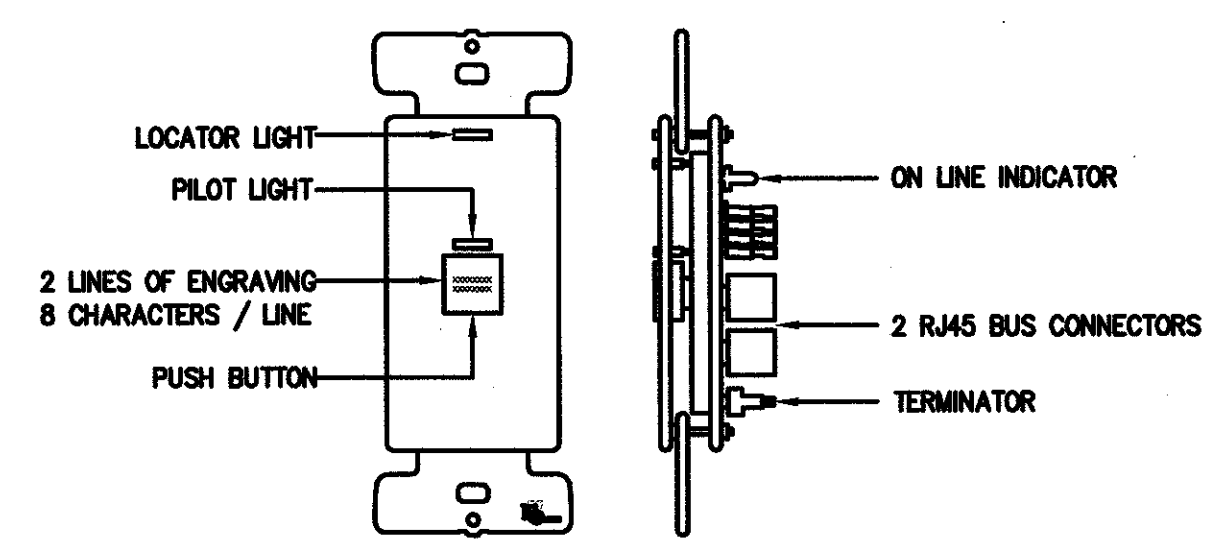


| Relay | Line Feed | Type | Voltage | Source | Description | Relay | Line Feed | Type | Voltage | Source | Description |
|-------|-----------|------|---------|--------|-------------------|-------|-----------|------|---------|--------|------------------------|
| 1 | HL1-1 | NC | 277V | HL1 | CLASSROOM 100 2/3 | 2 | HL1-5 | NC | 277V | HL1 | MEN'S TOILET #120 |
| 3 | HL1-1 | NC | 277V | HL1 | CLASSROOM 100 1/3 | 4 | HL1-5 | NC | 277V | HL1 | WOMEN'S TOILET #121 |
| 5 | HL1-1 | NC | 277V | HL1 | CLASSROOM 101 2/3 | 6 | HL1-5 | NC | 277V | HL1 | CLOSET #122 |
| 7 | HL1-1 | NC | 277V | HL1 | CLASSROOM 101 1/3 | 8 | HL1-5 | NC | 277V | HL1 | STORAGE #125 |
| 9 | HL1-1 | NC | 277V | HL1 | CLASSROOM 102 2/3 | 10 | HL1-7 | NC | 277V | HL1 | I.T. ROOM #114 |
| 11 | HL1-1 | NC | 277V | HL1 | CLASSROOM 102 1/3 | 12 | HL1-7 | NC | 277V | HL1 | ELECTRIC ROOM #134 |
| 13 | HL1-3 | NC | 277V | HL1 | CLASSROOM 131 2/3 | 14 | HL1-7 | NC | 277V | HL1 | COMPUTER LAB 113 2/3 |
| 15 | HL1-3 | NC | 277V | HL1 | CLASSROOM 131 1/3 | 16 | HL1-7 | NC | 277V | HL1 | COMPUTER LAB 113 1/3 |
| 17 | HL1-3 | NC | 277V | HL1 | CLASSROOM 130 2/3 | 18 | HL1-7 | NC | 277V | HL1 | CLASSROOM 109 2/3 |
| 19 | HL1-3 | NC | 277V | HL1 | CLASSROOM 130 1/3 | 20 | HL1-7 | NC | 277V | HL1 | CLASSROOM 109 1/3 |
| 21 | HL1-3 | NC | 277V | HL1 | CLASSROOM 129 2/3 | 22 | HL1-7 | NC | 277V | HL1 | CLASSROOM 108 2/3 |
| 23 | HL1-3 | NC | 277V | HL1 | CLASSROOM 129 1/3 | 24 | HL1-7 | NC | 277V | HL1 | CHANGE ROOM #110 |
| 25 | HL1-5 | NC | 277V | HL1 | CLASSROOM 128 2/3 | 26 | HL1-7 | NC | 277V | HL1 | TOILET ROOM #111 |
| 27 | HL1-5 | NC | 277V | HL1 | CLASSROOM 128 1/3 | 28 | HL1-7 | NC | 277V | HL1 | BOILER ROOM #135 |
| 29 | HL1-5 | NC | 277V | HL1 | CLASSROOM 127 2/3 | 30 | HL1-9 | NC | 277V | HL1 | SCIENCE LAB 103 2/3 |
| 31 | HL1-5 | NC | 277V | HL1 | CLASSROOM 127 1/3 | 32 | HL1-9 | NC | 277V | HL1 | SCIENCE LAB 103 1/3 |
| 33 | HL1-5 | NC | 277V | HL1 | ADMIN 119 2/3 | 34 | HL1-9 | NC | 277V | HL1 | STORAGE ROOM #104 |
| 35 | HL1-5 | NC | 277V | HL1 | ADMIN 119 1/3 | 36 | HL1-11 | NC | 277V | HL1 | 1ST FLR CORR NIGHT LTG |
| 37 | HL1-5 | NC | 277V | HL1 | ADMIN 118 2/3 | 38 | HL1-13 | NC | 277V | HL1 | 1ST FLR CORR/TLT LTG |
| 39 | HL1-5 | NC | 277V | HL1 | ADMIN 118 1/3 | 40 | HL1-13 | NC | 277V | HL1 | 1ST FLR CORR/TLT LTG |
| 41 | HL1-5 | NC | 277V | HL1 | ADMIN 117 2/3 | 42 | HL1-16 | NC | 277V | HL1 | CUSTODIAL #107 LTG |
| 43 | HL1-5 | NC | 277V | HL1 | ADMIN 117 1/3 | 44 | HL1-17 | NC | 277V | HL1 | EXTERIOR LIGHTING |
| 45 | HL1-5 | NC | 277V | HL1 | ADMIN 123 2/3 | 46 | HL1-21 | NC | 277V | HL1 | EXTERIOR LIGHTING |
| 47 | HL1-5 | NC | 277V | HL1 | ADMIN 123 1/3 | 48 | SPARE | NC | 277V | HL1 | EXTERIOR CANOPY LTG |

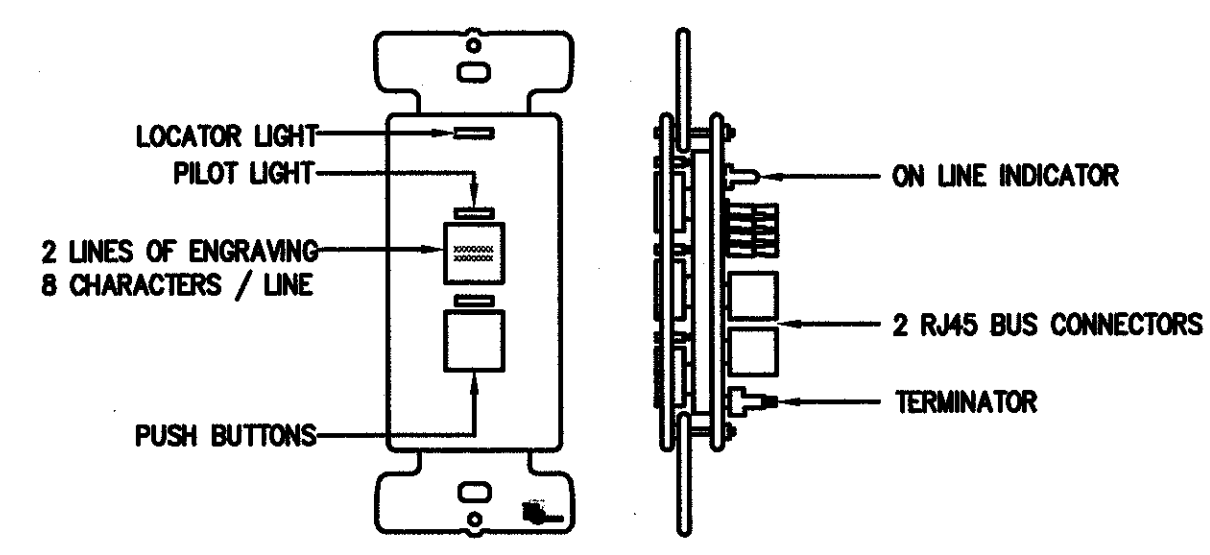
| Relay | Line Feed | Type | Voltage | Source | Description | Relay | Line Feed | Type | Voltage | Source | Description |
|-------|-----------|------|---------|--------|---------------------|-------|-----------|------|---------|--------|------------------------|
| 1 | HL1-2 | NC | 277V | HL1 | CLASSROOM 200 2/3 | 2 | HL1-8 | NC | 277V | HL1 | CLASSROOM 204 2/3 |
| 3 | HL1-2 | NC | 277V | HL1 | CLASSROOM 200 1/3 | 4 | HL1-8 | NC | 277V | HL1 | CLASSROOM 204 1/3 |
| 5 | HL1-2 | NC | 277V | HL1 | CLASSROOM 201 2/3 | 6 | HL1-10 | NC | 277V | HL1 | CLASSROOM 211 2/3 |
| 7 | HL1-2 | NC | 277V | HL1 | CLASSROOM 201 1/3 | 8 | HL1-10 | NC | 277V | HL1 | CLASSROOM 211 1/3 |
| 9 | HL1-2 | NC | 277V | HL1 | CLASSROOM 202 2/3 | 10 | HL1-10 | NC | 277V | HL1 | CONFERENCE 210 2/3 |
| 11 | HL1-4 | NC | 277V | HL1 | CLASSROOM 202 1/3 | 12 | HL1-10 | NC | 277V | HL1 | CONFERENCE 210 1/3 |
| 13 | HL1-4 | NC | 277V | HL1 | CLASSROOM 222 2/3 | 14 | HL1-10 | NC | 277V | HL1 | CLASSROOM 209 2/3 |
| 15 | HL1-4 | NC | 277V | HL1 | CLASSROOM 222 1/3 | 16 | HL1-10 | NC | 277V | HL1 | CLASSROOM 209 1/3 |
| 17 | HL1-4 | NC | 277V | HL1 | CLASSROOM 221 2/3 | 18 | HL1-10 | NC | 277V | HL1 | STORAGE ROOM #208 |
| 19 | HL1-4 | NC | 277V | HL1 | CLASSROOM 221 1/3 | 20 | HL1-12 | NC | 277V | HL1 | 2ND FLR CORR NIGHT LTG |
| 21 | HL1-4 | NC | 277V | HL1 | CLASSROOM 220 2/3 | 22 | HL1-12 | NC | 277V | HL1 | CUSTODIAL #207 LTG |
| 23 | HL1-4 | NC | 277V | HL1 | CLASSROOM 220 1/3 | 24 | HL1-14 | NC | 277V | HL1 | 2ND FLR CORR/TLT LTG |
| 25 | HL1-6 | NC | 277V | HL1 | CLASSROOM 219 2/3 | 26 | HL1-16 | NC | 277V | HL1 | ELEVATOR ROOM #217 |
| 27 | HL1-6 | NC | 277V | HL1 | CLASSROOM 219 1/3 | 28 | HL1-18 | NC | 277V | HL1 | MEZZANINE LIGHTING |
| 29 | HL1-6 | NC | 277V | HL1 | CLASSROOM 218 2/3 | 30 | SPARE | NC | 277V | HL1 | |
| 31 | HL1-6 | NC | 277V | HL1 | CLASSROOM 218 1/3 | 32 | SPARE | NC | 277V | HL1 | |
| 33 | HL1-6 | NC | 277V | HL1 | LOUNGE 213 2/3 | 34 | SPARE | NC | 277V | HL1 | |
| 35 | HL1-6 | NC | 277V | HL1 | LOUNGE 213 1/3 | 36 | SPARE | NC | 277V | HL1 | |
| 37 | HL1-8 | NC | 277V | HL1 | WOMEN'S TOILET #214 | 38 | SPARE | NC | 277V | HL1 | |
| 39 | HL1-8 | NC | 277V | HL1 | MEN'S TOILET #215 | 40 | SPARE | NC | 277V | HL1 | |
| 41 | HL1-6 | NC | 277V | HL1 | ELECTRIC ROOM #216 | 42 | SPACE | | | | |
| 43 | HL1-6 | NC | 277V | HL1 | ELEVATOR ROOM #216 | 44 | SPACE | | | | |
| 45 | HL1-8 | NC | 277V | HL1 | CLASSROOM 203 2/3 | 46 | SPACE | | | | |
| 47 | HL1-8 | NC | 277V | HL1 | CLASSROOM 203 1/3 | 48 | SPACE | | | | |

2 CONTROL SWITCH DIAGRAM

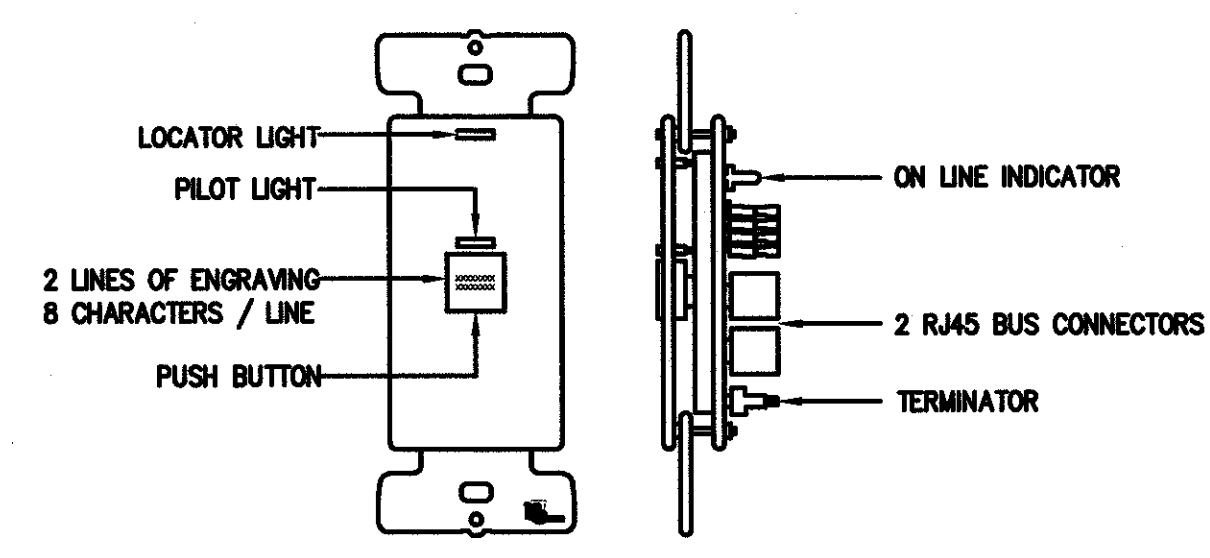
MASTER DIGITAL SWITCH



DUAL LEVEL DIGITAL SWITCH

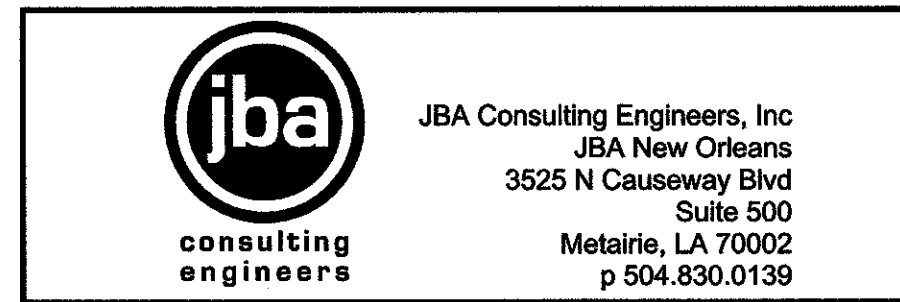


SINGLE LEVEL DIGITAL SWITCH



NOTES:

1. SWITCH BUTTONS ARE FACTORY ENGRAVED.
2. PUSH BUTTONS MAY CONTROL ANY RELAY(S) IN ANY COMBINATION.
3. LED PILOT LIGHTS INDICATE STATUS.
4. SWITCH LINKED TO THE GR 2400 DIGITAL BUS VIA CAT. 5e PATCH CABLE WITH RJ45 CONNECTORS.
5. PROVIDE FACE PLATE STYLE AS DICTATED BY MANUFACTURER.



| no. | revisions | date |
|-----|-----------|------|
| 1 | | |
| 2 | | |
| 3 | | |
| 4 | | |
| 5 | | |
| 6 | | |

HARRY HURST MIDDLE SCHOOL WING ADDITION
1 Roadrunner Lane, Destrehan, Louisiana 70047

DIAGRAMS AND DETAILS

ALVIN L. PHELPS, JR.
Professional Engineer
No. 30282
IN THE STATE OF LOUISIANA

MURRAY ARCHITECTS
project number 10.0123
date 06.14.2010
phase CD

drawing number **E4.01**