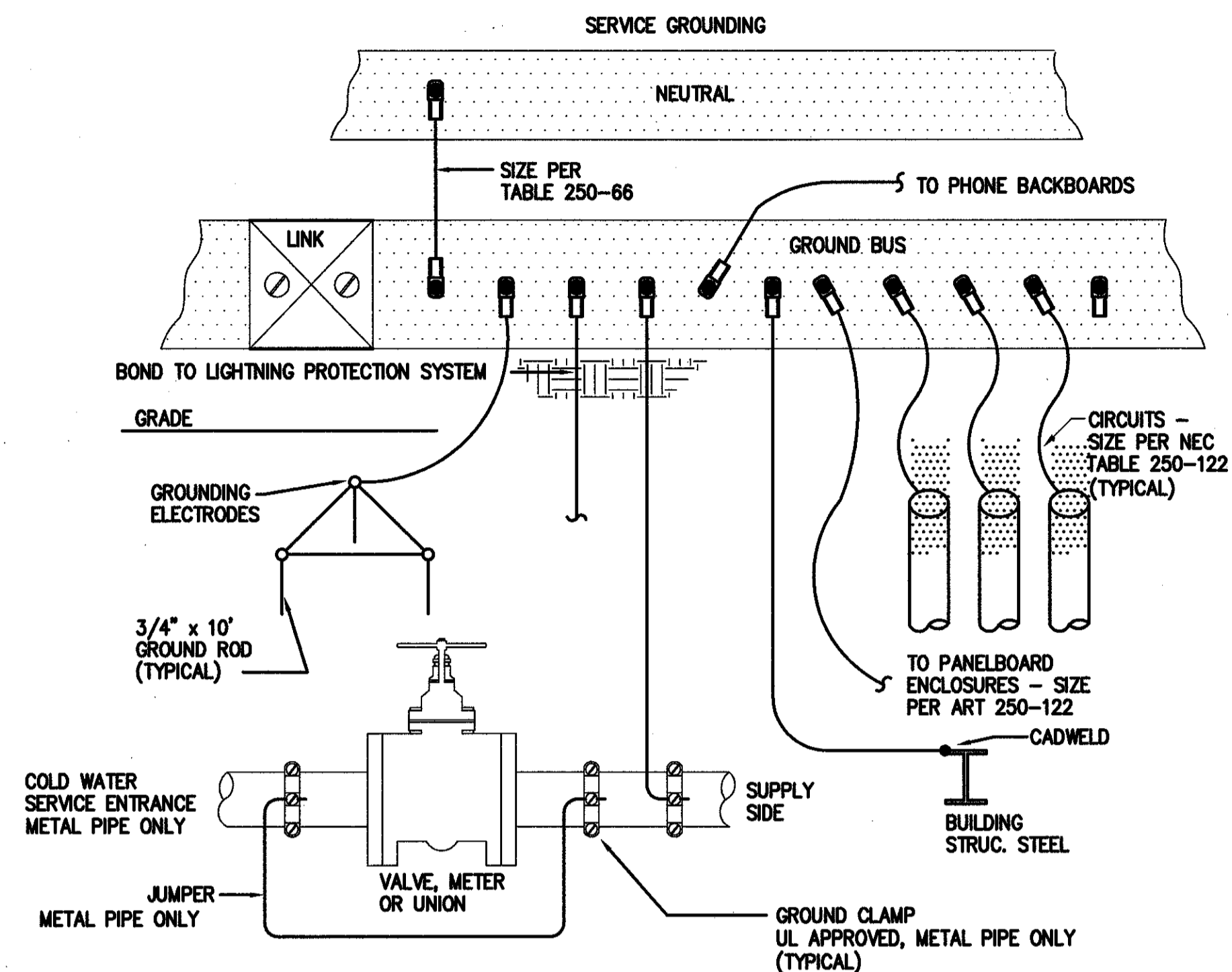


# 1 ELECTRICAL SERVICE GROUNDING DETAIL

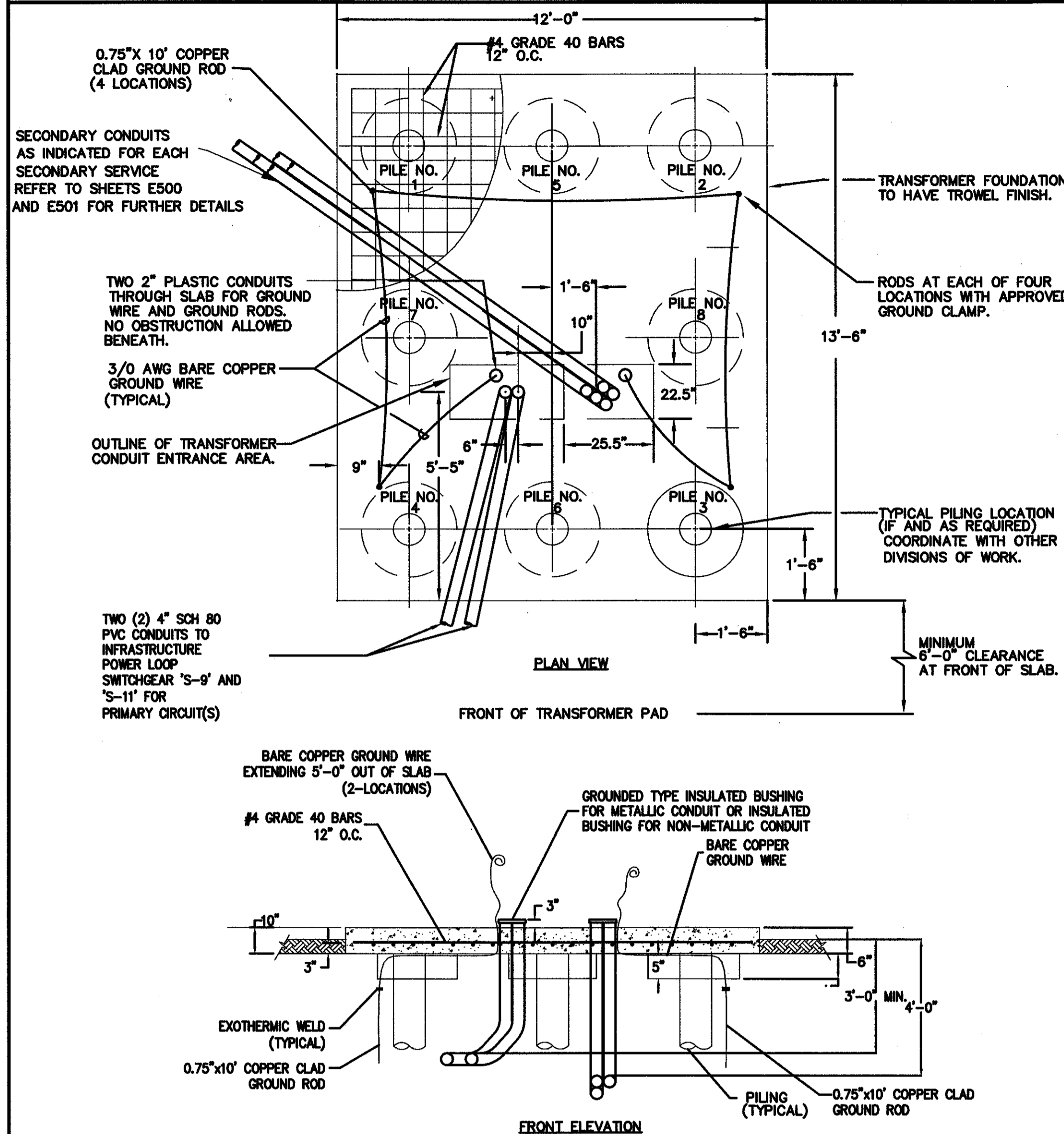
NO SCALE



- NOTES:
1. PROVIDE GROUNDING CONDUCTORS PER NEC 250.
  2. SEE SPECIFICATIONS AND PLANS FOR ADDITIONAL REQUIREMENTS.

# 2 UTILITY TRANSFORMER PAD DETAIL

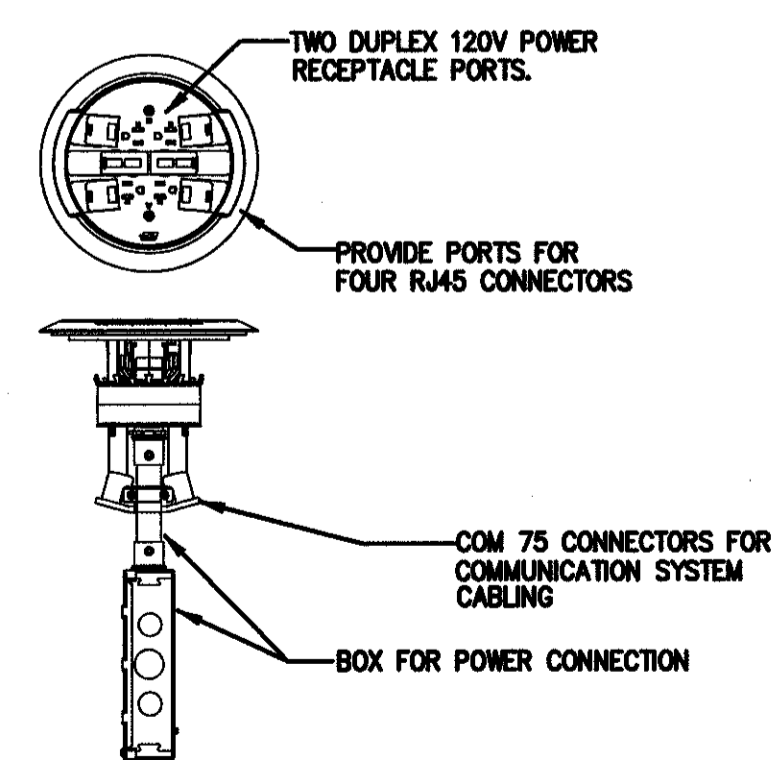
NO SCALE



THIS DETAIL SHOWS TYPICAL TRANSFORMER PAD INSTALLATION. IT IS THE CONTRACTOR'S RESPONSIBILITY TO COORDINATE WITH THE ARCHITECT AND THE VENDOR TO ASCERTAIN THE EXACT REQUIREMENTS FOR THE PAD INSTALLATION AND CONSTRUCTION, IN PARTICULAR PERTAINING TO THE REQUIREMENTS FOR THE PILES. COORDINATE INSTALLATION WITH OTHER DIVISIONS OF WORK. ADJUST THE WORK SHOWN AS REQUIRED TO ACCOMMODATE SPECIFIC EQUIPMENT REQUIREMENTS, SOIL CONDITIONS, KVA (FOR DIMENSIONS), LOCATION, ETC. REFER TO RISER DIAGRAMS FOR EXACT FEEDER SIZES. VERIFY ALL REQUIREMENTS WITH DIMENSIONS AND WEIGHT OF SPECIFIC TRANSFORMER PROVIDED, PRIOR TO COMMENCING WORK. ADJUST ACCORDINGLY.

# 3 POKE-THRU DEVICE DETAIL

NO SCALE



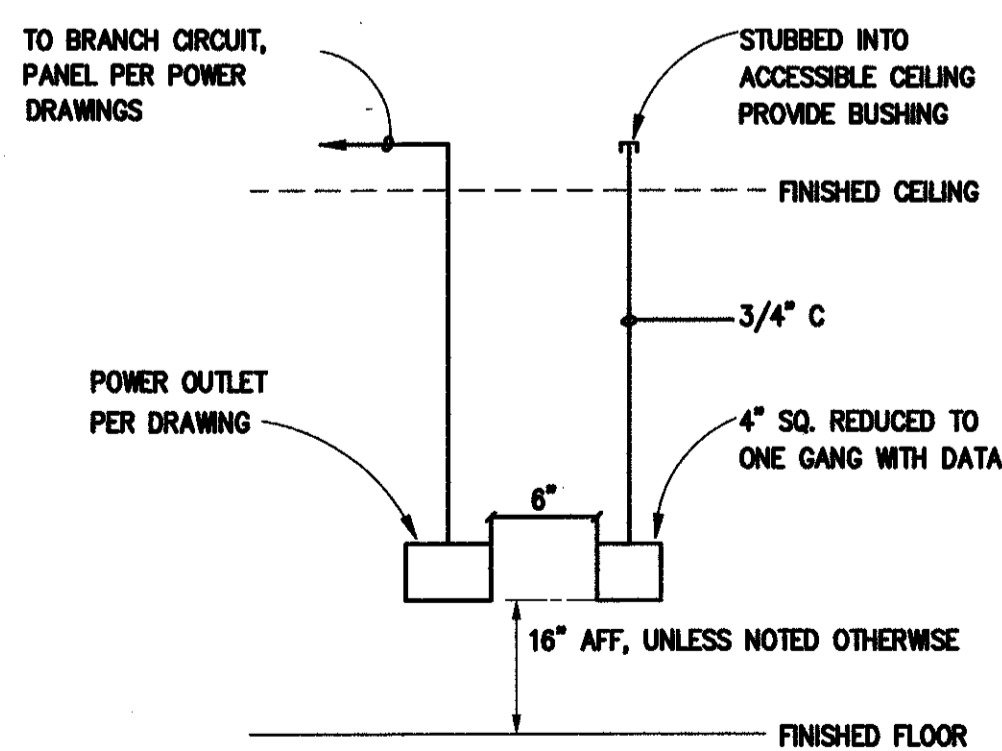
TYPICAL FLOOR BOXES FOR INDIVIDUAL POWER AND COMMUNICATION DEVICES

REFER TO SYMBOLS:



# 4 TYPICAL WALL DATA OUTLET

NO SCALE



▽ = DRAWING SYMBOL

**MURRAY ARCHITECTS**

133 Ardmore Center Court  
Metairie, LA 70002  
(985) 885-7275  
fax (985) 725-0182

**jba**  
consulting  
engineers

JBA Consulting Engineers, Inc.  
JBA New Orleans  
3525 N Causeway Blvd  
Suite 500  
Metairie, LA 70002  
p 504.830.0139

no.	revisions	date
1		
2		
3		
4		
5		
6		

**HARRY HURST MIDDLE SCHOOL WING ADDITION**

1 Roadrunner Lane, Destrehan, Louisiana 70047

DIAGRAMS AND DETAILS

no.	revisions	date
1		
2		
3		
4		
5		
6		

ALVIN L. PHELPS, JR.  
Professional Engineer  
ELECTRICAL ENGINEERING

project number  
10.0123  
date  
06.14.2010  
phase  
CD

**E4.03**