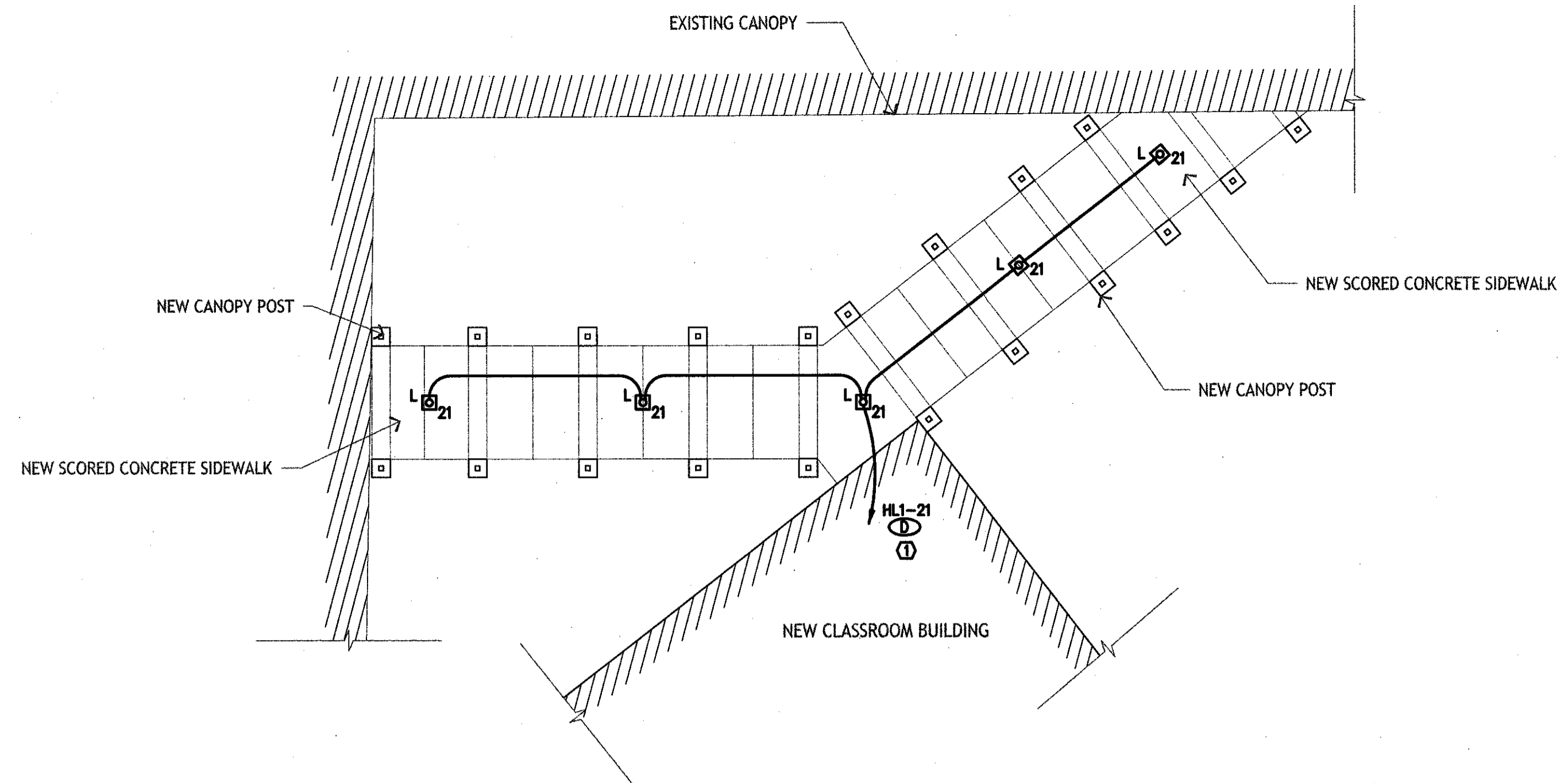


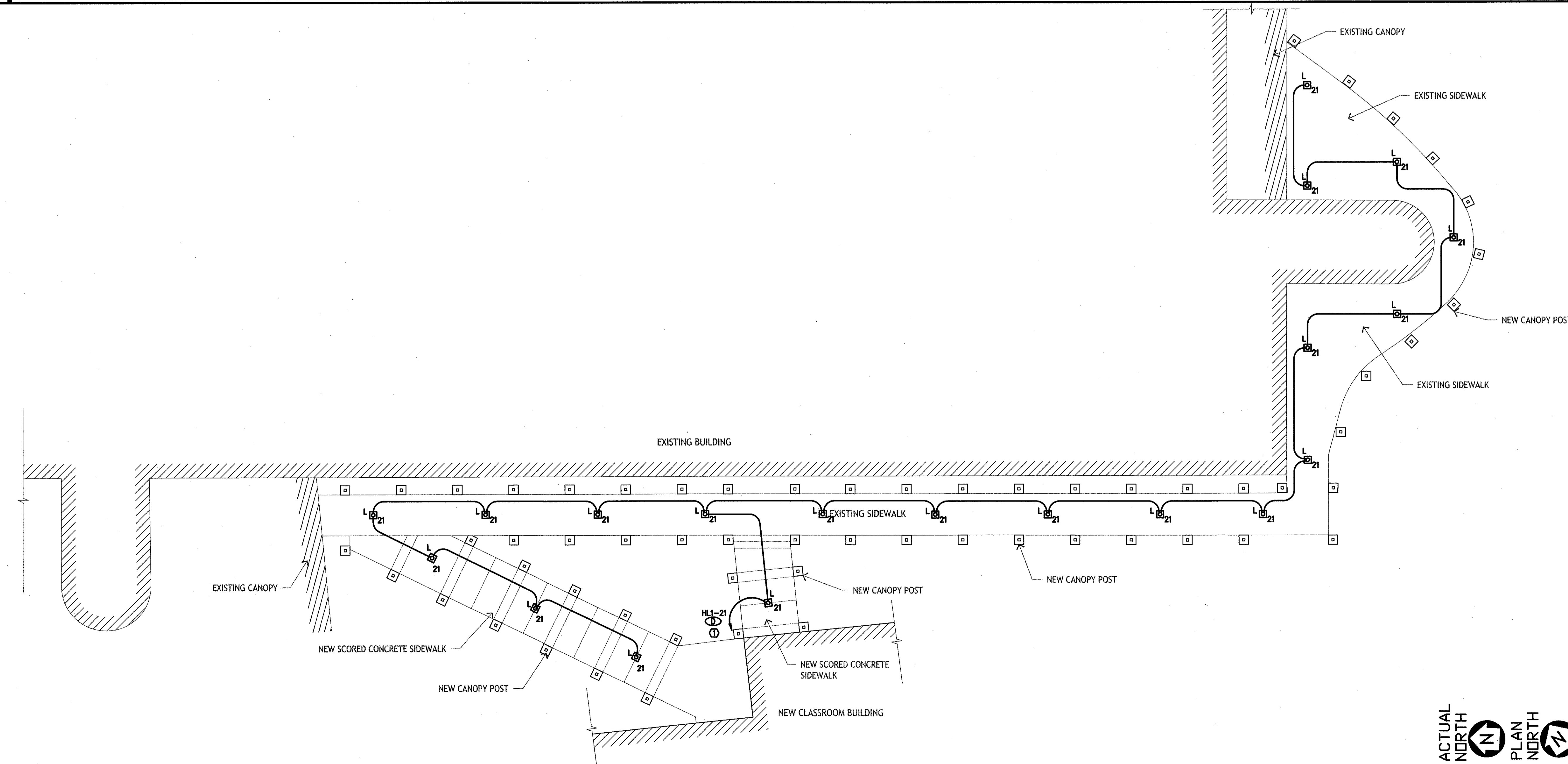
SPECIFIC NOTES:

- ① ROUTE CIRCUITING TO PANEL THROUGH LIGHTING RELAY PANEL. USE #10 AWG THROUGHOUT CIRCUIT. COMBINE HOMERUNS FOR CANOPY LIGHTING IN A COMMON JUNCTION BOX IN ELECTRICAL ROOM BEFORE EXTENDING CIRCUITING TO LIGHTING RELAY PANEL. SEE 1/E4.01 FOR ADDITIONAL INFORMATION.



2 CANOPY LIGHTING PLAN

1/8"=1'-0"



1 CANOPY LIGHTING PLAN

1/8"=1'-0"



MURRAY ARCHITECTS
 131 around center court
 Metairie, LA 70002
 (985) 884-7705
 fax (985) 725-0182

jba consulting engineers
 JBA Consulting Engineers, Inc.
 JBA New Orleans
 3525 N Causeway Blvd
 Suite 500
 Metairie, LA 70002
 p 504.830.0139

no.	revisions	date
1		
2		
3		
4		
5		
6		

HARRY HURST MIDDLE SCHOOL WING ADDITION
 1 Roadrunner Lane, Destrehan, Louisiana 70047
 CANOPY LIGHTING PLANS

seat **MURRAY ARCHITECTS** drawing number
 project number 10.0123
 date 06.14.2010
 phase CD
ALVIN L. PHILIPS, JR.
 LICENSED PROFESSIONAL ENGINEER
 IN ELECTRICAL ENGINEERING
 STATE OF LOUISIANA
 No. 10277

ES1.01

THESE DOCUMENTS ARE PROTECTED BY UNITED STATES COPYRIGHT LAW. THEY HAVE BEEN PREPARED SPECIFICALLY FOR THE EXCLUSIVE USE OF THE CLIENT AND ARE NOT TO BE REPRODUCED OR TRANSMITTED IN ANY FORM OR BY ANY MEANS, ELECTRONIC OR MECHANICAL, INCLUDING PHOTOCOPYING, RECORDING, OR BY ANY INFORMATION STORAGE AND RETRIEVAL SYSTEM, WITHOUT THE EXPRESS WRITTEN APPROVAL AND PARTICIPATION OF MURRAY ARCHITECTS. REPRODUCTION OF THESE DOCUMENTS MUST BE AUTHORIZED BY THE ARCHITECT. ALL RIGHTS ARE RESERVED TO MURRAY ARCHITECTS.