

Addendum #1 - March 11, 2010

PROJECT: JEFFERSON PARISH SHERIFF'S OFFICE
4th DISTRICT STATION
6228 AIRLINE DRIVE
METAIRIE, LA 70003

PROJECT NO.: SA # 51122.03

FROM: SIZELER THOMPSON BROWN ARCHITECTS
PROJECT DESIGN GROUP, LLC
300 Lafayette Mall, Suite 200
New Orleans, Louisiana 70130
(504) 523-6472 (504) 529-1181f

TO: All on Record Holding Bidding Documents

This Addendum forms a part of the Contract Documents and modifies the original Bidding Documents dated February 25, 2010. The contents of this Addendum #1 shall be included in the Contract Documents when the Agreement is executed. Changes made by this Addendum take precedence over the Documents of earlier date.

Bidders are advised to call attention of all sub-bidders and suppliers to changes that may affect their work.

Acknowledge receipt of this Addendum #1 in the space provided on the Bid Form.

CHANGES TO THE SPECIFICATIONS

1. Document 00100 - Advertisement for Bids
Delete document 00100 - Advertisement for Bids, and substitute the new Advertisement for Bids included herein as Attachment #1. A paragraph regarding electronic bidding has been included.
2. Louisiana Uniform Public Work Bid Form
Delete the Louisiana Uniform Public Bid Form, dated January 2009 and substitute the new Louisiana Uniform Public Bid Form, dated August 2009 included herein as Attachment #2.
3. SECTION 02822 - Security fencing, gates and barriers:
Replace the existing 2.1 Industrial High Security Fencing System with the following:

2.1 INDUSTRIAL HIGH SECURITY FENCING SYSTEM

A. Provide a welded ornamental steel high security fence system with extended pickets, bottom rail treatment and 4-rail style.

1. Manufacturer/Product:

a. Ameristar Fence Products; Montage II ATF Industrial Fence System.

1) Provide size and at location as indicated on the drawings.

2) Style: "Genesis"

b. Prior approved equal.

B. Material: Steel material for fence panels and post. The steel shall be hot-dip galvanized to meet the requirements of ASTM A653, G-90.

C. Pickets: Provide 1-inch square by 14 gage tubing.

D. Rails: Provide steel channels 1.75-inch by 1.75-inch by 0.105-inch. Rails shall be pre-drilled and coordinated with picket connection.

E. Posts: Shall be a minimum of 2 inch by 1.75 inch by 12 gage. Fences posts and gate post shall be sized per required loading and manufacturer's standard.

F. The manufactured panels shall be subjected to an inline electrode position coating process consisting of a multi-stage pretreatment, followed by a duplex application of an epoxy and acrylic coating with a minimum thickness of 2-mils.

1. Color as selected by Architect from manufacturer's full range.

G. Fence Height: As indicated on the drawings.

H. Provide passport steel roll gates with interior rollers and constructed of steel. Provide size and at location as indicated on the drawings. Gates shall be fabricated using welded ornamental panel material and gate ends having a 1-3/4-inch square cross-sectional size. All rails and upright intersections shall be joined by welding. All picket and rail intersections shall also be joined by welding.

I. Fabrication:

1. Pickets, rails and posts shall be pre-cut to specified lengths. Rails shall be pre-punched to accept pickets.

2. Pickets shall be inserted into the pre-punched holes in the rails and shall be aligned to standard spacing using a specially calibrated alignment fixture. The aligned pickets and rails shall be joined at each picket-to-rail seamless intersection.

Delete sub-paragraph 2.2 GALVANIZED STEEL FENCING SYSTEM

4. SECTION 05510 - Metal Stairs:

Provide aluminum ships ladder in lieu of aluminum pivotal ladder.

Update the following Subparagraphs with the following:

1.1 Summary, A., 4. Aluminum ships (in lieu of pivotal) ladder with walk-thru handrails.

2.5 Ships Ladder in lieu of Pivotal Ladder

A. Provide ships (in lieu of pivotal) ladder by Precision Ladders, Inc. or prior approved equal.

CHANGES TO THE DRAWINGS

Architectural

5. See Attachment #3 included in this Addendum #1 for a clarification drawing for the exterior perimeter security fence. See also item #3 above.

Structural

6. See Attachment #4, (SKS-1) included in this Addendum #1 for a clarification drawing of detail #6 on sheet S102.1.

RESPONSE TO QUESTIONS SUBMITTED TO THE ARCHITECTS OFFICE

The following is a list of questions submitted in writing to the Architect's office.
The answers are in bold.

7. Q: In reference to section 16716 - Communications. Is the contractor to provide backbone feeder communications cabling? If so, please provide a specification on the fiber optic and copper backbone cabling.
STBA Answer: The contractor shall provide cabling from the 2nd floor IT Closet to the utility pole as shown on E200 and E501. The fiber is 6 strand multi-mode fiber cable and the telephone is a 100 pair CAT unshielded cable as specified on E501. Corning and General Cable are considered acceptable manufacturers for the fiber and Superior Essex and General Cable are considered acceptable manufacturer's for the 100 pair cable.
8. Q: In reference to section 16716 - Communications. Part 2.1B states that the horizontal cabling should be non-plenum rated. Please clarify.
STBA Answer: Cable shall be non-plenum rated.
9. Q: In reference to section 16716 - Communications. Part 2.6A requires provision of a Cisco 6500 Series Switch. There are numerous configurations of this switch. Please provide specification.
STBA Answer: Contractor shall provide the switch configuration that meets the cabling and connection requirements specified in the contract documents, plus 25% spare.
10. Q: The instruction to bidders makes a reference to Davis Bacon wage being required if the project is federally funded. Is Davis Bacon required?
STBA Answer: The project is NOT federally funded, so the Davis Bacon Wage Rates will not be required.

11. Q: Drawing C6, details 12 & 13, show a 12" sand sub base under the paving. Specification section 2200, 2.1, B calls for crushed stone under the paving. Please clarify.

STBA Answer: Compacted sand fill is sufficient. Sand fill "a select granular material, such as locally available river sand" should be non-plastic and free of roots, clay lumps, and other deleterious materials with no more than 10% by weight of material passing a U.S. Standard No 200 mesh sieve. The organic material should not exceed 5% by weight. Fill shall be compacted to at least 95% of its maximum dry density near optimum water content using ASTM D1557.

12. Q: The access doors in section 8311 are not shown on the drawings. What are the locations and sizes?

STBA Answer: On Mechanical Sheet M100, General Note No. 23. Where concealed by inaccessible finishes, provide access doors to all valve boxes, valves, duct static pressure sensors, manual volume dampers, fire dampers, fire/smoke controls, air vents, drain connections and all other items requiring periodic maintenance. Location of access doors with all trades affected. Access doors for walls, ceilings and floors, both standard and fire rated are specified in Architectural specifications. Provide access doors and frames as required from the general note above to access all mechanical, fire protection, plumbing and electrical work, which requires access.

13. Q: Metal Lockers (10500) specifications state that the lockers are to be 15" wide. The elevation 11/A801 shows the lockers as 12". Please confirm that the lockers are to be 15".

STBA Answer: The lockers shall be 15" wide as specified.

PRIOR APPROVAL OF MATERIALS

Listed below are manufacturers who are recognized as capable of producing materials, manufactured items, and articles of equipment equal to those specified. Equipment will be considered acceptable providing the equipment meets, or exceeds specification requirements, has the capacity and performance requirements, fits the space available to the satisfaction of the Architect, conforms in every respect with the applicable regulatory agencies and for lighting fixtures is also similar in appearance, construction and photometrics (photometric information shall be based on independent laboratory reports). Contractor shall submit for approval large scale drawings of proposed layouts and arrangements and samples of lighting fixtures when requested.

The listed prior approvals are not given with respect to any specific model, series, catalog number, etc. Suppliers are cautioned that before their equipment is actually approved, it will be incumbent upon them to demonstrate to the Architect that it is in fact equal to the requirements specified and conforms fully to all specification requirements.

Architectural

Specification Section 08710 - Door Hardware; Stanley Security Solutions, Door Closers D-4550 / D-4551 Series; Exit Devices, Apex 2000 Series

Specification Section 08110 -Hollow Metal Doors and Frames; Pioneer Industries also Metal Products, Inc.

This ADDENDUM consists of:

5 TYPEWRITTEN ADDENDUM PAGES,

4 ATTACHMENTS (5 TOTAL PAGES),

For a total of 10 DOCUMENT SHEETS

END OF ADDENDUM #1

DOCUMENT 00100

ADVERTISEMENT FOR BIDS

Sealed bids must be received by the Jefferson Parish Sheriff's Office, 1233 West Bank Expressway, Building B, Room 413, Harvey, LA 70058 by **2:00 PM on Thursday, March 25, 2010**. Late bids will **not** be accepted. **The official time will be kept by Sizeler Architects with an atomic clock.** Bids will be publicly opened and read aloud for the following:

JEFFERSON PARISH SHERIFF'S OFFICE 4TH DISTRICT STATION Bid # **10A1202**

Complete bidding documents may be obtained from Ridgways, 433 O'Keefe Ave., New Orleans, LA 70012. Hours of Operation: Monday thru Friday, 8:00 am - 5:00 pm. A \$225.00 deposit is required. Please make check payable to Sizeler Thompson Brown Architects.

Bidding documents will only be issued to licensed contractors or their authorized representatives. No bidding documents will be issued later than 24 hours prior to the date and time set for the bid opening.

Electronic Submittals of Bids

In accordance with LRS 38:2212.1(4)(a), the Jefferson Parish Sheriff's Office offers bidders the ability to respond to this bid electronically. Please visit our website at www.jpso.com, click on "Public Notices >Public Bids" and follow instructions. You may also go directly to our vendor's website at www.centralauctionhouse.com and click on "Click Here to View Listings" at the bottom of the page.

Bids received in violation of LSA-R.S. 37:2163 (failure to provide contractor's license number on the bid envelope) shall be stamped "Rejected", returned unopened to the bidder and shall not be read aloud.

Sealed bids must have BID # 10A1202 boldly displayed on outside of envelope.

All bids must be accompanied by a bid security equal to five (5%) of the base bid plus any added alternates, and must be in the form of a certified check, cashier's check or bid bond (provided in project manual) made payable to Jefferson Parish Sheriff's Office. A bid bond shall comply with LSA-R.S. 38:2218(B) and 38:2219.

The Owner reserves the right to reject any and all bids and to waive any informalities incidental thereto. Bids which deviate from the project plan and specifications will not be considered.

Winning bid is subject to the Jefferson Parish Sheriff's Office acceptance and approval.

A Pre-Bid Conference will be held on Thursday, March 11, 2010 at 2:00 pm located at 1233 West Bank Expressway, Bldg. B, Room 413, Harvey, LA 70058. All proposed bidders are encouraged to attend the pre-bid conference.

Publish dates will be February 25th, March 4th, and March 11th in the Times Picayune and Jefferson Democrat.

END OF DOCUMENT

LOUISIANA UNIFORM PUBLIC WORK BID FORM

TO: Jefferson Parish Sheriff's Office
1233 Westbank Expressway, Room 413
Harvey, LA 70058

BID FOR: Jefferson Parish Sheriff's Office
Fourth District Station
Metairie, LA 70003

The undersigned bidder hereby declares and represents that she/he; a) has carefully examined and understands the Bidding Documents, b) has not received, relied on, or based his bid on any verbal instructions contrary to the Bidding Documents or any addenda, c) has personally inspected and is familiar with the project site, and hereby proposes to provide all labor, materials, tools, appliances and facilities as required to perform, in a workmanlike manner, all work and services for the construction and completion of the referenced project, all in strict accordance with the Bidding Documents prepared by: Sizeler Thompson Brown Architects and dated: February 25.21010

Bidders must acknowledge all addenda. The Bidder acknowledges receipt of the following **ADDENDA:** (Enter the number the Designer has assigned to each of the addenda that the Bidder is acknowledging) _____

TOTAL BASE BID: For all work required by the Bidding Documents (including any and all unit prices designated "Base Bid" * but not alternates) the sum of:

_____ Dollars (\$ _____)

ALTERNATES: For any and all work required by the Bidding Documents for Alternates including any and all unit prices designated as alternates in the unit price description.

Alternate No. 1 (Owner to provide description of alternate and state whether add or deduct) for the lump sum of:

N/A _____ Dollars (\$ _____)

Alternate No. 2 (Owner to provide description of alternate and state whether add or deduct) for the lump sum of:

N/A _____ Dollars (\$ _____)

Alternate No. 3 (Owner to provide description of alternate and state whether add or deduct) for the lump sum of:

N/A _____ Dollars (\$ _____)

NAME OF BIDDER: _____

ADDRESS OF BIDDER: _____

LOUISIANA CONTRACTOR'S LICENSE NUMBER: _____

NAME OF AUTHORIZED SIGNATORY OF BIDDER: _____

TITLE OF AUTHORIZED SIGNATORY OF BIDDER: _____

SIGNATURE OF AUTHORIZED SIGNATORY OF BIDDER **: _____

DATE: _____

* The Unit Price Form shall be used if the contract includes unit prices. Otherwise it is not required and need not be included with the form. The number of unit prices that may be included is not limited and additional sheets may be included if needed.

** If someone other than a corporate officer signs for the Bidder/Contractor, a copy of a corporate resolution or other signature authorization shall be required for submission of bid. Failure to include a copy of the appropriate signature authorization, if required, may result in the rejection of the bid unless bidder has complied with La. R.S. 38:2212(A)(1)(c) or RS 38:2212(O).

BID SECURITY in the form of a bid bond, certified check or cashier's check as prescribed by LA RS 38:2218.A is attached to and made a part of this bid.

**LOUISIANA UNIFORM PUBLIC WORK BID FORM
UNIT PRICE FORM**

TO: Jefferson Parish Sheriff's Office
1233 Westbank Expressway, Room 413
Harvey, LA 70058

BID FOR: Jefferson Parish Sheriff's Office
Fourth District Station
Metairie, LA 70003

UNIT PRICES: This form shall be used for any and all work required by the Bidding Documents and described as unit prices. Amounts shall be stated in figures and only in figures.

DESCRIPTION: Add/Delete new composite piling <input checked="" type="checkbox"/> Base Bid or <input type="checkbox"/> Alt.# ____				
REF. NO.	QUANTITY:	UNIT OF MEASURE:	UNIT PRICE	UNIT PRICE EXTENSION (<i>Quantity times Unit Price</i>)
1		1 piling each		

DESCRIPTION: <input type="checkbox"/> Base Bid or <input type="checkbox"/> Alt.# ____				
REF. NO.	QUANTITY:	UNIT OF MEASURE:	UNIT PRICE	UNIT PRICE EXTENSION (<i>Quantity times Unit Price</i>)

DESCRIPTION: <input type="checkbox"/> Base Bid or <input type="checkbox"/> Alt.# ____				
REF. NO.	QUANTITY:	UNIT OF MEASURE:	UNIT PRICE	UNIT PRICE EXTENSION (<i>Quantity times Unit Price</i>)

DESCRIPTION: <input type="checkbox"/> Base Bid or <input type="checkbox"/> Alt.# ____				
REF. NO.	QUANTITY:	UNIT OF MEASURE:	UNIT PRICE	UNIT PRICE EXTENSION (<i>Quantity times Unit Price</i>)

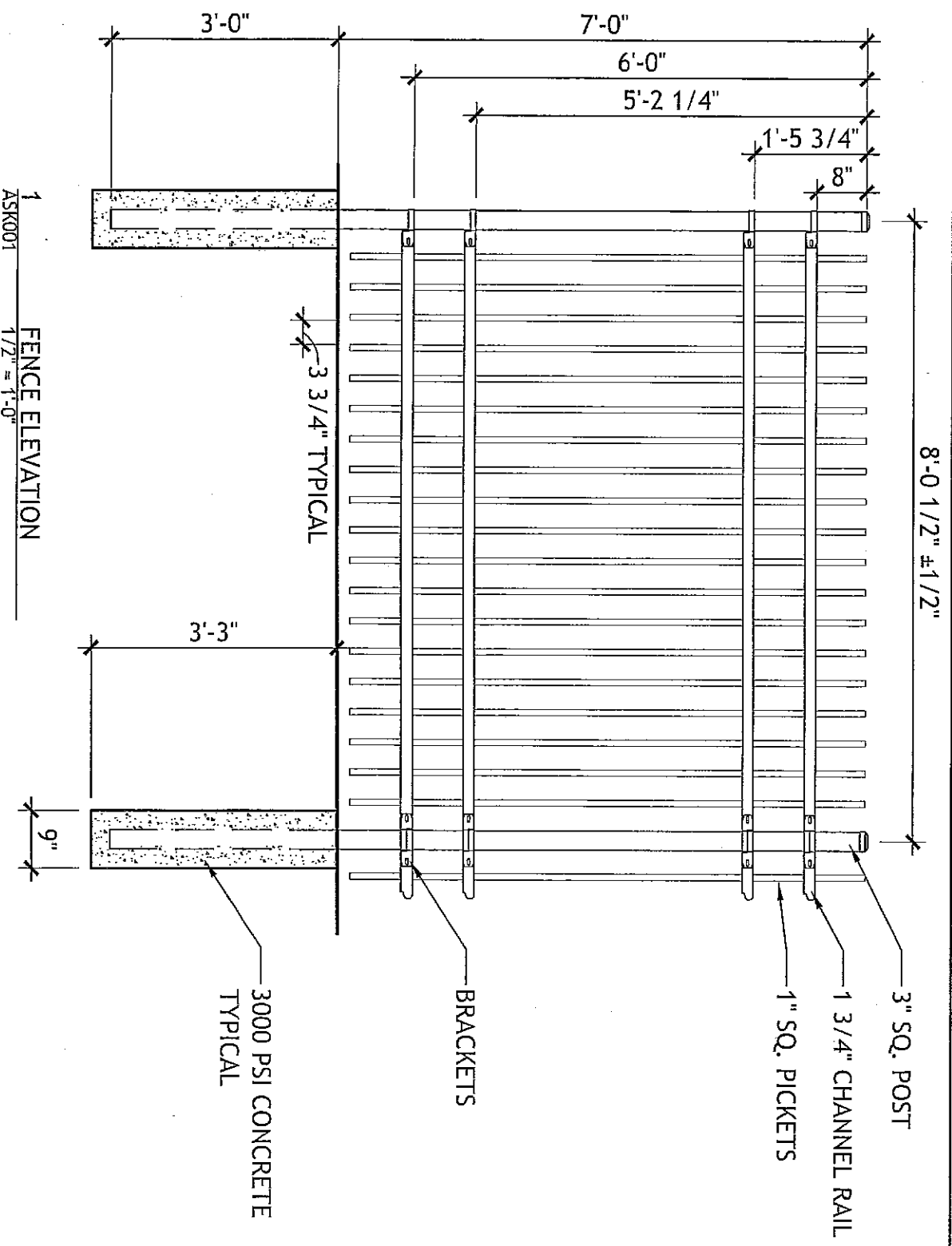
DESCRIPTION: <input type="checkbox"/> Base Bid or <input type="checkbox"/> Alt.# ____				
REF. NO.	QUANTITY:	UNIT OF MEASURE:	UNIT PRICE	UNIT PRICE EXTENSION (<i>Quantity times Unit Price</i>)

DESCRIPTION: <input type="checkbox"/> Base Bid or <input type="checkbox"/> Alt.# ____				
REF. NO.	QUANTITY:	UNIT OF MEASURE:	UNIT PRICE	UNIT PRICE EXTENSION (<i>Quantity times Unit Price</i>)

DESCRIPTION: <input type="checkbox"/> Base Bid or <input type="checkbox"/> Alt.# ____				
REF. NO.	QUANTITY:	UNIT OF MEASURE:	UNIT PRICE	UNIT PRICE EXTENSION (<i>Quantity times Unit Price</i>)

DESCRIPTION: <input type="checkbox"/> Base Bid or <input type="checkbox"/> Alt.# ____				
REF. NO.	QUANTITY:	UNIT OF MEASURE:	UNIT PRICE	UNIT PRICE EXTENSION (<i>Quantity times Unit Price</i>)

Wording for "DESCRIPTION" is to be provided by the Owner.
All quantities are estimated. The contractor will be paid based upon actual quantities as verified by the Owner
AUTHORITY NOTE: Promulgated in accordance with R.S. 38:2212.
HISTORICAL NOTE: Promulgated by the Office of the Governor, Division of Administration, Office of Facility Planning and Control, LR 35:1522 (August 2009).



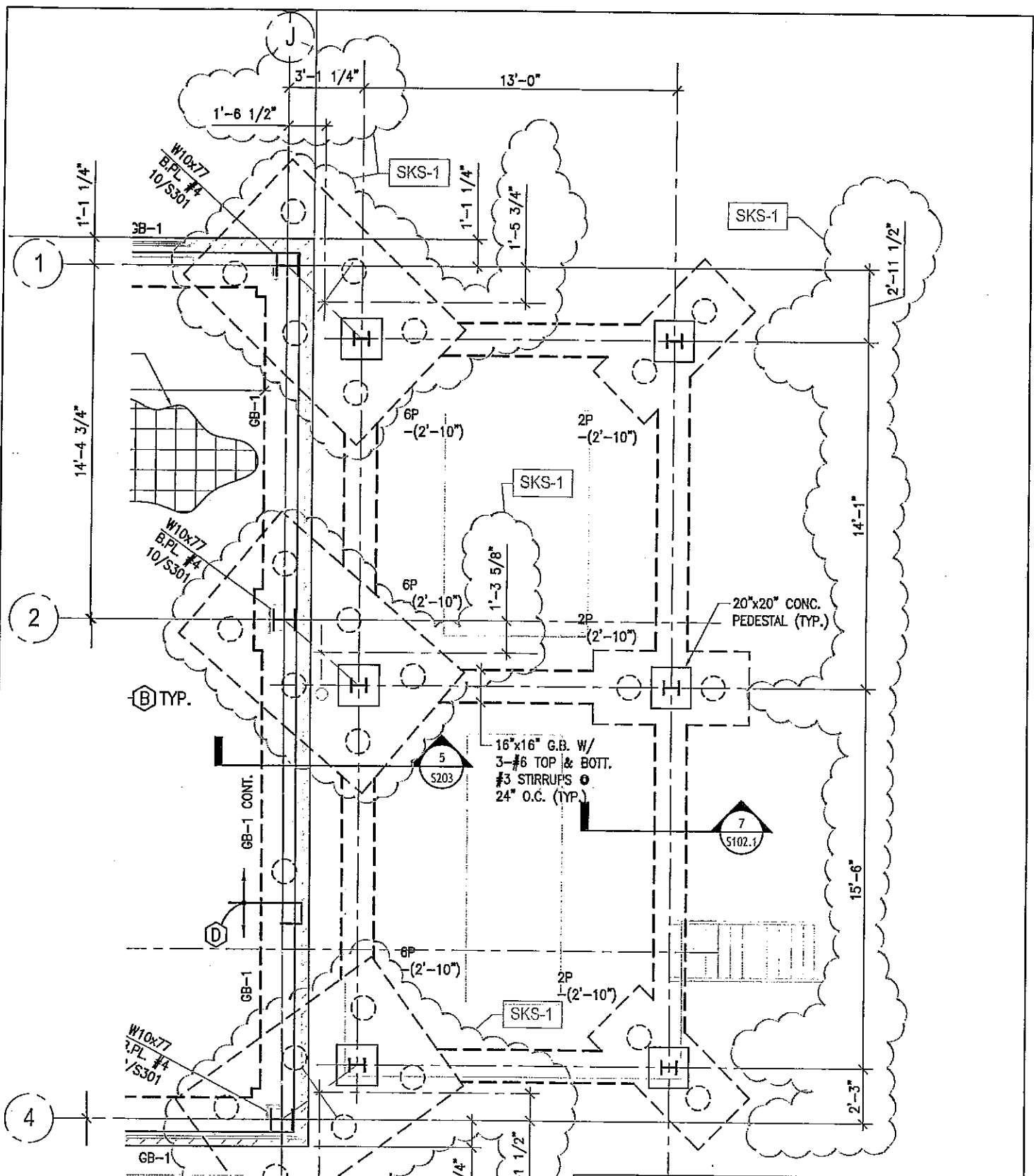
PROJECT DESIGN GROUP, LLC
 300 LAFAYETTE STREET, SUITE 200
 NEW ORLEANS, LOUISIANA 70130
 THOMPSON (504) 523-6472 FAX (504) 529-1181
 BROWN ARCHITECTS


JEFFERSON PARISH SHERIFFS OFFICE
FOURTH DISTRICT STATION
 METARIE, LOUISIANA 70003

sketch description

ATTACHMENT_#3

project number	date	drawing number
51122.03	03-10-10	ASK001
file name		
ASK001.DWG		
issued for		this drawing modifies:
ADDENDUM_#1		




1  **MECHANICAL PLATFORM FOUNDATION**
 SKS-1 3/16"=1'-0" REVISION TO PLAN 6/S102.1

DATE: 03-10-10

**JEFFERSON PARISH SHERIFF'S OFFICE
 FOURTH DISTRICT SUBSTATION**
 METAIRIE, LOUISIANA 70003

SCHRENK & PETERSON
 CONSULTING ENGINEERS, INC.

 4141 BIENVILLE AVE.
 NEW ORLEANS, LA 70119
 PHONE: 504.482.7856
 FAX: 504.482.7325
 www.schrenkandpeterson.com

DATE: 03-10-10

SKS-1

ATTACHMENT #4