

# MATERIAL LEGEND

- AGS-1 • ALUMINUM CURTAIN WALL SYSTEM, 3' X 6 1/2" TYPICAL MULLION
- BLK-1 • 8" CMU GREY BLOCK
- BRK-1 • MODULAR BRICK VENEER
- BRK-2 • BRICK VENEER ROWLOCK COURSE
- GL-1 • GLAZING, LOW-E
- IWS-1 • INTEGRATED WINDOW SYSTEM WITHIN 3" EXTERIOR INSULATED METAL PANEL SYSTEM
- MF-1 • METAL FABRICATIONS; RAINWATER DOWNSPOUTS LEADERHEADS AND ASSOCIATED FLASHINGS.
- MF-2 • METAL FABRICATIONS; COPINGS AND ASSOCIATED TRIM
- MTL-1 • 3" EXTERIOR INSULATED METAL PANEL SYSTEM, 9989 PLATINUM
- MTL-2 • PERFORATED STAINLESS STEEL SCREEN
- STL-1 • STEEL BEAMS AND COLUMNS; SEE STRUCTURAL

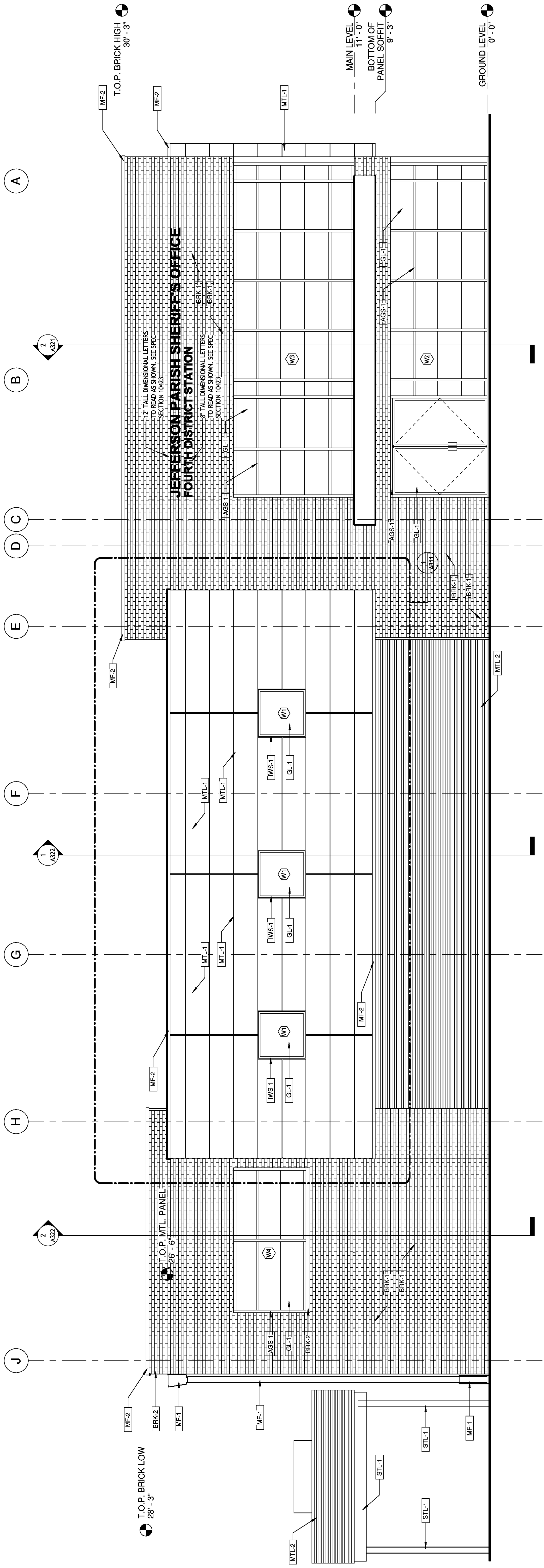
**SIZELER THOMPSON BROWN ARCHITECTS**  
**PROJECT DESIGN GROUP**  
 300 LAVERGNE STREET, SUITE 200  
 NEW ORLEANS, LOUISIANA 70130  
 THOMPSON BROWN ARCHITECTS  
 (504) 523-6472 FAX (504) 529-1181

No.	Revisions	Description	Date

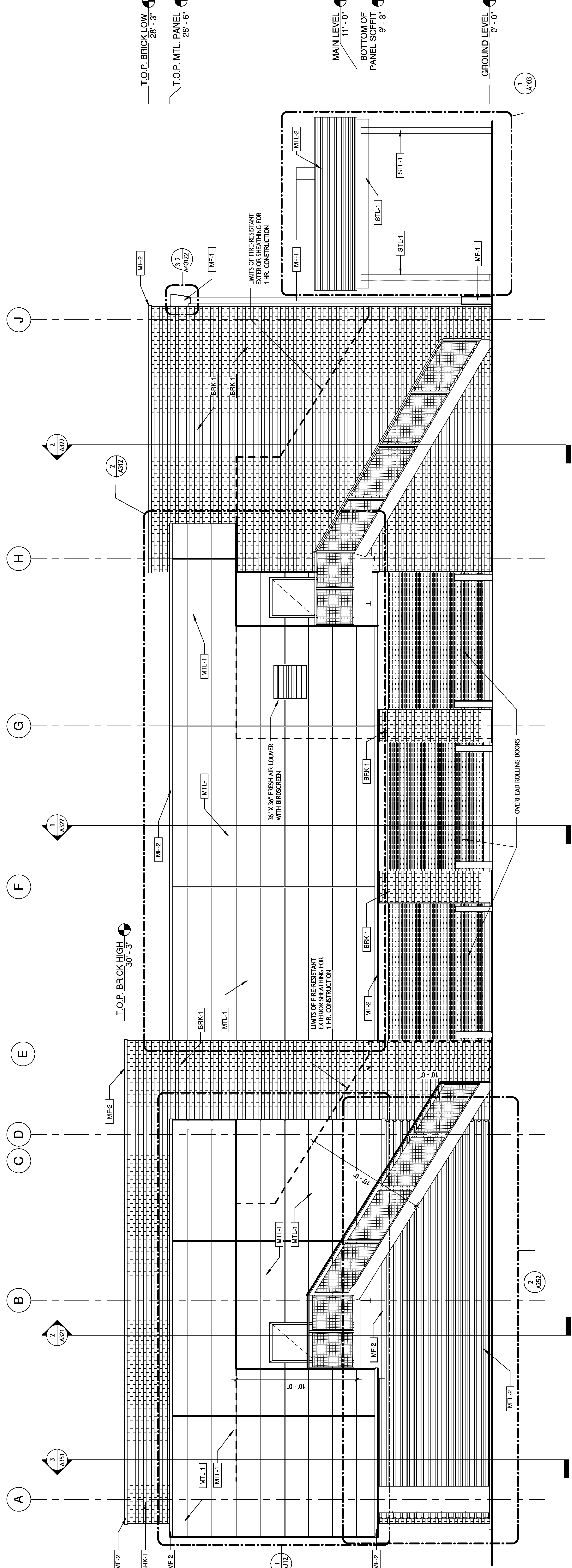
JEFFERSON PARISH SHERIFF'S OFFICE  
 FOURTH DISTRICT STATION  
 METAIRIE, LOUISIANA 70003

EXTERIOR ELEVATIONS

File name	Sub-station.rvt	drawing number	A301
Project number	51122.03	Phase	CD
Date	02-25-10		



2 NORTH ELEVATION  
 A301 1/4" = 1'-0"



1 SOUTH ELEVATION  
 A301 1/4" = 1'-0"