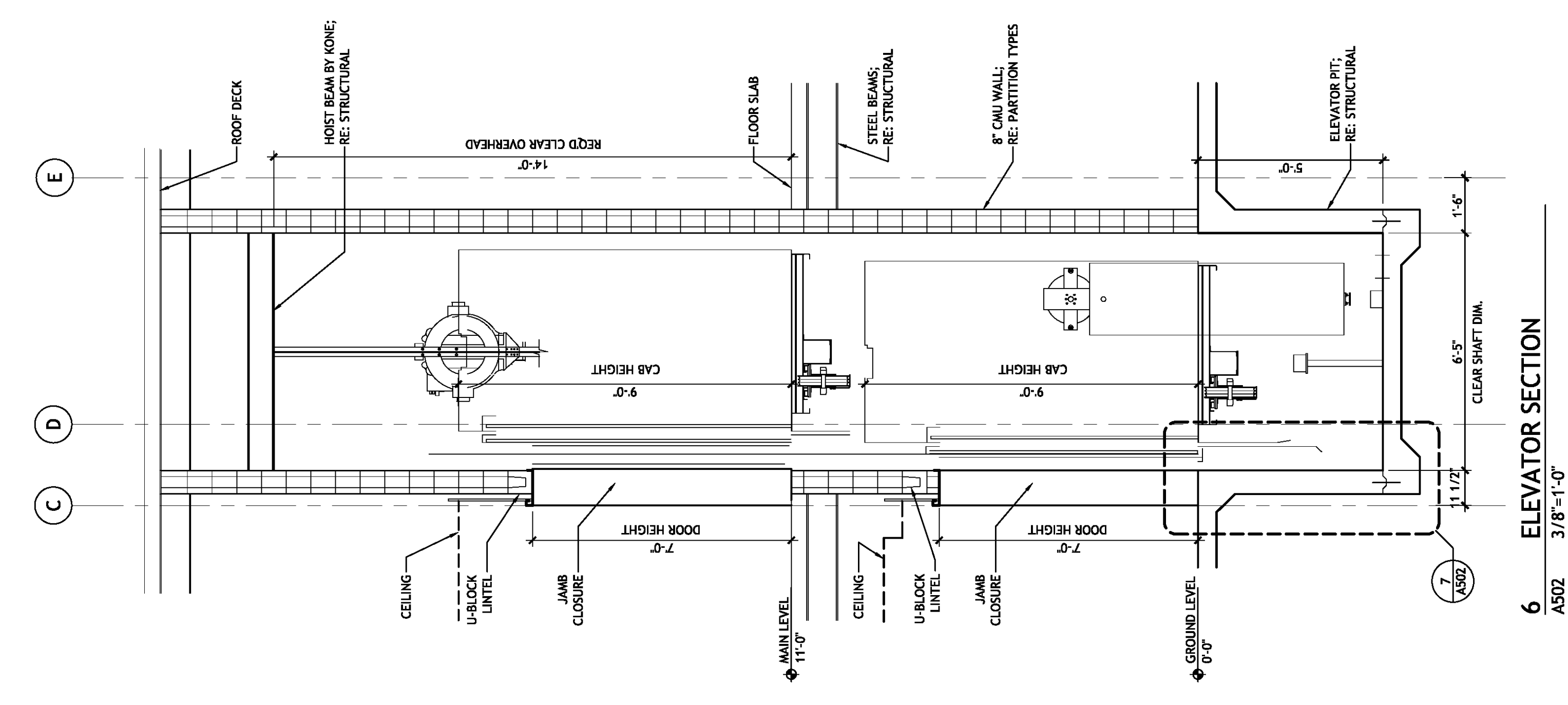


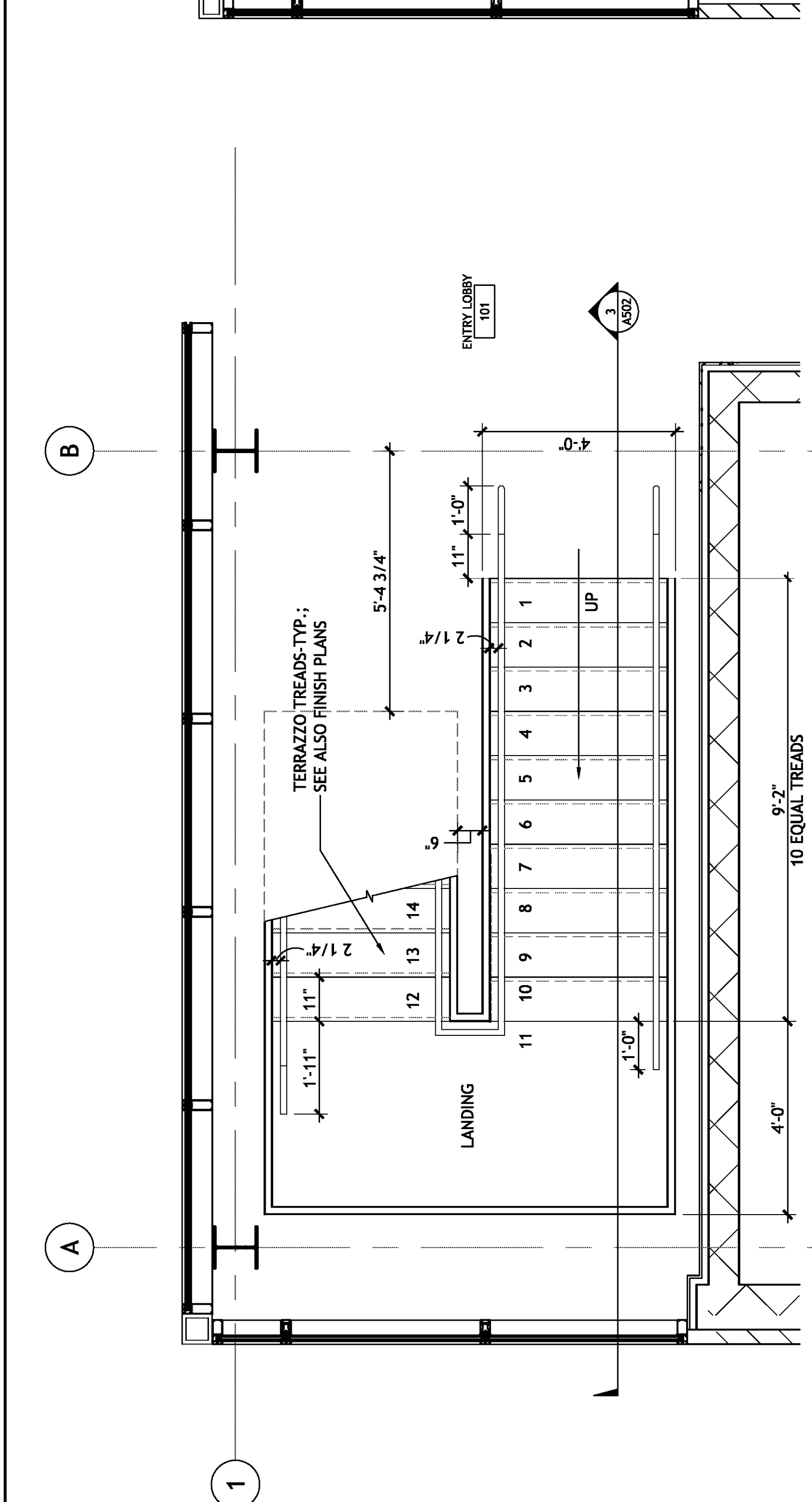
4 ELEVATOR PLAN -GROUND LEVEL
A502 1/2"=1'-0"

5 ELEVATOR PLAN -MAIN LEVEL
A502 1/2"=1'-0"

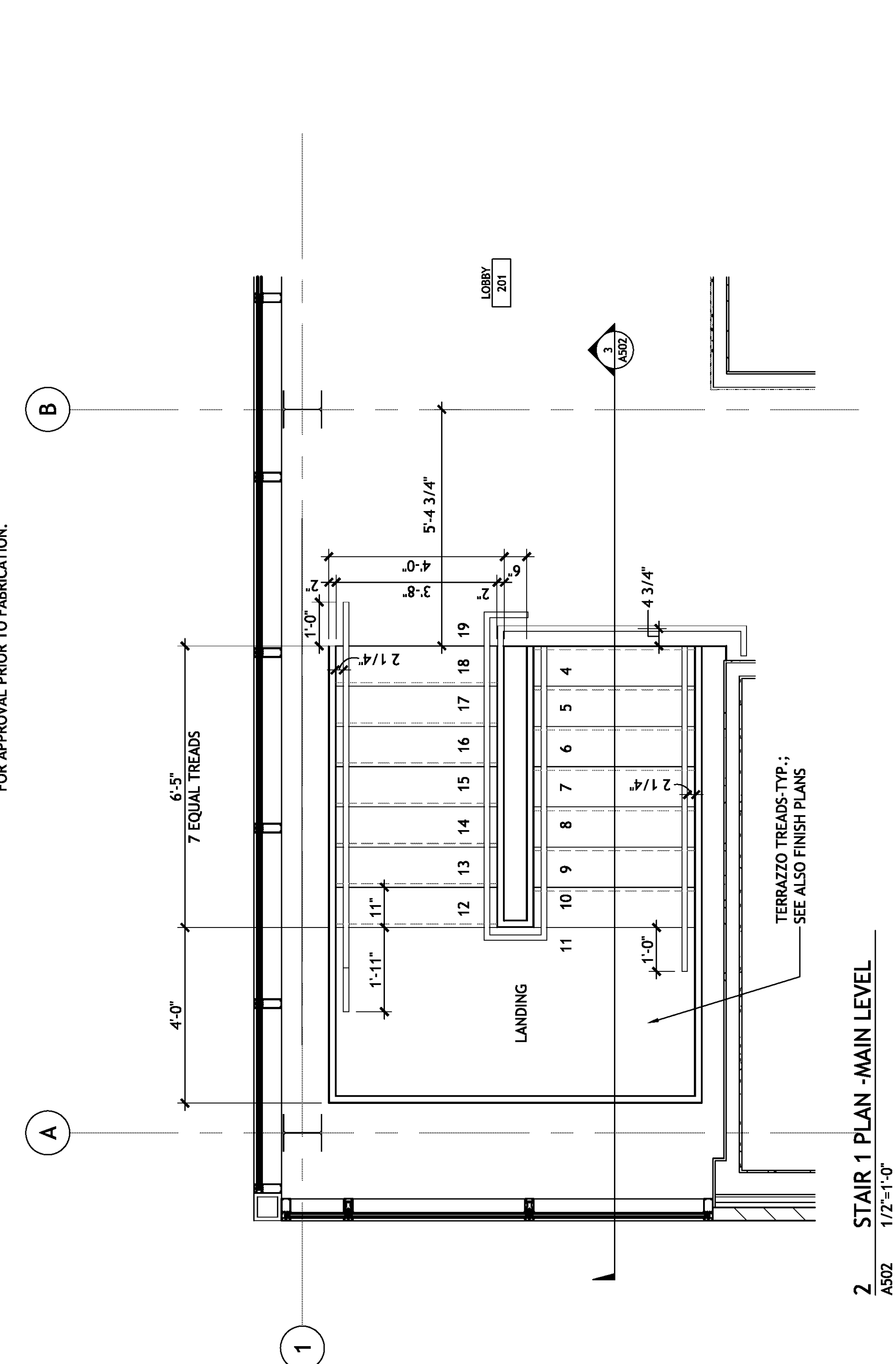


6 ELEVATOR SECTION
A502 3/8"=1'-0"

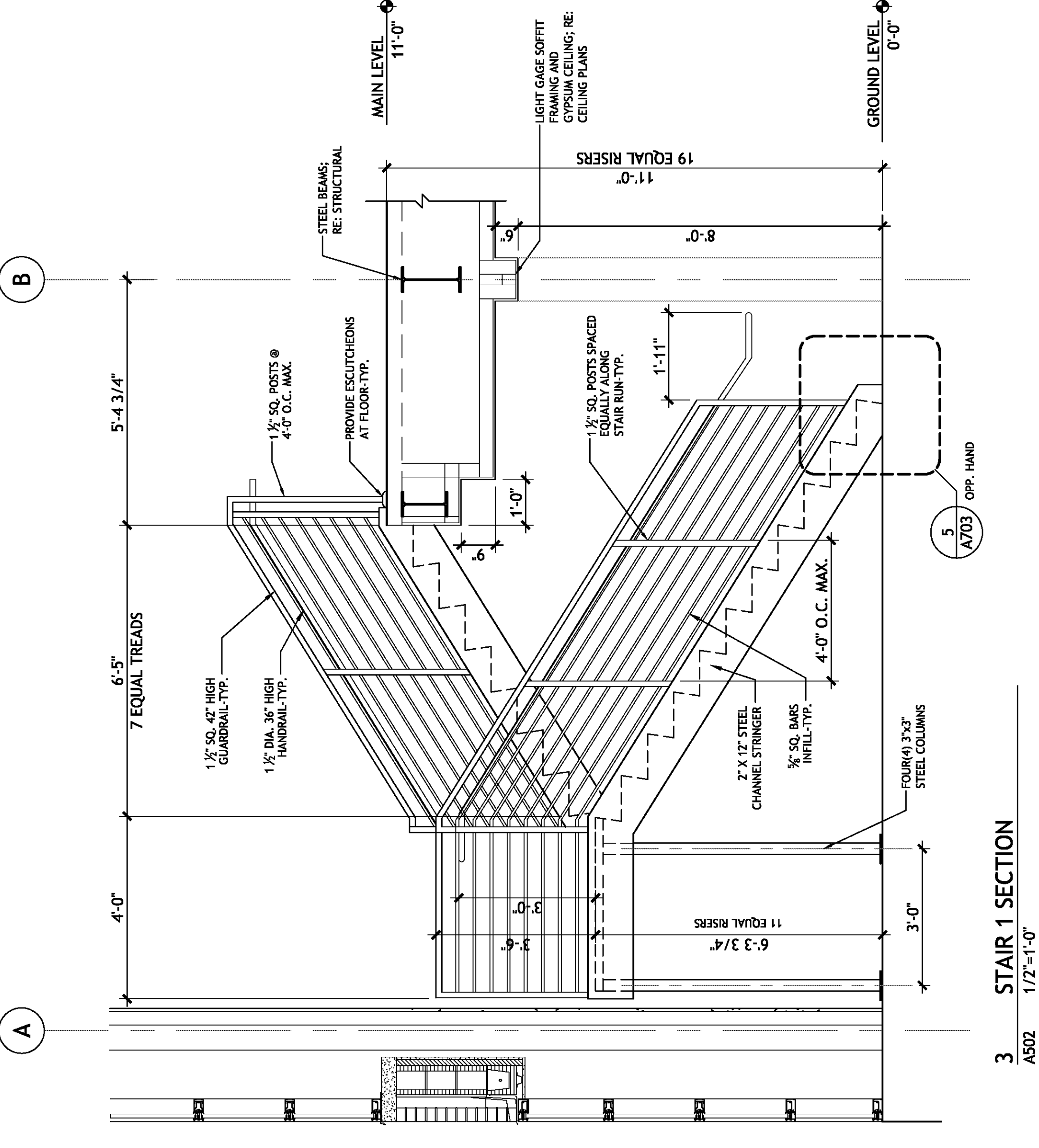
7 ELEVATOR PIT DETAIL
A502 3/4"=1'-0"



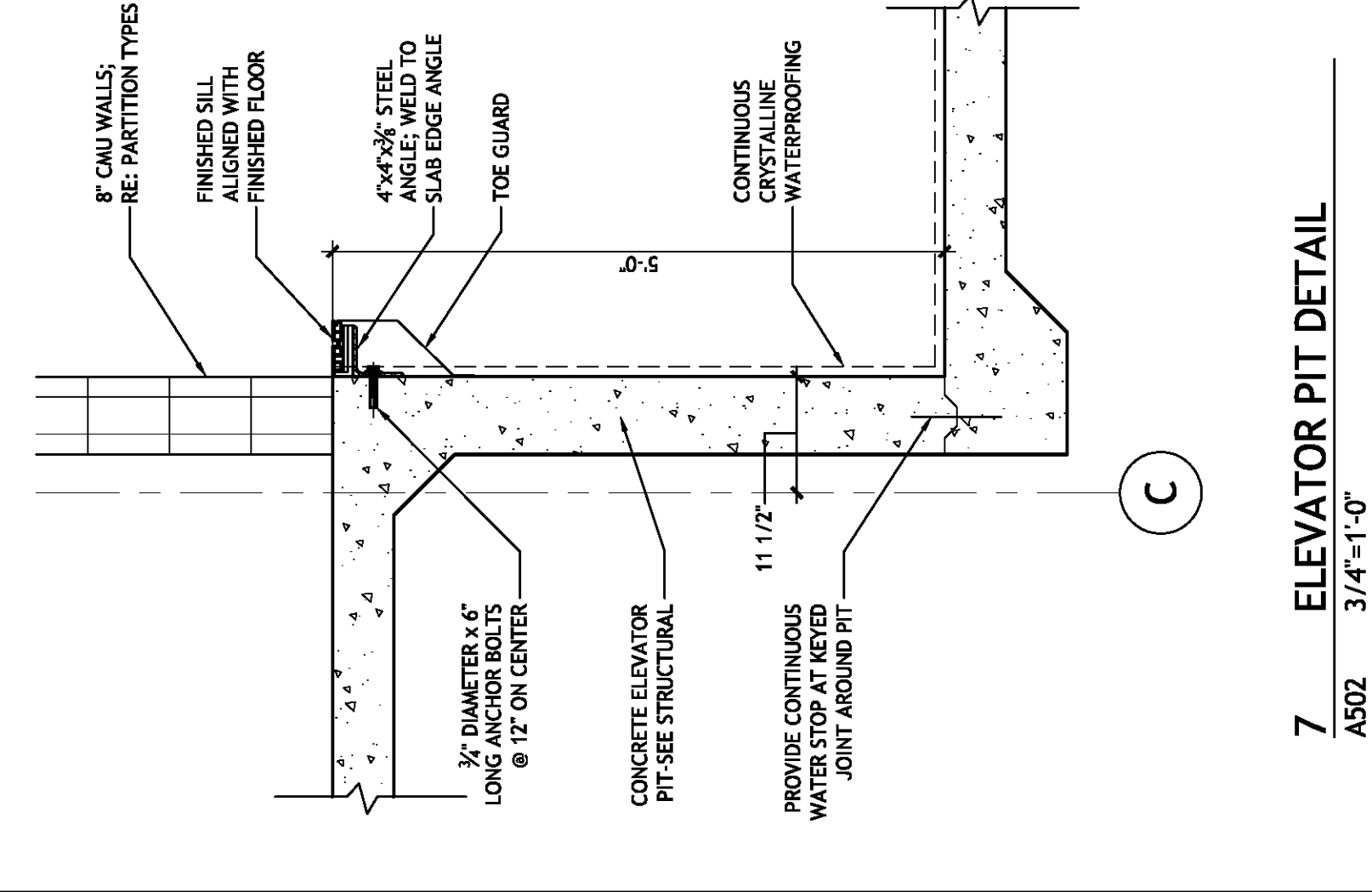
1 STAIR 1 PLAN -GROUND LEVEL
A502 1/2"=1'-0"



2 STAIR 1 PLAN -MAIN LEVEL
A502 1/2"=1'-0"



3 STAIR 1 SECTION
A502 1/2"=1'-0"



<p>REGIONAL DESIGN GROUP, LLC 300 LAFAYETTE STREET, SUITE 200 NEW ORLEANS, LOUISIANA 70130 (504) 523-6472 FAX (504) 529-1181</p>		<p>revisions</p> <table border="1"> <tr><th>NO.</th><th>DATE</th><th>REVISION</th></tr> <tr><td>1</td><td></td><td></td></tr> <tr><td>2</td><td></td><td></td></tr> <tr><td>3</td><td></td><td></td></tr> <tr><td>4</td><td></td><td></td></tr> <tr><td>5</td><td></td><td></td></tr> </table>		NO.	DATE	REVISION	1			2			3			4			5		
NO.	DATE	REVISION																			
1																					
2																					
3																					
4																					
5																					
<p>JEFFERSON PARISH SHERIFFS' OFFICE 4TH DISTRICT SUBSTATION 6228 AIRLINE DRIVE METAIRIE, LOUISIANA 70003</p>		<p>VERTICAL CIRCULATION - INTERIOR STAIR 1 AND ELEVATOR</p>																			
<p>FILE NAME: A502.dwg PROJECT NUMBER: 51122.03 DATE: 02-25-10 PHASE: CD</p>		<p>DRAWING NUMBER: A502</p>																			