



REGISTERED PROFESSIONAL ENGINEER
 JOHN S. TIGHE, JR.
 REG. NO. 4635
 STATE OF LOUISIANA
 MECHANICAL ENGINEERING

BPM
 CORPORATION, L.L.C.
 PROFESSIONAL LAND SURVEYORS
 524 WILLIAMS BLDG.
 SUITE 200
 MONROE, LOUISIANA 70001
 TEL: (504) 487-8008
 FAX: (504) 487-0668
 E-mail: bpr@bpmcorp.com
 www.bpmcorp.com

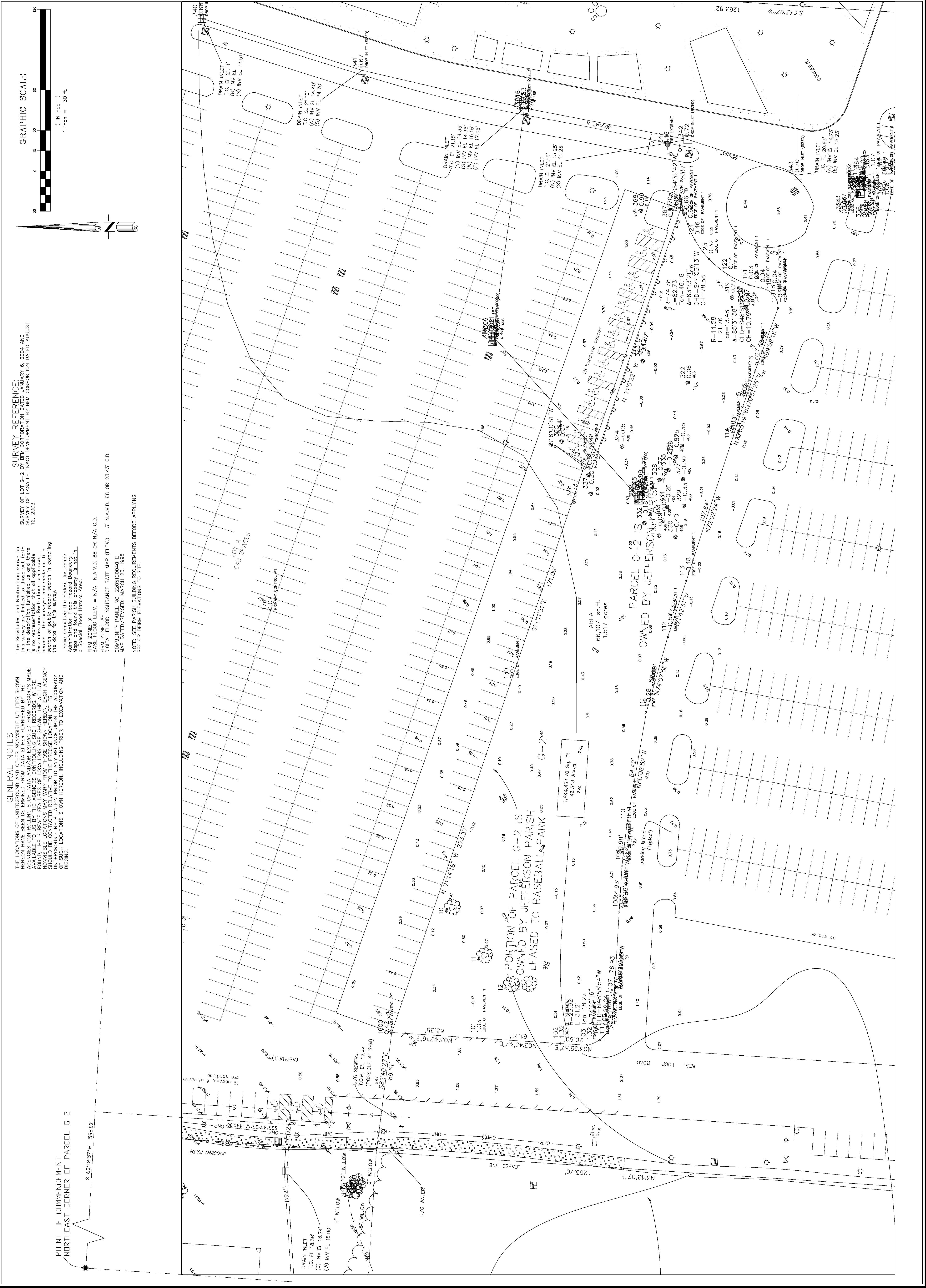
SURVEY OF THE JEFFERSON PARISH
 OF PARCEL G-2 (BASEBALL STADIUM SITE)
 ELWOOD-LAFRANIERE PLANTATION
 JEFFERSON PARISH, LOUISIANA

certify that this professional land survey was made by me or under my direct supervision and that I am a duly Licensed Professional Land Surveyor in Louisiana. I certify that this survey complies with the requirements of the Louisiana Surveying Code, Title 46, L.A.C. 46:101 through 46:109, and the Louisiana Surveying Code, Title 46, L.A.C. 46:110 through 46:119, and the Louisiana Surveying Code, Title 46, L.A.C. 46:120 through 46:129.

MARK	DESCRIPTION	DATE	BY	SCALE
1	BASE FLOOD INFORMATION	9-22-09	J.T.S.	1" = 30'

REVISION RECORD

DATE: JUNE 24, 2009
 DRAWN BY: J.T.S.
 CHECKED BY:
 PROJECT NO: 6801
 SHEET 1 OF 1



GENERAL NOTES

THE LOCATIONS OF UTILITIES SHOWN HEREON HAVE BEEN DETERMINED FROM DATA EITHER FURNISHED BY THE AGENCE CONTROLLING SUCH DATA AND/OR EXTRACTED FROM RECORDS MADE BY THE AGENCE. THE SURFACE FEATURES OF LOCATIONS ARE SHOWN, THE ACTUAL LOCATION OF UTILITIES SHOULD BE CONTACTED RELATIVE TO THE PRECISE LOCATION OF UTILITIES. LOCATIONS SHOWN HEREON ARE NOT TO BE USED FOR CONSTRUCTION AND DIGGING.

THE SURVEYOR HAS RECHECKED THE DATA AND FOUND IT TO BE CORRECT. ANY DISCREPANCIES NOTED WERE CORRECTED. THE SURVEYOR HAS FOUND THIS PROPERTY TO BE 13,300.00 SQ. FT.

BASE FLOOD ELEV. = N/A N.A.V.D. 88 OR N/A C.D.
 FIRM ZONE = X
 FIRM ZONE MAP AT INSURANCE RATE MAP (ELV.) = 3 N.A.V.D. 88 OF 2/14/17 C.D.
 COMMUNITY PANEL NO. 2205030000 E
 MAP DATED/REVISED: MARCH 23, 1985

NOTE: SEE PARISH BUILDING REQUIREMENTS BEFORE APPLYING BPE OR IF PW ELEVATIONS TO SITE.

SURVEY REFERENCE:
 SURVEY OF LOT G-2 BY BPM CORPORATION DATED JANUARY 6, 2004 AND SURVEY OF LUSALLE TRACT DEVELOPMENT BY BIM CORPORATION DATED AUGUST 24, 2003.

GRAPHIC SCALE
 (IN FEET)
 1" = 30'

