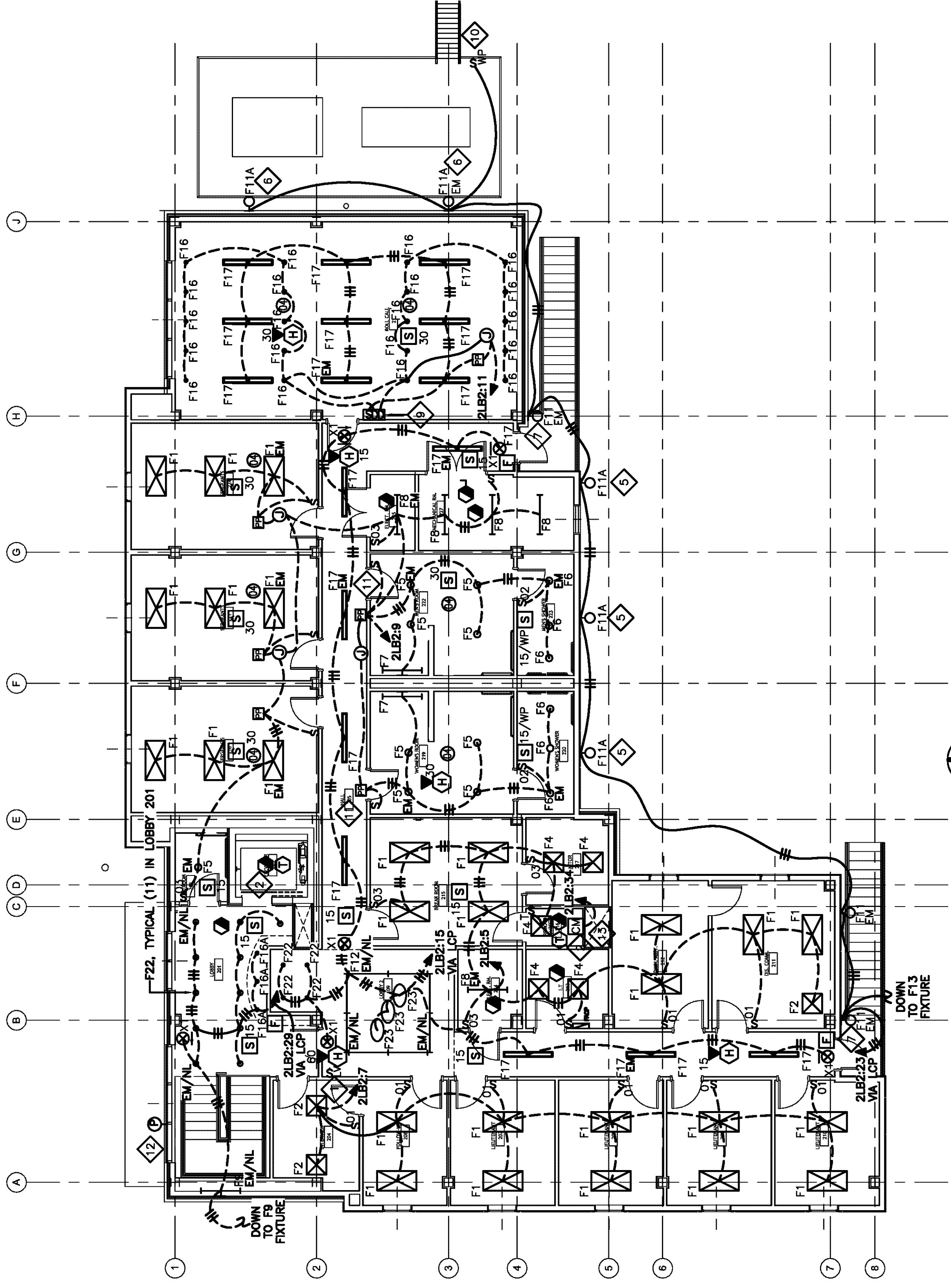


**SHEET E201 NOTES:**

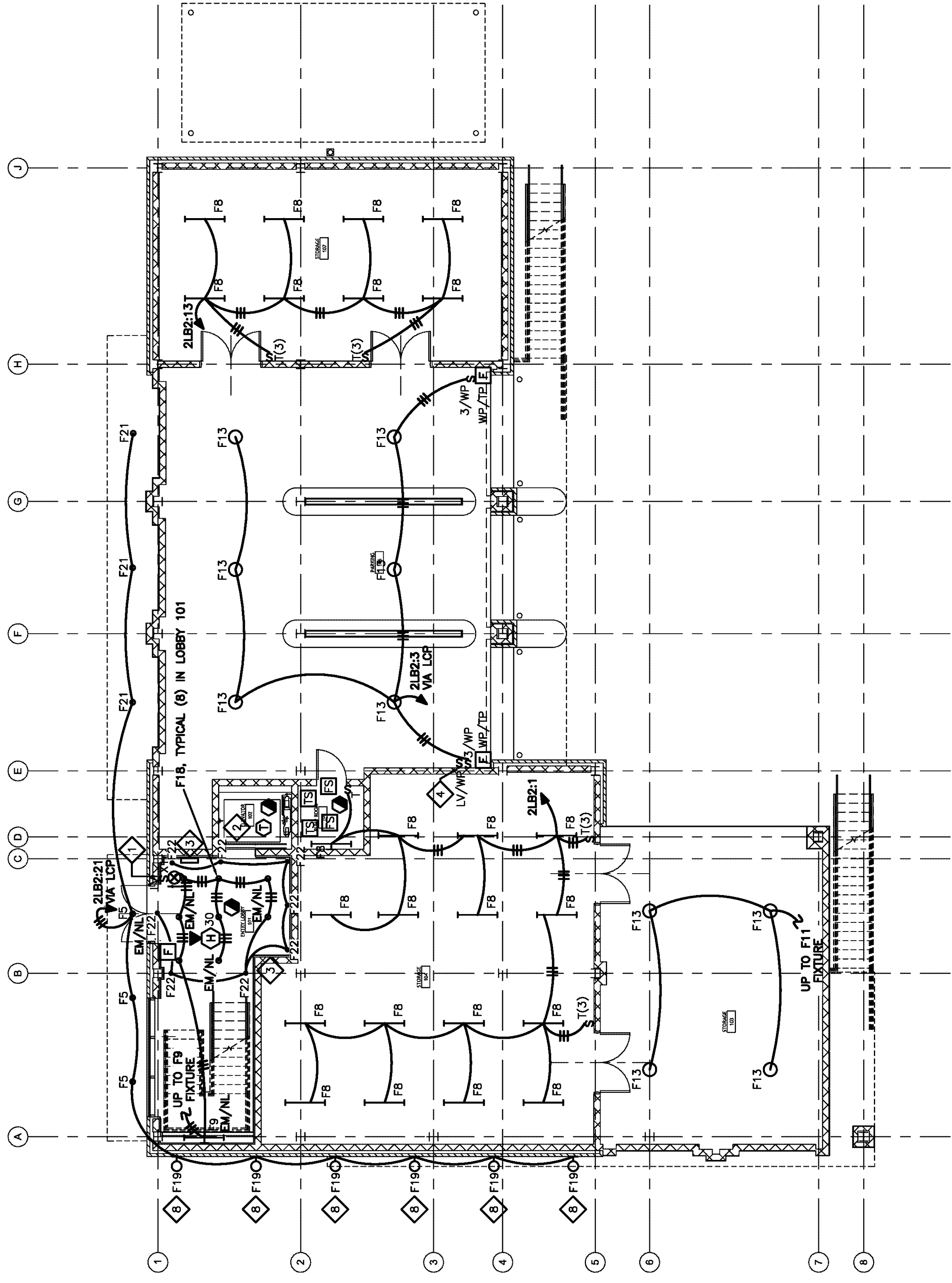
- COORDINATE WITH DIVISION 15 FOR INSTALLATION OF LIGHT FIXTURES IN MECHANICAL SPACES.
- LOCATE CEILING MOUNTED OCCUPANCY SENSORS PER MANUFACTURER'S RECOMMENDATIONS.
- LOCATE CEILING MOUNTED OCCUPANCY SENSORS PER MANUFACTURER'S RECOMMENDATIONS.
- LOCATE CEILING MOUNTED OCCUPANCY SENSORS PER MANUFACTURER'S RECOMMENDATIONS.

**SPECIFIC NOTES (SHEET E201 ONLY):**

- 6 BUTTON PROGRAMMABLE SWITCH WITH LOW VOLTAGE WIRING TO LCP FOR LCP CONTROL. PROGRAM PER OWNER'S INSTRUCTIONS.
- HEAT DETECTORS SHALL BE SET TO ALARM PRIOR TO ACTIVATION OF ADJACENT SPRINKLER HEAD.
- FIRE ALARM REMOTE ANNUNCIATOR
- 6 BUTTON PROGRAMMABLE SWITCH WITH LOW VOLTAGE WIRING TO LCP FOR LCP CONTROL OF OUTDOOR SITE LIGHTING. EXTENSION BUILDING LIGHT CONTROLS, AND COVERED STAIRWELL. PROGRAM PER OWNER'S DIRECTION.
- MOUNT FIXTURE 36" ABOVE FINISHED BOTTOM EDGE OF CANOPY. MEASUREMENT FROM CENTER LINE OF FIXTURE.
- MOUNT FIXTURE 96" ABOVE FINISHED FLOOR OF GENERATOR PLATFORM. MEASUREMENT FROM CENTER LINE OF FIXTURE.
- MOUNT FIXTURE 4" BELOW FINISHED BOTTOM EDGE OF CANOPY. MEASUREMENT FROM TOP OF FIXTURE.
- MOUNT FIXTURE 36" ABOVE FINISHED GRADE OF WALKWAY. MEASUREMENT FROM BOTTOM OF FIXTURE.
- PROVIDE MONOLITHIC COVER PLATE.
- MOUNT SWITCH TO RAILING OF PLATFORM.
- SEE SHEET E201 FOR SLAVE PACK FOR EXHAUST FAN.
- LOCATE PHOTOCELL ON ROOF WITH CLEAR VIEW OF NORTHERN SKY. INSTALL PER MANUFACTURER'S RECOMMENDATIONS.
- COMMAND MODULE FOR ELEVATOR SHUNT TRIP OPERATION. COMMAND MODULE SHALL SHUNT TRIP THE ELEVATOR MAIN CIRCUIT BREAKER UPON ACTIVATION OF ANY HEAT DETECTOR IN ELEVATOR SHAFT OR ELEVATOR EQUIPMENT ROOM.



2 SECOND FLOOR PLAN  
1/8"=1'-0"  
LIGHTING & FIRE ALARM



1 FIRST FLOOR PLAN  
1/8"=1'-0"  
LIGHTING & FIRE ALARM



**HUSEMAN & Associates**  
MECHANICAL • ELECTRICAL • PLUMBING • FIRE PROTECTION  
Job No. 090603  
Designed By AC  
Checked By AC

3925 N. I-10 SERVICE RD  
METairie, LA 70002  
(504) 456-3119  
FAX (504) 456-3122



**REGIONAL DESIGN GROUP, LLC**  
300 LAFAYETTE STREET, SUITE 200  
NEW ORLEANS, LOUISIANA 70130  
(504) 523-6472 FAX (504) 529-1181

no.	revision	date
1		
2		
3		
4		
5		

JEFFERSON PARISH SHERIFF'S OFFICE  
4TH DISTRICT SUBSTATION  
JEFFERSON PARISH, LOUISIANA

FIRST & SECOND FLOOR PLAN  
LIGHTING & FIRE ALARM

file name	drawing number
090603E201	
project number	51122.03
date	02-04-10
phase	CD

E201