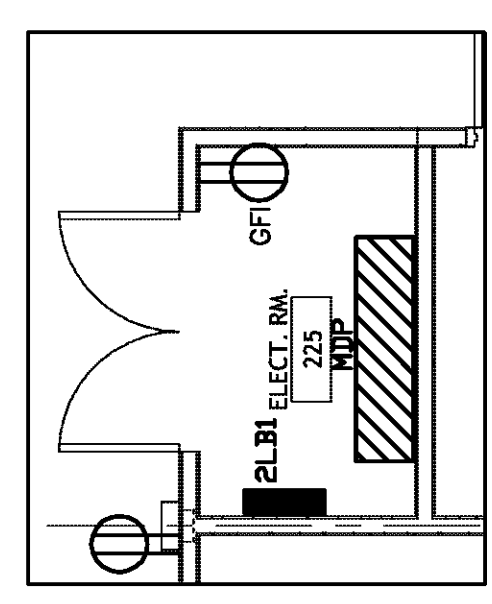


SHEET NOTES (SHEET E301 ONLY):

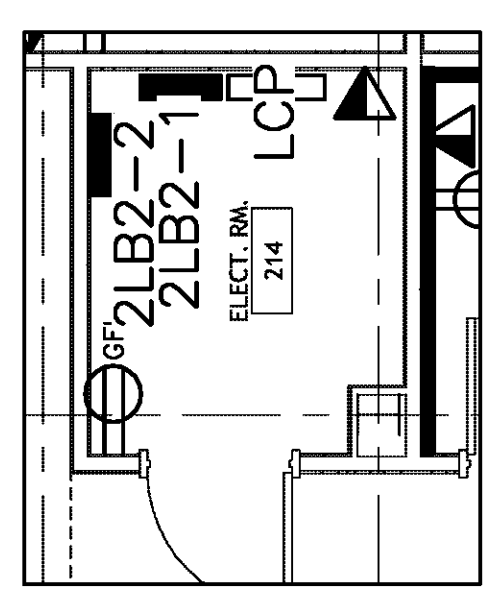
1. SWITCHES CONNECTED TO EXHAUST FANS ARE FOR LOCAL DISCONNECT AND SHALL BE MOUNTED NEAR TO FAN.
2. PIT LIGHT SHALL NOT BE CONNECTED TO LOAD SIDE OF GFI.
3. RECEPTACLE SERVES THE ELEVATOR PIT SUMP PUMP AND SHALL BE INSTALLED NEAR THE PUMP. SEE DIVISION 15 FOR EXACT LOCATION.
4. PROVIDE TELEPHONE BACKBOARD PER DIVISION 16716, CONNECT #6 CU GROUND WIRE FROM GROUNDING BAR TO PANEL 2LB2 GROUNDING BAR.
5. SLAVE PUMP FAN EXHAUST FAN SLAVE PUMP SHALL BE CONTROLLED BY OCCUPANCY SENSOR IN BATHROOM. SEE SHEET E201 FOR POWER PACK.
6. PROVIDE 40A/3P SHUNT TRIP CIRCUIT BREAKER FOR ELEVATOR.

SPECIFIC NOTES (SHEET E301 ONLY):

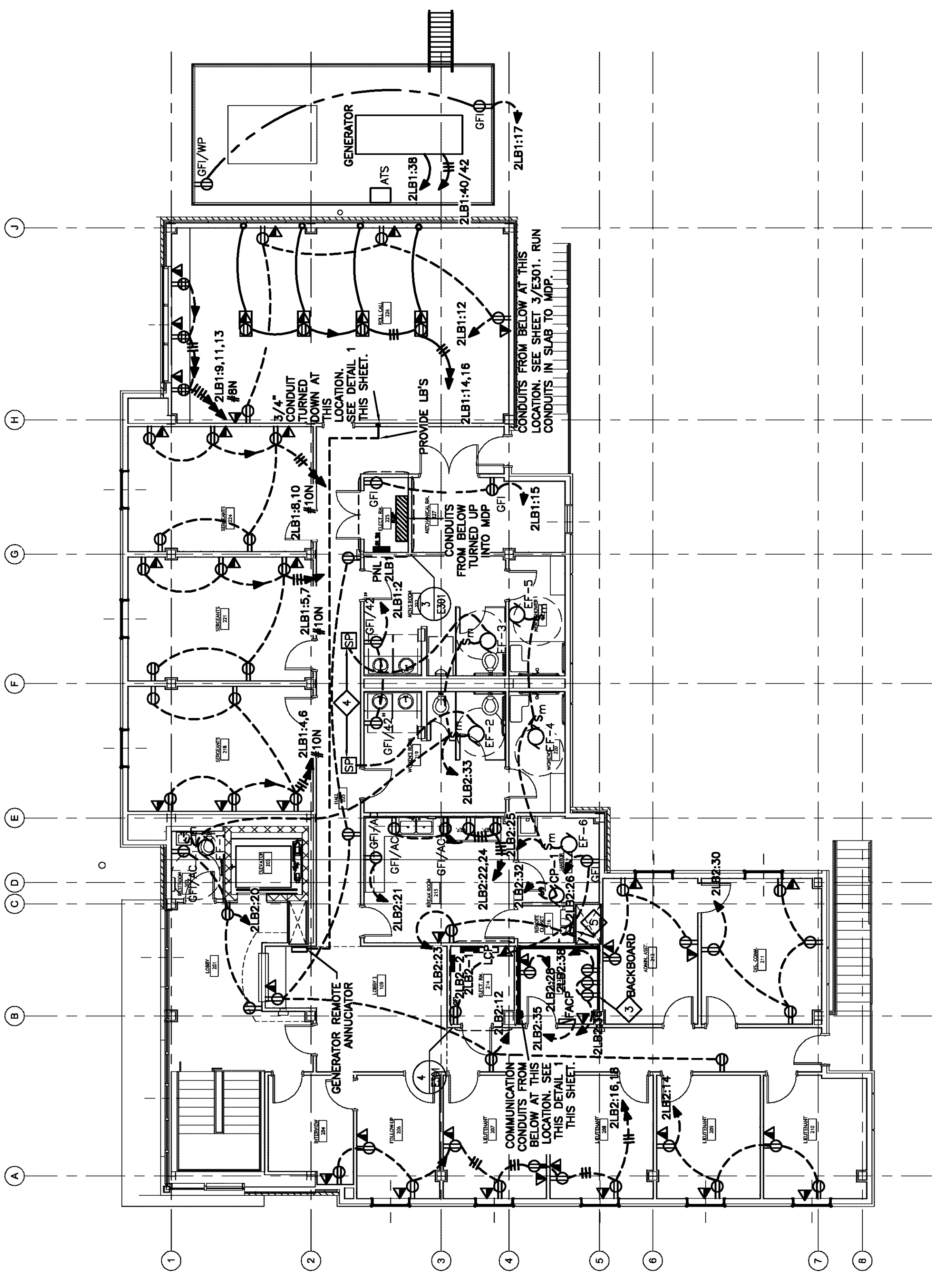
1. PIT LIGHT SHALL NOT BE CONNECTED TO LOAD SIDE OF GFI.
2. RECEPTACLE SERVES THE ELEVATOR PIT SUMP PUMP AND SHALL BE INSTALLED NEAR THE PUMP. SEE DIVISION 15 FOR EXACT LOCATION.
3. PROVIDE TELEPHONE BACKBOARD PER DIVISION 16716, CONNECT #6 CU GROUND WIRE FROM GROUNDING BAR TO PANEL 2LB2 GROUNDING BAR.
4. SLAVE PUMP FAN EXHAUST FAN SLAVE PUMP SHALL BE CONTROLLED BY OCCUPANCY SENSOR IN BATHROOM. SEE SHEET E201 FOR POWER PACK.
5. PROVIDE 40A/3P SHUNT TRIP CIRCUIT BREAKER FOR ELEVATOR.



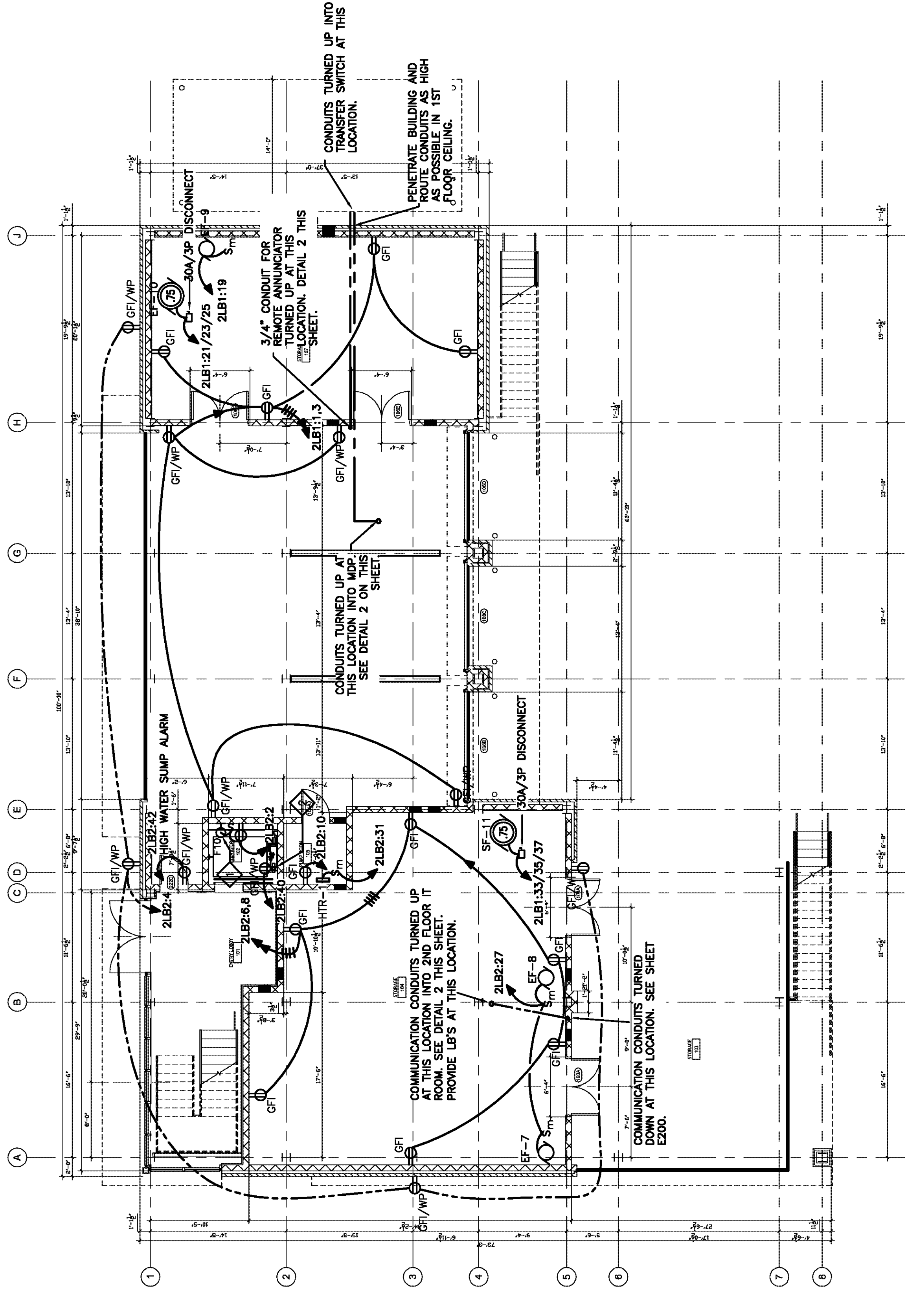
3 MAIN ELECTRICAL ROOM
1/8"=1'-0"
NORTH



4 ELECTRICAL ROOM
1/8"=1'-0"
NORTH



2 SECOND FLOOR PLAN
1/8"=1'-0"
NORTH
E301
POWER & COMMUNICATION



1 FIRST FLOOR PLAN
1/8"=1'-0"
NORTH
E301
POWER & COMMUNICATION

HUSEMAN & Associates
MECHANICAL ELECTRICAL PLUMBING FIRE PROTECTION
Job No. 090603
Drawn By AC
Checked By AC

3925 N. I-10 SERVICE RD
METairie, LA 70002
(504) 456-3119
FAX (504) 456-3122

REGIONAL DESIGN GROUP, LLC
300 LAFAYETTE STREET, SUITE 200
NEW ORLEANS, LOUISIANA 70130
(504) 523-6472 FAX (504) 529-1181

JEFFERSON PARISH SHERIFFS OFFICE
4TH DISTRICT SUBSTATION
JEFFERSON PARISH, LOUISIANA

NO.	REVISIONS	DATE
1	REVISION	
2		
3		
4		
5		

JEFFERSON PARISH SHERIFFS OFFICE
4TH DISTRICT SUBSTATION
JEFFERSON PARISH, LOUISIANA

FIRST & SECOND FLOOR PLAN
POWER & COMMUNICATION

File name	090603E301	drawing number
Project number	51122.03	
Date	02-04-10	
Phase	CD	

E301