

SITE TABULATION DATA:

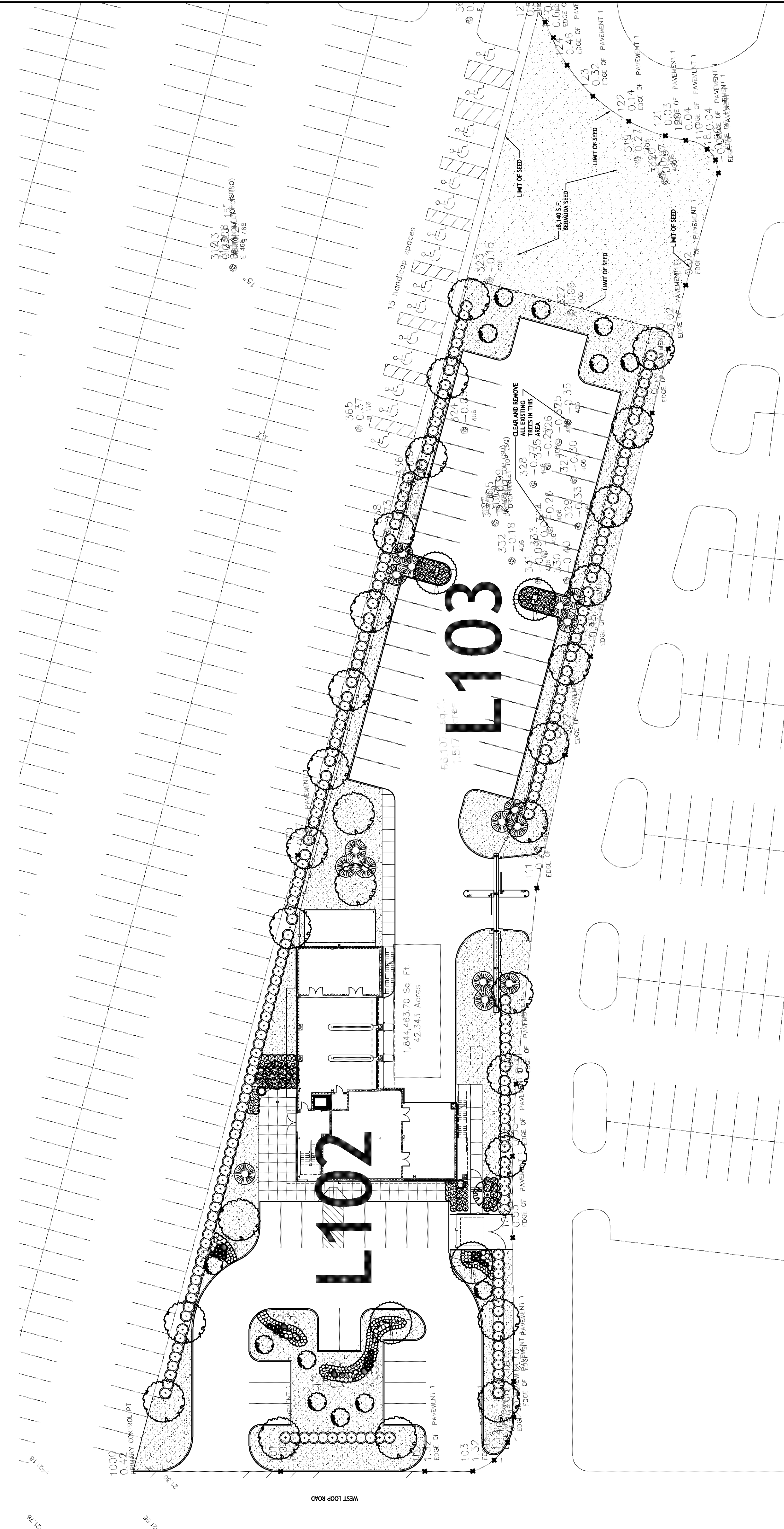
SITE AREA
 SQUARE FOOTAGE: 66,107.2454 S.F.
 ACRES: 1.52 AC.
 % TOTAL: 100%

PERMEABLE AREA
 SQUARE FOOTAGE: 30,163.1142 S.F.
 ACRES: .69 AC.
 % TOTAL: 46%

IMPERMEABLE AREA
 SQUARE FOOTAGE: 35,924.0177 S.F.
 ACRES: .83 AC.
 % TOTAL: 54%

PLANT TABLE

CITY	COMMON NAME	DESCRIPTION
JEFFERSON PARISH SHERIFF'S OFFICE 4TH DISTRICT SUB-STATION		
PLANT LIST (FOR REFERENCE ONLY AND NOT INTENDED AS TAKE-OFF. VERIFY ALL QUANTITIES)		
8.140 S.F. (suppr.)	BERMUDA SEED	SEE SPEC.
	CYNODON DACTYLON	



REGIONAL DESIGN GROUP, LLC
 300 LAFAYETTE STREET, SUITE 200
 NEW ORLEANS, LOUISIANA 70130
 (504) 523-6472 FAX (504) 529-1181

JEFFERSON PARISH SHERIFF'S OFFICE
 4TH DISTRICT SUBSTATION
 628 AIRLINE DRIVE METairie, LOUISIANA 70003

OVERALL LANDSCAPE SITE PLAN

NO.	REVISION	DATE
1		
2		
3		
4		
5		

FILE NAME	DRAWING NUMBER
L101.dwg	L101
PROJECT NUMBER	DATE
51122.03	02-25-10
PHASE	CD