

HUSEMAN & Associates
 MECHANICAL ELECTRICAL PLUMBING FIRE PROTECTION
 Job No. 090063P201
 Drawn By: RM
 Designed By: RM
 Checked By: CRB

3925 N. I-10 SERVICE RD
 SUITE 200
 METairie, LA 70002
 (504) 456-3119
 FAX (504) 456-3122

REGIONAL DESIGN GROUP, LLC
 300 LAFAYETTE STREET, SUITE 200
 NEW ORLEANS, LOUISIANA 70130
 (504) 523-6472 FAX (504) 529-1181

JEFFERSON PARISH SHERIFFS OFFICE
 ARCHITECTS

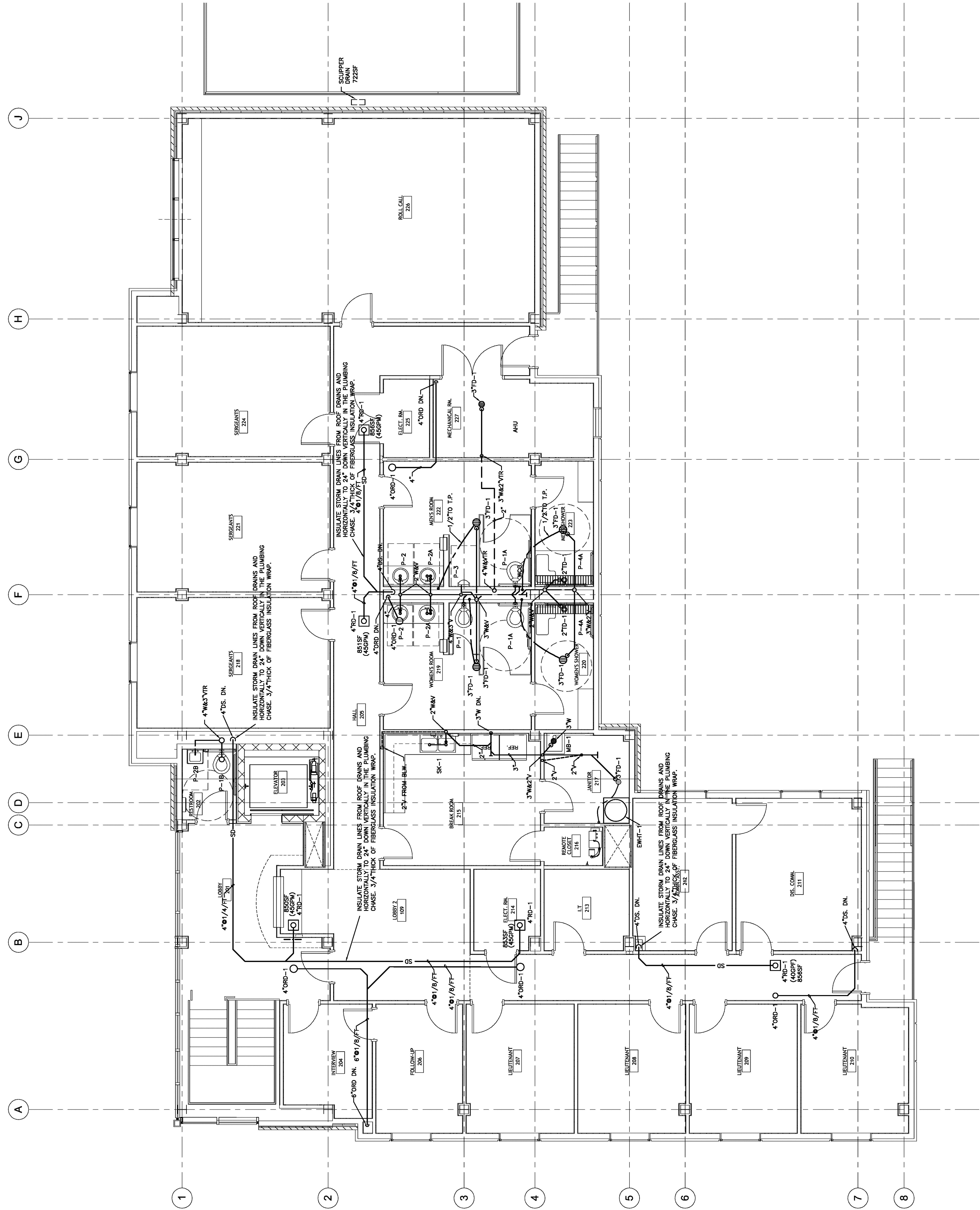
| NO. | REVISION | DATE |
|-----|----------|------|
| 1 | | |
| 2 | | |
| 3 | | |
| 4 | | |
| 5 | | |

JEFFERSON PARISH SHERIFFS OFFICE
 4TH DISTRICT SUBSTATION
 JEFFERSON PARISH, LOUISIANA

SECOND FLOOR PLAN - PLUMBING

| | | | |
|----------------|----------------|----------------|--|
| File name | 090063P201.dwg | drawing number | |
| Project number | 51122.03 | | |
| Date | 02-04-10 | | |
| Phase | CD | | |

P201



1 2ND FLOOR - PLUMBING
 P201 1/4" = 1'-0"