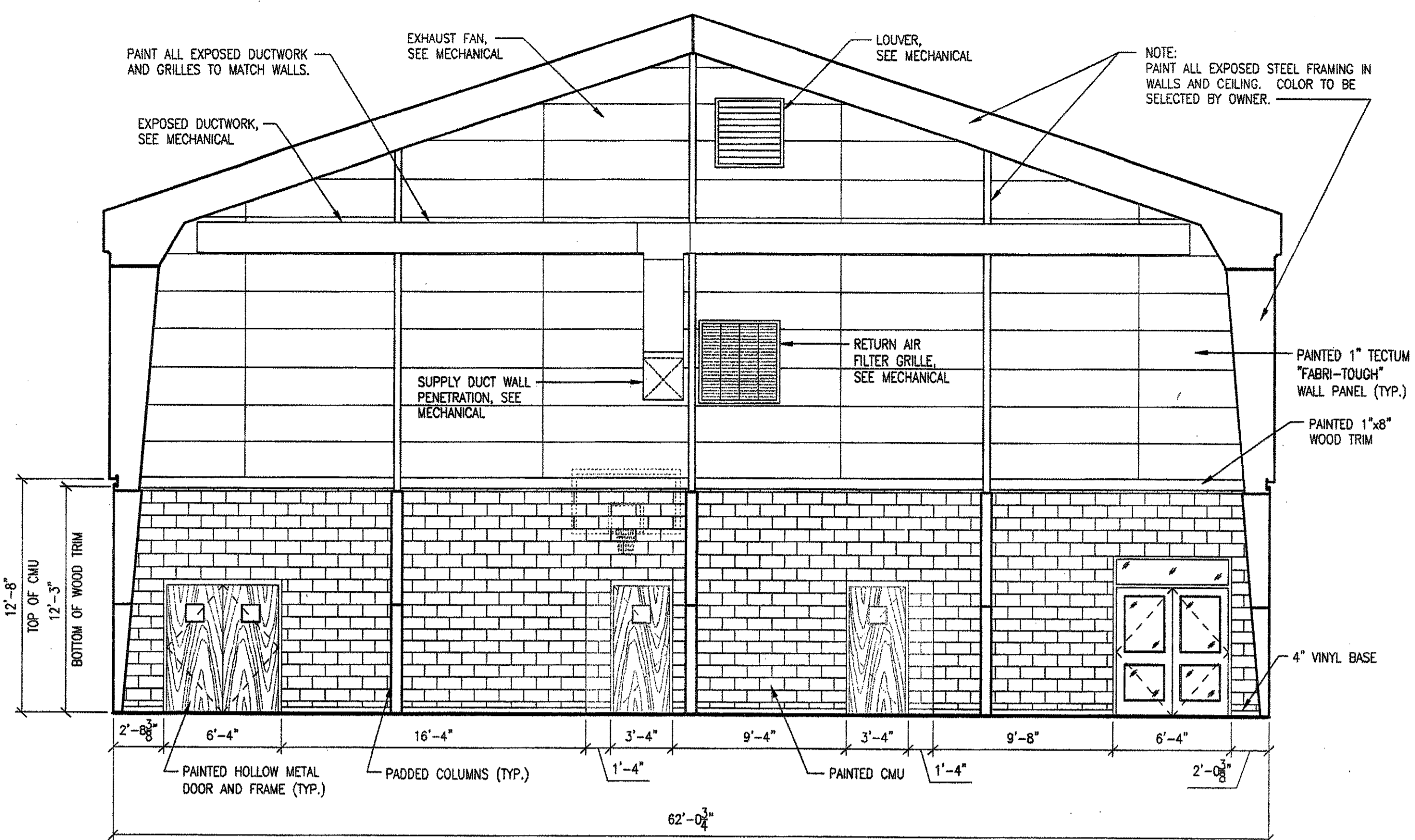
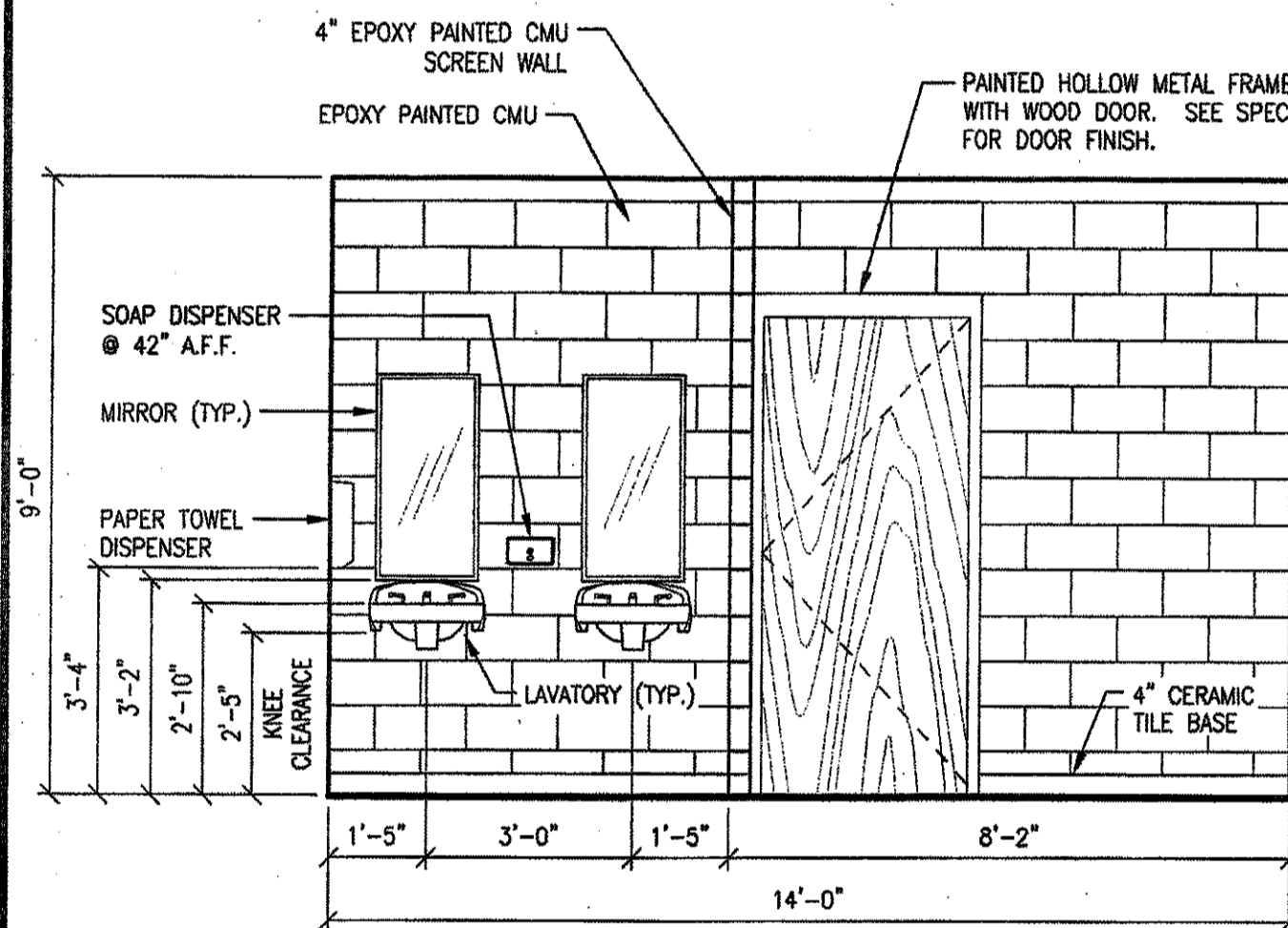


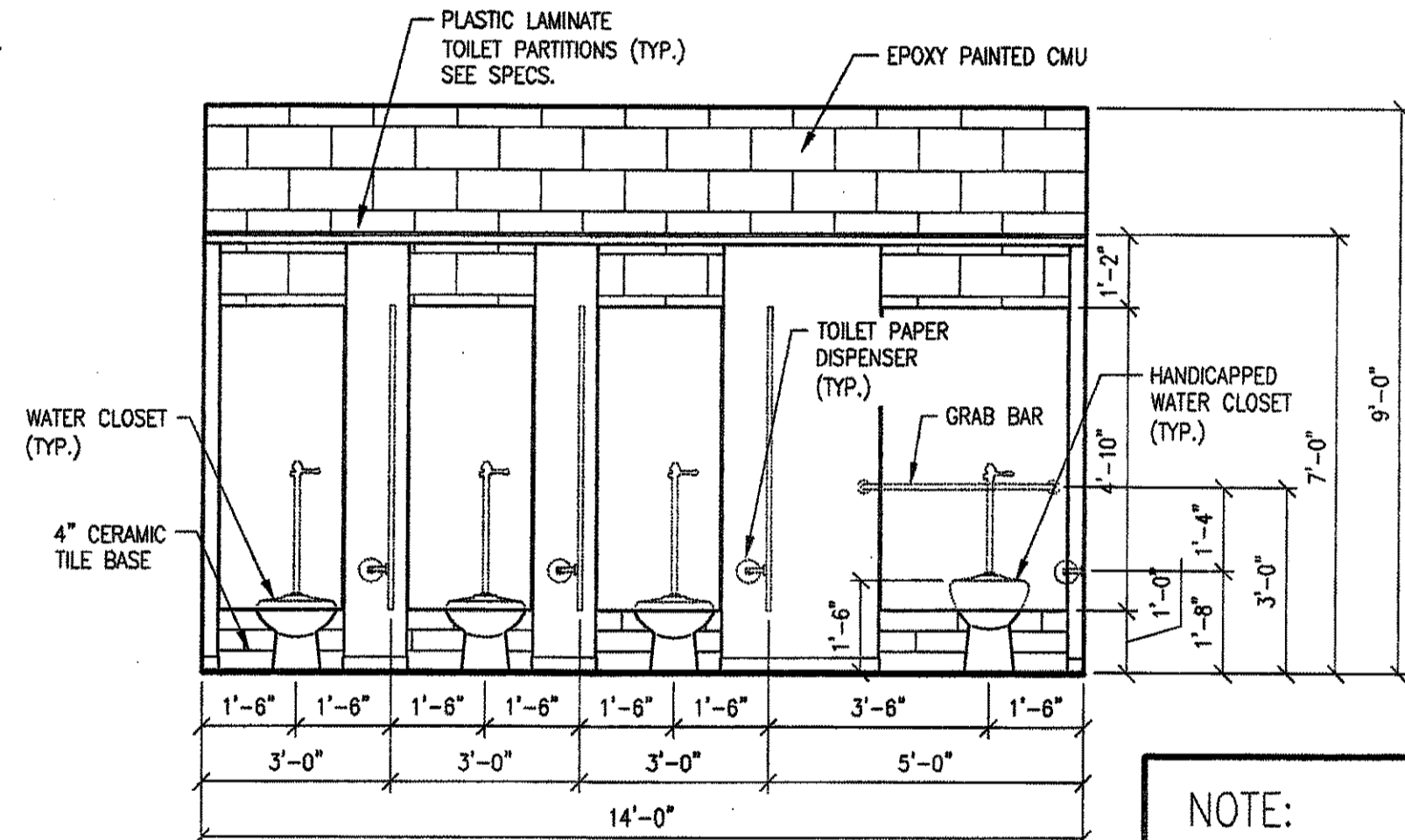
1 GYMNASIUM  
A-4.0 SCALE: 3/16" = 1'-0"



2 GYMNASIUM  
A-4.0 SCALE: 3/16" = 1'-0"

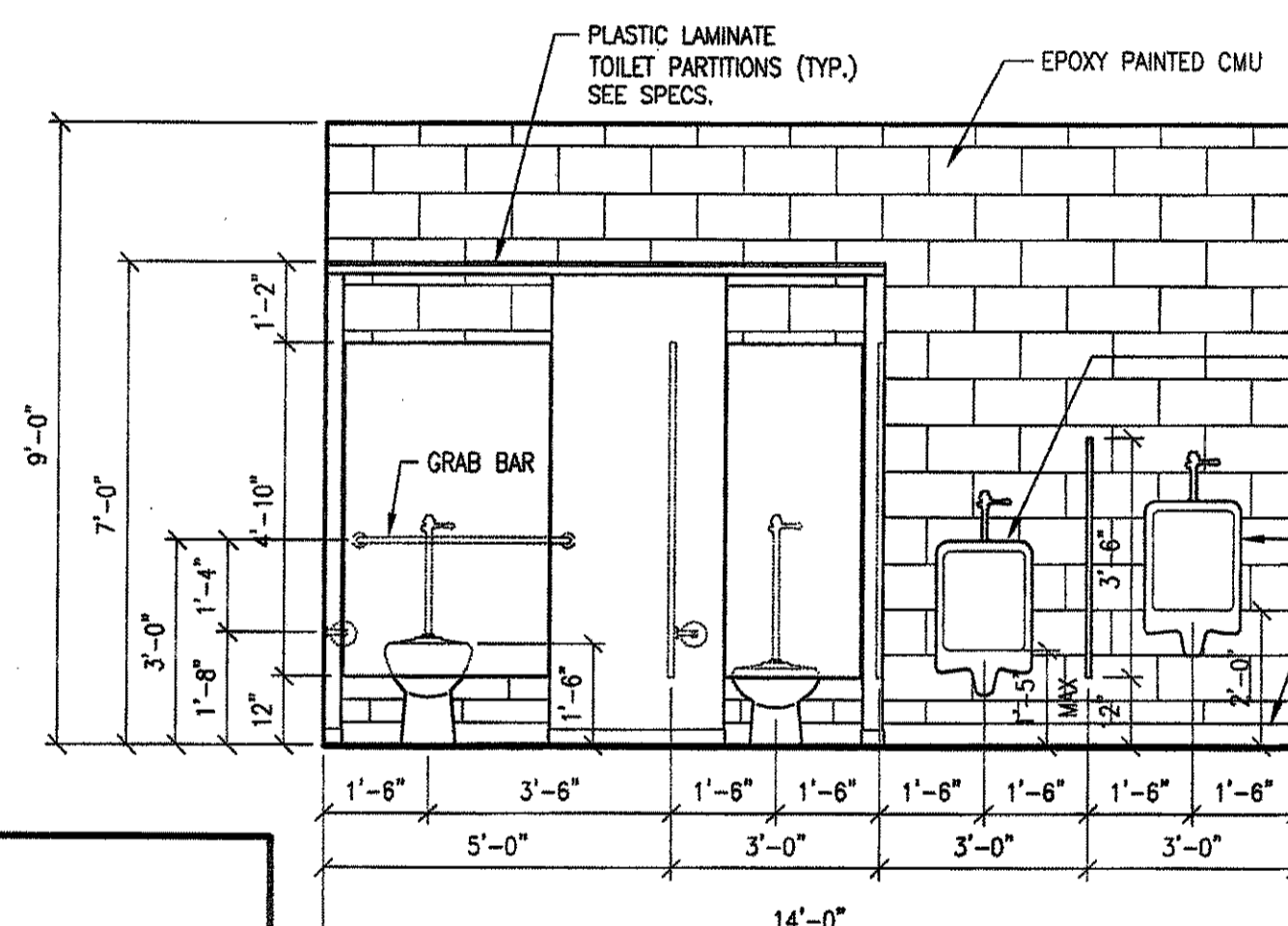


3 GIRL'S RESTROOM  
A-4.0 SCALE: 3/8" = 1'-0"

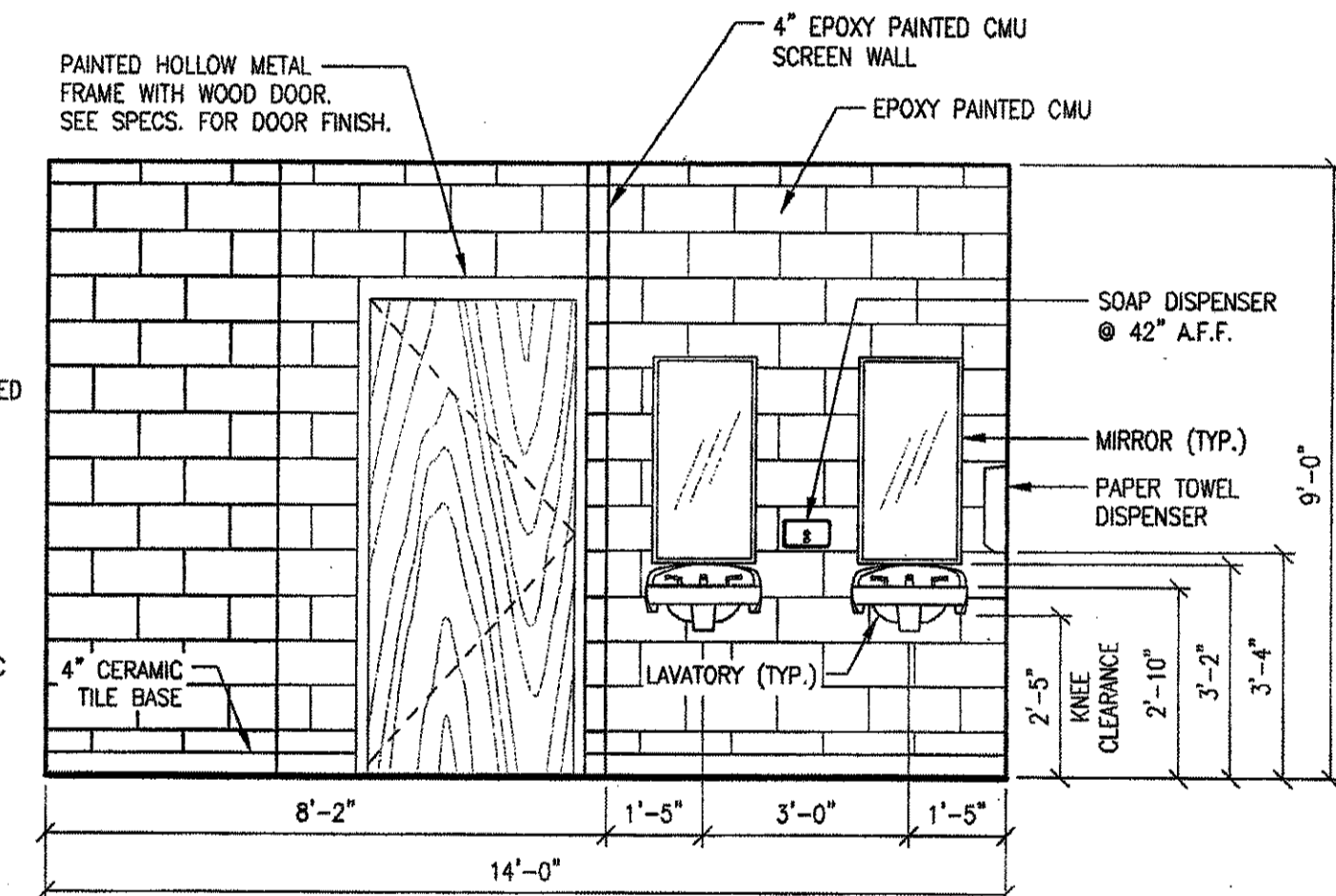


4 GIRL'S RESTROOM  
A-4.0 SCALE: 3/8" = 1'-0"

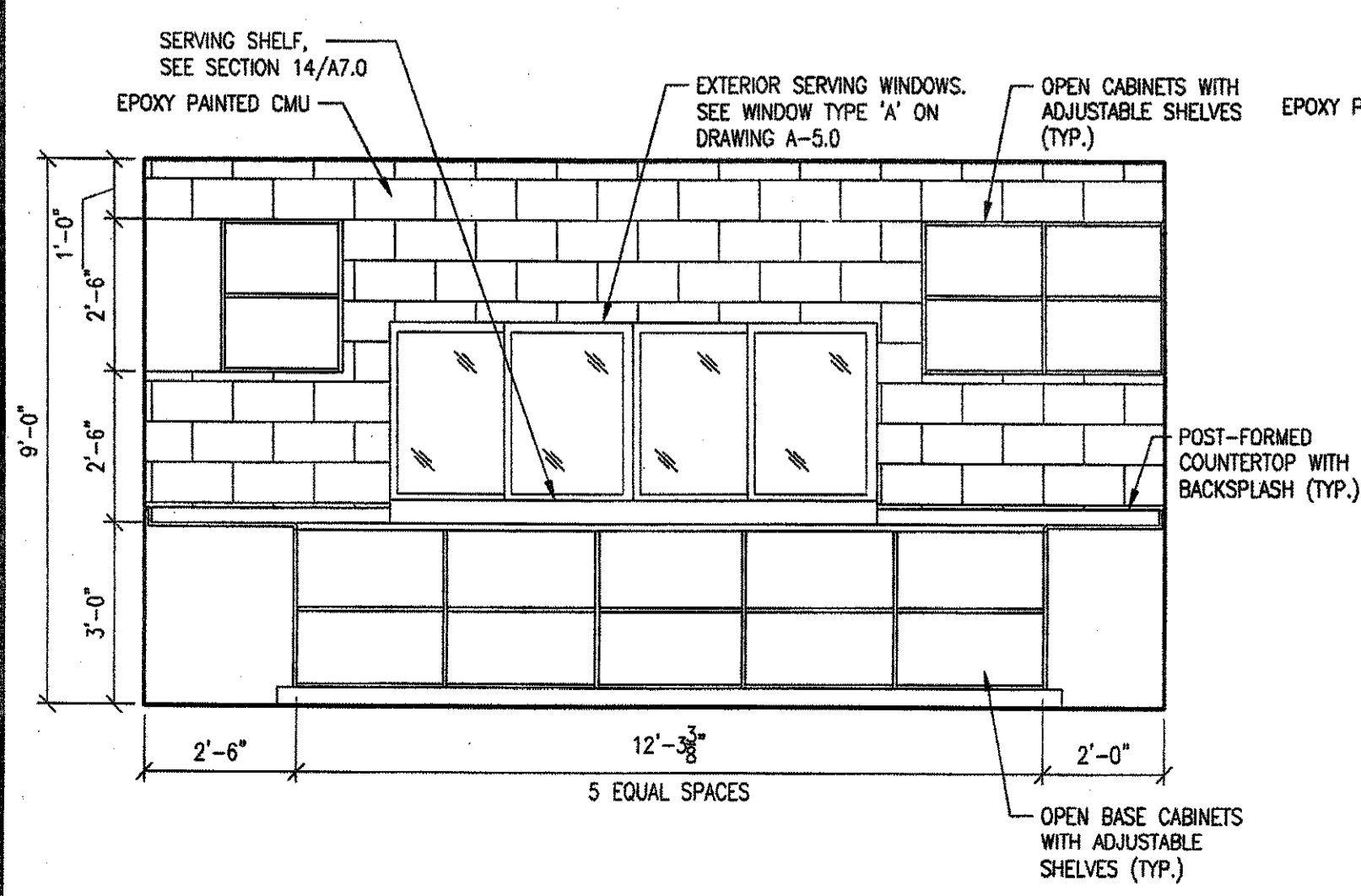
NOTE:  
SEE SPECS. FOR TOILET  
ROOM ACCESSORIES



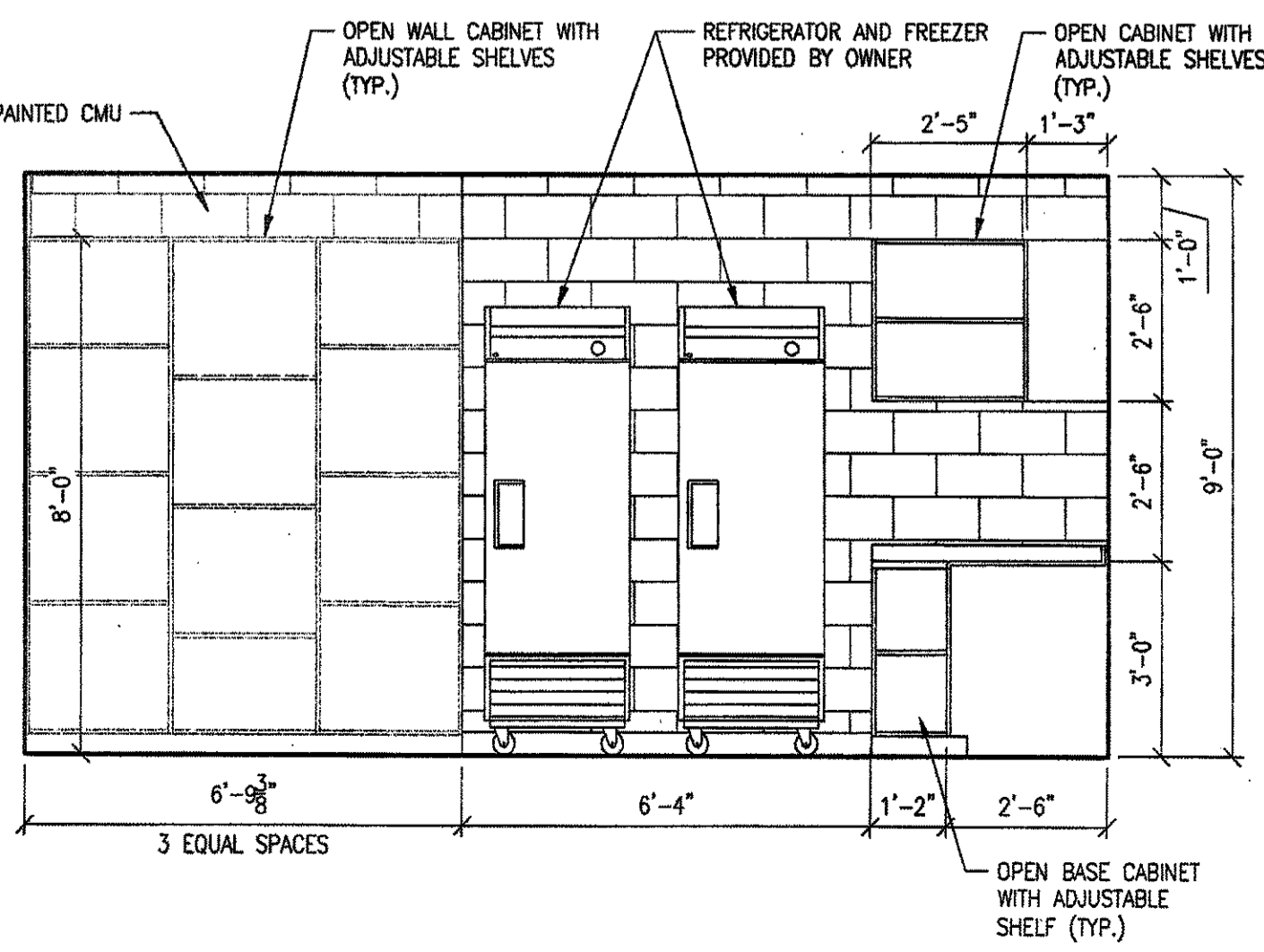
5 BOY'S RESTROOM  
A-4.0 SCALE: 3/8" = 1'-0"



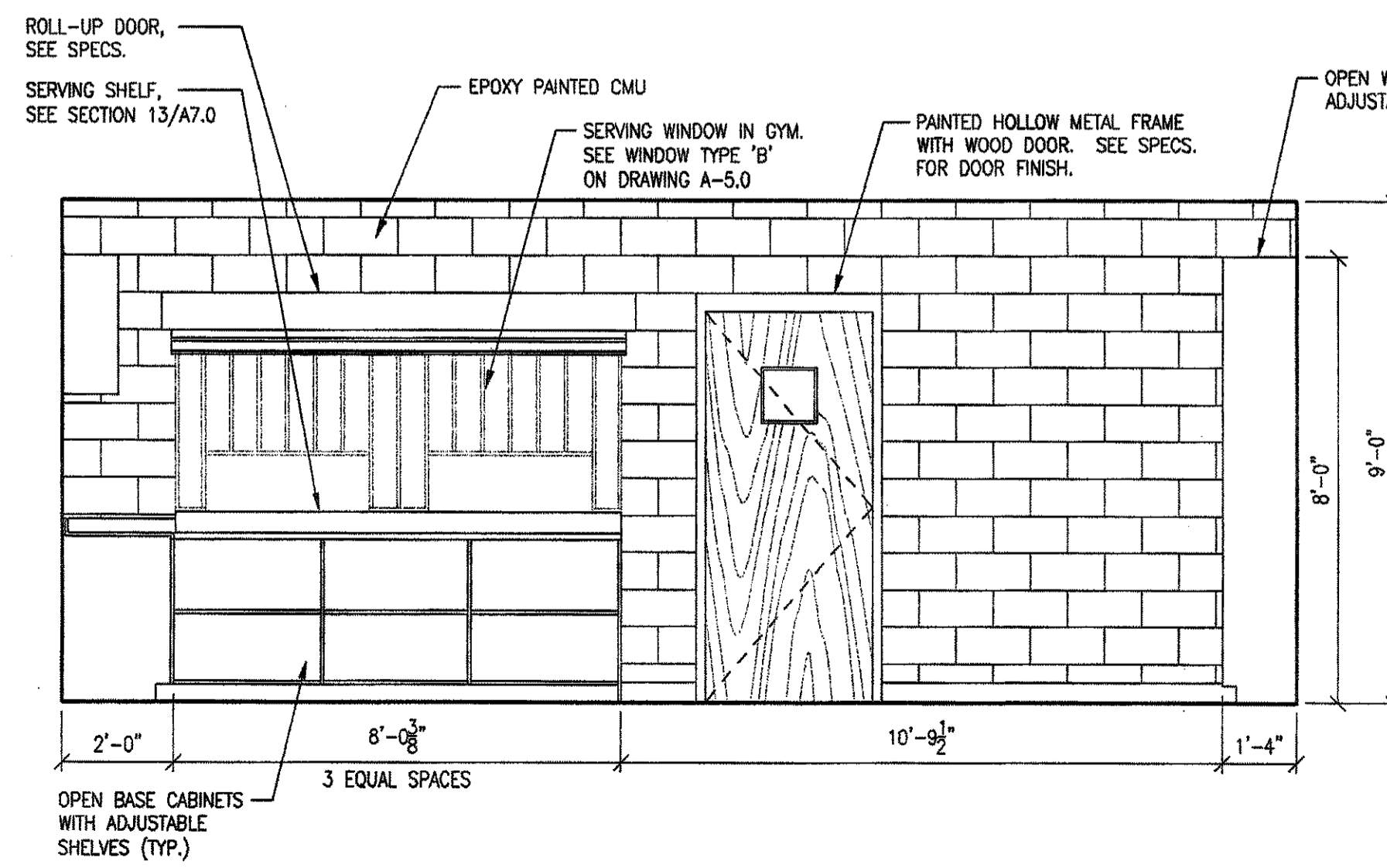
6 BOY'S RESTROOM  
A-4.0 SCALE: 3/8" = 1'-0"



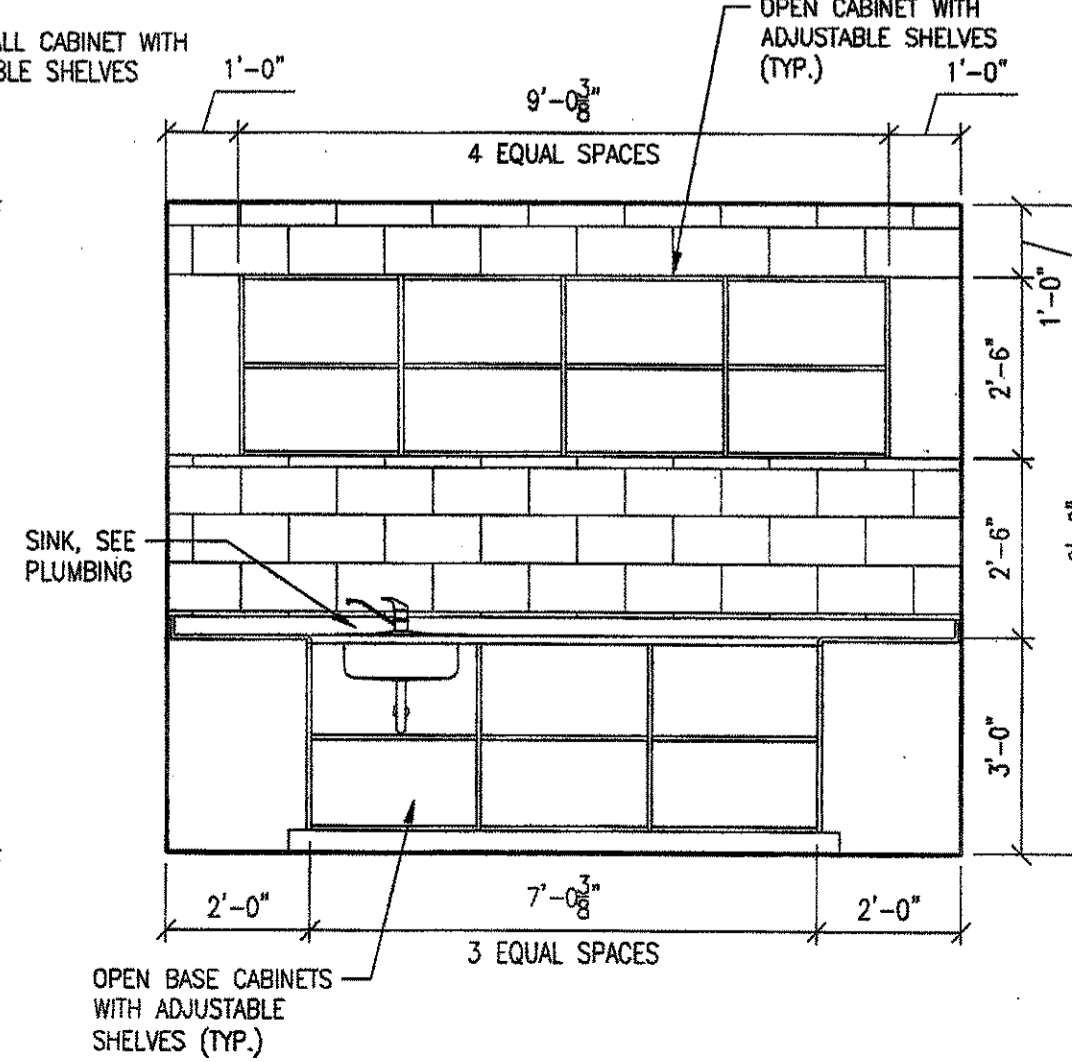
7 CONCESSION ELEVATION  
A-4.0 SCALE: 3/8" = 1'-0"



8 CONCESSION ELEVATION  
A-4.0 SCALE: 3/8" = 1'-0"



9 CONCESSION ELEVATION  
A-4.0 SCALE: 3/8" = 1'-0"



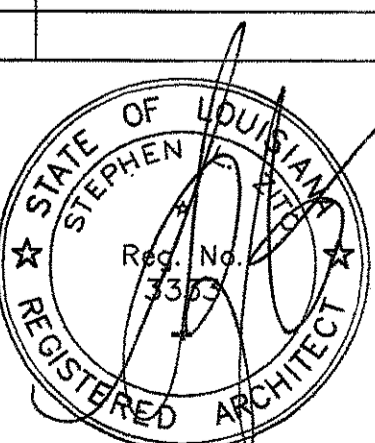
10 CONCESSION ELEVATION  
A-4.0 SCALE: 3/8" = 1'-0"

MULTI-PURPOSE BUILDING FOR  
**NORTHLAKE CHRISTIAN SCHOOL**  
70104 WOLVERINE DRIVE  
COVINGTON, LOUISIANA 70433

**ZITO·RUSSELL**  
ARCHITECTS, P.C.  
820 S. UNIVERSITY BLVD., SUITE 20 MOBILE, AL. 36609  
PHONE (251) 343-6161 FAX (251) 343-5505

© COPYRIGHT 2010  
ZITO - RUSSELL  
ARCHITECTS, P.C.

REVISIONS



FILE 3316  
DATE 07/16/10  
SHEET

**A-4.0**

MULTI-PURPOSE BUILDING FOR  
NORTHLAKE CHRISTIAN SCHOOL  
70104 WOLVERINE DRIVE  
COVINGTON, LOUISIANA 70433  
FILE: 3316-A4.0

SCALE: AS NOTED  
DRAWN: MLP