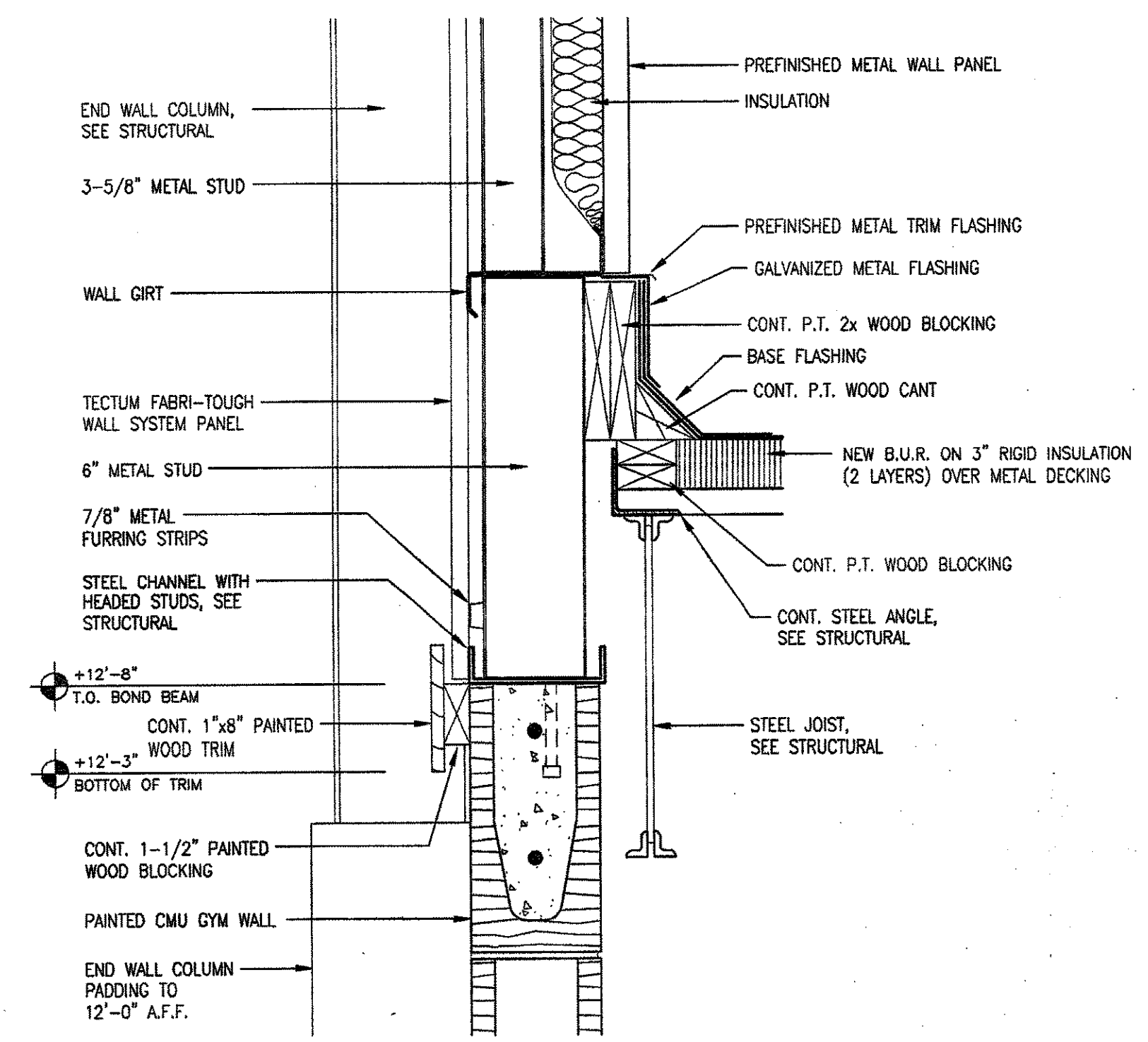
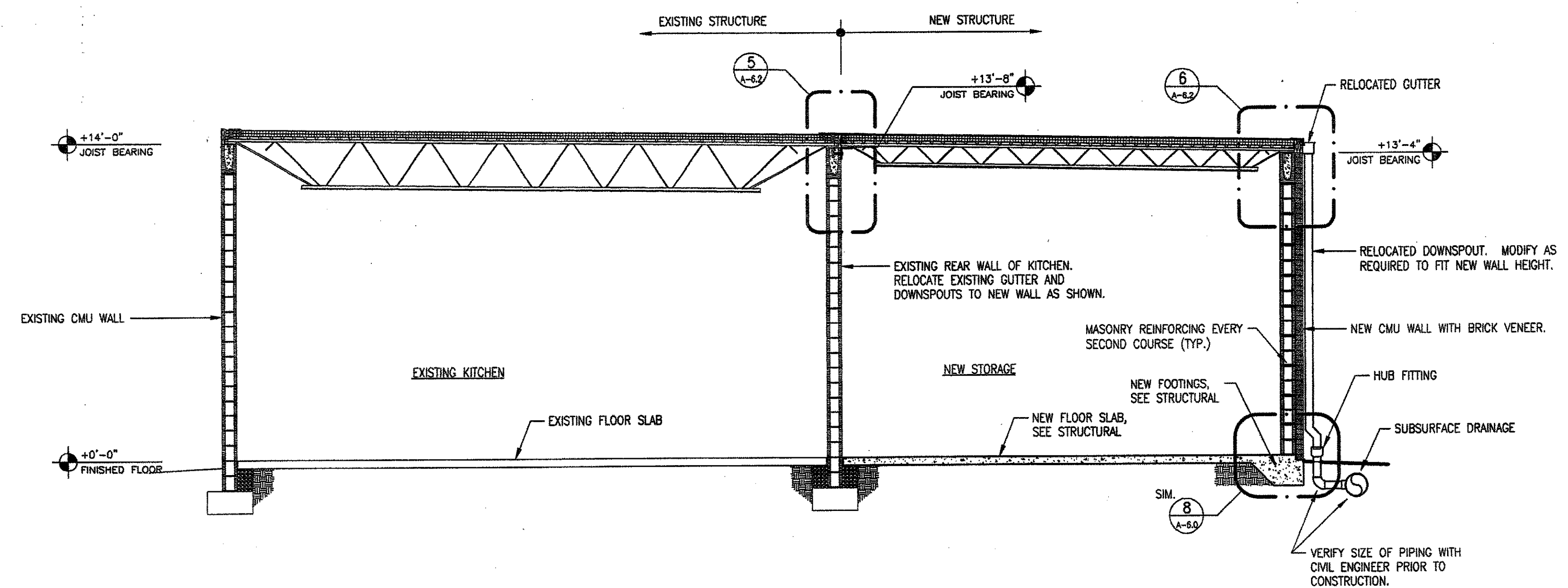


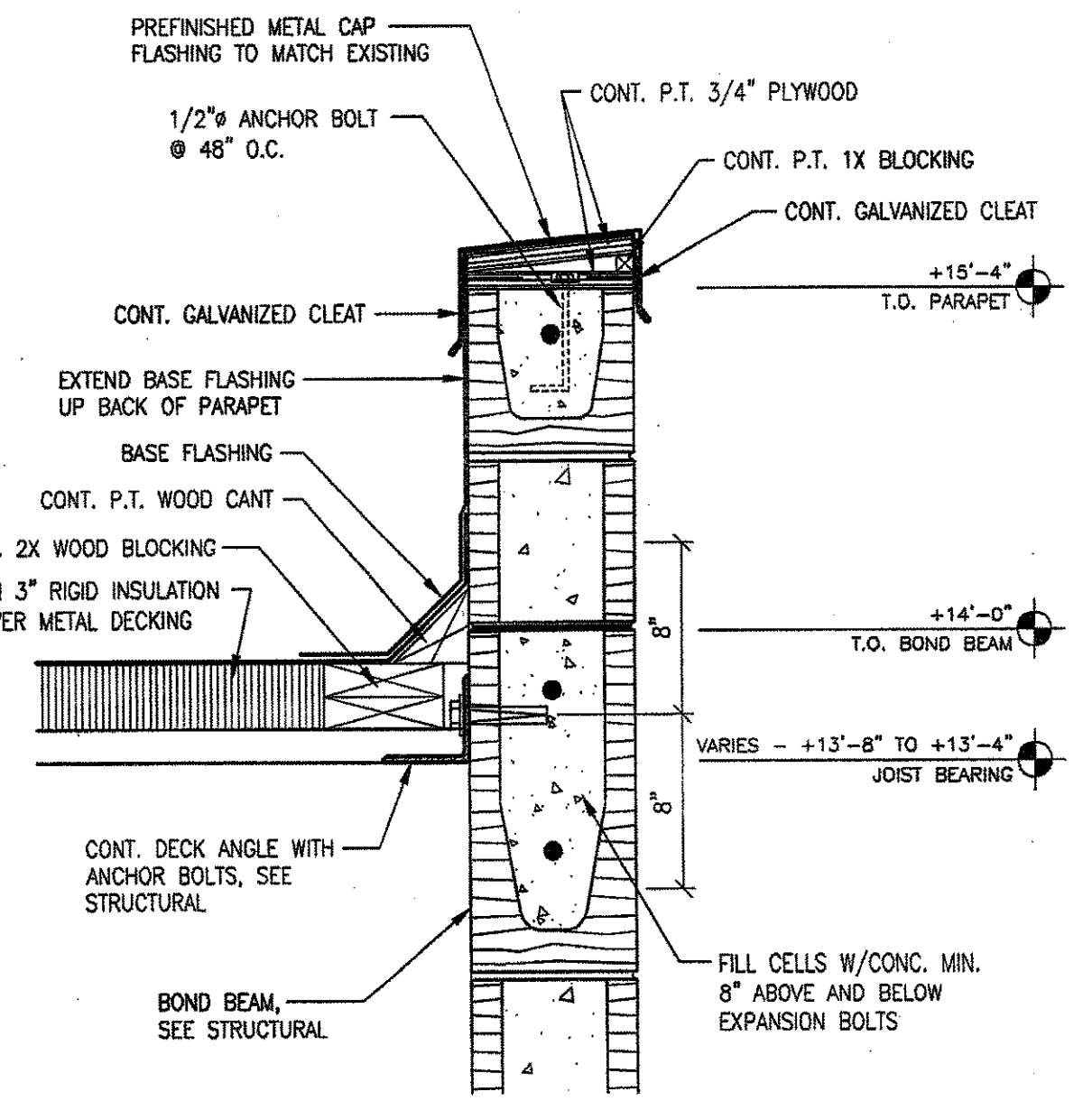
1 NEW STORAGE SECTION
A-6.2 SCALE: 1/4" = 1'-0"



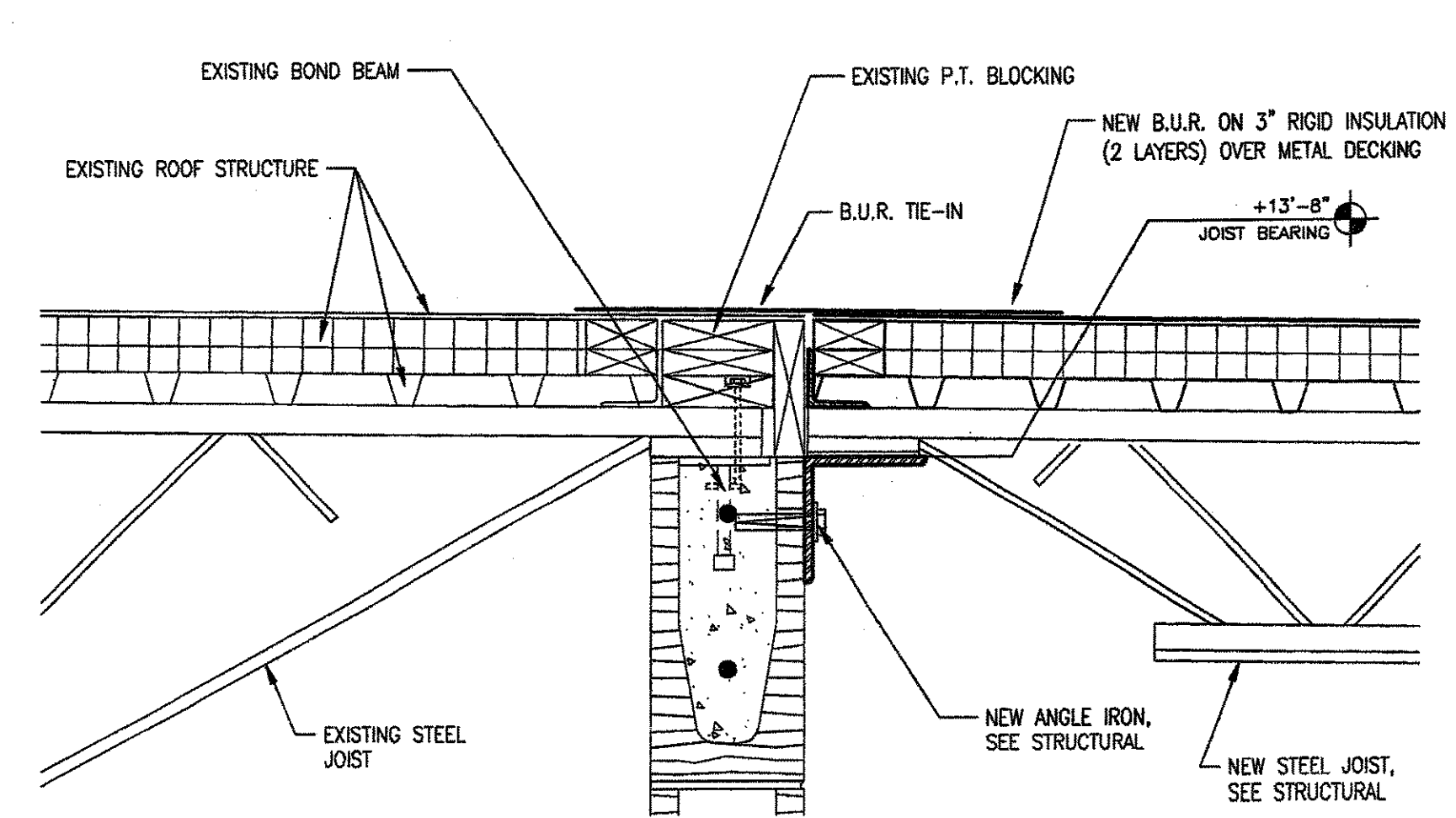
3 WALL DETAIL
A-6.2 SCALE: 1 1/2" = 1'-0"



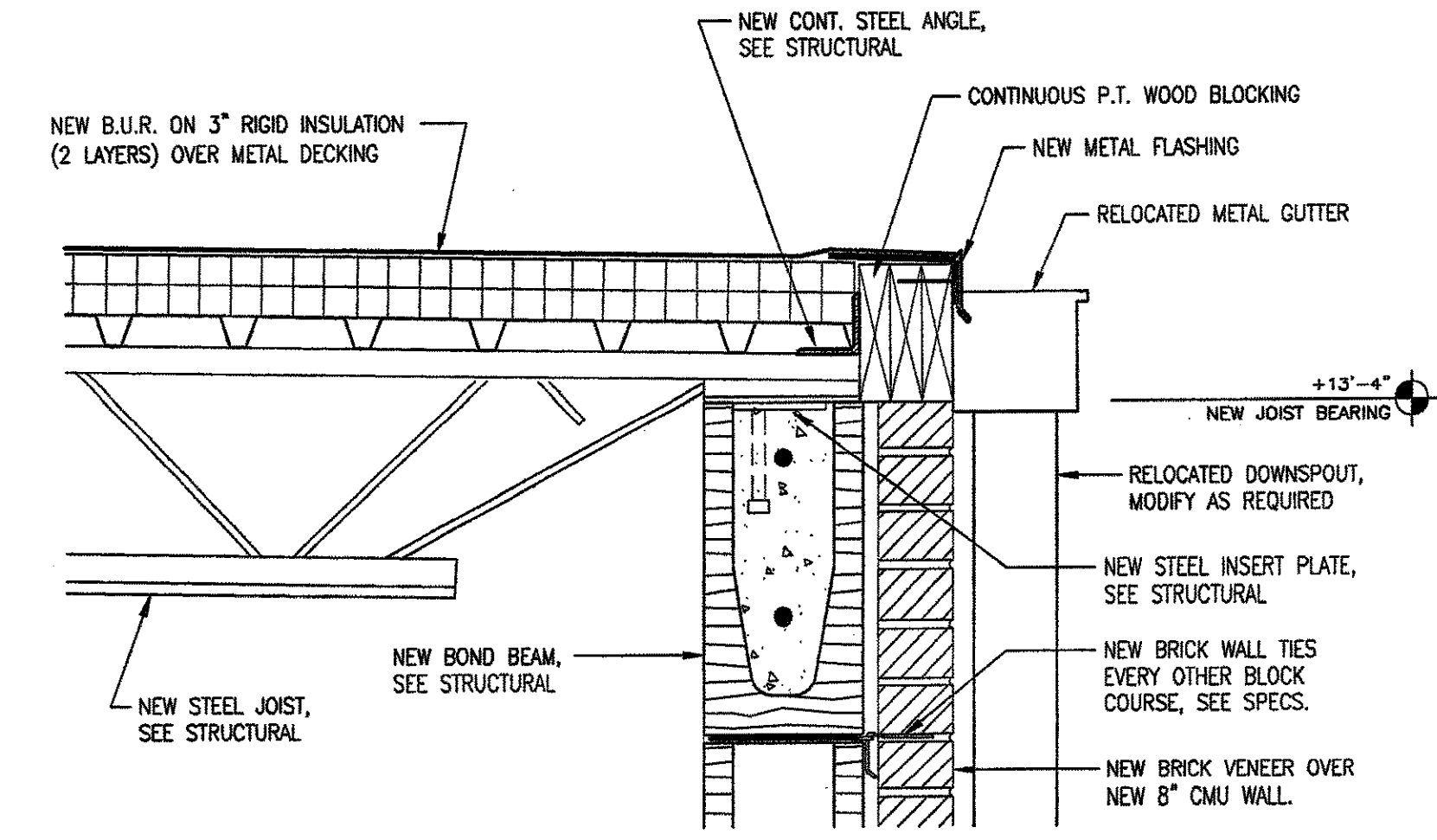
2 EXISTING KITCHEN AND NEW STORAGE SECTION
A-6.2 SCALE: 1/4" = 1'-0"



4 WALL DETAIL
A-6.2 SCALE: 1 1/2" = 1'-0"



5 WALL DETAIL
A-6.2 SCALE: 1 1/2" = 1'-0"



6 WALL DETAIL
A-6.2 SCALE: 1 1/2" = 1'-0"

MULTI-PURPOSE BUILDING FOR
NORTHLAKE CHRISTIAN SCHOOL
70104 WOLVERINE DRIVE
COVINGTON, LOUISIANA 70433

ZITO·RUSSELL
ARCHITECTS, P.C.
820 S. UNIVERSITY BLVD., SUITE 20
MOBILE, AL. 36609
PHONE (251) 343-6161
FAX (251) 343-5505

© COPYRIGHT 2010
ZITO · RUSSELL
ARCHITECTS, P.C.

REVISIONS

FILE 3316
DATE 07/16/10
SHEET

A-6.2

MULTI-PURPOSE BUILDING FOR
NORTHLAKE CHRISTIAN SCHOOL
70104 WOLVERINE DRIVE
COVINGTON, LOUISIANA 70433
FILE: 3316-AG.2

DRAWN: MLP

SCALE: AS NOTED