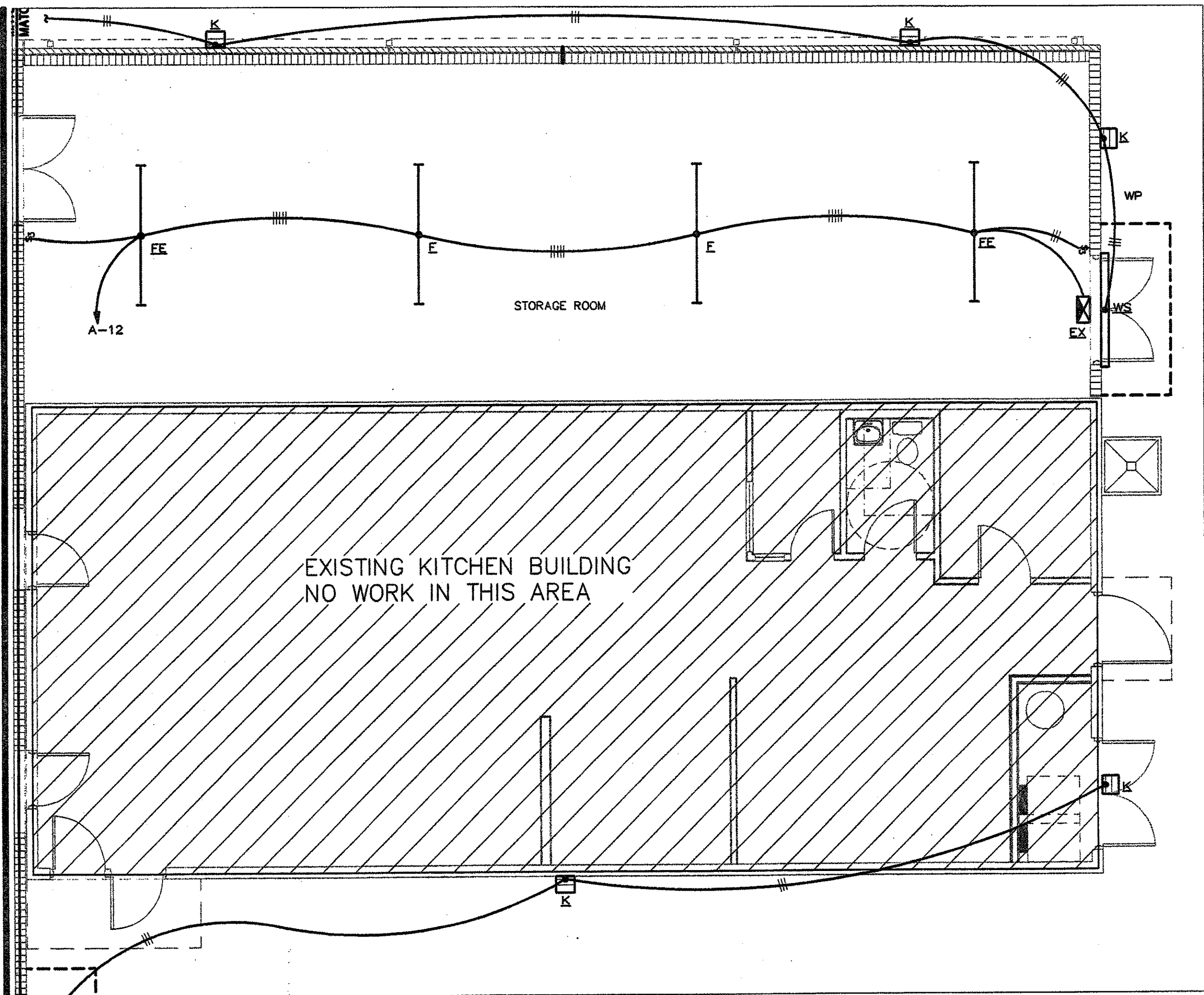
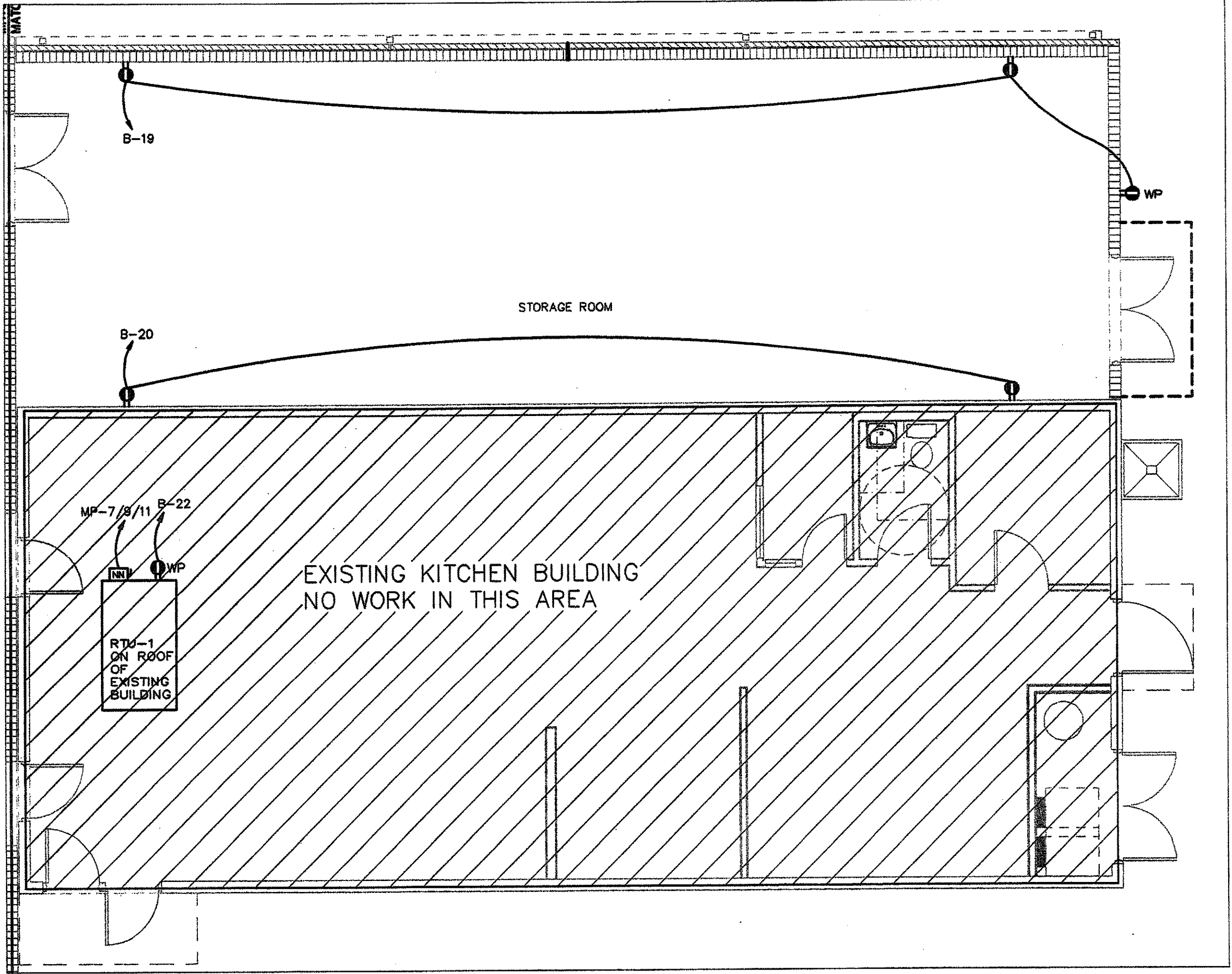


MULTI-PURPOSE BUILDING FOR
NORTHLAKE CHRISTIAN SCHOOL
70104 WOLVERINE DRIVE
COVINGTON, LOUISIANA 70433
FILE:



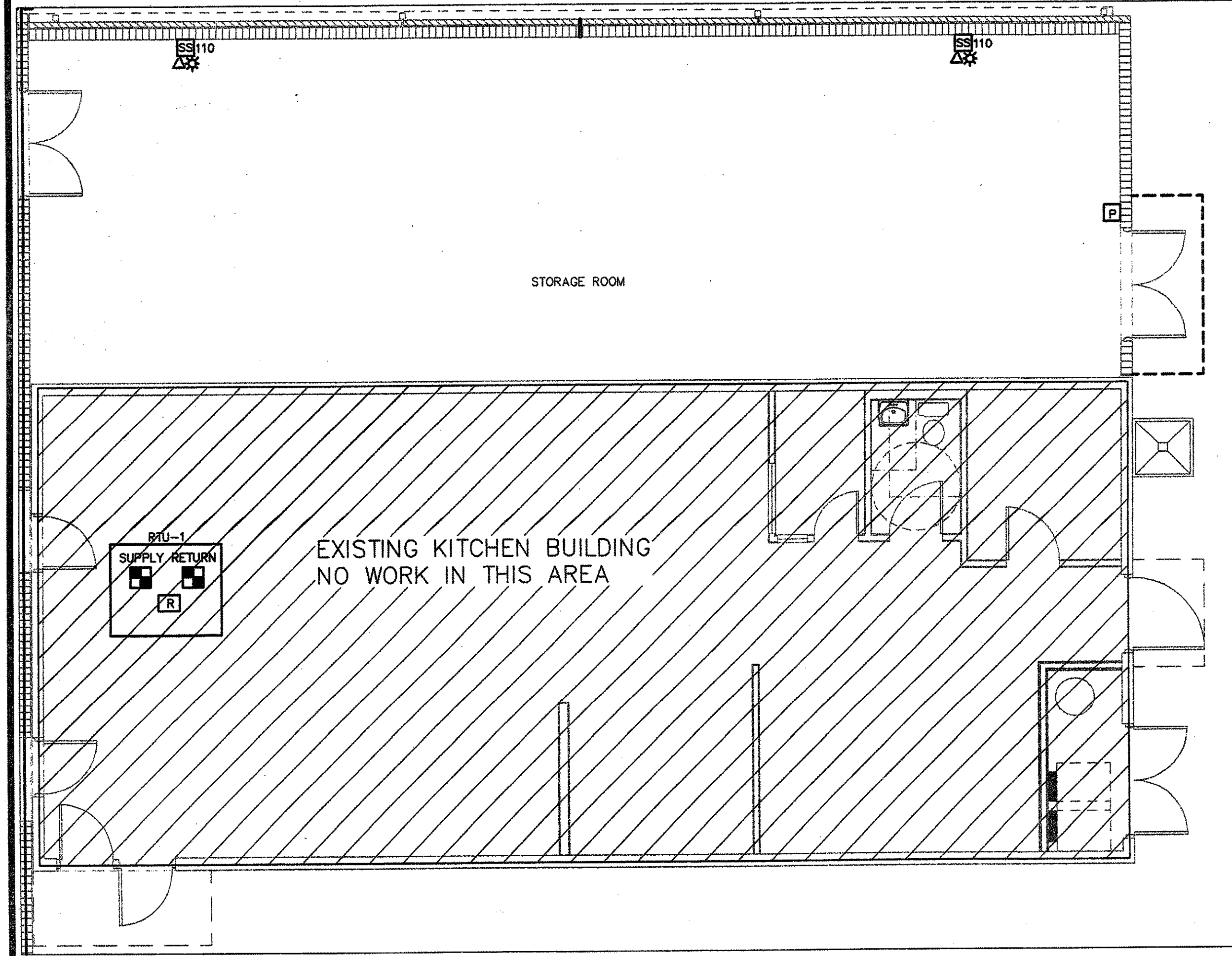
1 STORAGE ROOM LIGHTING PLAN

SCALE: 3/16" = 1'-0"



2 STORAGE ROOM POWER PLAN

SCALE: 3/16" = 1'-0"



3 STORAGE ROOM FIRE ALARM PLAN

SCALE: 3/16" = 1'-0"

DRAWN:

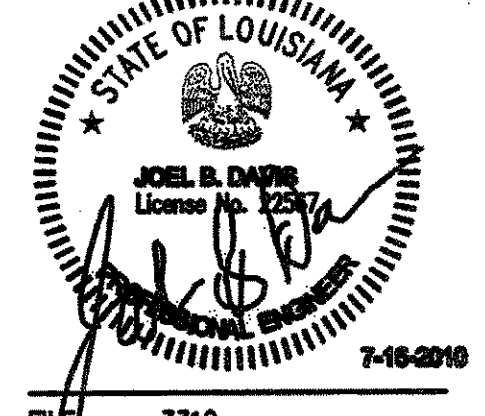
SCALE:

MULTI-PURPOSE BUILDING FOR
NORTHLAKE CHRISTIAN SCHOOL
70104 WOLVERINE DRIVE
COVINGTON, LOUISIANA 70433

ZITO·RUSSELL
ARCHITECTS, P.C.
820 S. UNIVERSITY BLVD., SUITE 20 MOBILE, AL. 36608
PHONE (251) 343-6161 FAX (251) 343-5505

© COPYRIGHT 2010
ZITO - RUSSELL
ARCHITECTS, P.C.

REVISIONS



FILE: 3316
DATE: 07/16/10
SHEET

E6