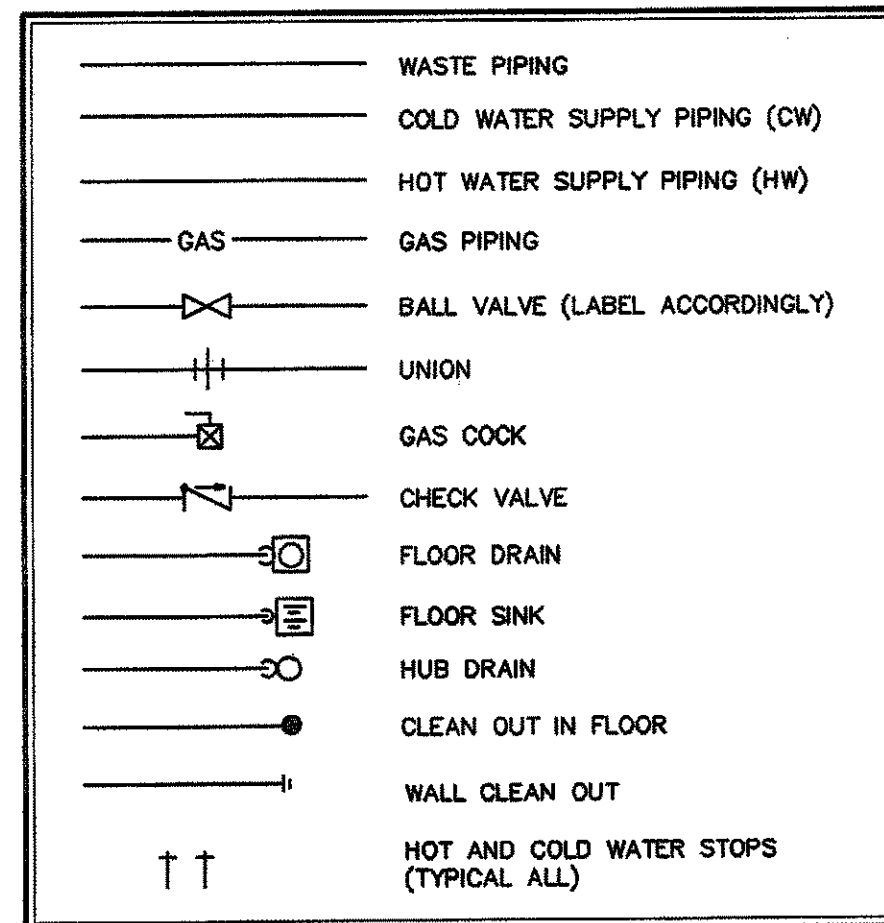


MARK	FITTURE	CONN.			MANUFAC. & MODEL	DESCRIPTION
		W	CW	HW		
P-1	WATER CLOSET	4"	1"	-	Am. Std. 2234.015	FLOOR MOUNTED BOTTOM OUTLET, 1.6 GAL. FLUSH W/ SLOAN ROYAL 111-YK FLUSH VALVE, OPEN FRONT SEAT.
P-2	WATER CLOSET (HANDICAP)	4"	1"	-	Am. Std. 3043.102	FLOOR MOUNTED BOTTOM OUTLET, 1.6 GAL. FLUSH W/ SLOAN ROYAL 111-YK FLUSH VALVE, OPEN FRONT SEAT.
P-3	URINAL	2"	3/4"	-	Am. Std. 6801.012	WALL HUNG BLOWOUT 1 GAL. FLUSH WITH SLOAN ROYAL 180-YB FLUSH VALVE, JR. SMITH 363 CARRIER INSTALL @ 24" FROM FINISH FLOOR TO TOP OF RIM. (REGULAR)
P-4	URINAL (HANDICAP)	2"	3/4"	-	Am. Std. 6801.012	WALL HUNG BLOWOUT 1 GAL. FLUSH WITH SLOAN ROYAL 180-YB FLUSH VALVE, JR. SMITH 363 CARRIER INSTALL @ 14" FROM FINISH FLOOR TO TOP OF RIM. (ADA)
P-5	LAVATORY	1 1/4"	1/2"	1/2"	Am. Std. 0355.012	WALL HUNG VITREOUS CHINA, 4" o.c. FAUCET HOLES, SYMMONS S-20-2-G SINGLE HANDLE FAUCET, TRAP AND STRAINER, J.R. SMITH 0700 CONCEALED ARM CARRIER. SEE ARCHITECTURAL INTERIOR ELEVATIONS FOR EXACT ADA COMPLIANT LOCATIONS AND MOUNTING HEIGHTS. INSULATE WATER SUPPLY AND WASTE PIPING UNDER HANDICAPPED LAVATORIES WITH "HANDI-LAV GUARD" JACKET BY TRUEBRO (203) 875-2868.
P-6	MOP SINK	3"	1/2"	1/2"	Flat MSB-2424	FLOOR MOUNTED MOLDED STONE BASIN WITH FIAT 830-AA FAUCET, 832-AA HOSE, 889-CC MOP BRACKET, 1453-BB ALTERNATE STRAINER.
P-7	EXTERIOR HOSE BIBB	-	3/4"	-	Zurn Z-1320	ECOLOTRON WALL HYDRANT WITH CERAMIC DISC, ENCASED, NON-FREEZE, ANTI-SIPHON, AUTO DRAIN, S.S. BOX & HINGED COVER W/ OPERATING KEY LOCK AND "WATER" STAMPED ON COVER. ALL BRONZE INTERIOR PARTS.
P-8	MIXING HYDRANT	-	3/4"	3/4"	Zurn Z-1327-EZ	"VARI-TEMP" COMBINATION HOT & COLD WATER MIXING, ENCASED WALL HYDRANT FOR FLUSH INSTALLATION. ALL BRONZE CASING, INTERIOR PARTS, NICKEL BRONZE BOX & HINGED COVER WITH OPERATING KEY LOCK AND "WATER" CAST ON COVER.
P-9	INTERIOR HOSE BIBB	-	3/4"	-	Zurn Z-1333	ECOLOTRON WALL HYDRANT WITH CERAMIC DISC, COMPLETE WITH INTEGRAL BACKFLOW PREVENTER, ALL BRONZE INTERIOR PARTS W/ 1/2 TURN CERAMIC DISC CARTRIDGE, S.S. FACE & OPERATING KEY.
P-10	S.S. SINK	1 1/2"	1/2"	1/2"	Elkay LR-2219	18 GA 1 COMP. SS SELF RIMMING COUNTERTOP SINK. SYMMONS S-23 FAUCET, LK-99 STRAINER, TRAP SEE ARCHITECTURAL ELEVATIONS FOR MORE INFORMATION.
P-11	ICE MAKER BOX	-	1/2"	-	Oatey 38608	ICE MAKER BOX WITH WATER HAMMER ARRESTOR INSTALLED, WITH 1/4 TURN MIP VALVE.
WH-1	WATER HEATER	3/4"	3/4"	3/4"	A.O. Smith DEL-20	208v, 3p, 4 kw 20 GALLON ELECTRIC WATER HEATER. PROVIDE WITH DRAIN PAN, ROUTE T&P & PAN AS NOTED ON DRAWINGS. SEE DETAIL FOR MOUNTING INFORMATION.



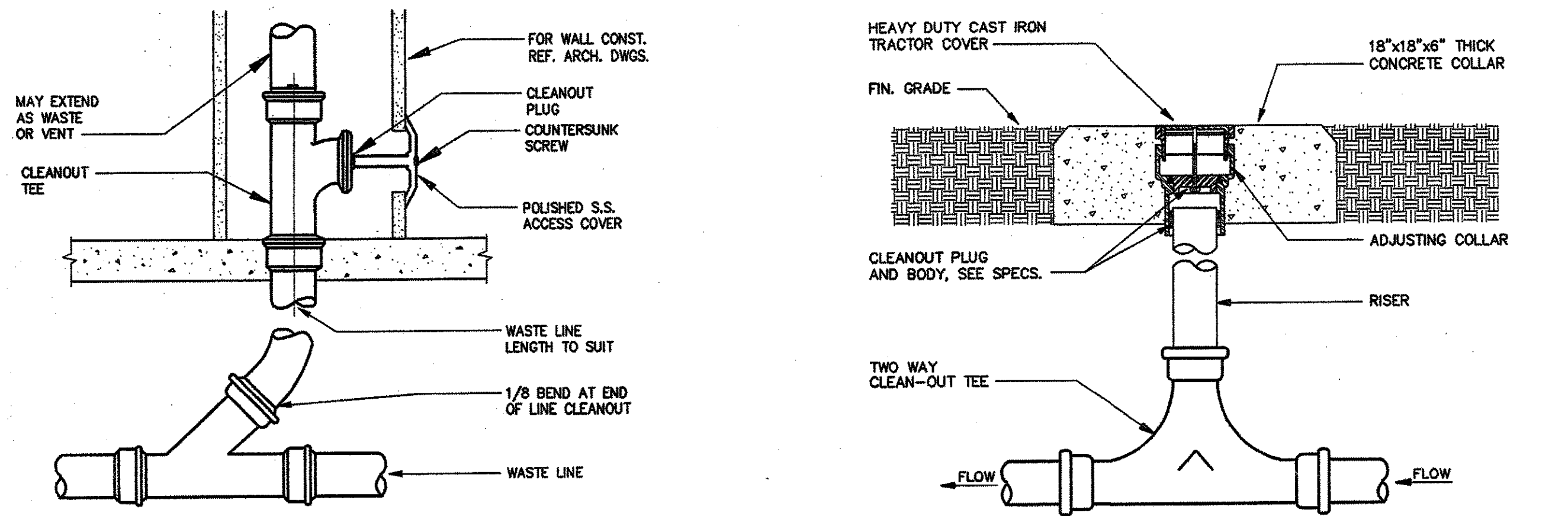
1 PLUMBING LEGEND

P1 NOT TO SCALE

- IT IS THE RESPONSIBILITY OF THIS CONTRACTOR TO FIELD VERIFY ALL SITE CONDITIONS PRIOR TO STARTING ANY PHASE OF CONSTRUCTION. ANY CHANGES OR COST NOT SHOWN ON THESE DRAWINGS SHALL BE BROUGHT TO THE ATTENTION OF THE ARCHITECT, ENGINEER PRIOR TO BID. ANY CHANGE ORDERS BROUGHT UP AFTER THE ACCEPTED BID THAT DIRECTLY RELATES TO FAILURE OF A SITE VISIT SHALL BE SOLELY THE RESPONSIBILITY OF THE PLUMBING CONTRACTOR. THE OWNER WILL NOT PAY FOR CHANGE ORDERS DUE TO THE CONTRACTOR'S FAILURE TO PERFORM A THOROUGH SITE VISIT. COORDINATE WITH ALL TRADES, FIELD VERIFY ALL EXISTING CONDITIONS.
- ALL EXISTING UTILITY LOCATIONS SHOWN ON THIS PLAN WERE TAKEN FROM EXISTING DRAWINGS (NOT AS BUILTS) AND ARE ASSUMED TO BE CORRECT. IT IS THE RESPONSIBILITY OF THIS CONTRACTOR TO PROPERLY VERIFY ALL UNDER GROUND AND ABOVE GROUND UTILITIES PRIOR TO BID AND CONSTRUCTION.
- COORDINATE DEMOLITION AND NEW CONSTRUCTION WITH ALL TRADES THROUGHOUT THE ENTIRE LENGTH OF THIS PROJECT. ANY QUESTIONS ABOUT EXISTING SITE CONDITIONS CAN BE OBTAINED FROM THE ARCHITECT.
- KEEP ALL CUTTING AND PATCHING TO A MINIMUM.
- IT IS RECOMMENDED THAT THE SUBCONTRACTOR ARRANGE A PRE-JOB CONFERENCE WITH THE CONSTRUCTION SUPERVISOR FOR REVIEW & CLARIFICATION PRIOR TO STARTING ANY WORK.

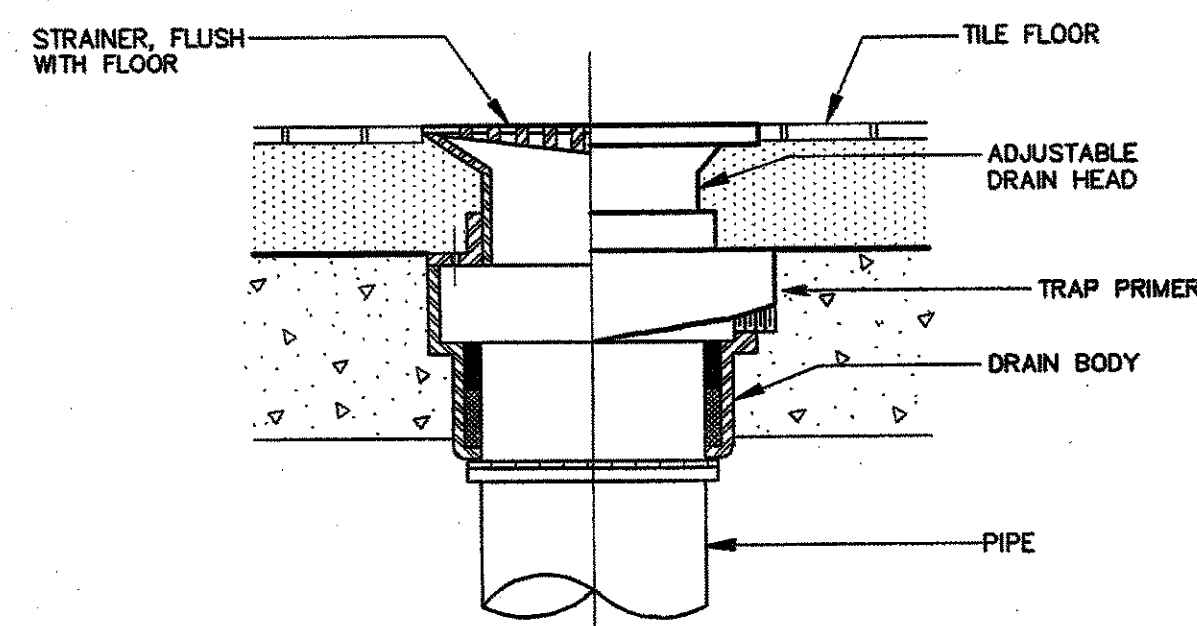
2 PLUMBING FIXTURE SCHEDULE

P1 NOT TO SCALE



5 WALL CLEANOUT DETAIL

P1 NOT TO SCALE

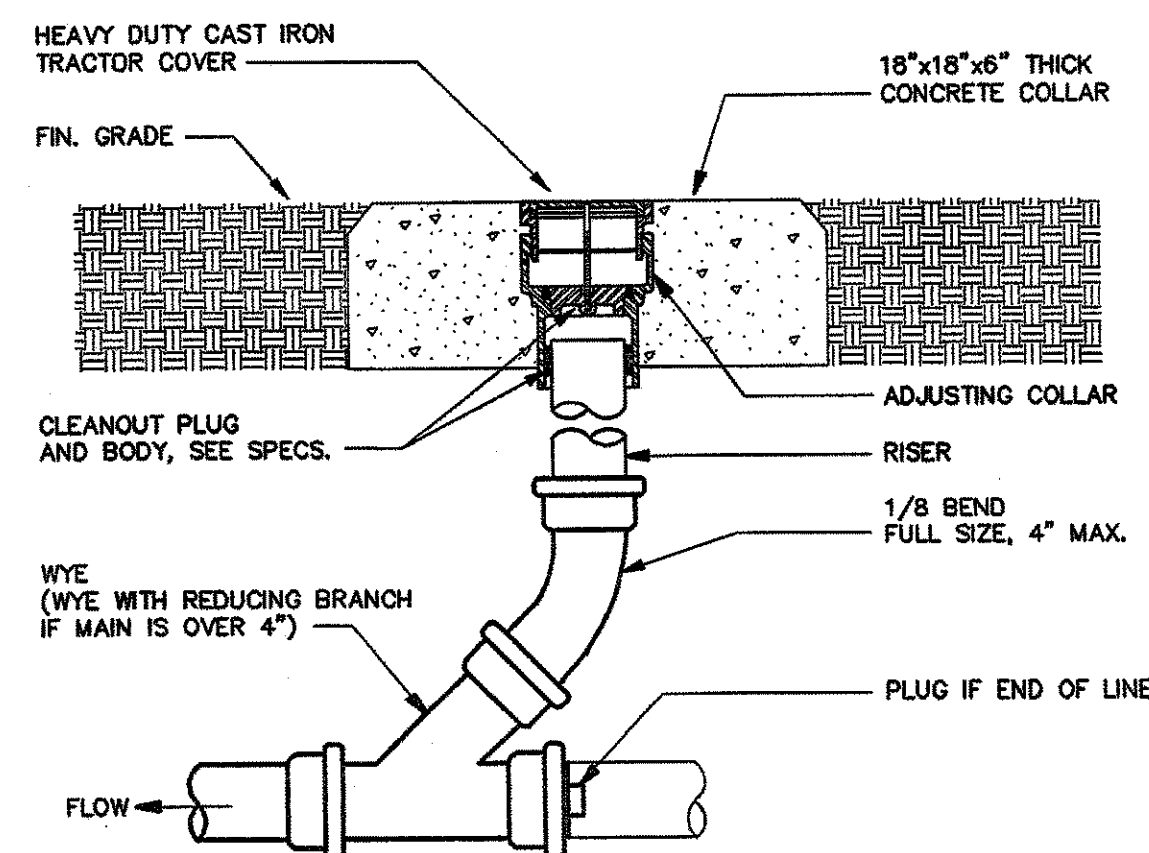


8 FLOOR DRAIN DETAIL

P1 NOT TO SCALE

6 TWO WAY GRADE CLEANOUT

P1 NOT TO SCALE

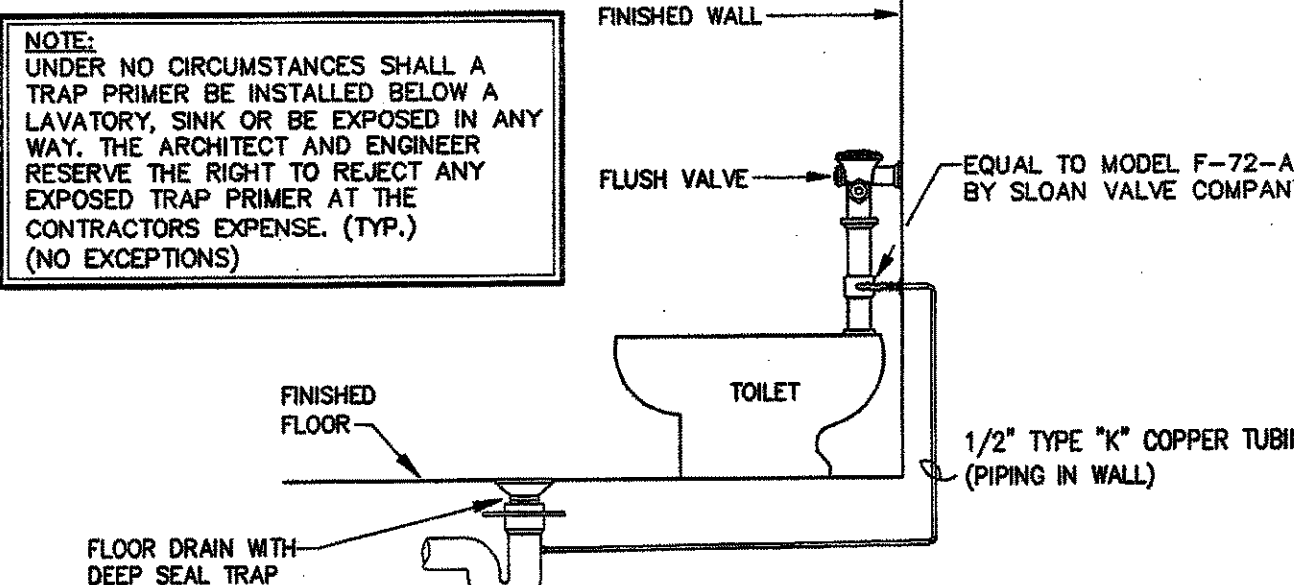


9 GRADE CLEANOUT

P1 NOT TO SCALE

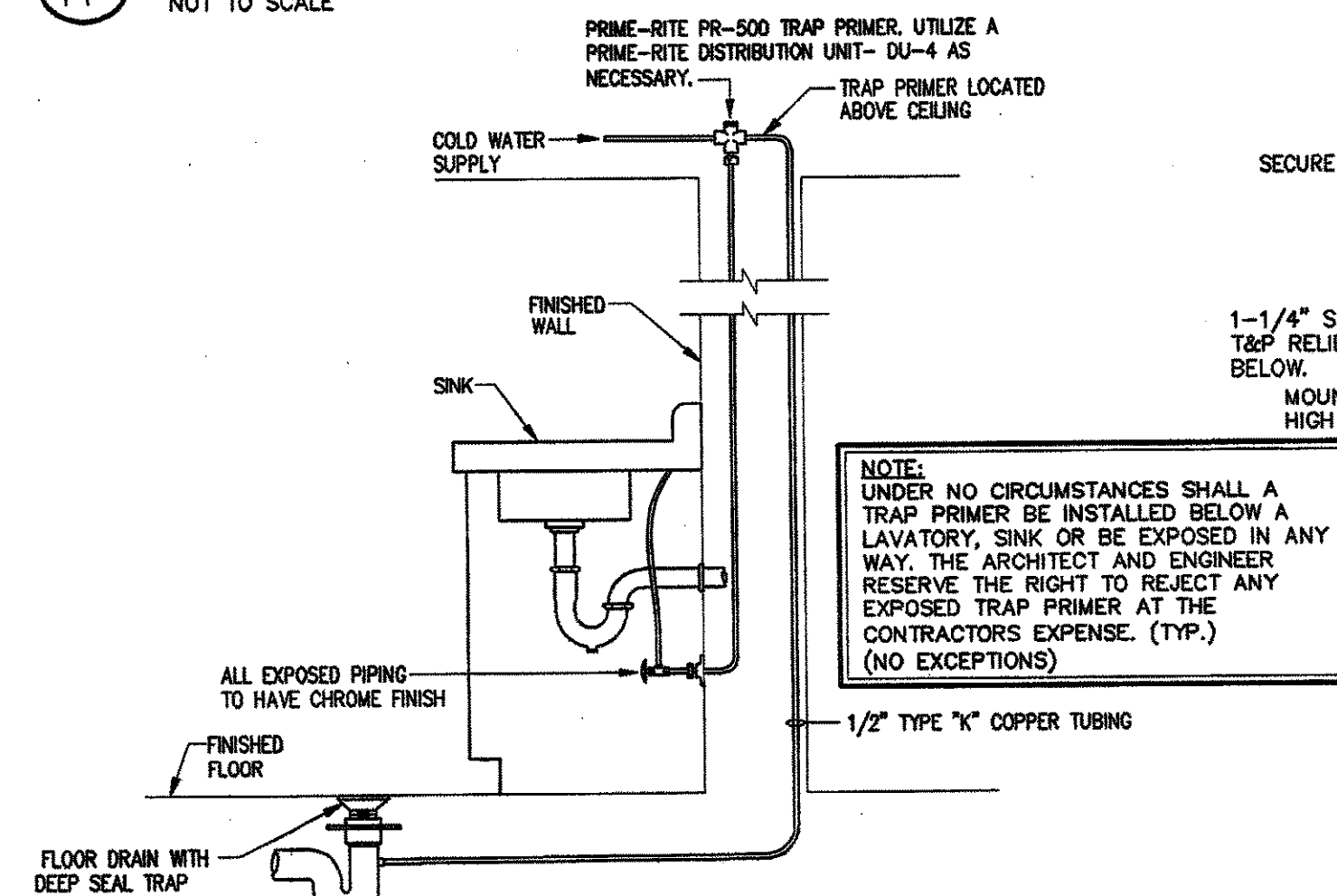
3 PLUMBING SITE NOTES

P1 NOT TO SCALE



7 RESTROOM TRAP PRIMER DETAIL

P1 NOT TO SCALE

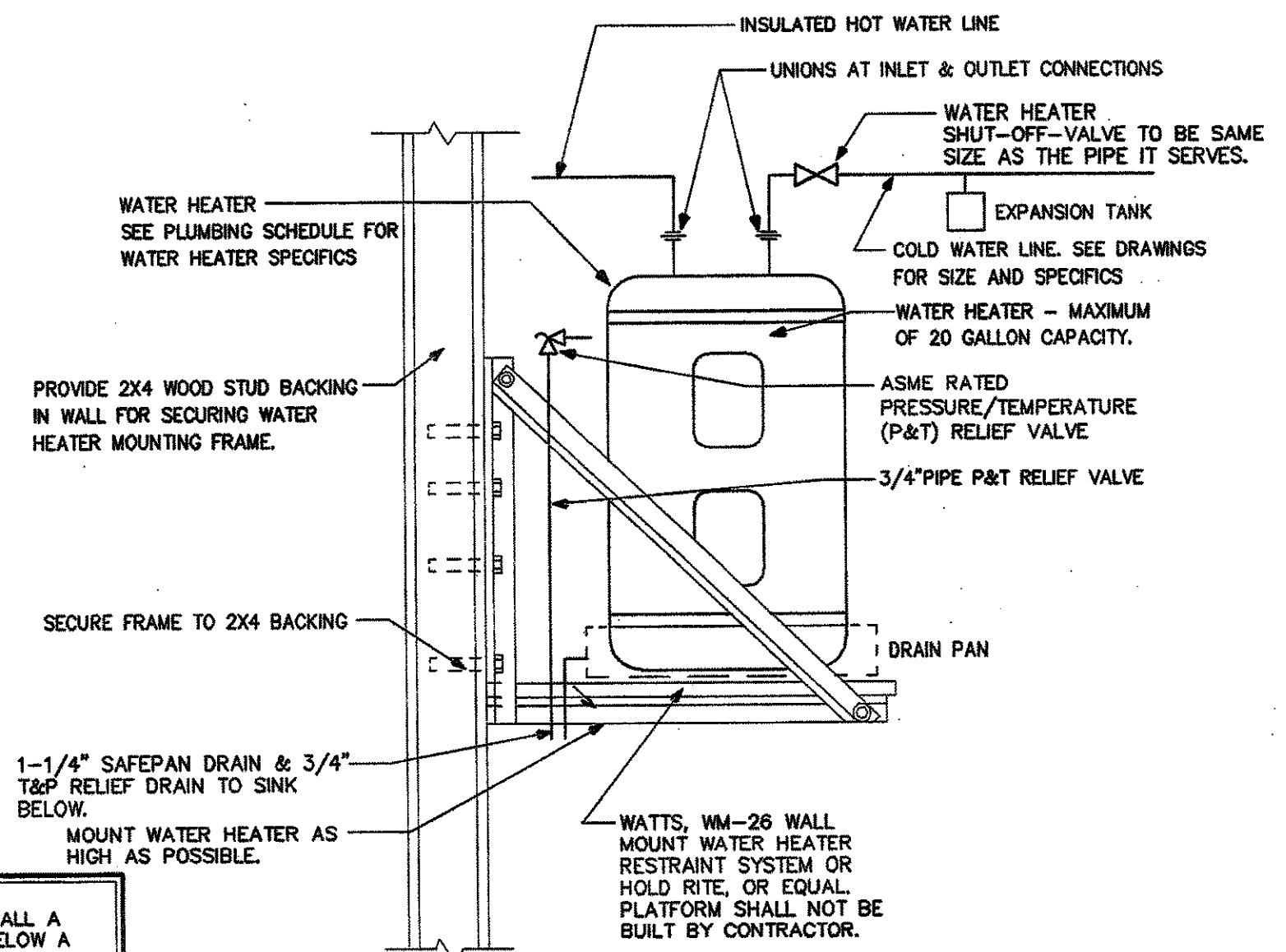


10 CONCESSIONS TRAP PRIMER DETAIL

P1 NOT TO SCALE

4 GENERAL PLUMBING NOTES

P1 NOT TO SCALE



11 WATER HEATER DETAIL

P1 NOT TO SCALE

MULT-PURPOSE BUILDING FOR
NORTHLAKE CHRISTIAN SCHOOL
 70104 WOLVERNE DRIVE
 COVINGTON, LOUISIANA 70433

ZITO RUSSELL
 ARCHITECTS, P.C.
 820 S. UNIVERSITY BLVD., SUITE 20
 MOBILE, AL 36609
 PHONE (251) 343-6161
 FAX (251) 343-5505

© COPYRIGHT 2010
 ZITO RUSSELL
 ARCHITECTS, P.C.

REVISIONS

STATE OF LOUISIANA
 JOEL B. DAVIS
 License No. 22574

FILE 3316
 DATE 07/16/10
 SHEET

P1