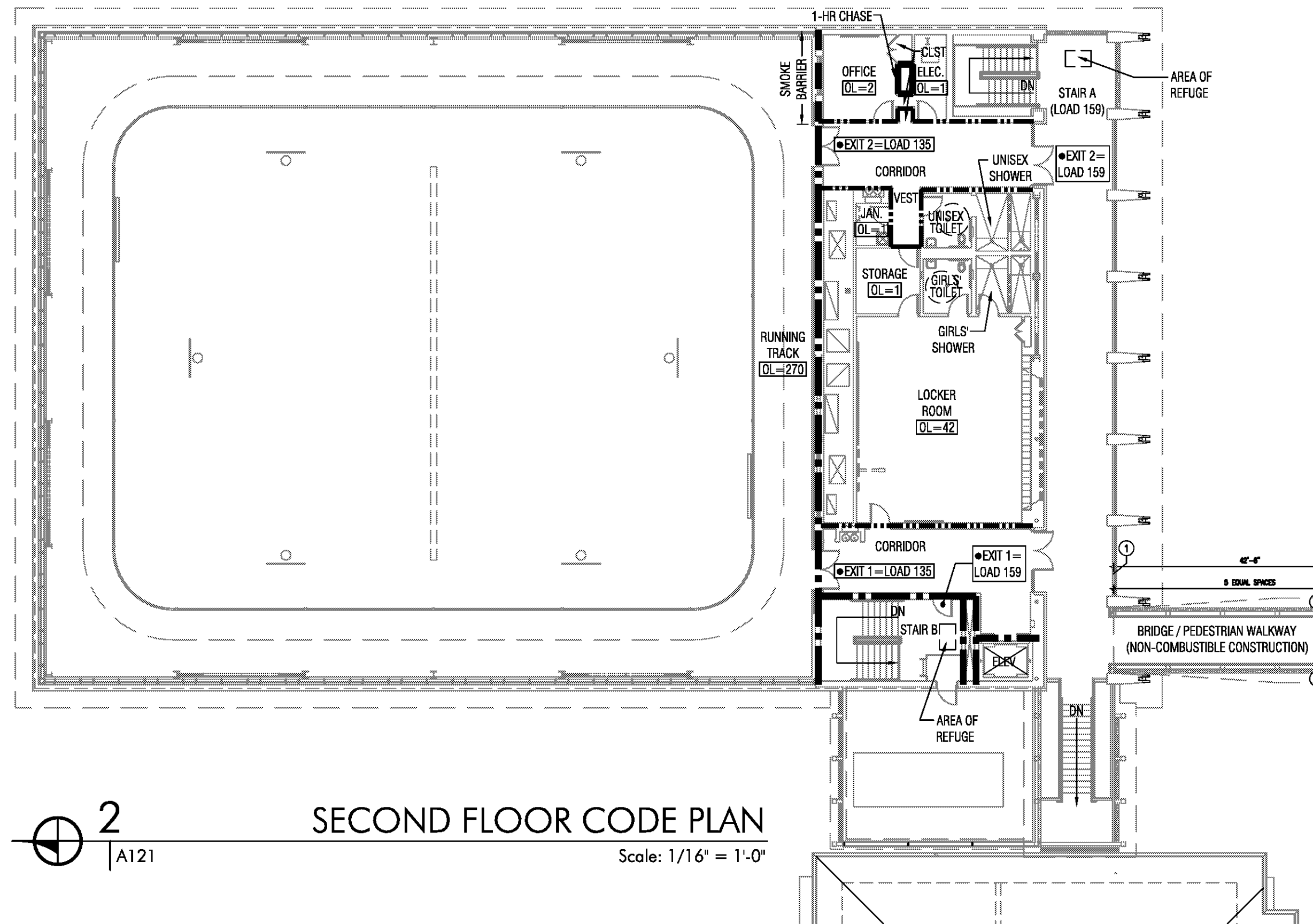
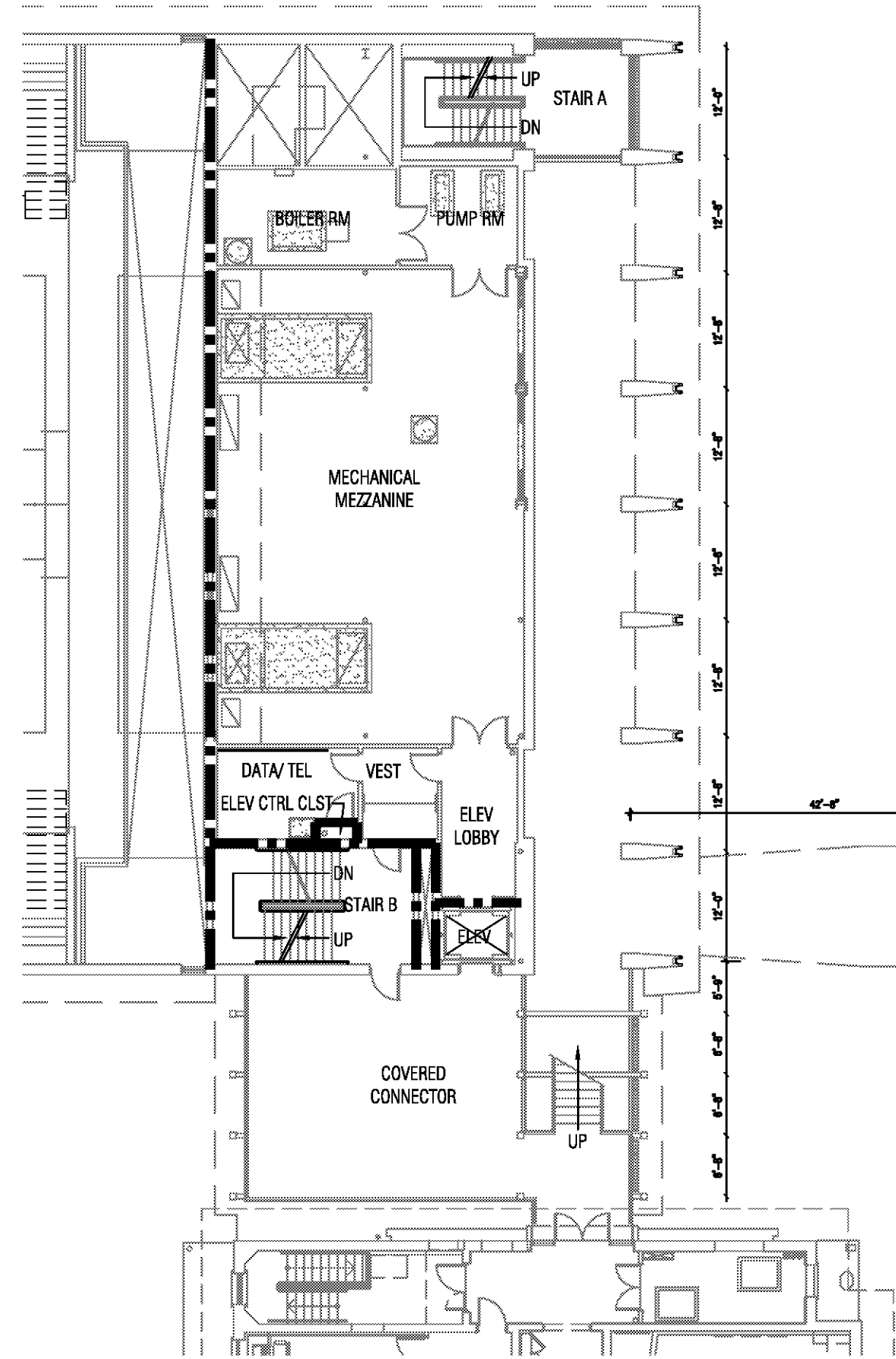


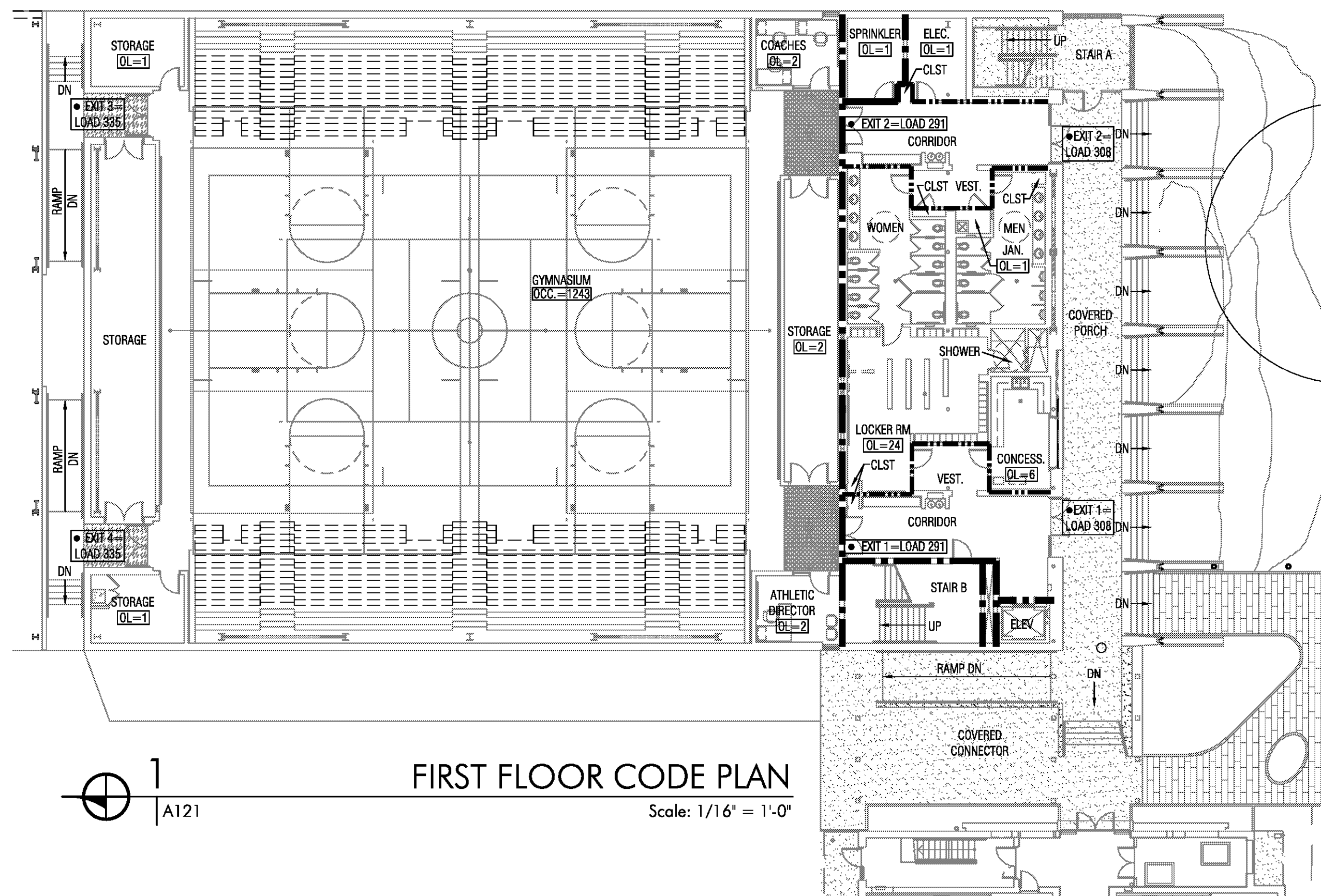
4 CODE BUILDING SECTION
Scale: 1/16" = 1'-0"



2 SECOND FLOOR CODE PLAN
Scale: 1/16" = 1'-0"



3 MEZZANINE FLOOR CODE PLAN
Scale: 1/16" = 1'-0"



1 FIRST FLOOR CODE PLAN
Scale: 1/16" = 1'-0"

BUILDING CODE SUMMARY NEW GYMNASIUM

PROJECT NAME AND ADDRESS:

ACADEMY OF THE SACRED HEART PHASE 2
4501 CARONDELET STREET
NEW ORLEANS, LA 70115

PROPOSED USE:

NEW GYMNASIUM FOR THE ACADEMY OF SACRED HEART

CODE ENFORCEMENT JURISDICTION:

- CITY OF NEW ORLEANS DEPT. OF SAFETY AND PERMITS
- OFFICE OF STATE FIRE MARSHAL

APPLICABLE CODES:

- 2008 INTERNATIONAL BUILDING CODE W/ CITY OF N.O. AMENDMENTS
- 2006 LIFE SAFETY CODE NFPA 101
- 2000 STANDARD PLUMBING CODE, WITH THE LOUISIANA AMENDMENTS
- 1994 AMERICANS WITH DISABILITIES ACT ACCESSIBILITY GUIDELINES (ADAAG)

BUILDING DATA:

- OCCUPANCY CLASSIFICATION: NON-SEPARATED MIXED OCCUPANCY, GROUPS A-3 AND E
- CONSTRUCTION TYPE: TYPE II-B, FULLY SPRINKLERED
- BUILDING HEIGHT: TWO STORES, LESS THAN 75 FEET
- BUILDING AREA FOOTPRINT: 18,100 SF

FIRE RESISTANCE REQUIREMENTS:

- TYPE II-B (1-HR) NON-COMBUSTIBLE CONSTRUCTION; NO FIRE RATING REQUIRED FOR STRUCTURAL FRAME, BEARING WALLS, FLOOR, AND ROOF CONSTRUCTION
- NO FIRE RATING REQUIRED FOR EXTERIOR WALLS BASED ON OCCUPANCY, CONSTRUCTION TYPE, AND A FIRE SEPARATION DISTANCE GREATER OR EQUAL TO 10 FEET
- NO LIMIT TO THE SIZE OF UNPROTECTED EXTERIOR WALL OPENINGS BASED ON CONSTRUCTION TYPE AND A FIRE SEPARATION DISTANCE GREATER THAN 5 FEET
- GYM AND TRACK (2-STORY COMMUNICATING SPACE) IS REQUIRED TO BE SEPARATED FROM THE REST OF THE BUILDING BY A SMOKE BARRIER OR 1-HOUR FIRE BARRIER
- CORRIDORS ARE REQUIRED TO BE SMOKE PARTITIONS; NO FIRE RATING REQUIRED

MEANS OF EGRESS:

- MAXIMUM TRAVEL DISTANCE TO EXIT - ASSEMBLY = 250 FEET EDUCATION = 200 FEET
- MAXIMUM COMMON PATH OF TRAVEL - ASSEMBLY = 50 PERSONS = 20 FEET ASSEMBLY = 50 PERSONS = 75 FEET EDUCATION = 100 FEET
- DEAD END CORRIDOR LIMIT = 20 FEET
- REMOVEDNESS OF MULTIPLE EXITS = ONE THIRD OF THE DIAGONAL DISTANCE OF THE SPACE

EGRESS CAPACITY:

NFPA (TABLE 7.3.3.1)

	SF	OL FACTOR (SF/PERSON)	OL	NO. OF EXITS
FIRST FLOOR GYMNASIUM				
GYMNASIUM (BLEACHER SEATS)	-	816	816	
GYMNASIUM (WHEELCHAIR SPACES)	-	12	12	
GYMNASIUM (OPEN COURT)	6,215	15	415	
EDUCATIONAL BUSINESS	470	20	24	
BUSINESS	-	100	4	
STORAGE, EQUIP., JANITOR	-	300	7	
MERCANTILE (CONCESSIONS)	-	30	6	
			1,284	4
SECOND FLOOR GYMNASIUM				
GYMNASIUM RUNNING TRACK	4,038	15	270	
EDUCATIONAL BUSINESS	838	20	42	
BUSINESS	161	100	2	
STORAGE, EQUIP., JANITOR	-	300	3	
			317	2

NFPA (7.4.12)

OCCUPANT LOAD MORE THAN 500 BUT LESS THAN 1,000

OCCUPANT LOAD MORE THAN 1,000

MIN. NO. OF EXITS
3
4

NFPA (12.2.3.8)

CORRIDOR

STAR/RAMP

MIN. EXIT ACCESS WIDTH
72 IN.
44 IN.

LEGEND

- 1-HOUR FIRE BARRIER
- SMOKE BARRIER
- SMOKE PARTITION