



BUILDING CODE SUMMARY EXISTING BUILDING

PROJECT NAME AND ADDRESS:
 ACADEMY OF THE SACRED HEART PHASE 2
 4501 CARONDELET STREET
 NEW ORLEANS, LA 70115

PROPOSED USE:
 RENOVATED ARTS AND ATHLETICS FACILITY FOR THE
 ACADEMY OF SACRED HEART

CODE ENFORCEMENT JURISDICTION:

- CITY OF NEW ORLEANS DEPT. OF SAFETY AND PERMITS
- OFFICE OF STATE FIRE MARSHAL

APPLICABLE CODES:

- 2006 INTERNATIONAL BUILDING CODE W/ CITY OF N.O. AMENDMENTS
- 2006 LIFE SAFETY CODE NFPA 101
- 2000 STANDARD PLUMBING CODE, W/ THE LOUISIANA AMENDMENTS
- 1994 AMERICANS WITH DISABILITIES ACT ACCESSIBILITY GUIDELINES (ADAAG)

BUILDING DATA:

- OCCUPANCY CLASSIFICATION: GROUP E
- CONSTRUCTION TYPE: TYPE II-B, FULLY SPRINKLERED
- BUILDING HEIGHT: TWO STORES, LESS THAN 75 FEET
- BUILDING AREA FOOTPRINT: 8,000 SF

FIRE RESISTANCE REQUIREMENTS:

- TYPE II-B: NO FIRE RATING REQUIRED FOR BUILDING ELEMENTS EXCEPT FOR LOAD-BEARING EXTERIOR WALLS (2 HRS REQUIRED)
- BASED ON CONSTRUCTION TYPE AND FIRE SEPARATION DISTANCE, EAST BUILDING WALL MAY HAVE UP TO 45% UNPROTECTED OPENINGS AND OTHER WALLS MAY HAVE UNLIMITED UNPROTECTED OPENINGS
- CORRIDORS ARE REQUIRED TO BE SMOKE PARTITIONS; NO FIRE RATING REQUIRED

MEANS OF EGRESS:

- MAXIMUM TRAVEL DISTANCE TO EXIT
 EDUCATION = 200 FEET
 BUSINESS = 300 FEET
- MAXIMUM COMMON PATH OF TRAVEL
 EDUCATION = 100 FEET
 BUSINESS = 100 FEET
- DEAD END CORRIDOR LIMIT = 20 FEET
- REMOVEDNESS OF MULTIPLE EXITS = ONE THIRD OF THE DIAGONAL DISTANCE OF THE SPACE

EGRESS CAPACITY:
 NFPA (TABLE 7.3.3.1)

| | SF | OL FACTOR (SF/PERSON) | OL | NO. OF EXITS |
|----------------------------------|-------|-----------------------|-----|--------------|
| FIRST FLOOR ST. JOSEPH'S | | | | |
| EDUCATION (VOCATIONAL ROOMS) | 4,200 | 50 | 84 | 2 |
| ASSEMBLY (UNCONCENTRATED) | 690 | 15 | 46 | |
| STORAGE, EQUIP., JANITOR | - | 300 | 6 | |
| | | | 136 | |
| SECOND FLOOR ST. JOSEPH'S | | | | |
| EDUCATION (VOCATIONAL ROOMS) | 4,500 | 50 | 90 | 2 |
| STORAGE, EQUIP., JANITOR | - | 300 | 8 | |
| | | | 98 | |

NFPA (7.4.1.2) MIN. NO. OF EXITS

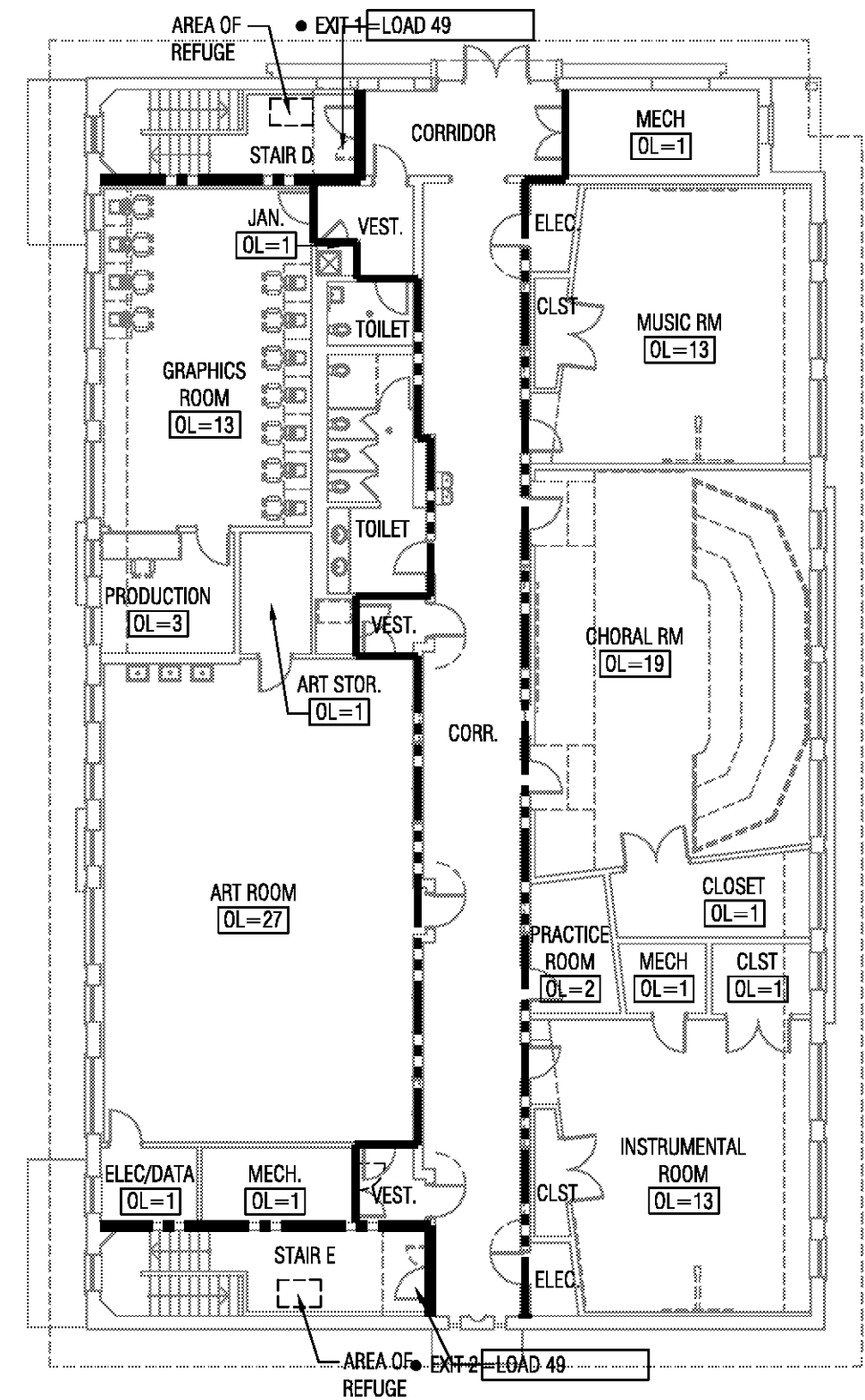
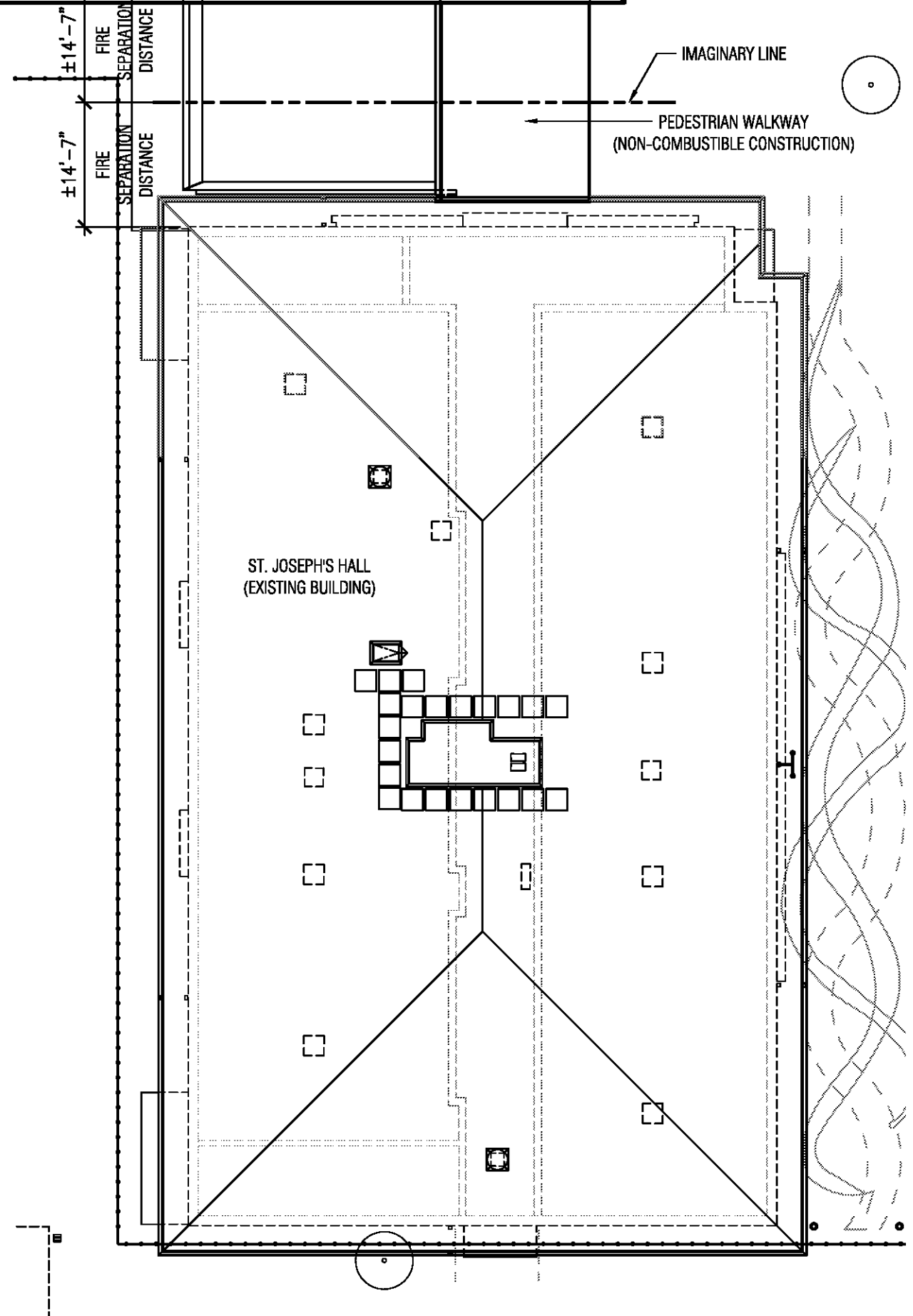
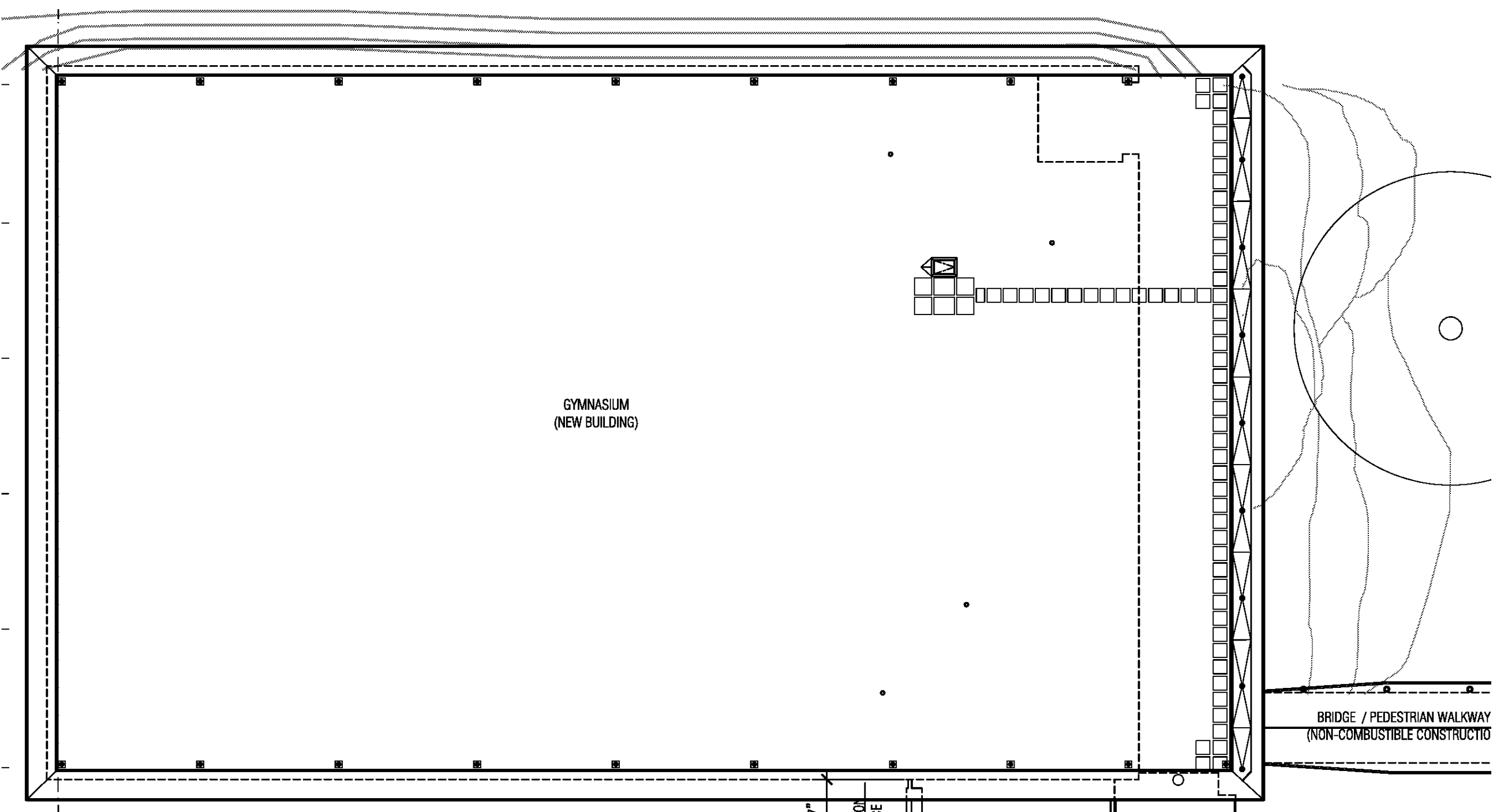
| | |
|-----------------------------|---|
| OCCUPANT LOAD LESS THAN 500 | 2 |
|-----------------------------|---|

NFPA (12.2.3.8) MIN. EXIT ACCESS WIDTH

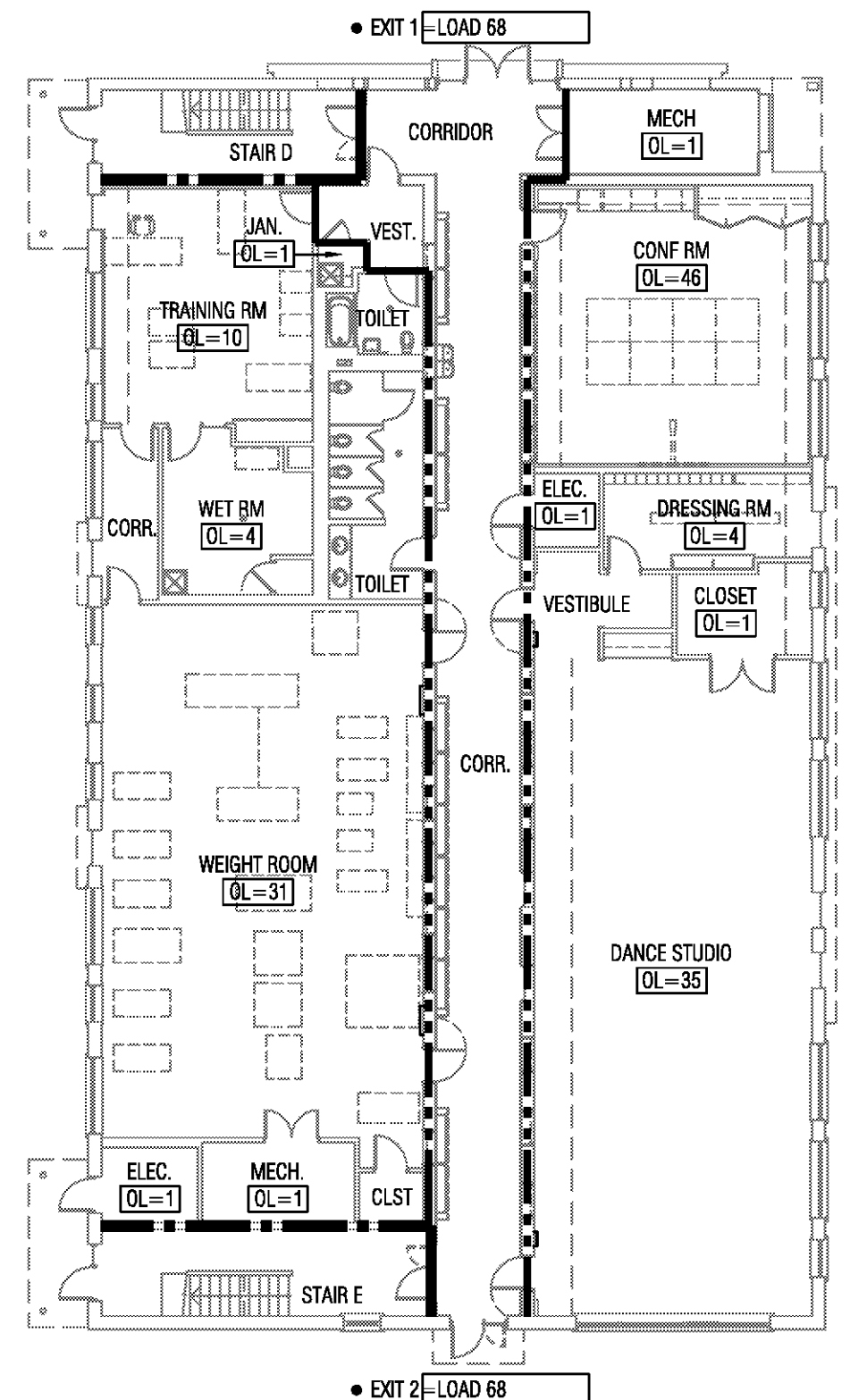
| | |
|------------|--------|
| CORRIDOR | 72 IN. |
| STAIR/RAMP | 44 IN. |

LEGEND

- 1-HOUR FIRE BARRIER
- SMOKE PARTITION



3 SECOND FLOOR CODE PLAN
 Scale: 1/16" = 1'-0"



2 FIRST FLOOR CODE PLAN
 Scale: 1/16" = 1'-0"

1 SITE CODE PLAN
 Scale: 1/16" = 1'-0"