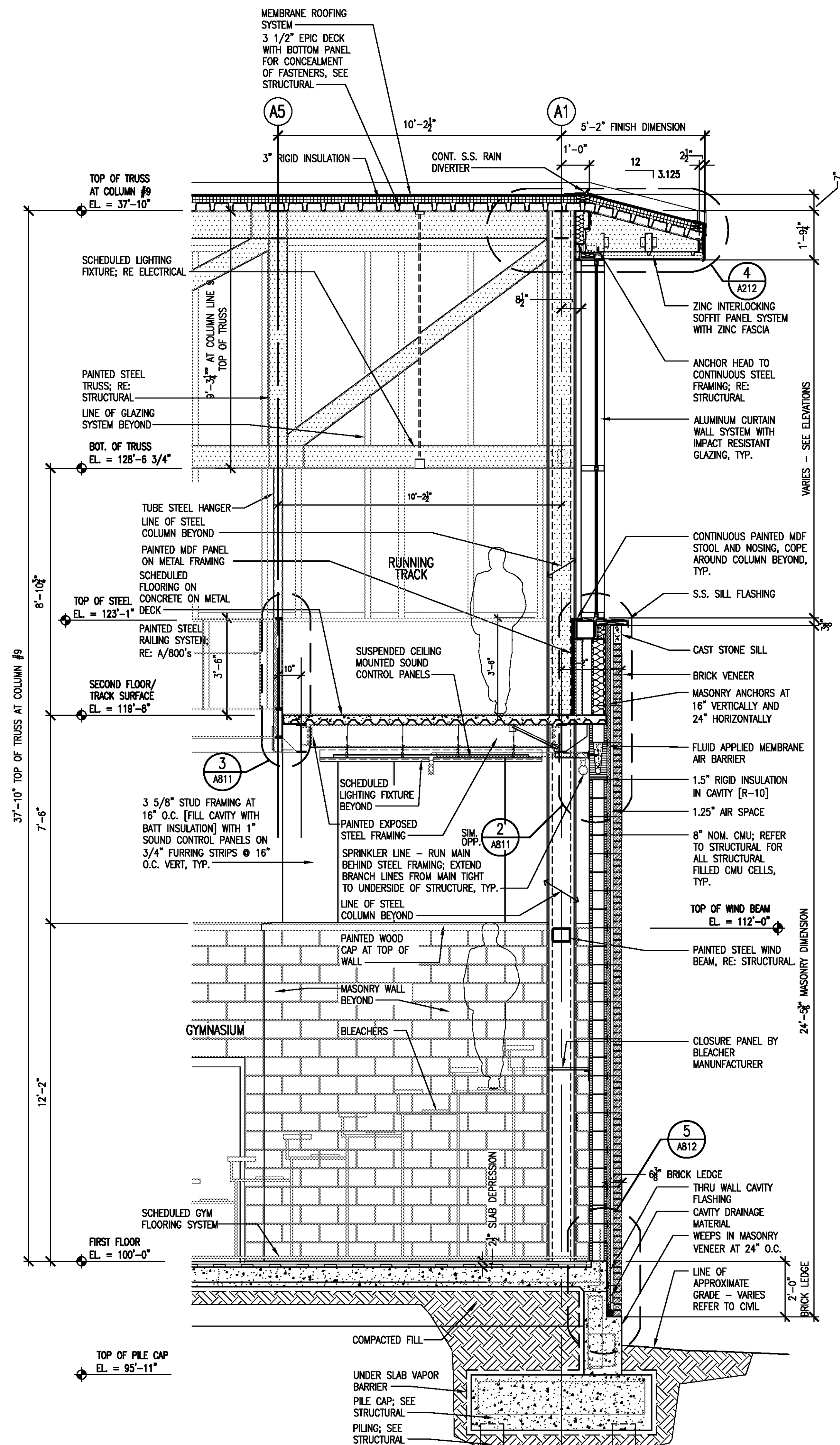
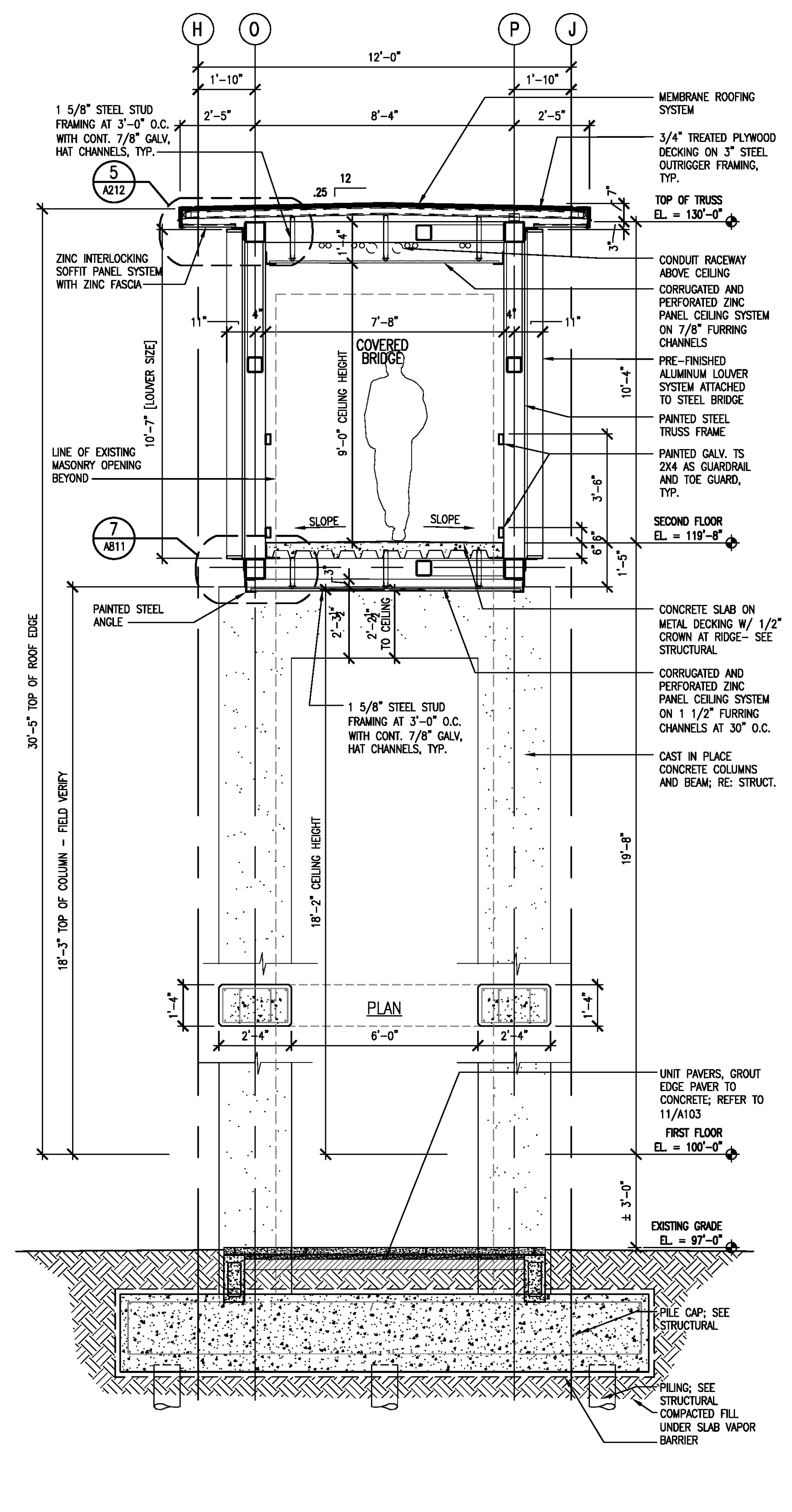


1 WALL SECTION @ COL. #5
 A201 | A322 3/8" = 1' - 0"



2 WALL SECTION @ COL. #9
 A201 | A322 3/8" = 1' - 0"



3 SECTION @ BRIDGE
 A201 | A322 3/8" = 1' - 0"

SHEET TITLE: WALL SECTIONS

DATE:	JAN 08, 2010
DRAWN BY:	ART
REVISION:	

