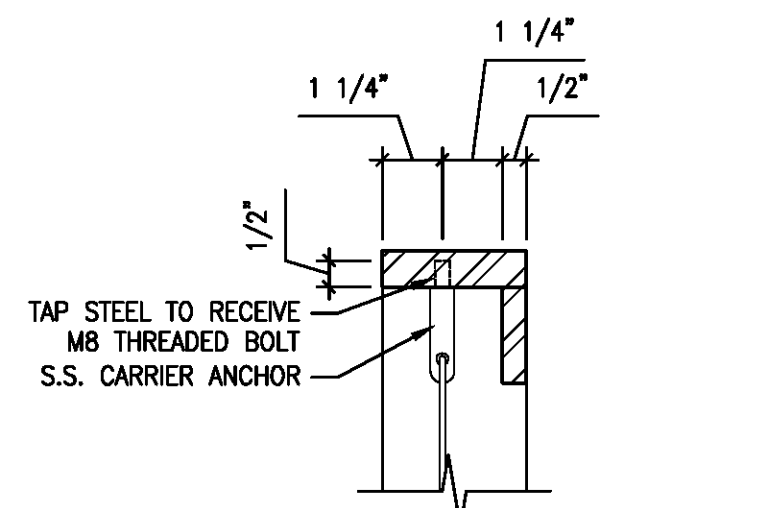
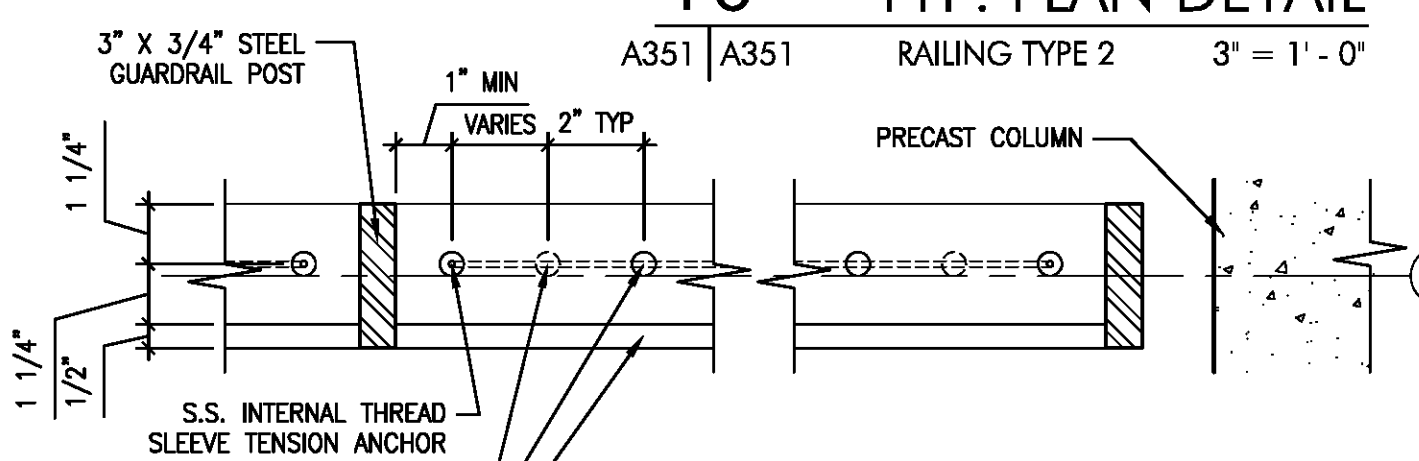


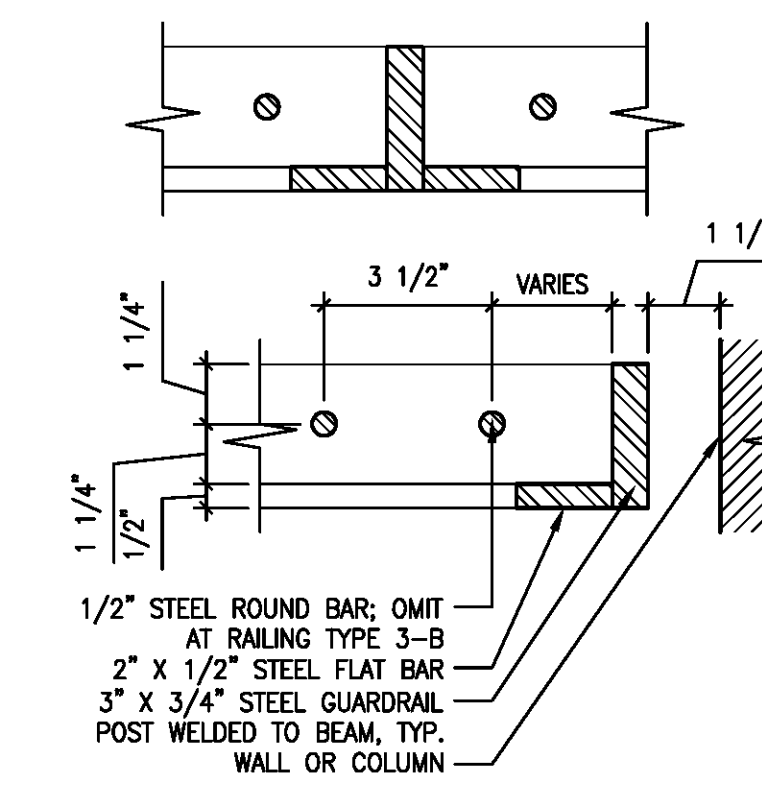
10 TYP. PLAN DETAIL  
A351 | A351 RAILING TYPE 2 3' = 1'-0"



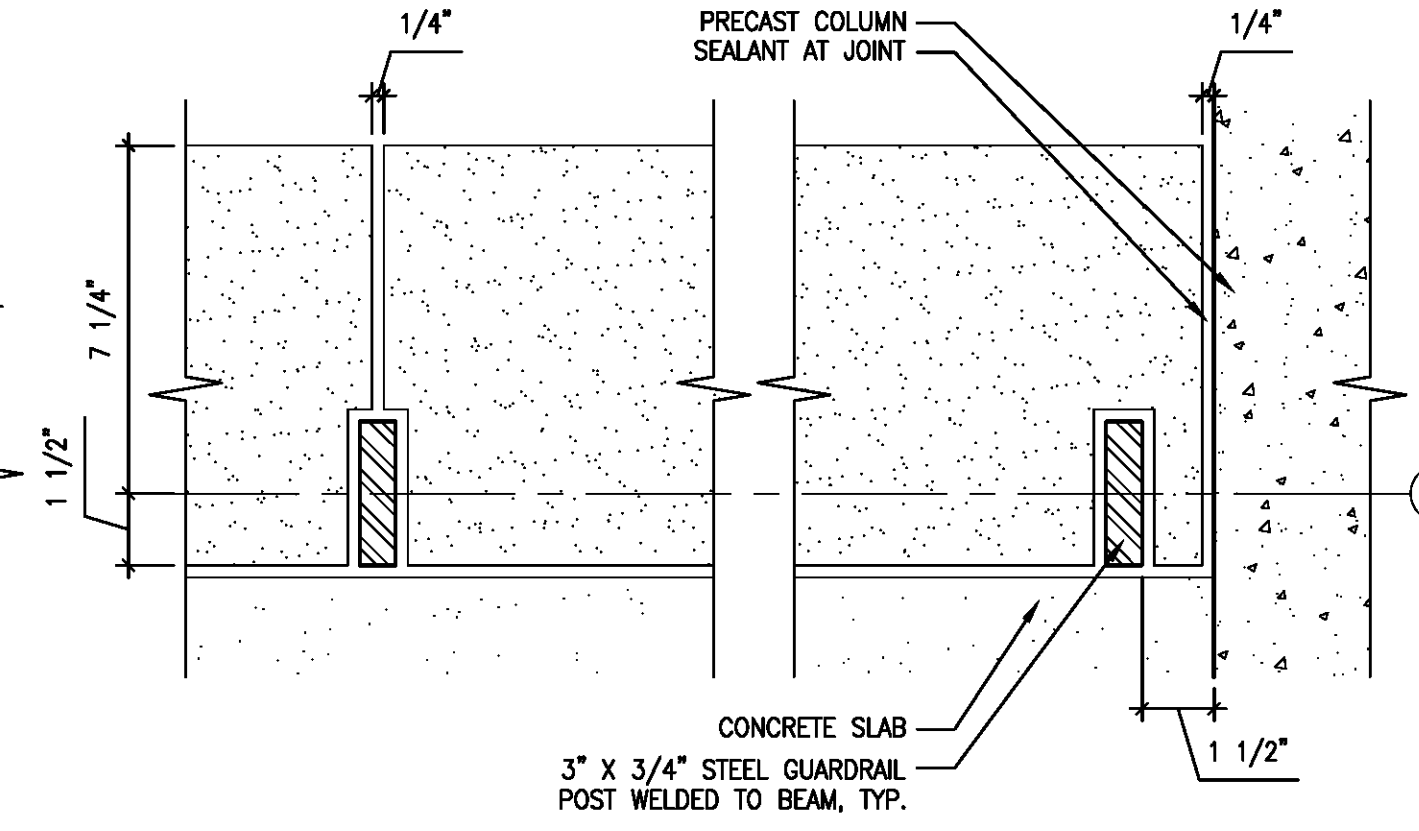
9 TYP. SECTION  
A351 | A351 RAILING TYPE 1 3' = 1'-0"



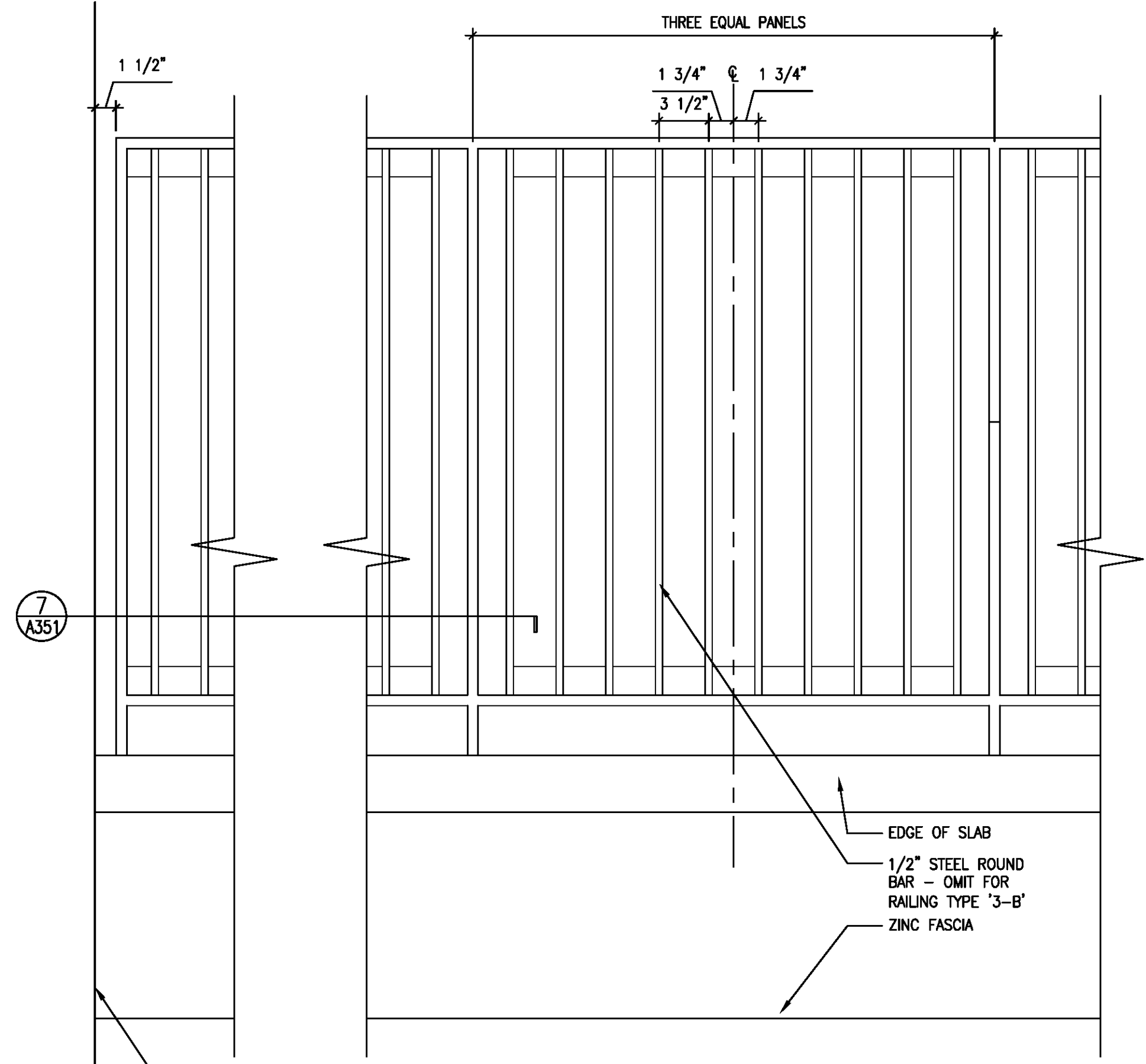
8 TYP. PLAN DETAIL  
A351 | A351 RAILING TYPE 1 3' = 1'-0"



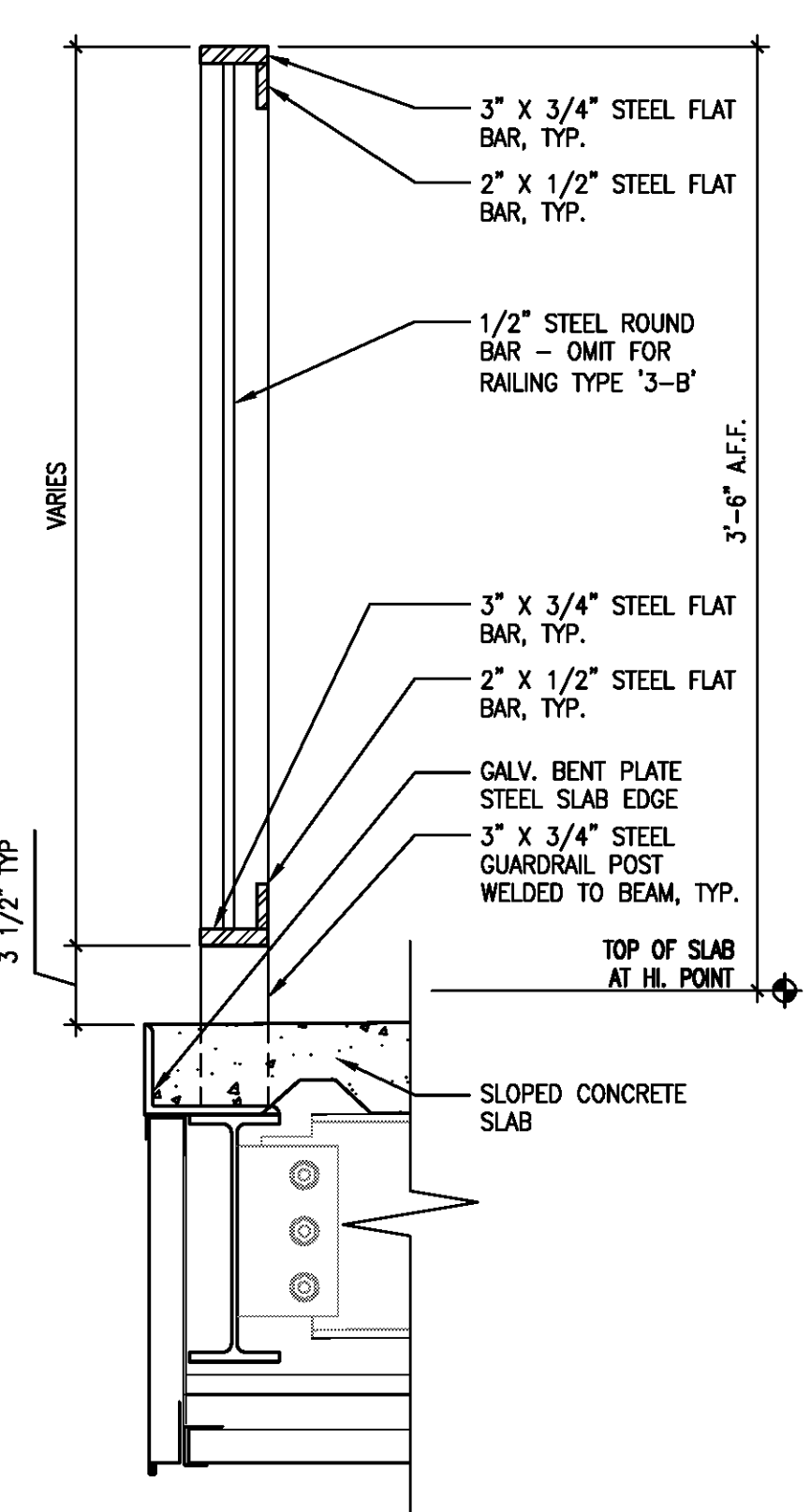
7 TYP. PLAN DETAIL  
A351 | A351 RAILING TYPE 3 A/B 3' = 1'-0"



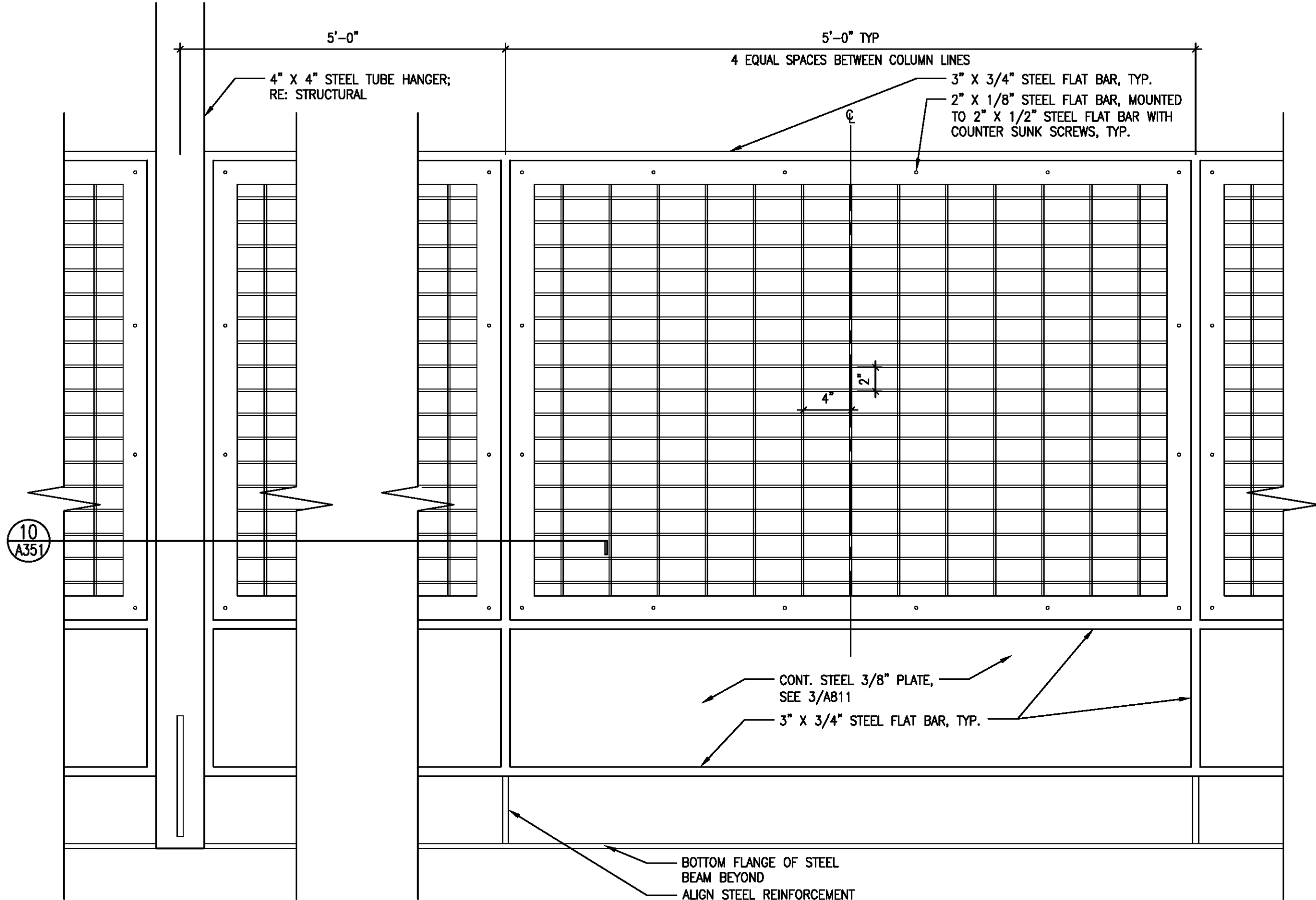
6 TYP. PLAN DETAIL  
A351 | A351 RAILING TYPE 1 3' = 1'-0"



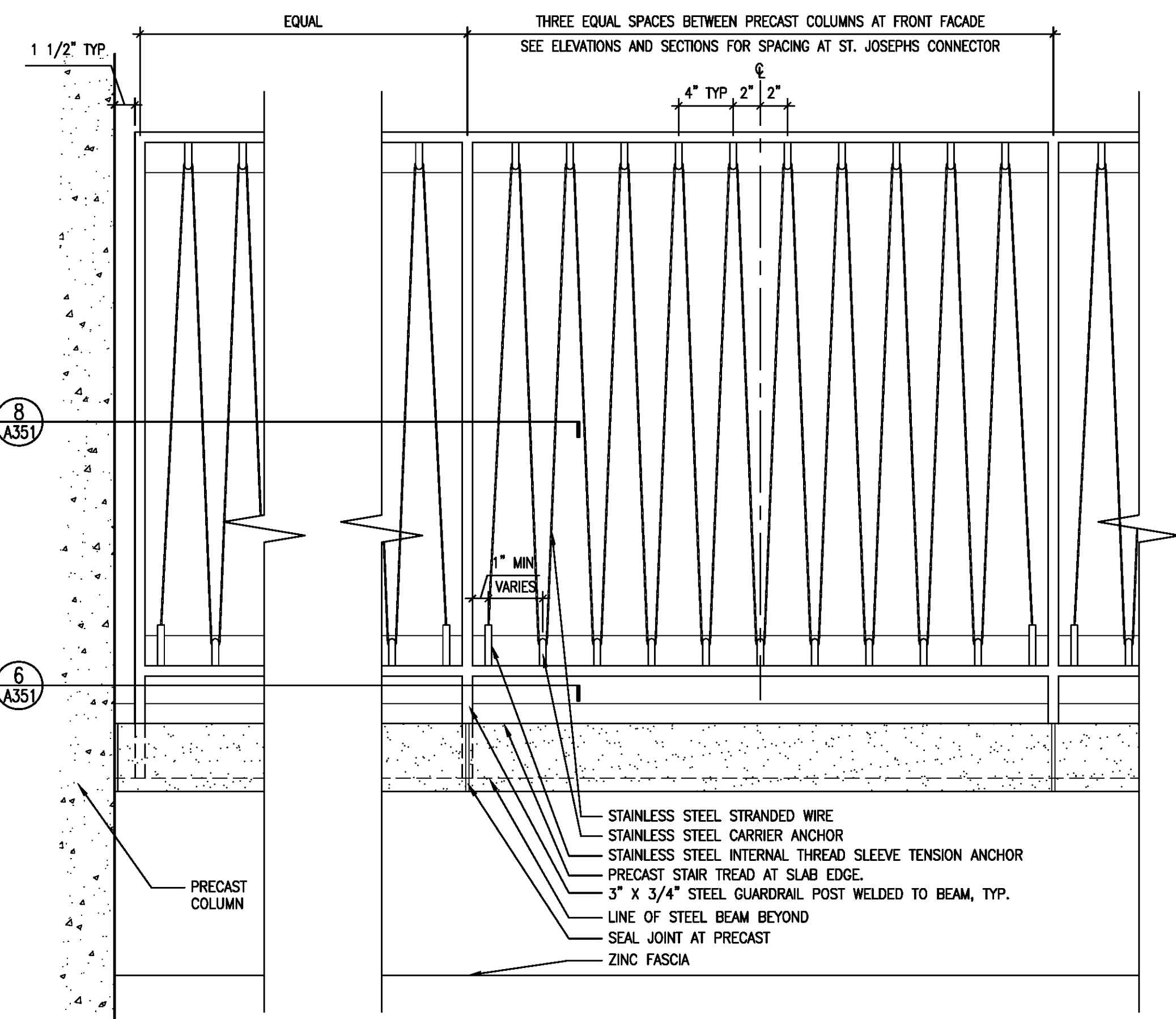
4 TYPICAL ELEVATION  
A301 | A351 RAILING TYPE 1 1 1/2' = 1'-0"



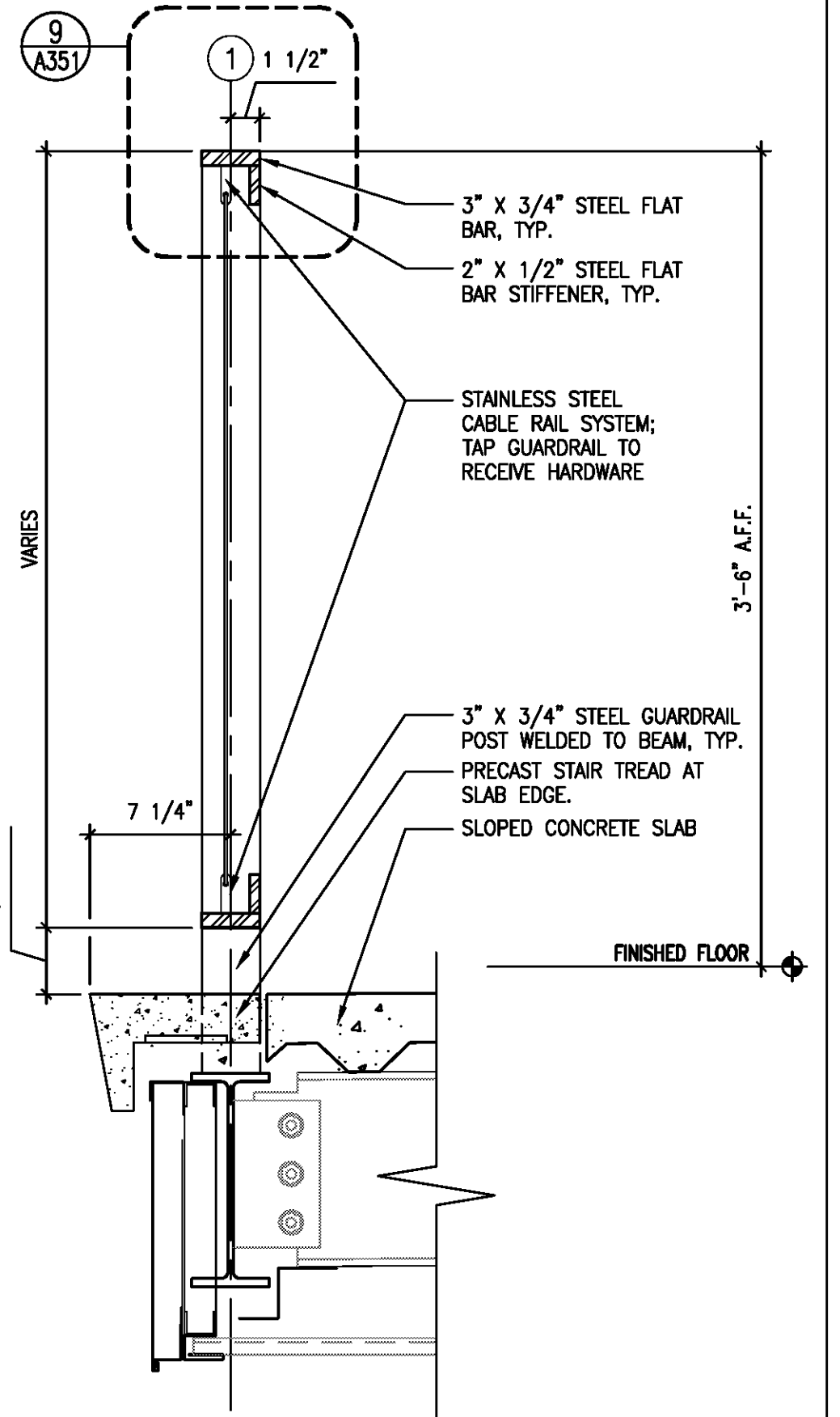
3 TYP. SECTION  
A301 | A351 RAILING TYPE 3-A 1 1/2' = 1'-0"



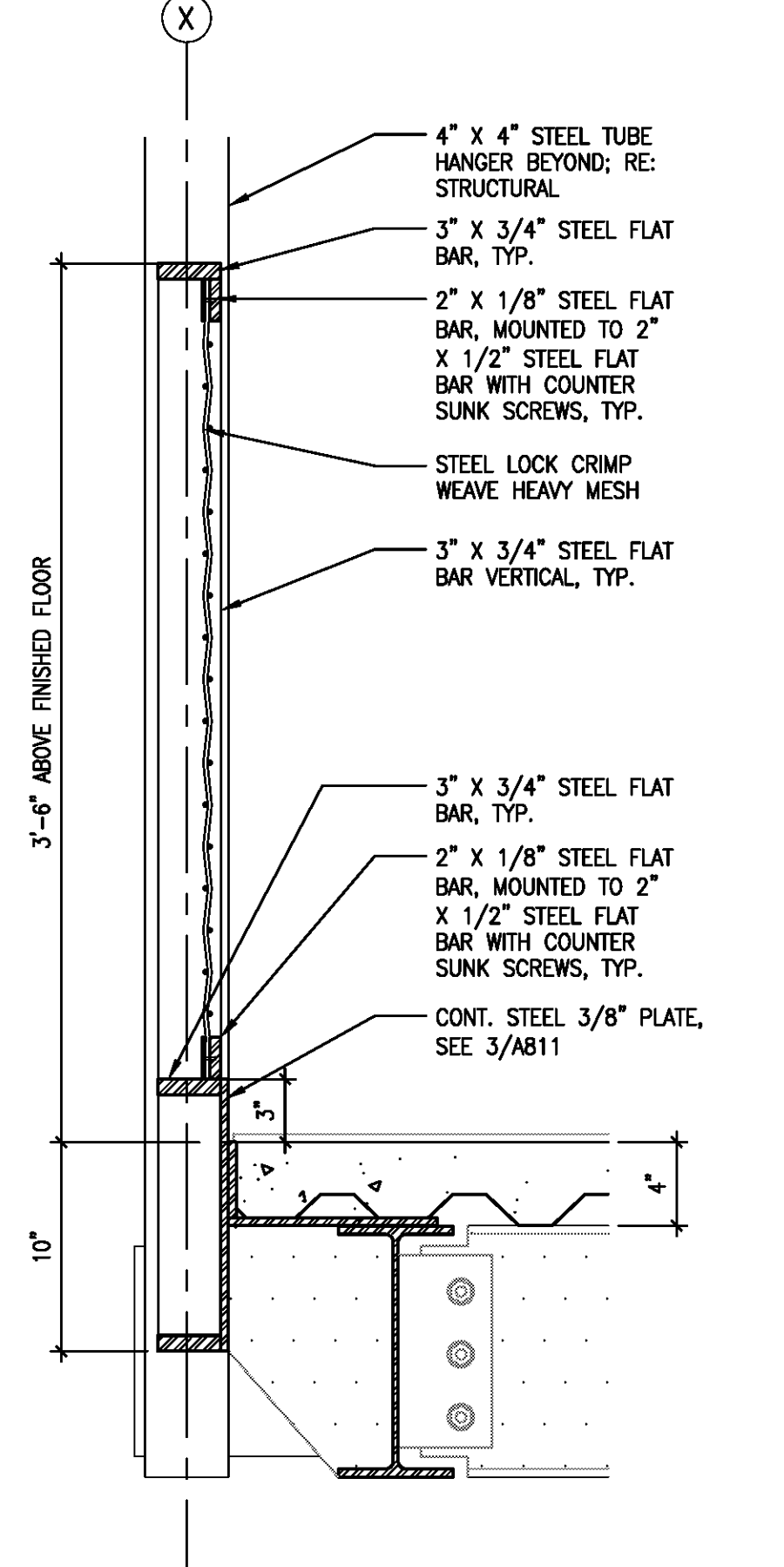
5 TYPICAL ELEVATION  
A301 | A351 RAILING TYPE 2 1 1/2' = 1'-0"



2 TYPICAL ELEVATION  
A301 | A351 RAILING TYPE 1 1 1/2' = 1'-0"



1 TYP. SECTION  
A301 | A351 RAILING TYPE 1 1 1/2' = 1'-0"



4 TYP. DETAIL  
A301 | A351 RAILING TYPE 2 1 1/2' = 1'-0"  
NOTE: RADIUS RAILING AT TRACK CORNERS

GENERAL NOTE:  
WELD ALL STEEL CONNECTIONS WITH FULL PENETRATION FILLET WELD AND GRIND SMOOTH

Waggoner & Ball Architects  
2200 PRYTHANIA STREET  
NEW ORLEANS, LOUISIANA 70130  
T 504-524-5808 F 504-524-5814  
wballarchitects.com

ACADEMY OF THE SACRED HEART PHASE 2  
New Arts and Athletics Facility  
4501 CARONDELET ST.  
NEW ORLEANS, LOUISIANA 70115  
PROJECT NO.: 0209-20

SHEET TITLE:  
RAILING DETAILS  
DATE: JAN 08, 2010  
DRAWN BY: JRD  
REVISION:



A351